

# OPERATIONS

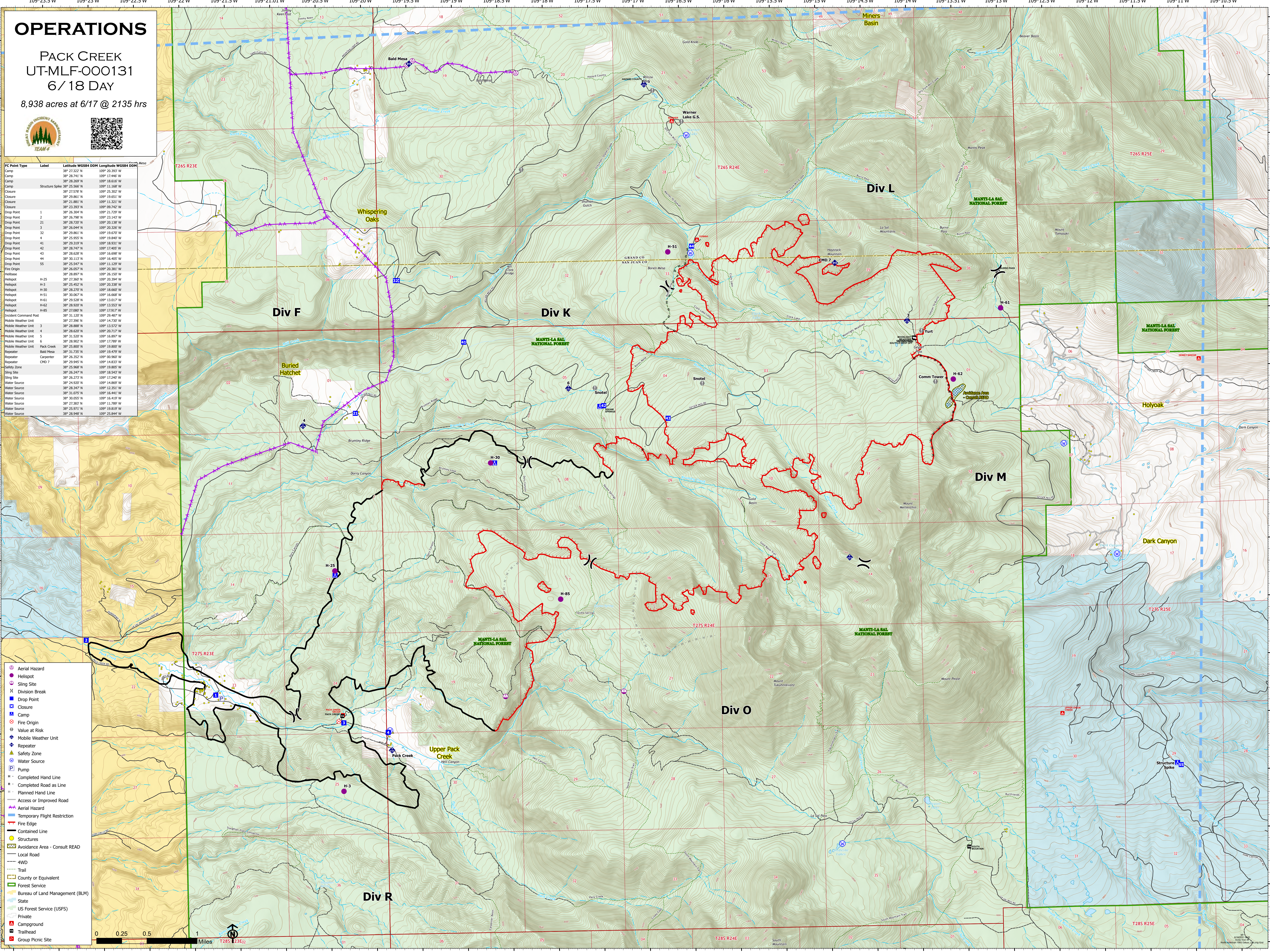
PACK CREEK  
UT-MLF-000131  
6/18 DAY

8,938 acres at 6/17 @ 2135 hrs



FC Point Type	Label	Latitude WGS84 DDM	Longitude WGS84 DDM
Camp		38° 28.741' N	109° 17.446' W
Camp		38° 28.269' N	109° 18.616' W
Camp	Structure Spike	38° 25.566' N	109° 11.166' W
Closure		38° 27.576' N	109° 23.302' W
Closure		38° 29.861' N	109° 19.651' W
Closure		38° 21.801' N	109° 11.321' W
Closure		38° 23.392' N	109° 06.745' W
Drop Point	1	38° 26.304' N	109° 21.729' W
Drop Point	2	38° 26.798' N	109° 23.143' W
Drop Point	21	38° 26.730' N	109° 26.138' W
Drop Point	3	38° 26.044' N	109° 20.326' W
Drop Point	32	38° 29.861' N	109° 19.670' W
Drop Point	4	38° 25.955' N	109° 19.840' W
Drop Point	41	38° 29.318' N	109° 16.405' W
Drop Point	42	38° 28.747' N	109° 17.405' W
Drop Point	43	38° 28.628' N	109° 16.698' W
Drop Point	44	38° 29.117' N	109° 16.405' W
Drop Point	55	38° 25.547' N	109° 11.129' W
Fire Origin		38° 26.057' N	109° 20.381' W
Helispot	H-25	38° 22.027' N	109° 20.955' W
Helispot	H-3	38° 25.452' N	109° 20.338' W
Helispot	H-30	38° 28.270' N	109° 18.660' W
Helispot	H-51	38° 29.907' N	109° 14.669' W
Helispot	H-61	38° 29.528' N	109° 13.017' W
Helispot	H-62	38° 28.920' N	109° 13.553' W
Helispot	H-85	38° 27.980' N	109° 17.917' W
Incident Command Post		38° 31.107' N	109° 20.487' W
Mobile Weather Unit		38° 27.396' N	109° 14.730' W
Mobile Weather Unit	3	38° 28.888' N	109° 13.572' W
Mobile Weather Unit	4	38° 28.037' N	109° 20.717' W
Mobile Weather Unit	5	38° 31.520' N	109° 16.897' W
Mobile Weather Unit	6	38° 28.902' N	109° 17.789' W
Mobile Weather Unit	Pack Creek	38° 25.900' N	109° 19.800' W
Repeater	Bald Mesa	38° 31.735' N	109° 19.470' W
Repeater	Carpenter	38° 26.352' N	109° 00.960' W
Repeater	CHD 7	38° 29.945' N	109° 14.833' W
Safety Zone		38° 25.968' N	109° 15.800' W
Sling Site		38° 26.247' N	109° 18.543' W
Sling Site		38° 26.273' N	109° 17.240' W
Water Source		38° 24.920' N	109° 14.669' W
Water Source		38° 28.347' N	109° 13.351' W
Water Source		38° 31.075' N	109° 16.441' W
Water Source		38° 30.055' N	109° 16.419' W
Water Source		38° 27.987' N	109° 11.789' W
Water Source		38° 25.971' N	109° 19.819' W
Water Source		38° 28.948' N	109° 25.844' W

- Aerial Hazard
- Helispot
- Sling Site
- Division Break
- Drop Point
- Closure
- Camp
- Fire Origin
- Value at Risk
- Mobile Weather Unit
- Repeater
- Safety Zone
- Water Source
- Pump
- Completed Hand Line
- Completed Road as Line
- Planned Hand Line
- Access or Improved Road
- Aerial Hazard
- Temporary Flight Restriction
- Fire Edge
- Contained Line
- Structures
- Avoidance Area - Consult READ
- Local Road
- 4WD
- Trail
- County or Equivalent
- Forest Service
- Bureau of Land Management (BLM)
- State
- US Forest Service (USFS)
- Private
- Campground
- Trailhead
- Group Picnic Site



38°32'N  
38°31'40"N  
38°31'N  
38°30'50"N  
38°30'N  
38°29'50"N  
38°29'N  
38°28'50"N  
38°28'N  
38°27'50"N  
38°27'N  
38°26'50"N  
38°26'N  
38°25'50"N  
38°25'N  
38°24'50"N  
38°24'N  
38°23'50"N  
38°23'N  
38°22'50"N  
38°22'N  
38°21'50"N  
38°21'N  
38°20'50"N  
38°20'N  
38°19'50"N  
38°19'N  
38°18'50"N  
38°18'N  
38°17'50"N  
38°17'N  
38°16'50"N  
38°16'N  
38°15'50"N  
38°15'N  
38°14'50"N  
38°14'N  
38°13'50"N  
38°13'N  
38°12'50"N  
38°12'N  
38°11'50"N  
38°11'N  
38°10'50"N  
38°10'N

109°23.5'W  
109°23'W  
109°22.5'W  
109°22'W  
109°21.5'W  
109°21'W  
109°20.5'W  
109°20'W  
109°19.5'W  
109°19'W  
109°18.5'W  
109°18'W  
109°17.5'W  
109°17'W  
109°16.5'W  
109°16'W  
109°15.5'W  
109°15'W  
109°14.5'W  
109°14'W  
109°13.5'W  
109°13'W  
109°12.5'W  
109°12'W  
109°11.5'W  
109°11'W  
109°10.5'W