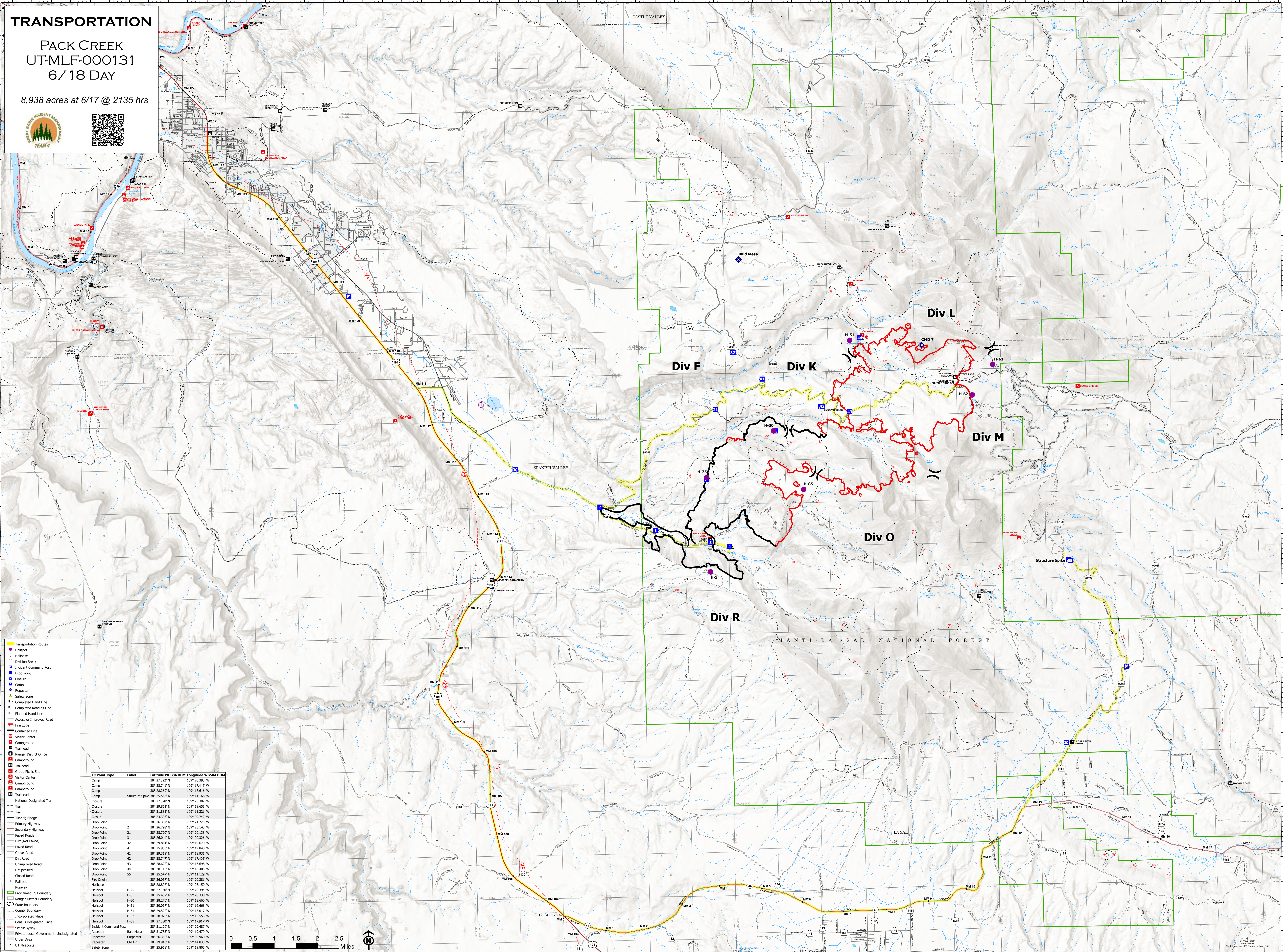


TRANSPORTATION

PACK CREEK
UT-MLF-000131
6/18 DAY

8,938 acres at 6/17 @ 2135 hrs



- Transportation Routes
- Helipoint
- Helibase
- Division Break
- Incident Command Post
- Drop Point
- Closure
- Camp
- Repeater
- Safety Zone
- Completed Hand Line
- Planned Hand Line
- Access or Improved Road
- Fire Edge
- Contained Line
- Visitor Center
- Campground
- Trailhead
- Ranger District Office
- Campground
- Trailhead
- Group Picnic Site
- Visitor Center
- Camp
- Campground
- Trailhead
- National Designated Trail
- Trail
- Tunnel; Bridge
- Primary Highway
- Secondary Highway
- Paved Road
- Dirt (Not Paved)
- Paved Road
- Gravel Road
- Dirt Road
- Unimproved Road
- Unspecified
- Closed Road
- Fire Clean
- Railroad
- Runway
- Proclaimed FS Boundary
- Ranger District Boundary
- State Boundary
- County Boundary
- Incorporated Place
- Unincorporated Place
- Scenic Byway
- Private; Local Government; Undesignated
- Urban Area
- UT Helipoints

FC Point Type	Label	Latitude WGS84 DDM	Longitude WGS84 DDM
Camp		38° 27.322' N	109° 20.393' W
Camp		38° 28.741' N	109° 17.446' W
Camp		38° 28.597' N	109° 18.616' W
Camp	Structure Spike	38° 25.566' N	109° 11.168' W
Closure		38° 27.578' N	109° 25.302' W
Closure		38° 29.861' N	109° 19.651' W
Closure		38° 21.881' N	109° 11.321' W
Closure		38° 23.393' N	109° 09.742' W
Drop Point	1	38° 26.304' N	109° 21.729' W
Drop Point	2	38° 28.208' N	109° 23.143' W
Drop Point	21	38° 28.720' N	109° 20.138' W
Drop Point	3	38° 26.044' N	109° 20.326' W
Drop Point	32	38° 29.861' N	109° 19.670' W
Drop Point	4	38° 25.955' N	109° 19.840' W
Drop Point	41	38° 29.319' N	109° 18.931' W
Drop Point	42	38° 28.747' N	109° 17.405' W
Drop Point	43	38° 28.208' N	109° 16.696' W
Drop Point	44	38° 30.113' N	109° 16.405' W
Drop Point	55	38° 25.547' N	109° 11.129' W
Helibase	H-25	38° 28.527' N	109° 20.394' W
Helibase	H-30	38° 25.452' N	109° 20.338' W
Helibase	H-30	38° 28.210' N	109° 18.660' W
Helibase	H-51	38° 30.067' N	109° 16.668' W
Helibase	H-61	38° 29.528' N	109° 13.017' W
Helibase	H-62	38° 28.502' N	109° 13.553' W
Helibase	H-85	38° 27.680' N	109° 17.917' W
Incident Command Post		38° 31.120' N	109° 29.487' W
Repeater	Bald Mesa	38° 31.753' N	109° 15.479' W
Repeater	Capitator	38° 26.532' N	109° 09.967' W
Repeater	CHD 7	38° 29.945' N	109° 14.833' W
Safety Zone		38° 25.968' N	109° 19.805' W

