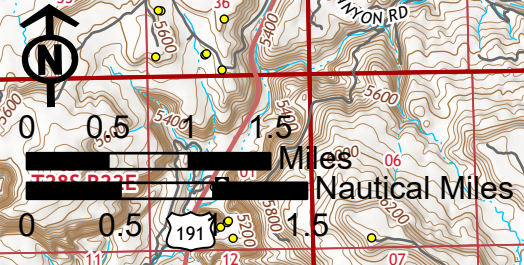
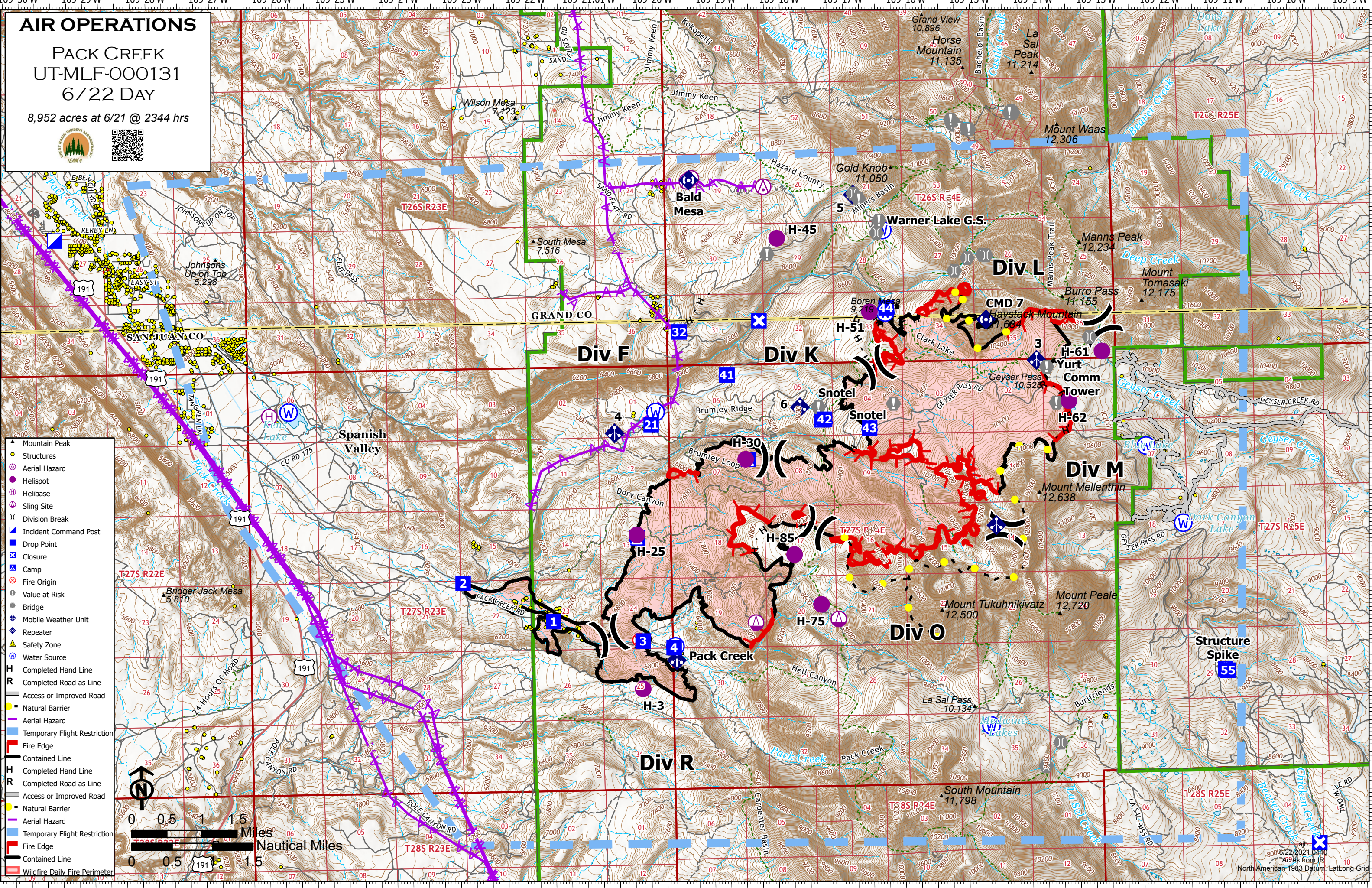


AIR OPERATIONS
PACK CREEK
UT-MLF-000131
6/22 DAY
8,952 acres at 6/21 @ 2344 hrs



8006/22/2021 0440
 Acres from IR
 North American 1983 Datum: LatLong Grid

FeatureCategory	Label	LatWGS84_DDM	LongWGS84_DDM
Camp	Structure Spike	38° 25.566' N	109° 11.168' W
Camp		38° 27.322' N	109° 20.393' W
Camp		38° 28.741' N	109° 17.446' W
Camp		38° 28.269' N	109° 18.616' W
Drop Point	1	38° 26.304' N	109° 21.729' W
Drop Point	2	38° 26.798' N	109° 23.143' W
Drop Point	3	38° 26.044' N	109° 20.326' W
Drop Point	4	38° 25.955' N	109° 19.840' W
Drop Point	21	38° 28.720' N	109° 20.138' W
Drop Point	32	38° 29.861' N	109° 19.670' W
Drop Point	41	38° 29.319' N	109° 18.931' W
Drop Point	42	38° 28.747' N	109° 17.405' W
Drop Point	43	38° 28.628' N	109° 16.698' W
Drop Point	44	38° 30.113' N	109° 16.405' W
Drop Point	55	38° 25.547' N	109° 11.129' W
Helibase		38° 28.897' N	109° 26.150' W
Helispot	H-25	38° 27.360' N	109° 20.394' W
Helispot	H-3	38° 25.452' N	109° 20.338' W
Helispot	H-30	38° 28.270' N	109° 18.660' W
Helispot	H-45	38° 30.998' N	109° 18.108' W
Helispot	H-51	38° 30.067' N	109° 16.668' W
Helispot	H-61	38° 29.528' N	109° 13.017' W
Helispot	H-62	38° 28.920' N	109° 13.553' W
Helispot	H-75	38° 26.458' N	109° 17.507' W
Helispot	H-85	38° 27.080' N	109° 17.917' W
Incident Command Post		38° 31.120' N	109° 29.487' W
Repeater	Bald Mesa	38° 31.735' N	109° 19.479' W
Repeater	Carpenter	38° 26.352' N	109° 00.960' W
Repeater	CMD 7	38° 29.945' N	109° 14.833' W
Safety Zone		38° 25.968' N	109° 19.805' W
Sling Site		38° 26.247' N	109° 18.543' W
Sling Site		38° 26.273' N	109° 17.240' W
Water Source	Blue Lake	38° 28.347' N	109° 12.351' W
Water Source	Dark Canyon Lake	38° 27.383' N	109° 11.789' W
Water Source	Dirty	38° 28.875' N	109° 20.065' W
Water Source	Kens Lake	38° 28.948' N	109° 25.844' W
Water Source	Lake Oowah	38° 30.055' N	109° 16.419' W
Water Source	Medicine Lakes	38° 24.920' N	109° 14.869' W
Water Source	Pumpkin	38° 25.971' N	109° 19.819' W
Water Source	Warner Lake	38° 31.075' N	109° 16.441' W