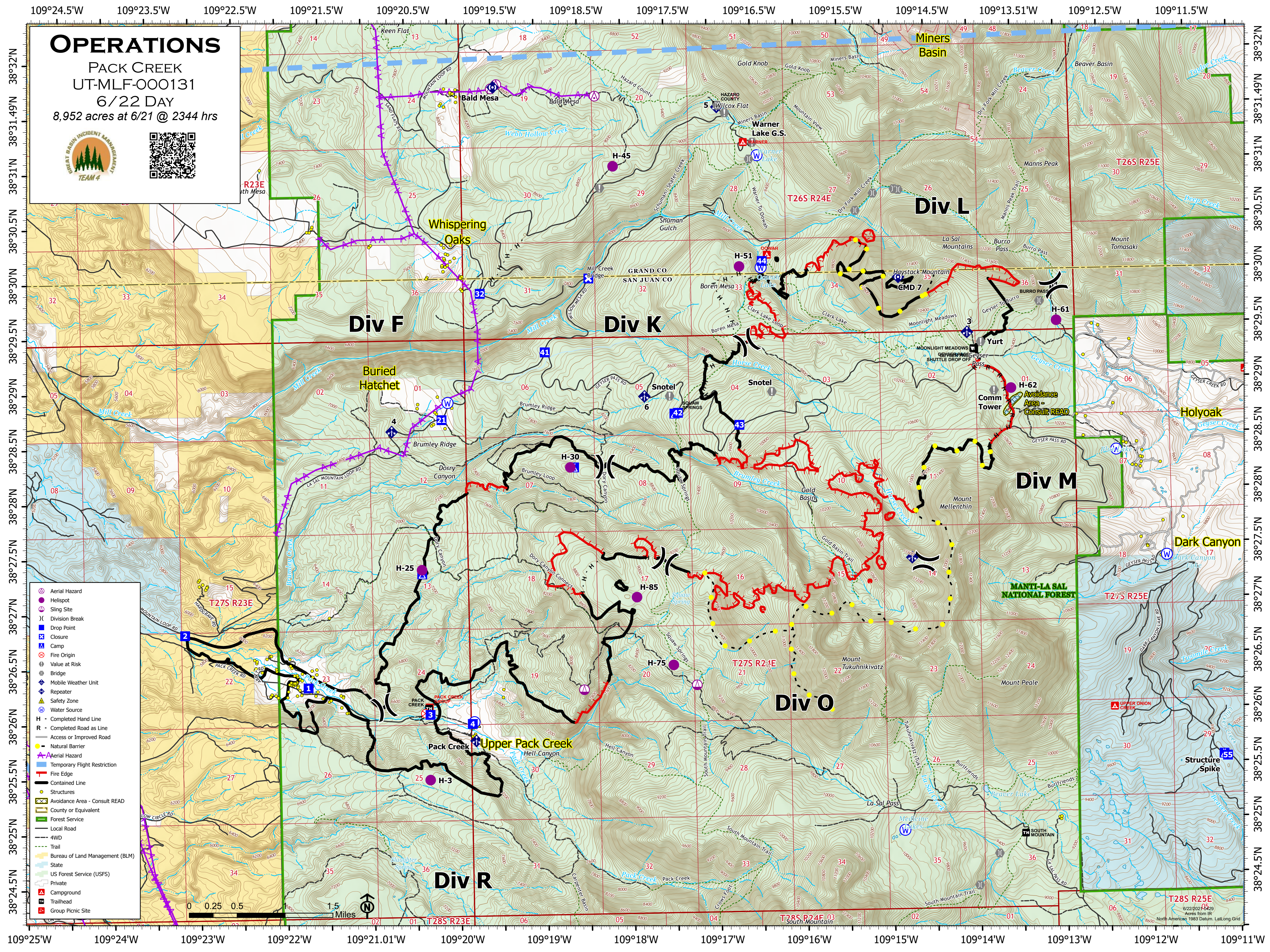


OPERATIONS

PACK CREEK
UT-MLF-000131

6/22 DAY

8,952 acres at 6/21 @ 2344 hrs



- ⊙ Aerial Hazard
- Helispot
- ⊙ Sling Site
- ⊙ Division Break
- ⊙ Drop Point
- ⊙ Closure
- ⊙ Camp
- ⊙ Fire Origin
- ⊙ Value at Risk
- ⊙ Bridge
- ⊙ Mobile Weather Unit
- ⊙ Repeater
- ⊙ Safety Zone
- ⊙ Water Source
- H - Completed Hand Line
- R - Completed Road as Line
- Access or Improved Road
- Natural Barrier
- ⊙ Aerial Hazard
- ⊙ Temporary Flight Restriction
- ⊙ Fire Edge
- ⊙ Contained Line
- ⊙ Structures
- ⊙ Avoidance Area - Consult READ
- ⊙ County or Equivalent
- ⊙ Forest Service
- ⊙ Local Road
- ⊙ 4WD
- ⊙ Trail
- ⊙ Bureau of Land Management (BLM)
- ⊙ State
- ⊙ US Forest Service (USFS)
- ⊙ Private
- ⊙ Campground
- ⊙ Trailhead
- ⊙ Group Picnic Site



T28S R25E
6/22/2024
Acres from IR
North American 1983 Datum, Lat/Long Grid