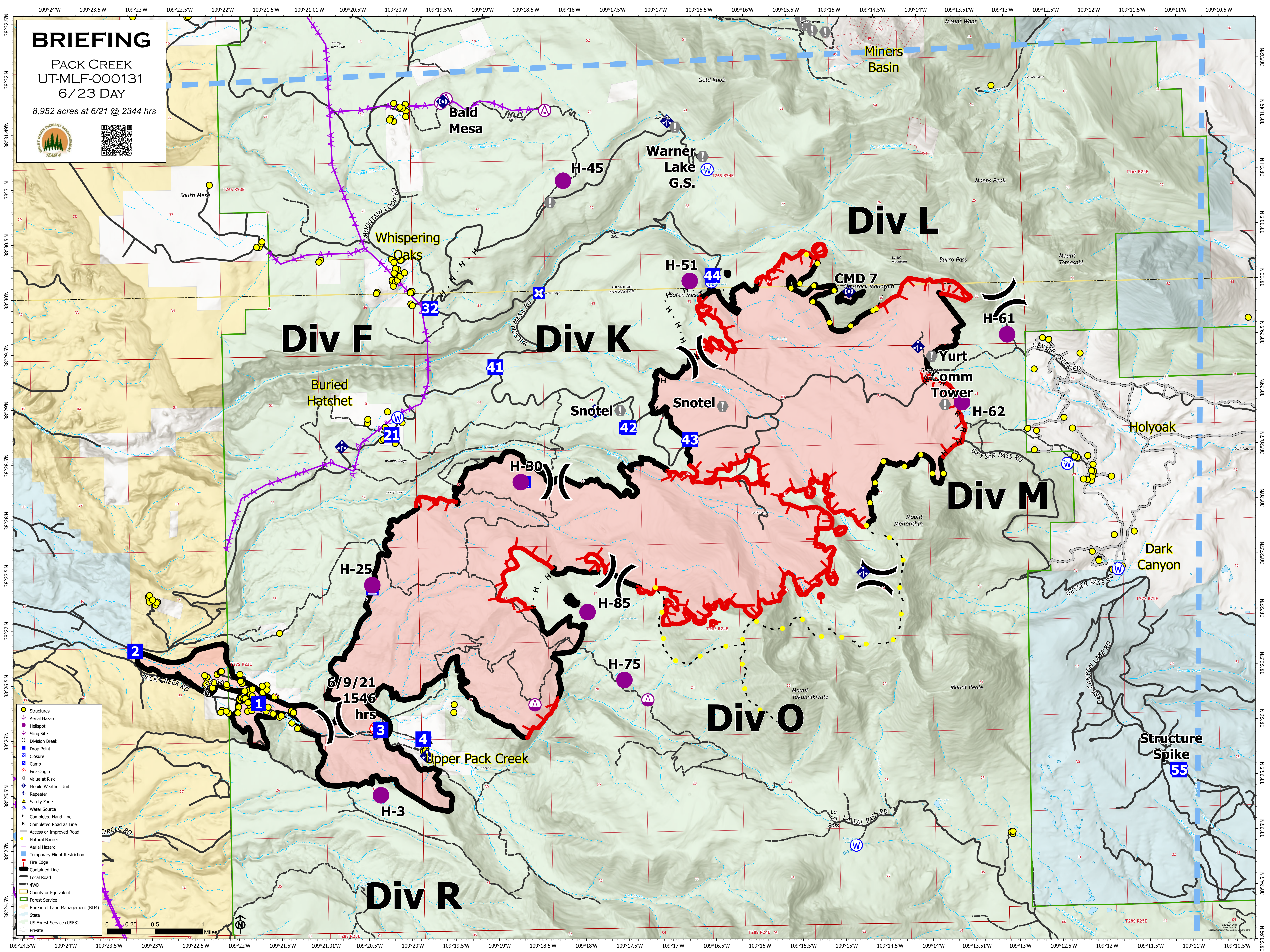


BRIEFING

PACK CREEK
UT-MLF-000131
6/23 DAY

8,952 acres at 6/21 @ 2344 hrs



- Structures
- Aerial Hazard
- Helispot
- Sling Site
- Division Break
- Drop Point
- Closure
- Camp
- Fire Origin
- Value at Risk
- Mobile Weather Unit
- Repeater
- Safety Zone
- Water Source
- Completed Hand Line
- Completed Road as Line
- Access or Improved Road
- Natural Barrier
- Aerial Hazard
- Temporary Flight Restriction
- Fire Edge
- Contained Line
- Local Road
- 4WD
- County or Equivalent
- Forest Service
- Bureau of Land Management (BLM)
- State
- US Forest Service (USFS)
- Private

6/9/21
1546
hrs

Div F

Div K

Div L

Div M

Div O

Div R

Miners Basin

Bald Mesa

Warner Lake G.S.

Whispering Oaks

Buried Hatchet

Snotel

Snotel

Yurt Comm Tower

Holyoak

Dark Canyon

Upper Pack Creek

Structure Spike

South Mesa

H-45

H-51

CMD 7

H-61

H-62

41

42

43

21

32

H-30

H-25

H-85

H-75

H-3

2

1

3

4

55

