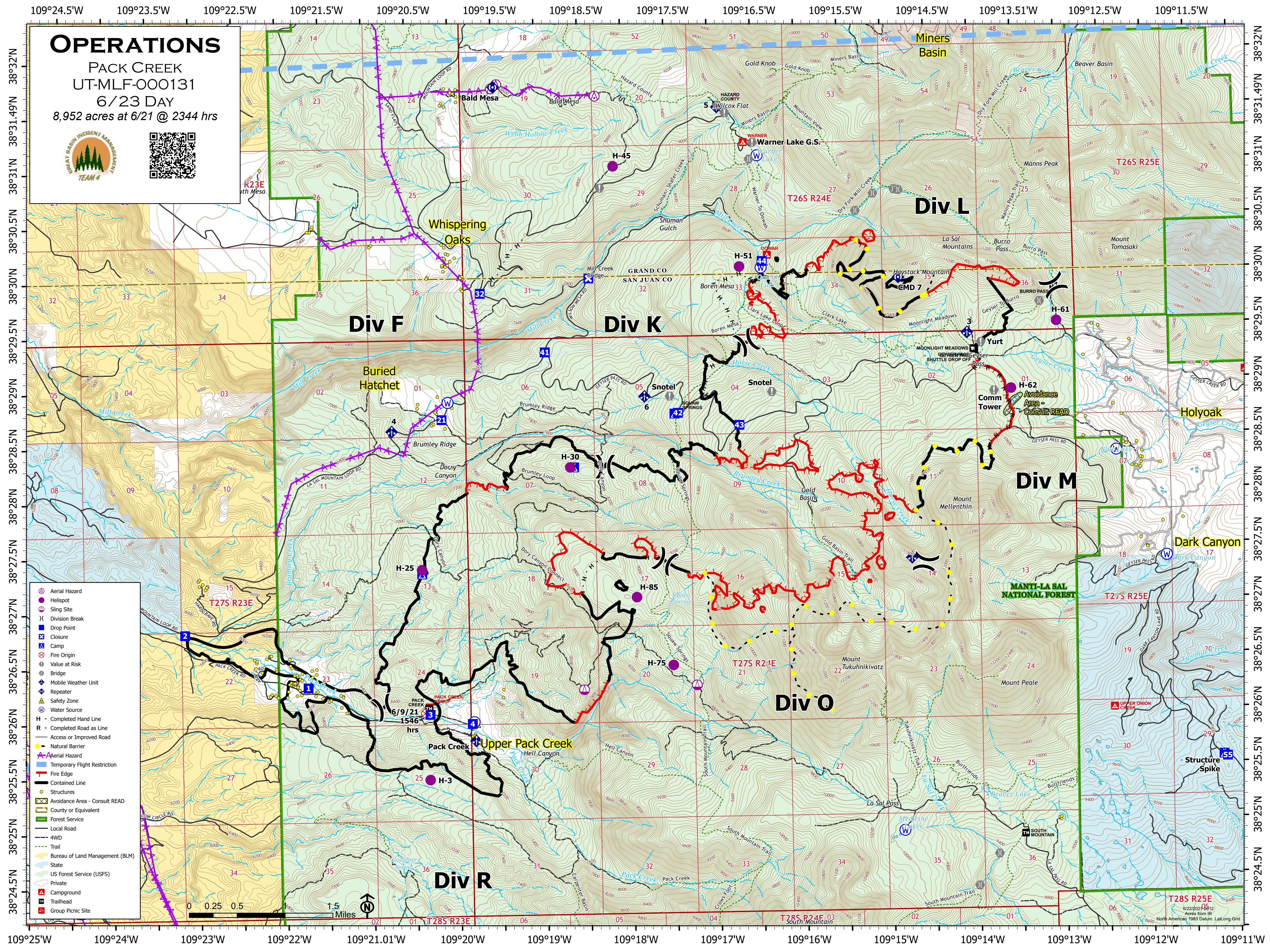


# OPERATIONS

PACK CREEK  
UT-MLF-000131

6/23 DAY

8,952 acres at 6/21 @ 2344 hrs



- ⊕ Aerial Hazard
- Helispot
- ▲ Sling Site
- ⌘ Division Break
- ⊕ Drop Point
- ⊖ Closure
- ⊠ Camp
- ⊗ Fire Origin
- ⊕ Value at Risk
- ⊕ Bridge
- ⊕ Mobile Weather Unit
- ⊕ Repeater
- ⊕ Safety Zone
- ⊕ Water Source
- H - Completed Hand Line
- R - Completed Road as Line
- Access or Improved Road
- Natural Barrier
- ⊕ Aerial Hazard
- ⊕ Temporary Flight Restriction
- ⊕ Fire Edge
- ⊕ Contained Line
- ⊕ Structures
- ⊕ Avoidance Area - Consult READ
- ⊕ County or Equivalent
- ⊕ Forest Service
- ⊕ Local Road
- ⊕ 4WD
- ⊕ Trail
- ⊕ Bureau of Land Management (BLM)
- ⊕ State
- ⊕ US Forest Service (USFS)
- ⊕ Private
- ⊕ Campground
- ⊕ Trailhead
- ⊕ Group Picnic Site



6/22/2023 12:08:12  
Acres from IR  
North American 1983 Datum, Lat/Long Grid