

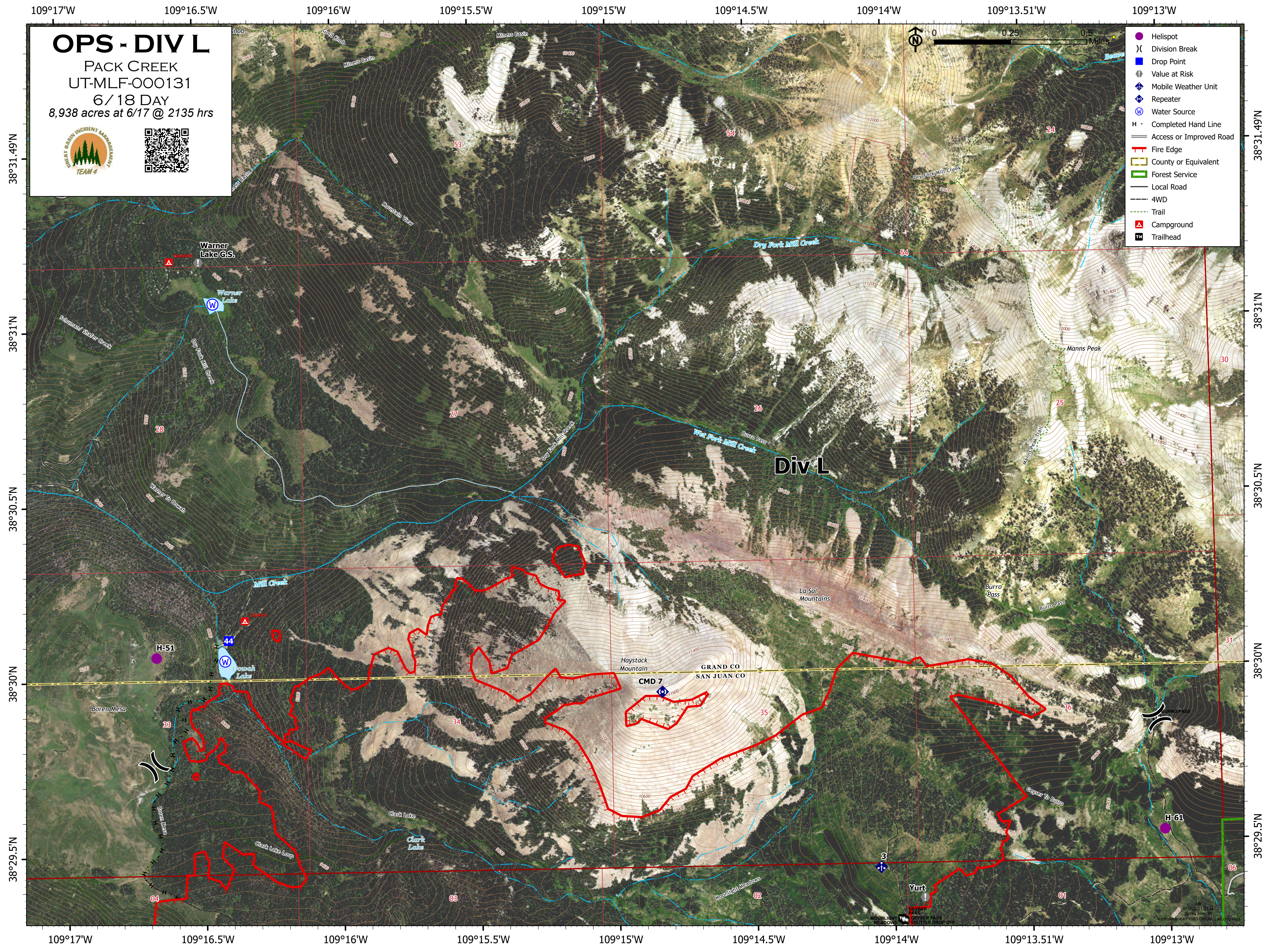
OPS - DIV L

PACK CREEK
UT-MLF-000131

6/18 DAY
8,938 acres at 6/17 @ 2135 hrs



- Helispot
- ⌋ Division Break
- Drop Point
- ⊕ Value at Risk
- ⊕ Mobile Weather Unit
- ⊕ Repeater
- ⊕ Water Source
- H · Completed Hand Line
- Access or Improved Road
- Fire Edge
- ▭ County or Equivalent
- ▭ Forest Service
- Local Road
- 4WD
- Trail
- ▲ Campground
- ⊕ Trailhead



Div L

GRAND CO
SAN JUAN CO

Yurt

H-61

H-51

CMD 7

38°31.49'N
38°31'N
38°30.5'N
38°30'N
38°30.5'N
38°29.5'N

109°17'W 109°16.5'W 109°16'W 109°15.5'W 109°15'W 109°14.5'W 109°14'W 109°13.51'W 109°13'W