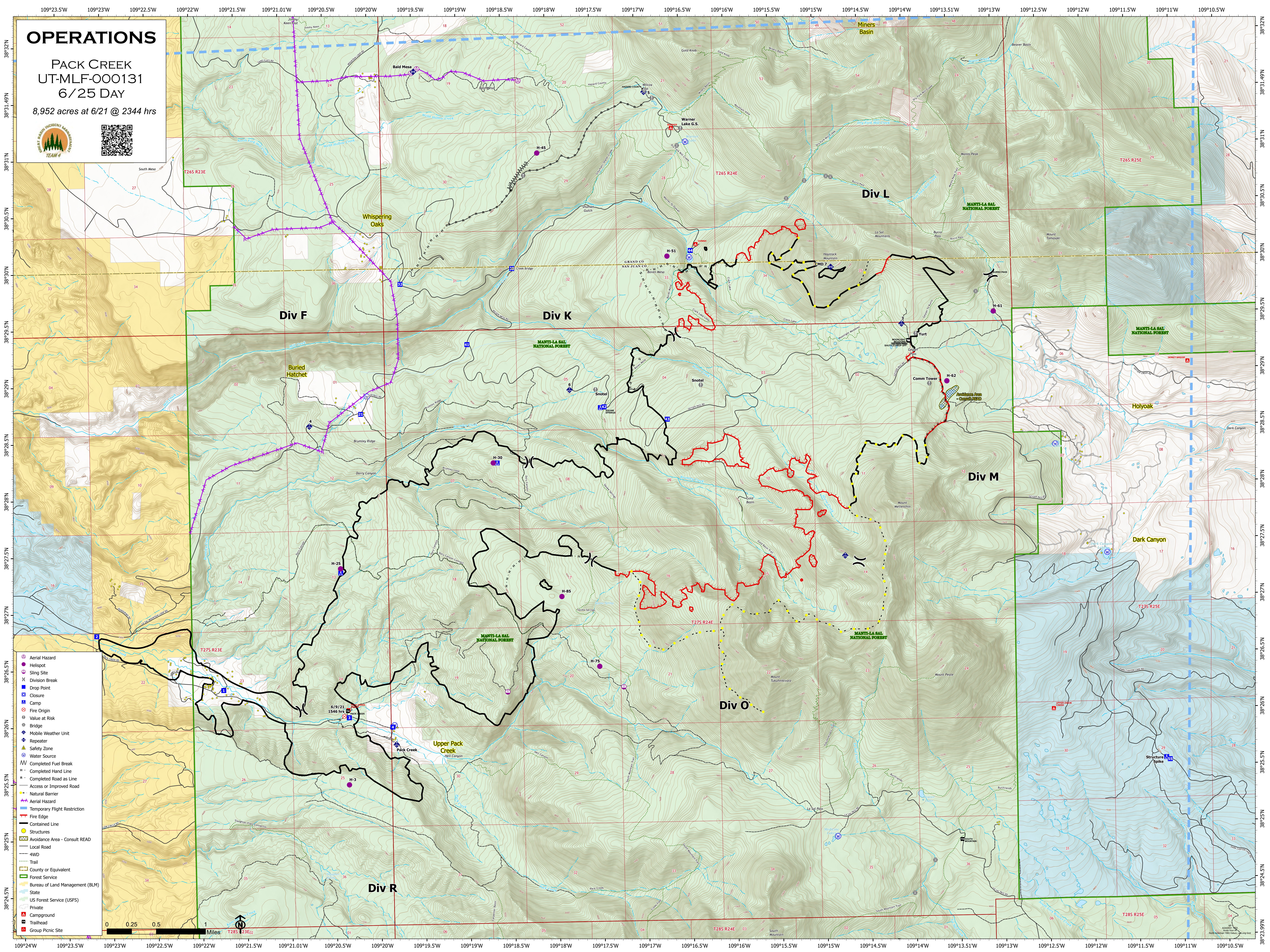


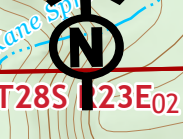
OPERATIONS

PACK CREEK
UT-MLF-000131
6/25 DAY

8,952 acres at 6/21 @ 2344 hrs



- Aerial Hazard
- Helispot
- Sling Site
- Division Break
- Drop Point
- Closure
- Camp
- Fire Origin
- Value at Risk
- Bridge
- Mobile Weather Unit
- Repeater
- Safety Zone
- Water Source
- Completed Fuel Break
- Completed Hand Line
- Completed Road as Line
- Access or Improved Road
- Natural Barrier
- Aerial Hazard
- Temporary Flight Restriction
- Fire Edge
- Contained Line
- Structures
- Avoidance Area - Consult READ
- Local Road
- 4WD
- Trail
- County or Equivalent
- Forest Service
- Bureau of Land Management (BLM)
- State
- US Forest Service (USFS)
- Private
- Campground
- Trailhead
- Group Picnic Site



© 2014 BLM