

Parleys Canyon Fire



Core Values: Respect, Integrity, Friendliness, Pride, Flexibility/Adaptability, Professionalism, Training/Mentoring, Family, Commitment

SUNDAY

AUGUST 15th, 2021

DAY: 0600 – 2200

PNN8FS (1522)

UT-NWS-000763

INCIDENT OBJECTIVES (ICS 202)

1. Incident Name:		2. Operational Period: DAY	
Parley's Canyon Fire		Date/Time From: 08/15/2021 0600 SUN	Date/Time To: 08/15/2021 2230 SUN
3. Objective(s):			
<p>Fire Fighter and Public safety are priority over all other incident objectives and incident requirements. All operational strategies and tactics should consider associated risk to firefighter/public safety and utilize options that have the highest probability for success combined with least safety risk.</p> <p>Follow CDC guidelines and take all steps to minimize exposure to COVID-19 for responders and public by practicing social distancing, maintain proper hygiene, and wearing masks when social distancing is not attainable.</p> <p>Keep public, cooperators and stakeholders informed of the fire activity.</p> <p>If possible, prevent loss and damage to any private and public facilities and infrastructure, including communities along the front, including but not limited to homes, resorts, transmission lines, municipal water systems and roads.</p>			
4. Operational Period Command Emphasis:			
<p>Continue to establish lines where feasible.</p> <p>Keep fire north of Lambs Canyon, south of I-80, west of Summit Park.</p>			
General Situational Awareness:			
Monitor self and crew members for COVID related symptoms.			
5. Site Safety Plan Required? Yes <input type="checkbox"/> No <input checked="" type="checkbox"/>			
Approved Site Safety Plan(s) Located at:			
6. Incident Action Plan (the items checked below are included in this Incident Action Plan):			
<input checked="" type="checkbox"/> ICS 202	<input type="checkbox"/> ICS 207	Other Attachments:	
<input checked="" type="checkbox"/> ICS 203	<input type="checkbox"/> ICS 208	<input type="checkbox"/>	_____
<input checked="" type="checkbox"/> ICS 204	<input checked="" type="checkbox"/> ICS 220	<input type="checkbox"/>	_____
<input checked="" type="checkbox"/> ICS 205	<input checked="" type="checkbox"/> Map/Chart	<input type="checkbox"/>	_____
<input type="checkbox"/> ICS 205A	<input checked="" type="checkbox"/> Weather Forecast/Tides/Currents	<input type="checkbox"/>	_____
<input checked="" type="checkbox"/> ICS 206			
7. Prepared by: JARED PEAK		Position/Title: PSC3	Signature:
8. Approved by Incident Commander:		Name: JAMES TURNER	Signature:
ICS 202	IAP Page	Date/Time: 08/15/2021 2000	

ORGANIZATION ASSIGNMENT LIST (ICS 203)

1. Incident Name: Parley's Canyon Fire		2. Operational Period: Date From: 08/15/21 Date To: 08/15/21 Time From: 0600 Time To: 2230	
3. Incident Commander(s) and Command Staff:		7. Operations Section:	
IC/UCs	James Turner	Chief	Guy Wilson
	Davis Oatway(t)	Deputy	Brian Moran (t)
Deputy		Staging Area	
Safety Officer	Shane Freeman, Dave Marsella (t)	Branch	
Public Info. Officer	Jennifer Hansen	Branch Director	
Liaison Officer		Deputy	
4. Agency/Organization Representatives:		Division/Group	DIV B Robert Sanders
Agency/Organization	Name	Division/Group	DIV E Brad Washa
USFS	Bekee Hotze	Division/Group	DIV M Ryan LaFontaine
USFS	Mike Krupski	Division/Group	DIV S Travis Wright
		Division/Group	
UT-FFSL	Brian Trick	Branch	
		Branch Director	
		Deputy	
5. Planning Section:		Division/Group	
Chief	Jared Peak	Division/Group	
Deputy	Sarah Flinders	Division/Group	
Resources Unit		Division/Group	
Situation Unit		Division/Group	
Documentation Unit		Branch	
Demobilization Unit		Branch Director	
Technical Specialists		Deputy	
GISS	Matt Panunto	Division/Group	
GISS (t)	Chad Stilson	Division/Group	
ITSS	Jennifer Biggs	Division/Group	
6. Logistics Section:		Division/Group	
Chief	Paul Chase	Division/Group	
Deputy	Muri Rawlings, PJ Abraham	Air Operations Branch	
Support Branch		Air Ops Branch Dir.	
Director			
Supply Unit			
Facilities Unit		8. Finance/Administration Section:	
Ground Support Unit		Chief	
Service Branch		Deputy	
Director		Time Unit	Shauna Haws
Communications Unit		Procurement Unit	
Medical Unit		Comp/Claims Unit	
Food Unit		Cost Unit	
9. Prepared by: Name: Jared Peak Position/Title: PSC3 Signature: _____			
ICS 203	IAP Page _____	Date/Time: 08/14/21 1900	

Spot Forecast for Parleys Canyon
National Weather Service Salt Lake City UT
930 PM MDT Sat Aug 14 2021

.DISCUSSION.. Winds are expected to be terrain-driven through the forecast period (Sunday night). Light east-northeast (downvalley) winds are expected into late Sunday morning before winds shift back to the west-northwest (upvalley) during the late morning and early afternoon. No shower or thunderstorm activity is anticipated Sunday. Wildfire smoke from distant wildfires is expected to move into the area tonight and Sunday morning, providing slightly less surface heating than what was observed on Saturday. Otherwise, very similar weather conditions are expected for Sunday compared to those observed on Saturday.

.SUNDAY...

Sky/weather.....Sunny, becoming mostly sunny (10-20 percent cloud cover).
Chance of pcpn.....0 percent.
CWR.....0 percent.
LAL.....1.
Max temperature.....86-88.
Min humidity.....17-20%.
Wind (20 ft).....East-northeast winds 3-8 mph becoming west-northwest winds 10-12 mph with gusts to around 21 mph around 1200 hours.
Haines Index.....5 ..moderate.

.SUNDAY NIGHT...

Sky/weather.....Mostly clear (15-25 percent cloud cover).
Chance of pcpn.....0 percent.
CWR.....0 percent.
LAL.....1.
Min temperature.....62-64.
Max humidity.....32-34%.
Wind (20 ft).....West-northwest winds 10-12 mph with gusts to around 21 mph then decreasing to 7-10 mph around 2000 hours. Winds then becoming south 6-9 mph around 2100 hours then becoming east-northeast 3-8 mph around 2200 hours.
Haines Index.....5 ..moderate.

Division/Group Assignment List (ICS 204 WF)
Controlled Unclassified Information//Basic

1. Incident Name:		3.				
Parley's Canyon Fire		Branch:		Division/Group:		
2. Operational Period: DAY		DIV E				
Date/Time From: 08/15/2021 0600 SUN	Date/Time To: 08/15/2021 2230 SUN					
4. Operations Personnel						
OPERATIONS CHIEF		GUY WILSON BRIAN MORAN (T)		PLANNING OPERATIONS		JARED PEAK
DIVISION/GROUP SUPERVISOR		BRAD WASHA		AIR ATTACK SUPERVISOR		
5. Resources Assigned this Period						
Strike Team / Task Force / Resource Designator	LWD	Leader	Number Persons	Drop Off PT./Time	Pick Up PT./Time	
T1 IHC RUBY				ICP/0600	ICP/2100	
T2IA REDROCKS			19	ICP/0600	ICP/2100	
T6 ENG 631			6	ICP/0600	ICP/2100	
T6 ENG 6127				ICP/0600	ICP/2100	
T3 ENG 3127				ICP/0600	ICP/2100	
STRIKE TEAM STRUCTURE ENG				ICP/0600	ICP/2100	
PARK CITY FIRE DEPT				ICP/0600	ICP/2100	
				ICP/0600	ICP/2100	
				ICP /0600	ICP/2100	
6. Control Operations/Work Assignments:						
Identify structure protection needs and mitigation measures in the Summit Park Community. Continue constructing fireline on the eastern flank. Look for other opportunities to safely engage in suppression opportunities.						
7. Special Instructions:						
8. Division/Group Communication Summary						
Function	Channel	RX Frequency N/W	RX Tone/NAC	TX Frequency N/W	TX Tone/NAC	Mode
COMMAND						
TACTICAL						
AIR TO GROUND						
AIR TO GROUND						
9. Prepared By (Resource Unit Leader)		Approved By (Planning Section Chief)		Date	Time	
		JARED PEAK		08/14/2021	2100	

Division/Group Assignment List (ICS 204 WF)
 Controlled Unclassified Information//Basic

1. Incident Name:			3.			
Parley's Canyon Fire			Branch:		Division/Group:	
2. Operational Period: DAY					DIV S	
Date/Time From:	Date/Time To:	SUN				SUN
08/15/2021 0600	08/15/2021 2230					
4. Operations Personnel						
OPERATIONS CHIEF		GUY WILSON BRIAN MORAN (T)		PLANNING OPERATIONS JARED PEAK		
DIVISION/GROUP SUPERVISOR		TRAVIS WRIGHT		AIR ATTACK SUPERVISOR		
5. Resources Assigned this Period						
Strike Team / Task Force / Resource Designator	LWD	Leader	Number Persons	Drop Off PT./Time	Pick Up PT./Time	
T1 IHC CEDAR CITY				ICP/0600	ICP/2100	
SQUAD 81			6	ICP/0600	ICP/2100	
UFA DELTA MODULE			9	ICP/0600	ICP/2100	
ENG UFA 1				ICP/0600	ICP/2100	
ENG UFA 2				ICP/0600	ICP/2100	
				ICP/0600	ICP/2100	
				ICP/0600	ICP/2100	
				ICP /0600	ICP/2100	
6. Control Operations/Work Assignments:						
Identify structure protection needs and mitigation in the Lambs Canyon Community. Continuing direct line construction to keep fire north of Lambs Canyon.						
7. Special Instructions:						
8. Division/Group Communication Summary						
Function	Channel	RX Frequency N/W	RX Tone/NAC	TX Frequency N/W	TX Tone/NAC	Mode
COMMAND						
TACTICAL						
AIR TO GROUND						
AIR TO GROUND						
9. Prepared By (Resource Unit Leader)		Approved By (Planning Section Chief)		Date	Time	
		JARED PEAK		08/14/2021	2100	

Incident:	Parleys Canyon Fire	Date:	August 15, 2021	Shift:	Day
------------------	---------------------	--------------	-----------------	---------------	-----

SAFETY MESSAGE

SAFETY IS OUR FIRST PRIORITY

Fire fighter safety comes first on every Incident, every time

Driving is one of our most concerning safety issues. Watch your speed, be very careful and use spotters. Drive with headlights, seatbelts and emergency lights in the fire area.

MAJOR HAZARDS AND RISKS

- | | |
|--|--|
| <ul style="list-style-type: none"> • Driving – Always drive with headlights on & seatbelts buckled. Use extra caution around ICP, Hwy. I-80, on dozer lines and steep two tracks • Steep slopes, rolling material-watch footing • Due to fire activity – do not become complacent, stay on top of your Situational Awareness (S.A.) • Rattlesnakes, bees & wasps are known to inhabit the fire area, be heads up and alert. Communicate to appropriate personnel when hazard is spotted • Air operations – refer to IRPG page 46 for Aviation Watchout Situations | <ul style="list-style-type: none"> • Dehydration-drink plenty of fluids • Traffic congestion at ICP-use spotters • Gusty and erratic winds • Follow COVID – 19 Safety Guidelines • Practice social distancing – briefings, eating, etc. • Wear facemasks where appropriate (ICP and public) • Wash and sanitize hands • When in ICP, use assigned facilities • Minimize # of crew when obtaining meals and supplies • Power Line Safety in the fire area, IRPG pg 24 |
|--|--|

10 STANDARD FIRE ORDERS

We Don't Bend Them, We Don't Break Them

FIRE BEHAVIOR

1. Keep informed on fire weather conditions and forecasts.
2. Know what your fire is doing at all times.
3. Base all actions on current and expected behavior of the fire.

FIRELINE SAFETY

4. Identify escape routes and safety zones, and make them known.
5. Post lookouts when there is possible danger.
6. Be alert. Keep calm. Think clearly. Act decisively.

ORGANIZATIONAL CONTROL

7. Maintain prompt communication with your forces, your supervisor and adjoining forces.
8. Give clear instructions and insure they are understood.
9. Maintain control of your forces at all times.

IF YOU CONSIDER 1-9, THEN

10. Fight fire aggressively, having provided for safety first.

18 SITUATIONS THAT SHOUT WATCH OUT

- | | |
|--|---|
| <ul style="list-style-type: none"> • Fire not scouted and sized up • In country not seen in daylight • Safety zones and escape routes not identified • Unfamiliar with weather and local factors influencing fire behavior • Uninformed on strategy, tactics, and hazards • Instructions and assignments not clear • No communication link with crew members or supervisor • Constructing line without safe anchor point • Building fireline downhill with fire below | <ul style="list-style-type: none"> • Attempting frontal assault on fire • Unburned fuel between you and fire • Cannot see main fire, not in contact with anyone who can • On a hillside where rolling material can ignite fuel below • Weather becoming hotter and dryer • Wind increases and/or changes direction • Getting frequent spots across line • Terrain and fuels make escape to safety zones difficult • Taking nap near fireline |
|--|---|

Coordinate non-emergency medical events through Divisions or closest responders with radio communication. Emergency Medivac will be controlled by the Division Supervisor or delegated to the next in command.

WILDLAND FIRE COVID-19 SCREENING TOOL

Today or in the past 24 hours, have you had any of the following symptoms¹?

Symptom
Cough more than expected?
Shortness of breath or difficulty breathing?
Fever? Chills?
Muscle pain, outside your normal for firefighting?
Sore throat?
New loss of taste or smell?
Fatigue, outside your normal for firefighting?
Headache, outside your normal for firefighting?
Congestion or runny nose, outside your normal for firefighting?
Nausea or vomiting
Diarrhea
<i>* Take temperature with no-touch thermometer, if available *</i>

Instructions for Screening

Item	What to Do
If resource has a cough that is more than expected, shortness of breath or difficulty breathing, or any other symptoms listed.	DO NOT MOBILIZE
At Entries: Consider adequate number of personnel needed for screening. Although medical personnel are ideal, screeners do not have to be medically trained.	DO NOT ANNOUNCE Ask individual to step aside and follow the steps below.
If resource has cough, shortness of breath or difficulty breathing, or any other listed symptoms including fever (over 100.4) at entry.	

Steps to follow
Escort symptomatic individual to isolation area.
Isolation support personnel should begin documentation.
Have symptomatic individual contact Supervisor for further direction.
Notify public health officials.
Have individual transported as appropriate.
Protect and secure any collected Personal Identifiable Information (PII) or Personal Health Information (PHI).

¹ Symptoms of Coronavirus
<https://www.cdc.gov/coronavirus/2019-ncov/symptoms-testing/symptoms.html>

INCIDENT RADIO COMMUNICATIONS PLAN

1. Incident Name Parley's Canyon Fire	2. Date / Time Prepared 08/14/2021	3. Operational Period Date/Time 08/15/2021 0600-2230
---	--	--

4. Basic Radio Channel Utilization

Radio Type/ Cache	Channel	Function	Frequency/ Tone	Assignment	Remarks
King	1	TAC 1	168.0500	DIV B / DIV S	
King	2	TAC 7	169.1875	DIV E	
King	3	TAC 8	167.3000	DIV M	
King	4				
King	5	AIR/Ground Primary	169.1500	A/G Primary	
King	6	AIR/Ground Secondary	169.2000	A/G Secondary	
King	7	COMMAND	TX: 164.9375 Tone: 110.9 RX: 173.7750	Fairmont Repeater	
King	8	VMED	TX: 155.3400 RX: 155.3400 Tone: 156.7	Air Emergency	

5. Prepared by (Communications Unit)
Jared Peak

IAP

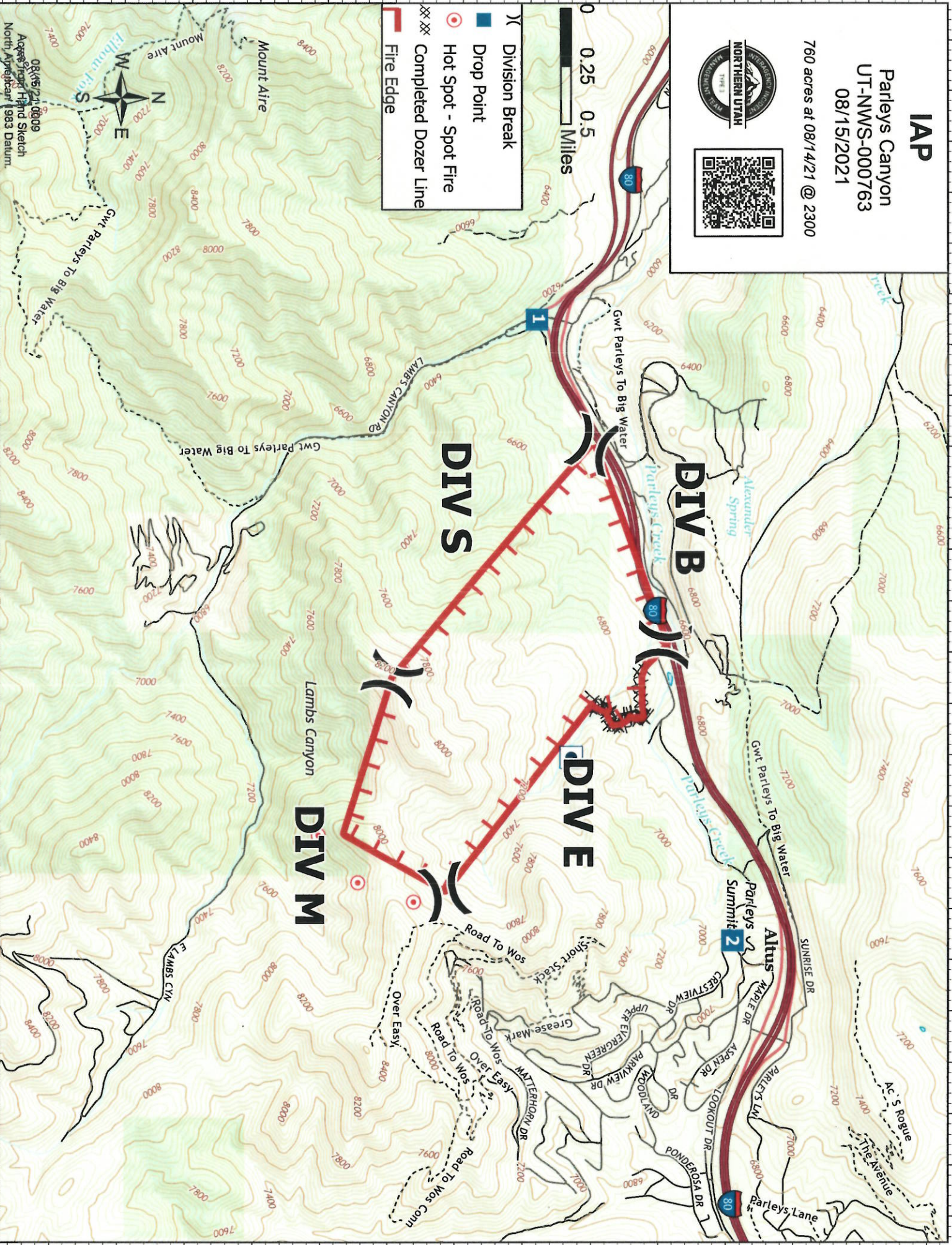
Parleys Canyon
UT-NWS-000763
08/15/2021

760 acres at 08/14/21 @ 2300



0 0.25 0.5 Miles

- Division Break
- Drop Point
- Hot Spot - Spot Fire
- Completed Dozer Line
- Fire Edge



08/15/21 @ 0809
Ages from Hand Sketch
North Arrow from 1983 Datum.

MEDICAL PLAN (ICS 206 WF)

Controlled Unclassified Information//Basic

1. Incident/Project Name		2. Operational Period					
Parley's Canyon Fire		Date/Time 8/15/2021 2230					
3. Ambulance Services							
Name	Complete Address	Phone & EMS Frequency	Advanced Life Support (ALS) Yes <input type="checkbox"/> No <input type="checkbox"/>				
Click or tap here to enter text.	Click or tap here to enter text.	Click or tap here to enter text.	<input type="checkbox"/>	<input type="checkbox"/>	<input type="checkbox"/>		
4. Air Ambulance Services							
Name	Phone	Type of Aircraft & Capability					
Intermountain Life Flight	801-321-3330	Hoist capable/ ALS					
AirMED	801-581-2500	ALS					
5. Hospitals							
Name Complete Address	GPS Datum – WGS 84 Coordinate Standard Degrees Decimal Minutes DD° MM.MMM' N - Lat DD° MM.MMM' W - Long	Travel Time Air	Gnd	Phone	Helipad Yes <input type="checkbox"/> No <input type="checkbox"/>	Level of Care Facility	
University of Utah Medical Center	Lat: 50 N Medical Dr	X	X	801-581-2121	<input checked="" type="checkbox"/>	<input type="checkbox"/>	Trauma Level 1/ Burn Center
	Long: Salt Lake City, UT						
	VHF: Click or tap here to enter text.						
Intermountain Medical Center	Lat: 5121 Cottonwood St	X	X	801-507-7000	<input checked="" type="checkbox"/>	<input type="checkbox"/>	Trauma Level 1
	Long: Murray, UT						
	VHF: Click or tap here to enter text.						
Redstone Medical Clinic	Lat: 1743 Redstone Ctr. Dr. #115, Park City, UT	X	X	435-658-9200	<input type="checkbox"/>	<input checked="" type="checkbox"/>	Instacare
	Long: Click or tap here to enter text.						
	VHF: Click or tap here to enter text.						
Click or tap here to enter text.	Lat: Click or tap here to enter text.	Click or tap here to enter text.	Click or tap here to enter text.	Click or tap here to enter text.	<input type="checkbox"/>	<input type="checkbox"/>	Click or tap here to enter text.
	Long: Click or tap here to enter text.						
	VHF: Click or tap here to enter text.						
6. Division Branch Group		Area Location Capability					
		EMS Responders & Capability:					
		Equipment Available on Scene:					
		Medical Emergency Channel:					
		ETA for Ambulance to Scene:					
		Air:					
		Ground: Click or tap here to enter text.					
		Approved Helispot: Click or tap here to enter text.					
		Lat: Click or tap here to enter text.					
Click or tap here to enter text.		Long: Click or tap here to enter text.					
		EMS Responders & Capability: Click or tap here to enter text.					
		Equipment Available on Scene: Click or tap here to enter text.					
		Medical Emergency Channel: Click or tap here to enter text.					
		ETA for Ambulance to Scene: Click or tap here to enter text.					
		Air: Click or tap here to enter text.					
		Ground: Click or tap here to enter text.					
		Approved Helispot: Click or tap here to enter text.					
Lat: Click or tap here to enter text.							
Long: Click or tap here to enter text.							

MEDICAL PLAN (ICS 206 WF)

Controlled Unclassified Information//Basic

Medical Incident Report					
FOR A NON-EMERGENCY INCIDENT, WORK THROUGH CHAIN OF COMMAND TO REPORT AND TRANSPORT INJURED PERSONNEL AS NECESSARY. FOR A MEDICAL EMERGENCY: IDENTIFY ON SCENE INCIDENT COMMANDER BY NAME AND POSITION AND ANNOUNCE "MEDICAL EMERGENCY" TO INITIATE RESPONSE FROM IMT COMMUNICATIONS/DISPATCH.					
Use the following items to communicate situation to communications/dispatch.					
1. CONTACT COMMUNICATIONS / DISPATCH (Verify correct frequency prior to starting report) <i>Ex: "Communications, Div. Alpha. Stand-by for Emergency Traffic."</i>					
2. INCIDENT STATUS: Provide incident summary (including number of patients) and command structure. <i>Ex: "Communications, I have a Red priority patient, unconscious, struck by a falling tree. Requesting air ambulance to Forest Road 1 at (Lat./Long.) This will be the Trout Meadow Medical, IC is TFLD Jones. EMT Smith is providing medical care."</i>					
Severity of Emergency / Transport Priority	<input type="checkbox"/> RED / PRIORITY 1 Life or limb threatening injury or illness. Evacuation need is IMMEDIATE <i>Ex: Unconscious, difficulty breathing, bleeding severely, 2^o - 3^o burns more than 4 palm sizes, heat stroke, disoriented.</i> <input type="checkbox"/> YELLOW / PRIORITY 2 Serious Injury or illness. Evacuation may be DELAYED if necessary. <i>Ex: Significant trauma, unable to walk, 2^o - 3^o burns not more than 1-3 palm sizes.</i> <input type="checkbox"/> GREEN / PRIORITY 3 Minor Injury or illness. Non-Emergency transport <i>Ex: Sprains, strains, minor heat-related illness.</i>				
Nature of Injury or Illness & Mechanism of Injury			<i>Brief Summary of Injury or Illness (Ex: Unconscious, Struck by Falling Tree)</i>		
Transport Request			<i>Air Ambulance / Short Haul/Hoist Ground Ambulance / Other</i>		
Patient Location			<i>Descriptive Location & Lat. / Long. (WGS84)</i>		
Incident Name			<i>Geographic Name + "Medical" (Ex: Trout Meadow Medical)</i>		
On-Scene Incident Commander			<i>Name of on-scene IC of incident within an incident (Ex: TFLD Jones)</i>		
Patient Care			<i>Name of Care Provider (Ex: EMT Smith)</i>		
3. INITIAL PATIENT ASSESSMENT: Complete this section for each patient as applicable (start with the most severe patient)					
Patient Assessment: See IRPG page 106					
Treatment:					
4. TRANSPORT PLAN:					
Evacuation Location (if different): (Descriptive Location (drop point, intersection, etc.) or Lat. / Long.) Patient's ETA to Evacuation Location:					
Helispot / Extraction Site Size and Hazards:					
5. ADDITIONAL RESOURCES / EQUIPMENT NEEDS:					
<i>Example: Paramedic/EMT, Crews, Immobilization Devices, AED, Oxygen, Trauma Bag, IV/Fluid(s), Splints, Rope rescue, Wheeled litter, HAZMAT, Extrication</i>					
6. COMMUNICATIONS: Identify State Air/Ground EMS Frequencies and Hospital Contacts as applicable					
Function	Channel Name/Number	Receive:(RX)	Tone/NAC *	Transmit (TX)	Tone/NAC *
COMMAND					
AIR-TO-GRND					
TACTICAL					
7. CONTINGENCY: Considerations: If primary options fail, what actions can be implemented in conjunction with primary evacuation method? Be thinking ahead.					
8. ADDITIONAL INFORMATION: Updates/Changes, etc.					
REMEMBER: Confirm ETA's of resources ordered. Act according to your level of training. Be Alert. Keep Calm. Think Clearly. Act Decisively.					

