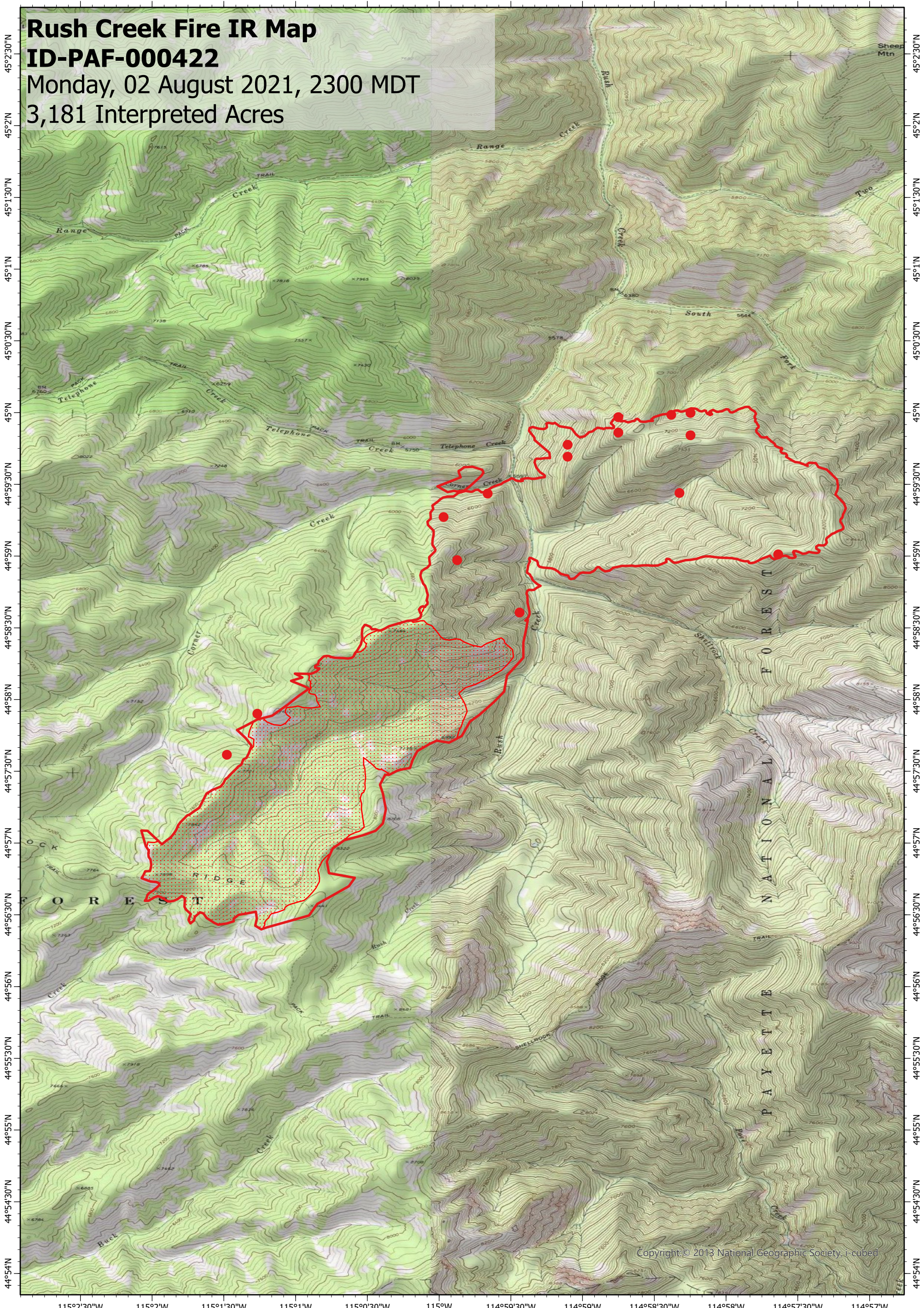


115°2'30"W 115°2'W 115°1'30"W 115°1'W 115°0'30"W 115°W 114°59'30"W 114°59'W 114°58'30"W 114°58'W 114°57'30"W 114°57'W



Rush Creek Fire IR Map
ID-PAF-000422
 Monday, 02 August 2021, 2300 MDT
 3,181 Interpreted Acres

Legend

- Isolated Heat
- Burn Perimeter
- Scattered Heat

Scale: 1:45,000
 Projection: WGS 1984
 Produced by: Owyhee Air Research, LLC
 IR Interpreter: K. Hanks
 Contact: fire@owyheear.com (208) 442-5405



Copyright: © 2013 National Geographic Society, i-cubed