

115°2'30"W 115°2'W 115°1'30"W 115°1'W 115°0'30"W 115°W 114°59'30"W 114°59'W 114°58'30"W 114°58'W 114°57'30"W 114°57'W

# Rush Creek Fire IR Map

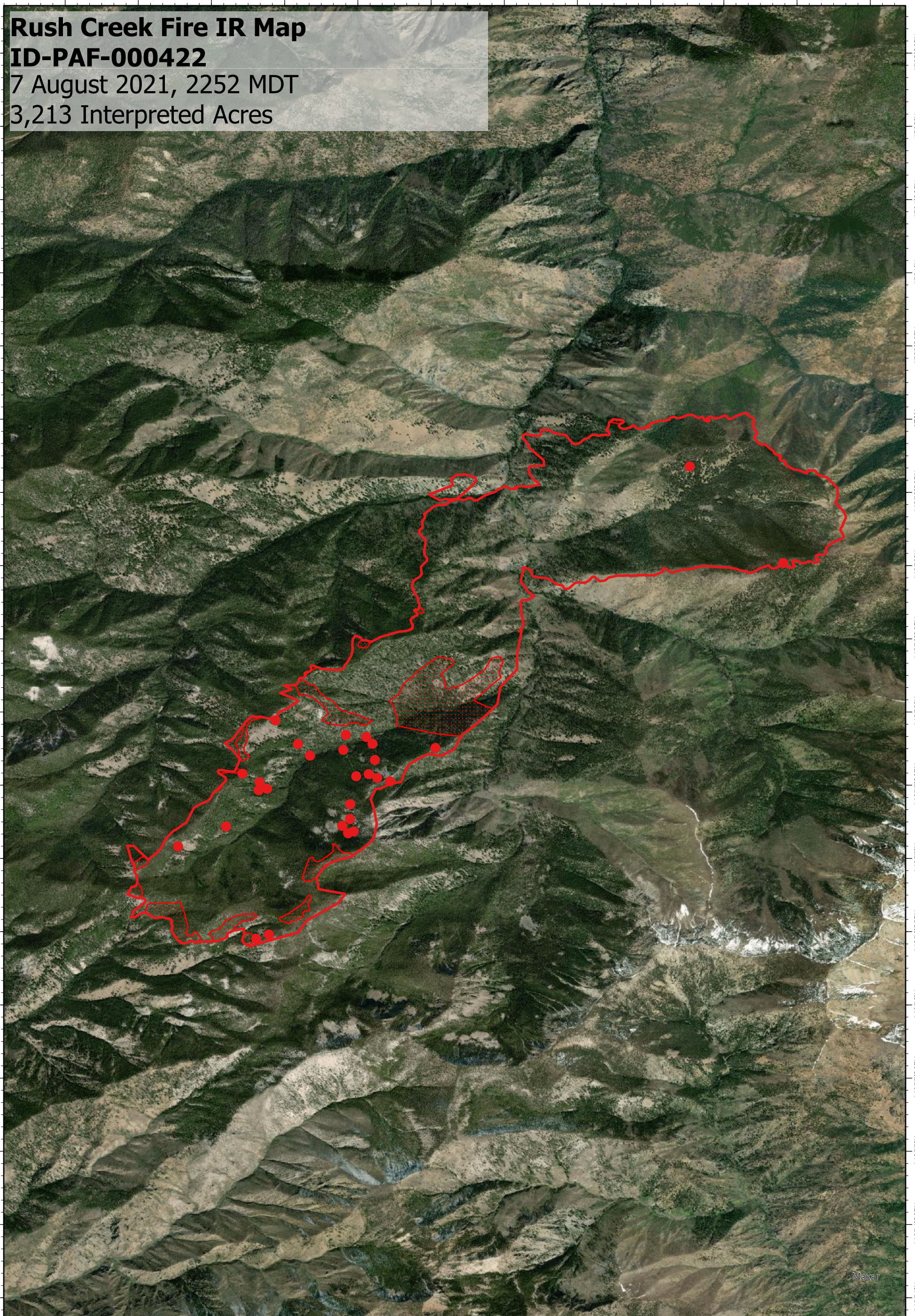
## ID-PAF-000422

7 August 2021, 2252 MDT

3,213 Interpreted Acres

45°2'30"N  
45°2'N  
45°1'30"N  
45°1'N  
45°0'30"N  
45°0'N  
44°59'30"N  
44°59'N  
44°58'30"N  
44°58'N  
44°57'30"N  
44°57'N  
44°56'30"N  
44°56'N  
44°55'30"N  
44°55'N  
44°54'30"N  
44°54'N

45°2'30"N  
45°2'N  
45°1'30"N  
45°1'N  
45°0'30"N  
45°0'N  
44°59'30"N  
44°59'N  
44°58'30"N  
44°58'N  
44°57'30"N  
44°57'N  
44°56'30"N  
44°56'N  
44°55'30"N  
44°55'N  
44°54'30"N  
44°54'N



115°2'30"W 115°2'W 115°1'30"W 115°1'W 115°0'30"W 115°W 114°59'30"W 114°59'W 114°58'30"W 114°58'W 114°57'30"W 114°57'W

### Legend

- Isolated Heat
- Burn Perimeter
- Scattered Heat

Scale: 1:45,000  
 Projection: WGS 1984  
 Produced by: Owyhee Air Research, LLC  
 IR Interpreter: S. Osberg  
 Contact: [fire@owyheear.com](mailto:fire@owyheear.com) (208) 442-5405

