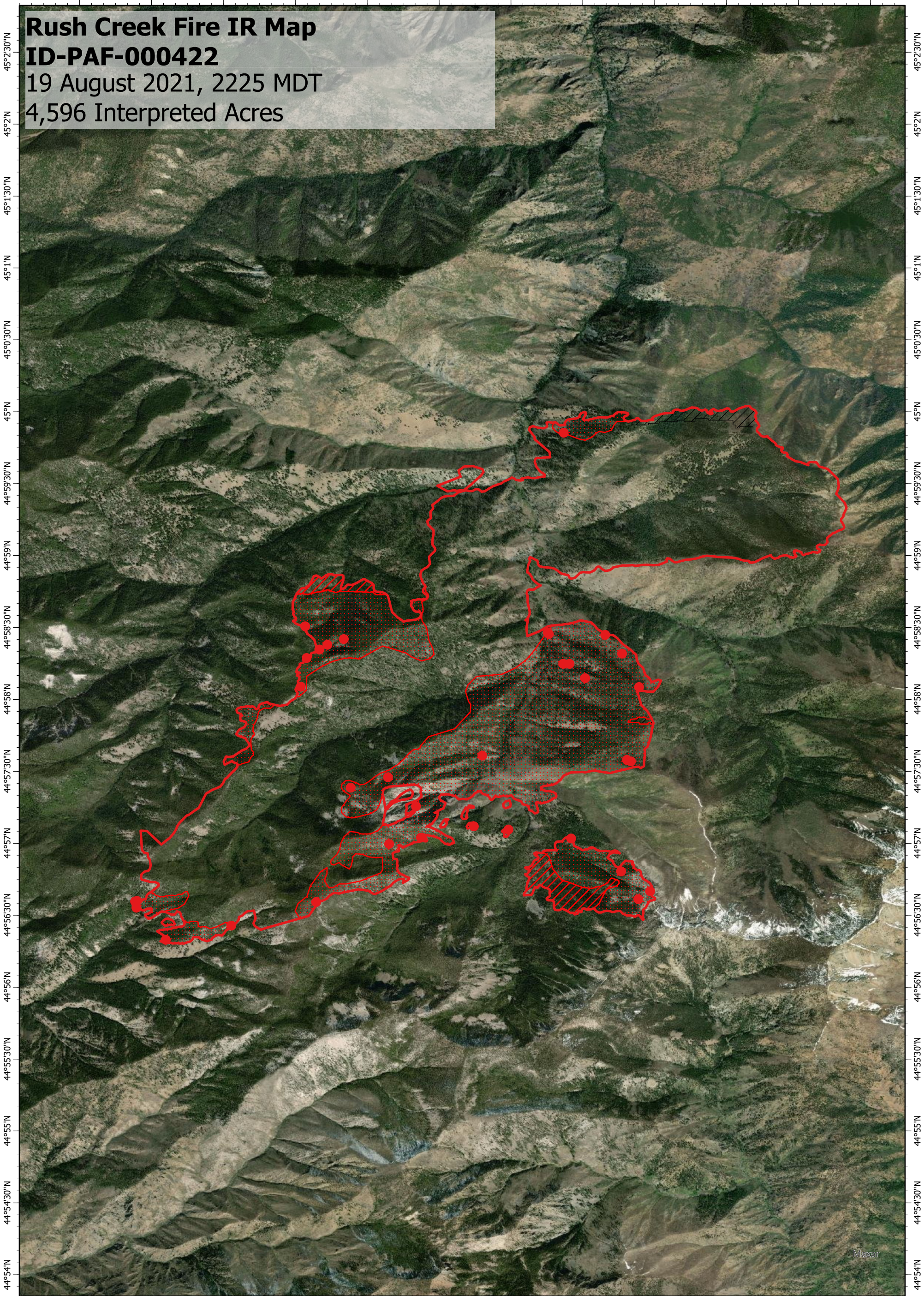


115°2'30"W 115°2'W 115°1'30"W 115°1'W 115°0'30"W 115°W 114°59'30"W 114°59'W 114°58'30"W 114°58'W 114°57'30"W 114°57'W



**Rush Creek Fire IR Map**  
**ID-PAF-000422**  
 19 August 2021, 2225 MDT  
 4,596 Interpreted Acres

**Legend**

- Isolated Heat
- ▭ Burn Perimeter
- ▨ Intense Heat
- ▤ Scattered Heat
- ▧ No Data

Scale: 1:45,000  
 Projection: WGS 1984  
 Produced by: Owyhee Air Research, LLC  
 IR Interpreter: M. Beers  
 Contact: fire@owyheear.com (208) 442-5405



115°2'30"W 115°2'W 115°1'30"W 115°1'W 115°0'30"W 115°W 114°59'30"W 114°59'W 114°58'30"W 114°58'W 114°57'30"W 114°57'W