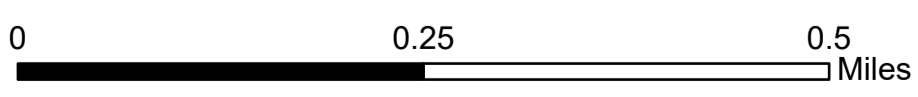
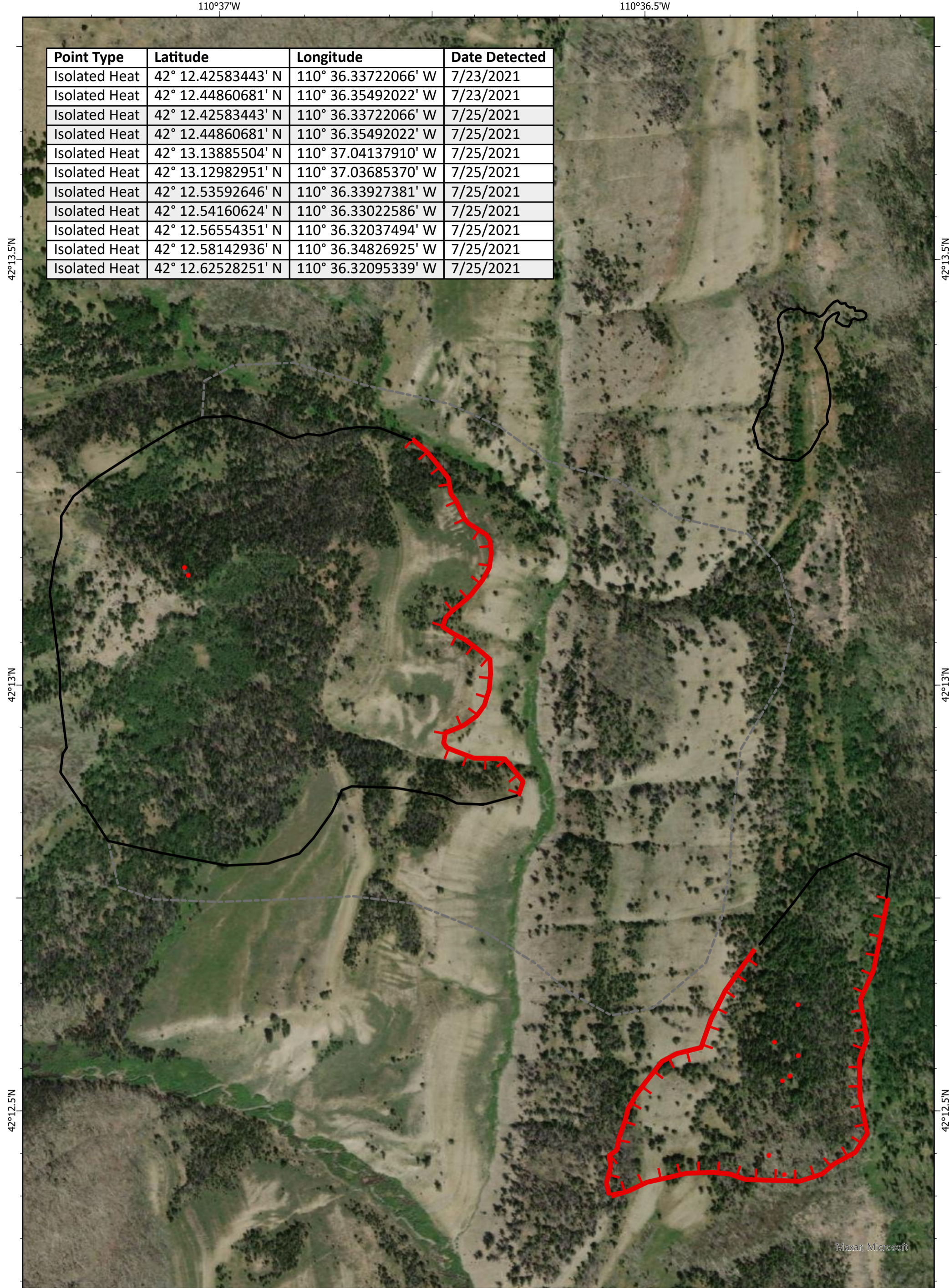


Point Type	Latitude	Longitude	Date Detected
Isolated Heat	42° 12.42583443' N	110° 36.33722066' W	7/23/2021
Isolated Heat	42° 12.44860681' N	110° 36.35492022' W	7/23/2021
Isolated Heat	42° 12.42583443' N	110° 36.33722066' W	7/25/2021
Isolated Heat	42° 12.44860681' N	110° 36.35492022' W	7/25/2021
Isolated Heat	42° 13.13885504' N	110° 37.04137910' W	7/25/2021
Isolated Heat	42° 13.12982951' N	110° 37.03685370' W	7/25/2021
Isolated Heat	42° 12.53592646' N	110° 36.33927381' W	7/25/2021
Isolated Heat	42° 12.54160624' N	110° 36.33022586' W	7/25/2021
Isolated Heat	42° 12.56554351' N	110° 36.32037494' W	7/25/2021
Isolated Heat	42° 12.58142936' N	110° 36.34826925' W	7/25/2021
Isolated Heat	42° 12.62528251' N	110° 36.32095339' W	7/25/2021



JHaddon
7/25/2021 1613
Acres from Hand Sketch
WGS 1984 Datum. LatLong Grid

- Other
- ▬ Fire Edge
- Contained Line
- IR Isolated Heat Source

MMA Flight
Shale Creek
WYBTF2109
July 25, 2021 Ops Planning
189 acres at July 21, 2021 at 2000

Maxar, Microsoft