

# Smith Fire

FS: P4N8C9 (0402) BLM:  
ID-BOF-000895

**Incident Commander**

**Ben Oakleaf**

---

**Operations**

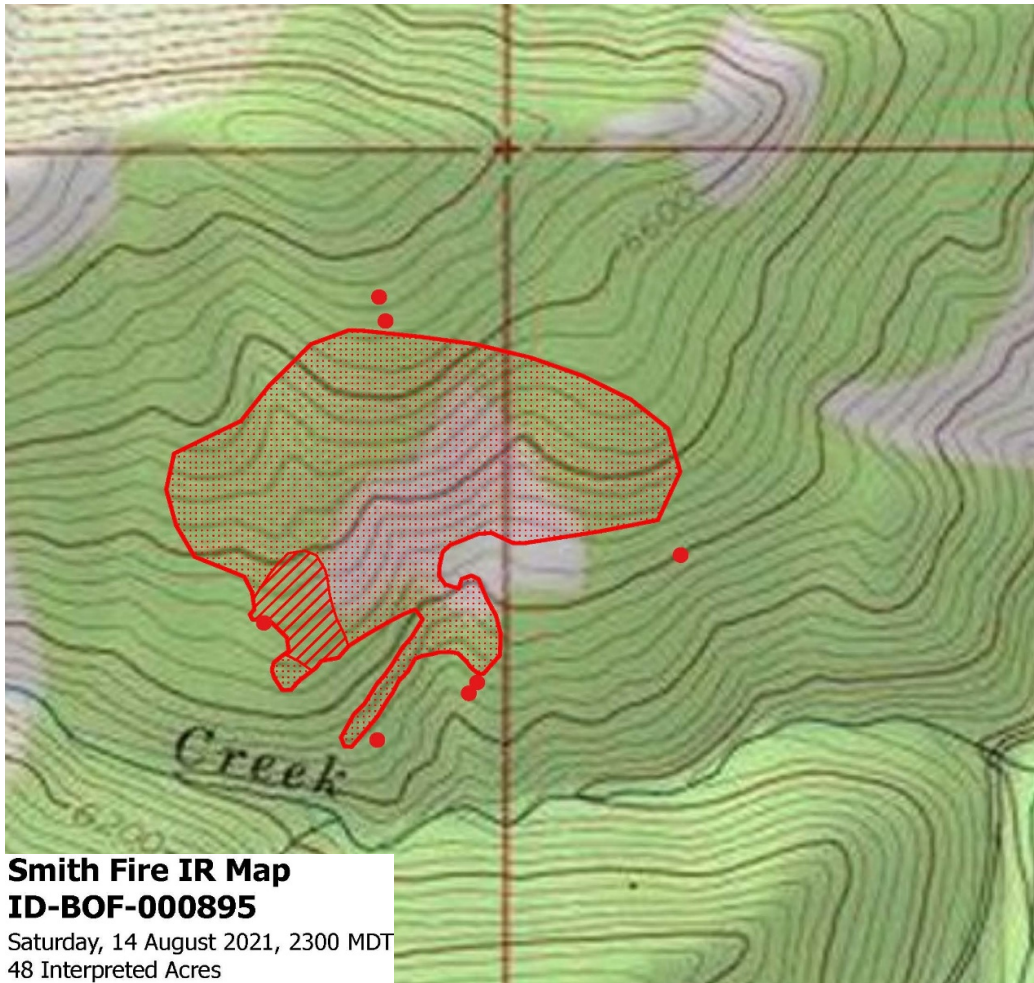
**Josh Domingez**

---

**Safety**

**Guy Blom**

---



## Operational Period

**Day/Night Shift**

**August 16, 2021**

**0600-2200**

Incident Objectives	1. Incident Name		2. Date Prepared	3. Time Prepared
		Smith Fire		August 15, 2021
4. Operational Period	August 16, 2021	0600-2200		
5. General Control Objectives for the Incident (include Alternatives)				
1	Firefighter and public safety through hazard recognition and application of the risk management process.			
2	Implement full suppression strategy on the Smith Creek Fire. Contain and mop-up 100% entire fire area. Apply tactics that offer the highest probability of success.			
3	Keep Boise Dispatch and local management informed and updated throuout the operational period.			
4				
5				
6				
7				
8				
6. Weather Forecast for Operational Period				<a href="#">NOAA Fire Wx Zones</a>
Slightly cooler and moister but with gusty ridgetop winds to 20 mph out of the southwest. Mostly sunny with no chance of precipitation.				
7. Safety				
Continued hot conditions may elevate risk of heat injuries. Steep terrain will pose a hazard for the duration of the incident.				
8. Attachments (check if attached)				
X 202	x 206	X 220		
X 203	X Safety Message	Map		
X 204	215 A			
X Comm	X 214			
ICS-202	9. Prepared by		10. Approved by (IC)	
	Ryan Shannahan PSC3		/s/ Ben Oakleaf	

ORGANIZATION ASSIGNMENT LIST				9. Operations Section	
1. Incident Name	Smith Fire			Chief	Josh Domingez
2. Date	August 16, 2021	3. Time	0600-2200	Deputy	
4. Operational Period	Day/Night Shift			<b>A. Branch I - Division/Groups</b>	
<b>5. Incident Commander and Staff</b>				Branch Director	
Incident Commander	Ben Oakleaf			Deputy	
Deputy				Division/Group	
Safety Officer	Guy Blom			Division/Group	
Information Officer				Division/Group	
Liaison Officer				Division/Group	
<b>6. Agency Representative</b>				Division/Group	
Agency	Name			<b>B. Branch II - Division/Groups</b>	
Lowman District Ranger	Traci Weaver			Branch Director	
				Deputy	
				Division/Group	
				Division/Group	
				Division/Group	
				Division/Group	
				Division/Group	
				Division/Group	
				<b>C. Branch III - Division/Groups</b>	
				Branch Director	
				Deputy	
				Division/Group	
<b>7. Planning Section</b>				Division/Group	
Chief	Ryan Shannahan			Division/Group	
Deputy				Division/Group	
Resource Unit				Division/Group	
Situation Unit				<b>D. Air Operations Branch</b>	
Documentation Unit				Air Operations Branch Director	
Demobilization Unit				Air Attack Supervisor	
Technical Specialists				Air Attack Supervisor	
Human Resources				Helicopter Coordinator	
Training				Air Tanker Coordinator	
Check-in	Amy Talley			Helicopter Manager - 64H	
				Helicopter Manager - 5LM	
				<b>10. Finance Section</b>	
				Chief	Dione Perkins
				Deputy	
				Time Unit	Amy Talley
<b>8. Logistics Section</b>				Procurement Unit	
Chief	Chris Hightower			Comp/Claims Unit	
Deputy				Cost Unit	
Supply Unit					
Facilities Unit				Prepared by (Planning Section Chief)	
Ground Support Unit				Ryan Shannahan	
Communications Unit					
Medical Unit					
Security Unit					
Food Unit					

<b>DIVISION ASSIGNMENT LIST</b>		1. IC Name		2. Division/Group		
				<i>Ben Oakleaf</i>		<b>Smith Creek Fire</b>
3. Incident Name		4. Operational Period				
<i>Smith Fire</i>		Date: <i>August 16, 2021</i>		Time: <i>0600-2200</i>		
<b>Garden Valley</b>						
Operations Chief		<i>Josh Domingez</i>		Division/Group Supervisor		<i>Josh Dominguez</i>
Safety Officer		<i>Guy Blom</i>		Air Attack Supervisor		
6. Resources Assigned this Period						
Strike Team/Task Force/Resource Designator	Leader	Number Persons	Trans. Needed	Reporting Location	Drop off Pt./Time	Pick Up PT./Time
<i>C-1 Lone Peak IHC</i>	<i>Berninger</i>	<i>23</i>	<i>No</i>	<i>Spike Camp</i>	<i>700</i>	<i>2000</i>
<i>C-7 Alta IHC</i>	<i>Trembly</i>	<i>23</i>	<i>No</i>	<i>Spike Camp</i>	<i>700</i>	<i>2000</i>
<i>C-3 BOF Crew 3</i>	<i>Wells</i>	<i>17</i>	<i>No</i>	<i>Deadwood ICP</i>	<i>700</i>	<i>2000</i>
<i>C-4 BOF Crew 5</i>	<i>Knight</i>	<i>19</i>	<i>No</i>	<i>Deadwood ICP</i>	<i>700</i>	<i>2000</i>
<i>SMJ</i>	<i>Odell</i>	<i>6</i>	<i>No</i>	<i>Deadwood ICP</i>	<i>700</i>	<i>2000</i>
7. Control Operations						
<b>Secure perimeter utilizing direct tactics and aerial support.</b>						
8. Special Instructions						
9. Division/Group Communication Summary						
Function	Channel	Frequency RX	Frequency TX	Tone	Assignment	Remarks
Command	<i>2</i>	<i>171.4500</i>	<i>164.1625</i>	<i>156.7</i>	<i>Command 1</i>	<i>Whitehawk Repeater</i>
Tactical	<i>13</i>	<i>168.7500</i>	<i>168.7500</i>		<i>Tac 1</i>	<i>BOF TAC 1</i>
Air/Ground	<i>8</i>	<i>167.9875</i>	<i>167.9875</i>		<i>A/G Primary</i>	<i>A/G 17</i>
EMS 2	<i>16</i>	<i>155.2800</i>	<i>155.2800</i>	<i>107.2</i>	<i>EMS</i>	<i>State Comm F2</i>
Prepared by <i>Ryan Shannahan PSC3</i>		Approved by <i>Ben Oakleaf</i>		Date <i>August 15, 2021</i>		Time <i>19:00</i>

<b>DIVISION ASSIGNMENT LIST</b>		1. IC Name		2. Division/Group		
				<i>Ben Oakleaf</i>		<b>IA Group</b>
3. Incident Name		4. Operational Period				
<i>Smith Fire</i>		Date: <i>August 16, 2021</i>		Time: <i>0600-2200</i>		
<b>Garden Valley</b>						
Operations Chief		<i>Josh Domingez</i>		Division/Group Supervisor		
Safety Officer		<i>Guy Blom</i>		Air Attack Supervisor		
<b>6. Resources Assigned this Period</b>						
Strike Team/Task Force/Resource Designator	Leader	Number Persons	Trans. Needed	Medical Responder/Eqpt.	Drop oFff Pt./Time	Pick Up PT./Time
<i>Kentucky Module</i>	<i>Ortiz</i>	<i>8</i>	<i>No</i>		<i>700</i>	<i>2000</i>
<b>7. Control Operations</b>						
<b>8. Special Instructions</b>						
<b>Stage at Deadwood Airstrip ICP.</b>						
<b>9. Division/Group Communication Summary</b>						
Function	Channel	Frequency RX	Frequency TX	Tone	Assignment	Remarks
Command	2	171.4500	164.1625	156.7	<i>Command 1</i>	<i>Whitehawk Repeater</i>
Command	13	168.7500	168.7500		<i>Tac 1</i>	<i>BOF TAC 1</i>
Tactical						
Air/Ground	8	167.9875	167.9875		<i>A/G Primary</i>	<i>A/G 17</i>
EMS 2	16	155.2800	155.2800	107.2	<i>EMS</i>	<i>State Comm F2</i>
Prepared by <i>Ryan Shannahan PSC3</i>		Approved by <i>Ben Oakleaf</i>		Date <i>August 15, 2021</i>		Time <i>19:00</i>

INCIDENT RADIO COMMUNICATIONS PLAN		Incident Name		Prepared Date / Time		Operational Period Date / Time	
		Smith Fire		August 15, 2021	19:00	August 16, 2021	0700-2100
4. Basic Radio Channel Utilization							
Function	CH.	Frequency/Tone		Assignment		Remarks	
COMMAND TAC	1	171.4500 RX CG	171.4500 TX CG	Command 1		BOF N Dir	
COMMAND	2	171.4500 RX CG	164.1625 TX 156.70 CG	Command 1		BOF N Rep	
	3	154.2950 RX CG	154.2950 TX CG	UNASSIGNED		Boise County Tac	
	4	172.2000 RX CG	165.4125 TX CG	UNASSIGNED		BOF S Rep	
	5	159.4500 RX CG	151.3100 TX CG	UNASSIGNED		SITPA Rep	
	6	159.2700 RX CG	159.2700 TX CG	UNASSIGNED		Direct 6	
A/G	7	151.1450 RX CG	151.1450 TX CG	UNASSIGNED		A/G IDL	
A/G	8	167.9875 RX CG	167.9875 TX CG	A/G Primary		A/G 17	
A/G	9	167.6500 RX CG	167.6500 TX CG	UNASSIGNED		A/G 45	
	10	155.1000 RX CG	158.8650 TX CG	UNASSIGNED		Crown Point (Gem)	
	11	168.7750 RX CG	164.9125 TX CG	UNASSIGNED		FS SOA Rep	
	12	168.7500 RX CG	168.7500 TX CG	UNASSIGNED		FS SOA Dir	
TAC	13	168.7500 RX CG	168.7500 TX CG	Tac 1		BOF TAC 1	
TAC	14	166.8875 RX CG	166.8875 TX CG	UNASSIGNED		R4 TAC 2	
AIRGUARD	15	168.6250 RX CG	168.6250 TX CG	AIRGUARD		Air Guard	
EMS	16	155.2800 RX CG	155.2800 TX CG	EMS		State Comm F2	
5. Prepared by Ryan Shannahan PSC3							

## AIR OPERATIONS SUMMARY (ICS 220)

<b>1. Incident Name:</b>		<b>2. Operational Period:</b> Date From: _____ Date To: _____ Time From: _____ Time To: _____				<b>3. Sunrise:</b> _____ <b>Sunset:</b> _____	
<b>4. Remarks</b> (safety notes, hazards, air operations special equipment, etc.):			<b>5. Ready Alert Aircraft:</b> Medivac: _____ New Incident: _____			<b>6. Temporary Flight Restriction Number:</b> Altitude: _____ Center Point: _____	
			<b>8. Frequencies:</b>		AM	FM	<b>9. Fixed-Wing</b> (category/kind/type, make/model, N#, base):
			Air/Air Fixed-Wing				
<b>7. Personnel:</b>	Name:	Phone Number:	Air/Air Rotary-Wing – Flight Following				
Air Operations Branch Director			Air/Ground				
Air Support Group Supervisor			Command			Other Fixed-Wing Aircraft:	
Air Tactical Group Supervisor			Deck Coordinator				
Helicopter Coordinator			Take-Off & Landing Coordinator				
Helibase Manager			Air Guard				
<b>10. Helicopters</b> (use additional sheets as necessary):							
FAA N#	Category/Kind/Type	Make/Model	Base	Available	Start	Remarks	
<b>11. Prepared by:</b> Name: _____ Position/Title: _____ Signature: _____							
<b>ICS 220, Page 1</b>			Date/Time: _____				

## Medical Plan (ICS 206)

<b>1. Incident Name:</b>				<b>2. Operational Period:</b>					
Smith Fire				August 16, 2021					
<b>3. Ambulance Services</b>							<b>Level of Care</b>		
<b>City</b>	<b>Address</b>			<b>Phone</b>					
Garden Valley Fire	373 S. Middle Fork Road Garden Valley, ID 83622			(208)462-3175			EMT		
<b>4. Air Ambulance Services</b>							<b>Travel Time H:MM</b>		
<b>City</b>	<b>Name</b>	<b>Phone</b>	<b>VHF</b>	<b>Patient Cap.</b>	<b>Hoist</b>				
<b>5. Hospitals</b>									
<b>Name &amp; Address</b>			<b>Lat/Long</b>		<b>Travel Time</b>		<b>Phone</b>	<b>Helipad</b>	
					<b>Air</b>	<b>Gnd</b>			
St. Alphonsus Regional			<b>Lat:</b>	43 36.8369'		0:30	3:00	(208) 367-2552	Y
Boise, ID	1055 N. Curtis Road		<b>Long:</b>	-116 15.3932'					
St. Luke's			<b>Lat:</b>	43 36.783'		0:30	3:00	(208) 381-2235	Y
Boise, ID	190 E. Bannock		<b>Long:</b>	-116 11.483					
University of Utah Salt Lake Burn Center			<b>Lat:</b>	40 46.346'		2:30	11:00	(801) 581-2700	Y
SLC, UT	50 N. Medical Dr.		<b>Long:</b>	-111 50.225					

Division / Group	EMS Responders and Capabilities	Equipment Available on Scene
	<b>Travel Route and Time</b>	
Division / Group	EMS Responders and Capabilities	Equipment Available on Scene
	<b>Travel Route and Time</b>	
Division / Group	EMS Responders and Capabilities	Equipment Available on Scene
	<b>Travel Route and Time</b>	

**Medical Emergency Procedures: Provide the following information to Boise Dispatch**

- 1) Declare the nature of emergency. Medical injury/illness? If injury/illness is it Life Threatening?
- 2) If Life Threatening then request the designated frequency be cleared for emergency traffic.
- 3) Identify the on-scene Point of Contact (POC) by Resource and Last name (i.e. POC is TFLD Smith).
- 4) Identify Nature of incident, number injured, patient assessment(s) and location (geographic and GPS coordinates).
- 5) Identify on-scene medical personnel by position and name (i.e. EMT Jones).
- 6) Identify preferred method of transport.
- 7) Request any additional resources and/or equipment needed.
- 8) Document all information received and transmitted on the radio or phone.
- 9) Identify any changes in the on-scene Point of Contact or Medical personnel as they occur.

<b>Prepared By:</b>	Ryan Shannahan	<b>Reviewed By:</b>	Ben Oakleaf
<b>Date:</b>	August 15, 2021	<b>Date:</b>	August 15, 2021



**Medical Incident Report**

**FOR A NON-EMERGENCY INCIDENT, WORK THROUGH CHAIN OF COMMAND TO REPORT AND TRANSPORT INJURED PERSONNEL AS NECESSARY.**

**FOR A MEDICAL EMERGENCY: IDENTIFY ON SCENE INCIDENT COMMANDER BY NAME AND POSITION AND ANNOUNCE "MEDICAL EMERGENCY" TO INITIATE RESPONSE FROM IMT COMMUNICATIONS/DISPATCH.**

**Use the following items to communicate situation to communications/dispatch.**

**1. CONTACT COMMUNICATIONS / DISPATCH** (Verify correct frequency prior to starting report)

*Ex: "Communications, Div. Alpha. Stand-by for Emergency Traffic."*

**2. INCIDENT STATUS:** Provide incident summary (including number of patients) and command structure.

*Ex: "Communications, I have a Red priority patient, unconscious, struck by a falling tree. Requesting air ambulance to Forest Road 1 at (Lat./Long.) This will be the Trout Meadow Medical, IC is TFLD Jones. EMT Smith is providing medical care."*

Severity of Emergency / Transport Priority	<input type="checkbox"/> <b>RED / PRIORITY 1 Life or limb threatening injury or illness. Evacuation need is IMMEDIATE</b> <i>Ex: Unconscious, difficulty breathing, bleeding severely, 2<sup>o</sup> - 3<sup>o</sup> burns more than 4 palm sizes, heat stroke, disoriented.</i> <input type="checkbox"/> <b>YELLOW / PRIORITY 2 Serious Injury or illness. Evacuation may be DELAYED if necessary.</b> <i>Ex: Significant trauma, unable to walk, 2<sup>o</sup> - 3<sup>o</sup> burns not more than 1-3 palm sizes.</i> <input type="checkbox"/> <b>GREEN / PRIORITY 3 Minor Injury or illness. Non-Emergency transport</b> <i>Ex: Sprains, strains, minor heat-related illness.</i>	
Nature of Injury or Illness & Mechanism of Injury		Brief Summary of Injury or Illness <i>(Ex: Unconscious, Struck by Falling Tree)</i>
Transport Request		Air Ambulance / Short Haul/Hoist Ground Ambulance / Other
Patient Location		Descriptive Location & Lat. / Long. (WGS84)
Incident Name		Geographic Name + "Medical" <i>(Ex: Trout Meadow Medical)</i>
On-Scene Incident Commander		Name of on-scene IC of Incident within an Incident <i>(Ex: TFLD Jones)</i>
Patient Care		Name of Care Provider <i>(Ex: EMT Smith)</i>

**3. INITIAL PATIENT ASSESSMENT:** Complete this section for each patient as applicable (start with the most severe patient)

Patient Assessment: See IRPG page 106

Treatment:

**4. TRANSPORT PLAN:**

Evacuation Location (if different): *(Descriptive Location (drop point, intersection, etc.) or Lat. / Long.)* Patient's ETA to Evacuation Location: \_\_\_\_\_

Helispot / Extraction Site Size and Hazards:

**5. ADDITIONAL RESOURCES / EQUIPMENT NEEDS:**

*Example: Paramedic/EMT, Crews, Immobilization Devices, AED, Oxygen, Trauma Bag, IV/Fluid(s), Splints, Rope rescue, Wheeled litter, HAZMAT, Extrication*

**6. COMMUNICATIONS: Identify State Air/Ground EMS Frequencies and Hospital Contacts as applicable**

Function	Channel Name/Number	Receive (RX)	Tone/NAC *	Transmit (TX)	Tone/NAC *
COMMAND					
AIR-TO-GROUND					
TACTICAL					

**7. CONTINGENCY: Considerations:** If primary options fail, what actions can be implemented in conjunction with primary evacuation method? Be thinking ahead...

**8. ADDITIONAL INFORMATION:** Updates/Changes, etc.

**REMEMBER:** Confirm ETA's of resources ordered. Act according to your level of training. Be Alert. Keep Calm. Think Clearly. Act Decisively.

<b>Health and Safety Message</b>	1. Incident Name	2. Date Prepared	3. Time Prepared
	Smith Fire	August 15, 2021	18:00
4. Operational Period	Date: August 16, 2021	Time:	0600-2200

**HEALTH AND SAFETY MESSAGE**

***SAFETY starts with YOU***

INCIDENT: SMITH	DATE: 8/15/-8/16-2021	TIME: 0600-2200
<b>Major Hazards and Risks:</b> <ul style="list-style-type: none"> <li><b>DRIVING HAZARDS: SLOW DOWN!</b> Watch for soft shoulders...Monitor radio...Call out mile markers...always use headlights...wear seat belts...avoid in-cab distractions like lose gear, maps and papers on the <u>dash board etc.</u>... hazards from public traffic...use care when pulling on and off of road...use flashers and light bars when helpful... Watch your speed.</li> <li><b>Steep Terrain-</b> concern for rapid fire spread, slow strenuous personnel <u>movement</u> and gravity hazards</li> <li><b>Mop-up:</b> Beware of ash-pits/burnt out stump holes and fire weakened trees...Maintain appropriate spacing when working...Keep 2 ½ tree lengths distance from falling operations... Watch-out where you take breaks...Wear all appropriate PPE.</li> </ul>		

Fire Order of the Day:

***Maintain prompt communications with your forces, your supervisor, and adjoining forces.***

<p>Fatigue is creeping in-- Head off fatigue related illness and injuries (heat related illness). Hydrate often, eat well and get as much rest as you can.</p> <p>Watch out 13: On a hill where rolling material can ignite fuel below you.</p> <p>Do not think you are communicating just because you are talking</p>	<p><b><u>Human Factors</u></b></p> <p><b>Situation Awareness (SA) and Decision Making</b></p> <ul style="list-style-type: none"> <li><b>Low experience level</b> Unfamiliar with area &amp; organization structure.</li> <li><b>Distraction from Primary duties</b> Collateral duties? Personal conflict. Incident within the incident?</li> <li><b>Fatigue</b> Excessive shifts. Lack of sleep, and rest.</li> </ul> <p><b>Stress Reactions:</b> Target fixation.....locking into a course of action Repetitive behaviors.....working in your comfort zone Focusing on small tasks.....ignoring big picture Accepting increased risk as completion of task nears.</p> <p><b>Recognize what your SA is telling you...If any of these conflict with your perception...Review the "RISK MANAGEMENT PROCESS".....to ensure reality is accurate and valid for the task or action at hand.....</b></p>
--	---

**SOFR- Guy Blom**

Prepared By:	Guy Blom	Reviewed By:	Ben Oakleaf
Date:	August 15, 2021	Date:	August 15, 2021

FNUS55 KBOI 152114  
FWFBOI

Fire Weather Planning Forecast for SW Idaho and SE Oregon  
National Weather Service Boise ID  
314 PM MDT Sun Aug 15 2021

...COOLER TEMPERATURES AND INCREASING WINDS WITH A CHANCE OF THUNDERSTORMS...

.DISCUSSION...

An upper trough and associated cold front will usher in cooler air and bring increased winds to the area Monday and Tuesday. The strongest winds are expected Tuesday with a secondary push of cooler air. The best chance for thunderstorms and wetting rains will be mid-week across the Payette and Boise National Forests as the center of the trough moves overhead. A chance of showers and thunderstorms will linger the second half of the week across the Payette and Boise National Forests under northwest flow aloft.

IDZ403-161545-  
Northern Boise National Forest-  
314 PM MDT Sun Aug 15 2021

.TONIGHT...

Sky/weather.....Mostly clear.  
Min temperature.....52 to 66.  
24 hr trend.....On average, 2  
degrees warmer.  
Max humidity.....34 to 54 percent.  
24 hr trend.....On average, 2  
percent wetter.  
20-foot winds.....  
Valleys/lwr slopes...Light  
downslope winds less than 8 mph.  
Ridges/upr slopes....Northwest  
around 8 mph in the evening,  
becoming light  
after midnight.  
Haines Index.....4 low.  
LAL.....1.  
CWR /0.10 inch/.....0 percent.  
Smoke Dispersal:  
Mixing Height.....200-300 ft AGL.  
Transport Winds....Southeast up to 10  
mph.

.MONDAY...

Sky/weather.....Mostly sunny.  
Max temperature.....77 to 91.  
24 hr trend.....On average, 2  
degrees cooler.  
Min humidity.....20 to 25 percent.  
24 hr trend.....On average, 6  
percent wetter.  
20-foot winds.....  
Valleys/lwr slopes...Light upslope  
winds less than 8 mph in the  
morning,  
becoming southwest 8 to 11 mph in  
the afternoon.  
Ridges/upr slopes....Light winds  
less than 8 mph in the

morning,  
becoming southwest 8 to 12 mph  
with gusts to  
20 mph in the afternoon.  
Haines Index.....4 low.  
LAL.....1.  
CWR /0.10 inch/.....0 percent.  
Smoke Dispersal:  
Mixing Height.....8000-10000 ft AGL.  
Transport Winds....Southwest 15 to 25  
mph.

.MONDAY NIGHT...

Sky/weather.....Mostly clear.  
Min temperature.....50 to 63.  
24 hr trend.....On average, 3  
degrees cooler.  
Max humidity.....43 to 63 percent.  
24 hr trend.....On average, 7  
percent wetter.  
20-foot winds.....  
Valleys/lwr slopes...West 8 to 11  
mph with gusts to 18 mph in  
the evening,  
becoming light downslope less  
than 8 mph  
after midnight.  
Ridges/upr slopes....West 8 to 13  
mph with gusts to 20 mph in  
the evening,  
becoming light after  
midnight.  
Haines Index.....4 low.  
LAL.....1.  
CWR /0.10 inch/.....0 percent.  
Smoke Dispersal:  
Mixing Height.....200-300 ft AGL.  
Transport Winds....West up to 10 mph.

UNIT LOG		1. Incident Name	2. Date Prepared	3. Time Prepared
		Smith Fire		
4. Unit Name (Designators)		5. Unit Leader (Name and Position)	6. Operational Period	
			August 16, 2021	0600-2200
7. Personnel Roster Assigned				
Name		ICS Position	Home Base	
8. Activity Log				
Time		Major Events		
9. Prepared by (Name and Position)				