

Smith Fire

FS: P4N8C9 (0402) BLM:
ID-BOF-000895

Incident Commander

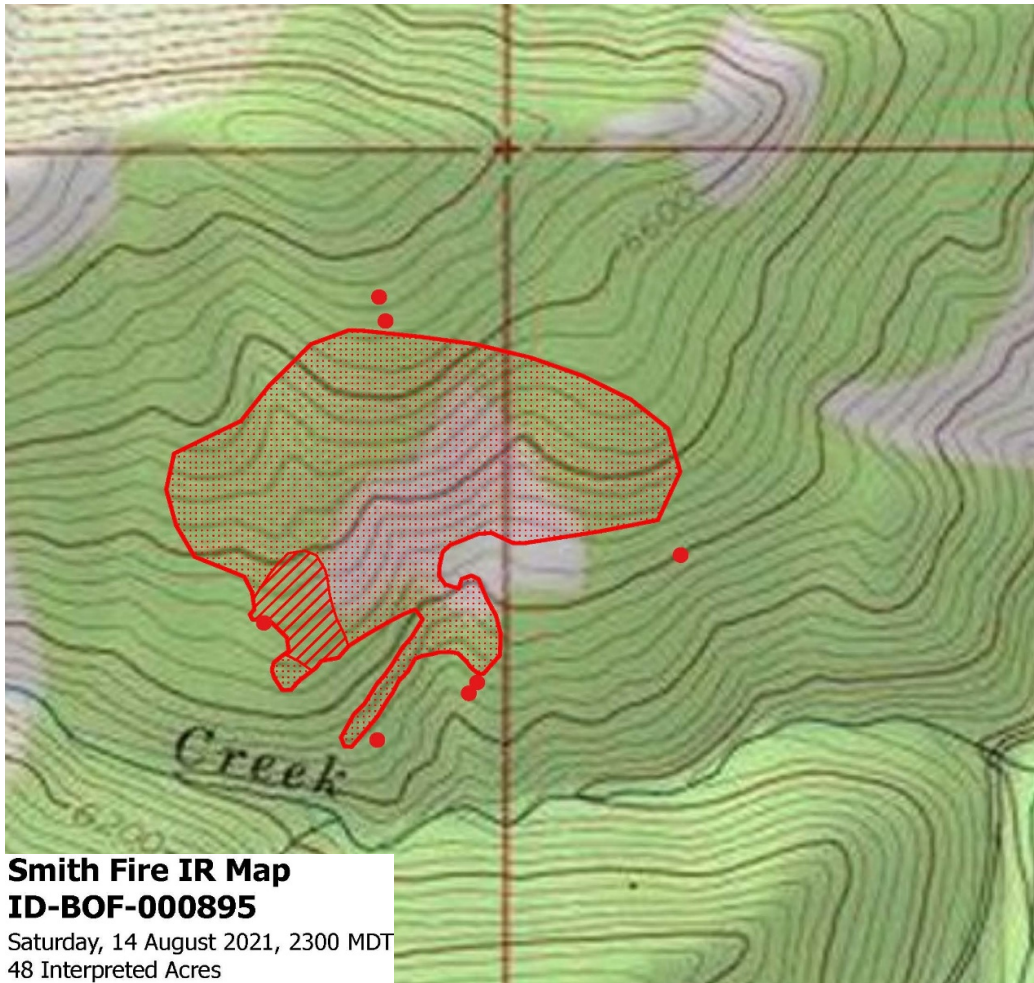
Ben Oakleaf

Operations

Josh Domingez

Safety

Guy Blom



Operational Period

Day/Night Shift

August 17, 2021

0600-2200

Incident Objectives	1. Incident Name		2. Date Prepared	3. Time Prepared
		Smith Fire		August 16, 2021
4. Operational Period	August 17, 2021	0600-2200		
5. General Control Objectives for the Incident (include Alternatives)				
1	Firefighter and public safety through hazard recognition and application of the risk management process.			
2	Implement full suppression strategy on the Smith Creek Fire. Contain and mop-up 100% entire fire area. Apply tactics that offer the highest probability of success.			
3	Keep Boise Dispatch and local management informed and updated throuout the operational period.			
4				
5				
6				
7				
8				
6. Weather Forecast for Operational Period				NOAA Fire Wx Zones
Significantly cooler with increased humidity. A cold front passage Tuesday will bring gusty winds. Isolated thunderstorms will be possible.				
7. Safety				
Steep terrain will pose a hazard for the duration of the incident.				
8. Attachments (check if attached)				
X 202	x 206	X 220		
X 203	X Safety Message	Map		
X 204	215 A			
X Comm	X 214			
ICS-202	9. Prepared by		10. Approved by (IC)	
	Ryan Shannahan PSC3		/s/ Ben Oakleaf	

ORGANIZATION ASSIGNMENT LIST				9. Operations Section	
1. Incident Name	Smith Fire			Chief	Josh Domingez
2. Date	August 17, 2021	3. Time	0600-2200	Deputy	
4. Operational Period	Day/Night Shift			A. Branch I - Division/Groups	
5. Incident Commander and Staff				Branch Director	
Incident Commander	Ben Oakleaf			Deputy	
Deputy				Division/Group	
Safety Officer	Guy Blom			Division/Group	
Information Officer				Division/Group	
Liaison Officer				Division/Group	
6. Agency Representative				Division/Group	
Agency	Name			B. Branch II - Division/Groups	
Lowman District Ranger	Traci Weaver			Branch Director	
				Deputy	
				Division/Group	
				Division/Group	
				Division/Group	
				Division/Group	
				Division/Group	
				C. Branch III - Division/Groups	
				Branch Director	
				Deputy	
				Division/Group	
7. Planning Section				Division/Group	
Chief	Ryan Shannahan			Division/Group	
Deputy				Division/Group	
Resource Unit				Division/Group	
Situation Unit				D. Air Operations Branch	
Documentation Unit				Air Operations Branch Director	
Demobilization Unit				Air Attack Supervisor	
Technical Specialists				Air Attack Supervisor	
Human Resources				Helicopter Coordinator	
Training				Air Tanker Coordinator	
Check-in	Amy Talley			Helicopter Manager - 64H	
				Helicopter Manager - 5LM	
				10. Finance Section	
				Chief	Dione Perkins
				Deputy	
				Time Unit	Amy Talley
8. Logistics Section				Procurement Unit	
Chief	Chris Hightower			Comp/Claims Unit	
Deputy				Cost Unit	
Supply Unit					
Facilities Unit				Prepared by (Planning Section Chief)	
Ground Support Unit				Ryan Shannahan	
Communications Unit					
Medical Unit					
Security Unit					
Food Unit					

DIVISION ASSIGNMENT LIST		1. IC Name		2. Division/Group		
				<i>Ben Oakleaf</i>		Smith Creek Fire
3. Incident Name		4. Operational Period				
<i>Smith Fire</i>		Date: <i>August 17, 2021</i>		Time: <i>0600-2200</i>		
Garden Valley						
Operations Chief		<i>Josh Domingez</i>		Division/Group Supervisor		<i>Josh Dominguez</i>
Safety Officer		<i>Guy Blom</i>		Air Attack Supervisor		
6. Resources Assigned this Period						
Strike Team/Task Force/Resource Designator	Leader	Number Persons	Trans. Needed	Reporting Location	Drop off Pt./Time	Pick Up PT./Time
<i>C-1 Lone Peak IHC</i>	<i>Berninger</i>	<i>23</i>	<i>No</i>	<i>Spike Camp</i>	<i>700</i>	<i>2000</i>
<i>C-7 Alta IHC</i>	<i>Trembly</i>	<i>23</i>	<i>No</i>	<i>Spike Camp</i>	<i>700</i>	<i>2000</i>
<i>C-3 BOF Crew 3</i>	<i>Wells</i>	<i>17</i>	<i>No</i>	<i>Deadwood ICP</i>	<i>700</i>	<i>2000</i>
<i>C-4 BOF Crew 5</i>	<i>Knight</i>	<i>19</i>	<i>No</i>	<i>Deadwood ICP</i>	<i>700</i>	<i>2000</i>
<i>SMJ</i>	<i>Odell</i>	<i>6</i>	<i>No</i>	<i>Deadwood ICP</i>	<i>700</i>	<i>2000</i>
7. Control Operations						
Secure perimeter utilizing direct tactics and aerial support.						
8. Special Instructions						
9. Division/Group Communication Summary						
Function	Channel	Frequency RX	Frequency TX	Tone	Assignment	Remarks
Command	<i>2</i>	<i>171.4500</i>	<i>164.1625</i>	<i>156.7</i>	<i>Command 1</i>	<i>Whitehawk Repeater</i>
Tactical	<i>13</i>	<i>168.7500</i>	<i>168.7500</i>		<i>Tac 1</i>	<i>BOF TAC 1</i>
Air/Ground	<i>8</i>	<i>167.9875</i>	<i>167.9875</i>		<i>A/G Primary</i>	<i>A/G 17</i>
EMS 2	<i>16</i>	<i>155.2800</i>	<i>155.2800</i>	<i>107.2</i>	<i>EMS</i>	<i>State Comm F2</i>
Prepared by <i>Ryan Shannahan PSC3</i>		Approved by <i>Ben Oakleaf</i>		Date <i>August 16, 2021</i>		Time <i>19:00</i>

INCIDENT RADIO COMMUNICATIONS PLAN	Incident Name	Prepared Date / Time		Operational Period Date / Time	
	Smith Fire	August 16, 2021	19:00	August 17, 2021	0700-2100

4. Basic Radio Channel Utilization

Function	CH.	Frequency/Tone		Assignment	Remarks
COMMAND TAC	1	171.4500 RX CG	171.4500 TX CG	Command 1	BOF N Dir
COMMAND	2	171.4500 RX CG	164.1625 TX 156.70 CG	Command 1	BOF N Rep
	3	154.2950 RX CG	154.2950 TX CG	UNASSIGNED	Boise County Tac
	4	172.2000 RX CG	165.4125 TX CG	UNASSIGNED	BOF S Rep
	5	159.4500 RX CG	151.3100 TX CG	UNASSIGNED	SITPA Rep
	6	159.2700 RX CG	159.2700 TX CG	UNASSIGNED	Direct 6
A/G	7	151.1450 RX CG	151.1450 TX CG	UNASSIGNED	A/G IDL
A/G	8	167.9875 RX CG	167.9875 TX CG	A/G Primary	A/G 17
A/G	9	167.6500 RX CG	167.6500 TX CG	UNASSIGNED	A/G 45
	10	155.1000 RX CG	158.8650 TX CG	UNASSIGNED	Crown Point (Gem)
	11	168.7750 RX CG	164.9125 TX CG	UNASSIGNED	FS SOA Rep
	12	168.7500 RX CG	168.7500 TX CG	UNASSIGNED	FS SOA Dir
TAC	13	168.7500 RX CG	168.7500 TX CG	Tac 1	BOF TAC 1
TAC	14	166.8875 RX CG	166.8875 TX CG	UNASSIGNED	R4 TAC 2
AIRGUARD	15	168.6250 RX CG	168.6250 TX CG	AIRGUARD	Air Guard
EMS	16	155.2800 RX CG	155.2800 TX CG	EMS	State Comm F2

5. Prepared by
Ryan Shannahan PSC3

AIR OPERATIONS SUMMARY (ICS 220)

1. Incident Name:		2. Operational Period: Date From: _____ Date To: _____ Time From: _____ Time To: _____				3. Sunrise: _____ Sunset: _____	
4. Remarks (safety notes, hazards, air operations special equipment, etc.):			5. Ready Alert Aircraft: Medivac: _____ New Incident: _____			6. Temporary Flight Restriction Number: Altitude: _____ Center Point: _____	
			8. Frequencies:		AM	FM	9. Fixed-Wing (category/kind/type, make/model, N#, base):
			Air/Air Fixed-Wing				
7. Personnel:	Name:	Phone Number:	Air/Air Rotary-Wing – Flight Following				
Air Operations Branch Director			Air/Ground				
Air Support Group Supervisor			Command			Other Fixed-Wing Aircraft:	
Air Tactical Group Supervisor			Deck Coordinator				
Helicopter Coordinator			Take-Off & Landing Coordinator				
Helibase Manager			Air Guard				
10. Helicopters (use additional sheets as necessary):							
FAA N#	Category/Kind/Type	Make/Model	Base	Available	Start	Remarks	
11. Prepared by: Name: _____ Position/Title: _____ Signature: _____							
ICS 220, Page 1			Date/Time: _____				

Medical Plan (ICS 206)

1. Incident Name:				2. Operational Period:					
Smith Fire				August 17, 2021					
3. Ambulance Services							Level of Care		
City	Address			Phone					
Garden Valley Fire	373 S. Middle Fork Road Garden Valley, ID 83622			(208)462-3175			EMT		
4. Air Ambulance Services							Travel Time H:MM		
City	Name	Phone	VHF	Patient Cap.	Hoist				
5. Hospitals									
Name & Address			Lat/Long		Travel Time		Phone	Helipad	
					Air	Gnd			
St. Alphonsus Regional			Lat:	43 36.8369'		0:30	3:00	(208) 367-2552	Y
Boise, ID	1055 N. Curtis Road		Long:	-116 15.3932'					
St. Luke's			Lat:	43 36.783'		0:30	3:00	(208) 381-2235	Y
Boise, ID	190 E. Bannock		Long:	-116 11.483					
University of Utah Salt Lake Burn Center			Lat:	40 46.346'		2:30	11:00	(801) 581-2700	Y
SLC, UT	50 N. Medical Dr.		Long:	-111 50.225					

Division / Group	EMS Responders and Capabilities	Equipment Available on Scene
	17 EMTs between 4 cres on fire	
	Travel Route and Time	
	On Fire	

Medical Emergency Procedures: Provide the following information to Boise Dispatch			
<p>1) Declare the nature of emergency. Medical injury/illness? If injury/illness is it Life Threatening?</p> <p>2) If Life Threatening then request the designated frequency be cleared for emergency traffic.</p> <p>3) Identify the on-scene Point of Contact (POC) by Resource and Last name (i.e. POC is TFLD Smith).</p> <p>4) Identify Nature of incident, number injured, patient assessment(s) and location (geographic and GPS coordinates).</p> <p>5) Identify on-scene medical personnel by position and name (i.e. EMT Jones).</p> <p>6) Identify preferred method of transport.</p> <p>7) Request any additional resources and/or equipment needed.</p> <p>8) Document all information received and transmitted on the radio or phone.</p> <p>9) Identify any changes in the on-scene Point of Contact or Medical personnel as they occur.</p>			
Prepared By:	Ryan Shannahan	Reviewed By:	Ben Oakleaf
Date:	August 16, 2021	Date:	August 16, 2021

Medical Incident Report

FOR A NON-EMERGENCY INCIDENT, WORK THROUGH CHAIN OF COMMAND TO REPORT AND TRANSPORT INJURED PERSONNEL AS NECESSARY.

FOR A MEDICAL EMERGENCY: IDENTIFY ON SCENE INCIDENT COMMANDER BY NAME AND POSITION AND ANNOUNCE "MEDICAL EMERGENCY" TO INITIATE RESPONSE FROM IMT COMMUNICATIONS/DISPATCH.

Use the following items to communicate situation to communications/dispatch.

1. CONTACT COMMUNICATIONS / DISPATCH (Verify correct frequency prior to starting report)

Ex: "Communications, Div. Alpha. Stand-by for Emergency Traffic."

2. INCIDENT STATUS: Provide incident summary (including number of patients) and command structure.

Ex: "Communications, I have a Red priority patient, unconscious, struck by a falling tree. Requesting air ambulance to Forest Road 1 at (Lat./Long.) This will be the Trout Meadow Medical, IC is TFLD Jones. EMT Smith is providing medical care."

Severity of Emergency / Transport Priority	<input type="checkbox"/> RED / PRIORITY 1 Life or limb threatening injury or illness. Evacuation need is IMMEDIATE <i>Ex: Unconscious, difficulty breathing, bleeding severely, 2^o - 3^o burns more than 4 palm sizes, heat stroke, disoriented.</i> <input type="checkbox"/> YELLOW / PRIORITY 2 Serious Injury or illness. Evacuation may be DELAYED if necessary. <i>Ex: Significant trauma, unable to walk, 2^o - 3^o burns not more than 1-3 palm sizes.</i> <input type="checkbox"/> GREEN / PRIORITY 3 Minor Injury or illness. Non-Emergency transport <i>Ex: Sprains, strains, minor heat-related illness.</i>	
Nature of Injury or Illness & Mechanism of Injury		Brief Summary of Injury or Illness <i>(Ex: Unconscious, Struck by Falling Tree)</i>
Transport Request		Air Ambulance / Short Haul/Hoist Ground Ambulance / Other
Patient Location		Descriptive Location & Lat. / Long. (WGS84)
Incident Name		Geographic Name + "Medical" <i>(Ex: Trout Meadow Medical)</i>
On-Scene Incident Commander		Name of on-scene IC of Incident within an Incident <i>(Ex: TFLD Jones)</i>
Patient Care		Name of Care Provider <i>(Ex: EMT Smith)</i>

3. INITIAL PATIENT ASSESSMENT: Complete this section for each patient as applicable (start with the most severe patient)

Patient Assessment: See IRPG page 106

Treatment:

4. TRANSPORT PLAN:

Evacuation Location (if different): *(Descriptive Location (drop point, intersection, etc.) or Lat. / Long.)* Patient's ETA to Evacuation Location: _____

Helispot / Extraction Site Size and Hazards:

5. ADDITIONAL RESOURCES / EQUIPMENT NEEDS:

Example: Paramedic/EMT, Crews, Immobilization Devices, AED, Oxygen, Trauma Bag, IV/Fluid(s), Splints, Rope rescue, Wheeled litter, HAZMAT, Extrication

6. COMMUNICATIONS: Identify State Air/Ground EMS Frequencies and Hospital Contacts as applicable

Function	Channel Name/Number	Receive (RX)	Tone/NAC *	Transmit (TX)	Tone/NAC *
COMMAND					
AIR-TO-GROUND					
TACTICAL					

7. CONTINGENCY: Considerations: If primary options fail, what actions can be implemented in conjunction with primary evacuation method? Be thinking ahead...

8. ADDITIONAL INFORMATION: Updates/Changes, etc.

REMEMBER: Confirm ETA's of resources ordered. Act according to your level of training. Be Alert. Keep Calm. Think Clearly. Act Decisively.

Health and Safety Message	1. Incident Name	2. Date Prepared	3. Time Prepared
	Smith Fire	August 16, 2021	18:00
4. Operational Period	Date: August 17, 2021	Time:	0600-2200

HEALTH AND SAFETY MESSAGE

SAFETY starts with YOU

INCIDENT: SMITH	DATE: 8/15/-8/16-2021	TIME: 0600-2200
Major Hazards and Risks: <ul style="list-style-type: none"> DRIVING HAZARDS: SLOW DOWN! Watch for soft shoulders...Monitor radio...Call out mile markers...always use headlights...wear seat belts...avoid in-cab distractions like lose gear, maps and papers on the <u>dash board etc.</u>... hazards from public traffic...use care when pulling on and off of road...use flashers and light bars when helpful... Watch your speed. Steep Terrain- concern for rapid fire spread, slow strenuous personnel <u>movement</u> and gravity hazards Mop-up: Beware of ash-pits/burnt out stump holes and fire weakened trees...Maintain appropriate spacing when working...Keep 2 ½ tree lengths distance from falling operations... Watch-out where you take breaks...Wear all appropriate PPE. 		

Fire Order of the Day:

Maintain prompt communications with your forces, your supervisor, and adjoining forces.

<p>Fatigue is creeping in-- Head off fatigue related illness and injuries (heat related illness). Hydrate often, eat well and get as much rest as you can.</p> <p>Watch out 13: On a hill where rolling material can ignite fuel below you.</p> <p>Do not think you are communicating just because you are talking</p>	<p><u>Human Factors</u></p> <p>Situation Awareness (SA) and Decision Making</p> <ul style="list-style-type: none"> Low experience level Unfamiliar with area & organization structure. Distraction from Primary duties Collateral duties? Personal conflict. Incident within the incident? Fatigue Excessive shifts. Lack of sleep, and rest. <p>Stress Reactions: Target fixation.....locking into a course of action Repetitive behaviors.....working in your comfort zone Focusing on small tasks.....ignoring big picture Accepting increased risk as completion of task nears.</p> <p>Recognize what your SA is telling you...If any of these conflict with your perception...Review the "RISK MANAGEMENT PROCESS".....to ensure reality is accurate and valid for the task or action at hand.....</p>
--	---

SOFR- Guy Blom

Prepared By:	Guy Blom	Reviewed By:	Ben Oakleaf
Date:	August 16, 2021	Date:	August 16, 2021

Fire Weather Planning Forecast for SW Idaho and SE Oregon
National Weather Service Boise ID
247 PM MDT Mon Aug 16 2021

...ISOLATED THUNDERSTORMS SOUTHEAST THIS AFTERNOON AND THIS EVENING...

...INCREASED WINDS THROUGH WEDNESDAY AND COLD FRONT TUESDAY...

.DISCUSSION...

We are seeing isolated storms develop this afternoon in the eastern NF districts, and expect more development over southern Vale BLM and south and east of Mountain Home later this afternoon and this evening. Storms could produce wind gusts to 60 mph late this afternoon into early this evening. A cold front will come through in two pieces, one tonight and one early Tuesday, bringing gusty winds to most areas. Isolated storms will be possible again Tuesday in most of the Idaho districts. Temps will cool considerably Tuesday and even more Wednesday, and remain below normal through next Monday. Sustained winds over 20 mph are likely Tuesday over much of Vale and Burns BLM, and from the Baker Valley south and east through the Treasure Valley and into the Western Twin Falls BLM. Relative humidity values will be high enough so that red flag criteria will not be met.

IDZ403-171545-
Northern Boise National Forest-
247 PM MDT Mon Aug 16 2021

TUESDAY...

Sky/weather.....Partly sunny with a 30 percent chance of showers and thunderstorms in the afternoon. Thunderstorms may produce gusty winds in the afternoon.
Max temperature.....63 to 76.

24 hr trend.....On average, 16 degrees cooler.

Min humidity.....27 to 34 percent.

24 hr trend.....On average, 11 percent wetter.

20-foot winds.....

Valleys/lwr slopes...Light upslope winds less than 8 mph in the morning, becoming southwest 8 to 10 mph with gusts to 18 mph in the afternoon.

Ridges/upr slopes....Light winds less than 8 mph in the morning, becoming southwest 8 to 11 mph with gusts to 18 mph in the afternoon.

Haines Index.....3 very low.

LAL.....1.

CWR /0.10 inch/.....10 percent.

Smoke Dispersion:

Mixing Height.....6500-8000 ft AGL.

Transport Winds....West 15 to 25 mph.

.TUESDAY NIGHT...

Sky/weather.....Mostly cloudy with a chance of rain showers. A chance of thunderstorms in the evening. Thunderstorms may produce gusty winds in the evening.

Chance of precipitation 30 percent.

Min temperature.....38 to 50.

24 hr trend.....On average, 14 degrees cooler.

Max humidity.....63 to 87 percent.

24 hr trend.....On average, 25 percent wetter.

20-foot winds.....

Valleys/lwr slopes...Northwest around 9 mph with gusts to 16 mph.

Ridges/upr slopes....Northwest 8 to 12 mph.

Haines Index.....3 very low.

LAL.....2 in the evening,

decreasing to 1 after midnight.

CWR /0.10 inch/.....20 percent.

Smoke Dispersion:

Mixing Height.....600-1000 ft AGL.

Transport Winds....North 10 to 15 mph.

.WEDNESDAY...

Sky/weather.....Partly sunny. A chance of rain showers in the morning, then rain showers likely and a chance of thunderstorms in the afternoon. Chance of precipitation 60 percent.

Max temperature.....51 to 66.

24 hr trend.....On average, 11 degrees cooler.

Min humidity.....35 to 49 percent.

24 hr trend.....On average, 11 percent wetter.

20-foot winds.....

Valleys/lwr slopes...Northwest around 8 mph in the morning, becoming light upslope less than 8 mph in the afternoon.

Ridges/upr slopes....North 8 to 9 mph in the morning, becoming light in the afternoon.

Haines Index.....3 very low.

LAL.....1 in the morning,

increasing to 2 in the afternoon.

CWR /0.10 inch/.....20 percent.

Smoke Dispersion:

Mixing Height.....5500-7500 ft AGL.

Transport Winds....North around 10 mph.

