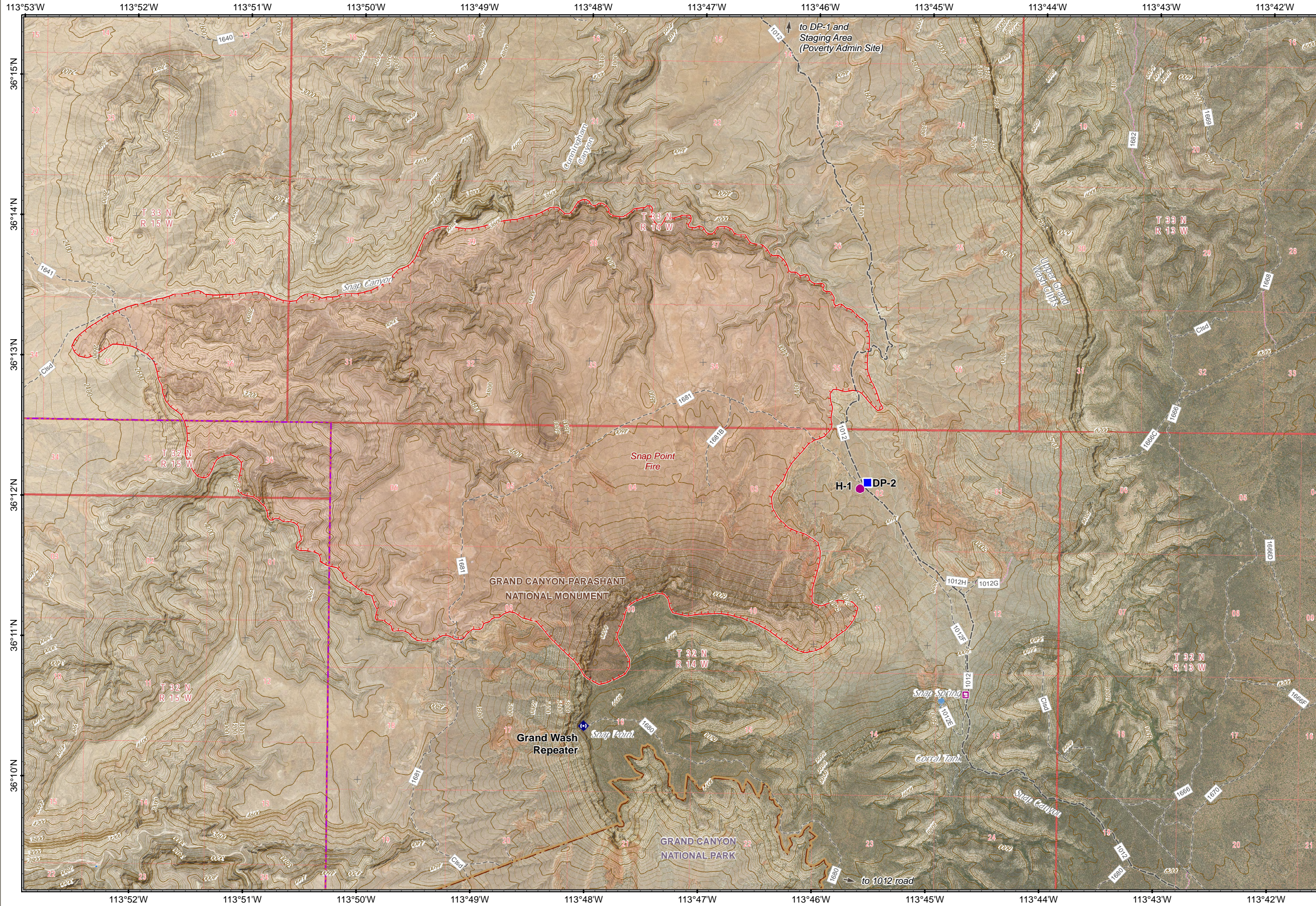
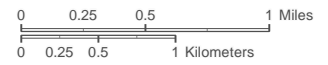


Operations Map - Aerial Imagery
Snap Point Fire AZ-ASD-000447 | July 12, 2021
 9,857 acres on July 11 at 1000 hr



- Fire Perimeter
- Fire Line**
- - - Fire Edge
- Ranch/Cabin/Other Structure
- Arizona Strip Routes**
- Secondary Road Unpaved
- - - Tertiary Road Unpaved
- Single Track
- Reclaiming
- PLSS Township
- PLSS Section
- BLM National Monument
- NPS - BLM Boundary



Map Produced by BLM Arizona Strip District
 File: Ops_Aerial_11x17_Land_SnapPoint_Cunningham_AZASD000447_4
 Coordinate System: NAD 1983 UTM Zone 12N
 Reference System: U.S. PLSS GSR&M
 Scale: 1:49,000 at 8.5x11 page output
 Date: 7/11/2021



No warranty is made by the Bureau of Land Management (BLM) regarding the accuracy or completeness of this map. This map is representational and is to be used as intended by the BLM. Map data compiled from various sources. This map and the data from which it was derived are not binding on the BLM and may be revised at any time.