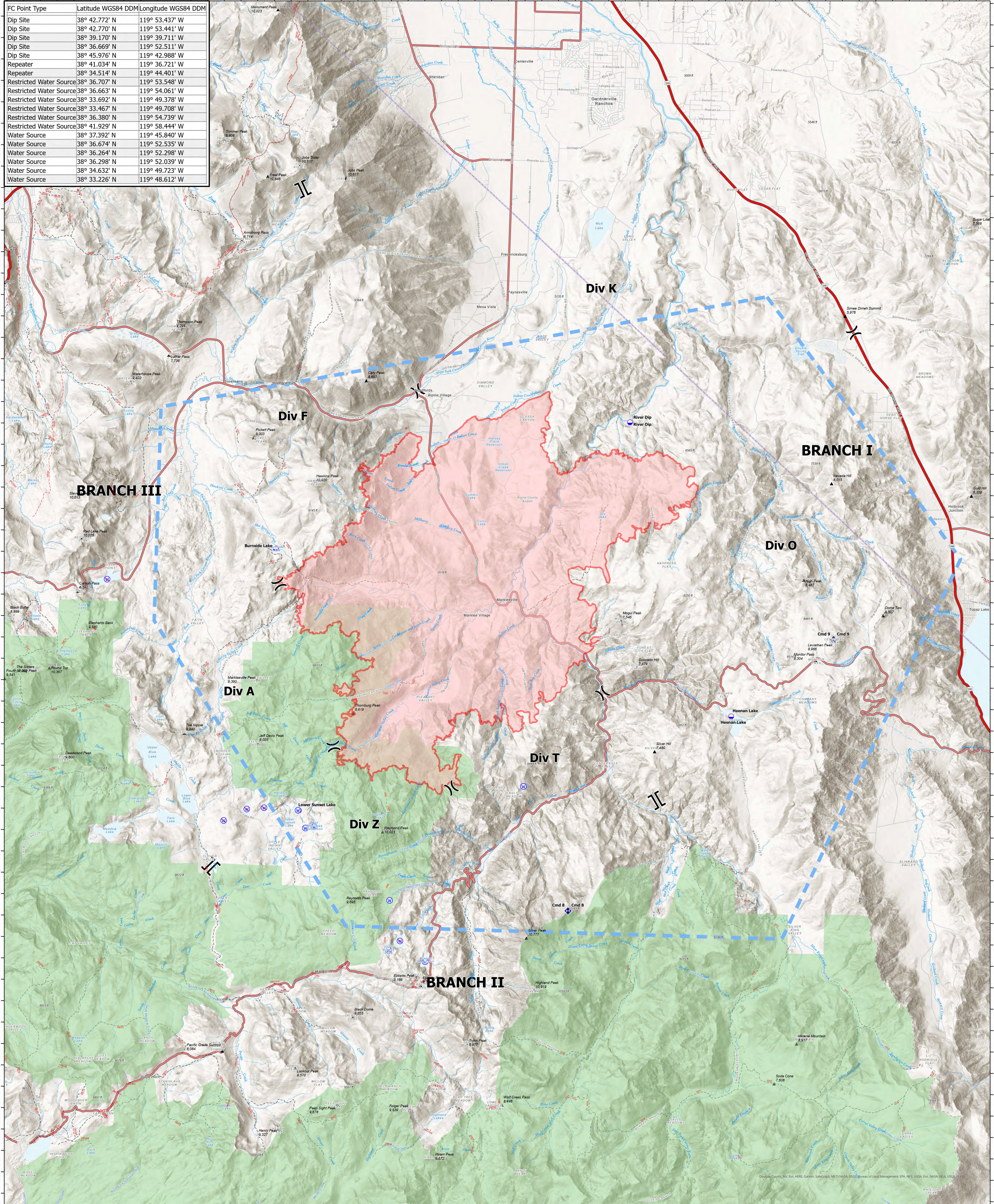


FC Point Type	Latitude WGS84 DDM	Longitude WGS84 DDM
Dip Site	38° 42.772' N	119° 53.437' W
Dip Site	38° 42.770' N	119° 53.441' W
Dip Site	38° 39.170' N	119° 39.711' W
Dip Site	38° 36.669' N	119° 52.511' W
Dip Site	38° 45.976' N	119° 42.988' W
Repeater	38° 41.034' N	119° 36.721' W
Repeater	38° 34.514' N	119° 44.401' W
Restricted Water Source	38° 36.707' N	119° 53.548' W
Restricted Water Source	38° 36.663' N	119° 54.061' W
Restricted Water Source	38° 33.692' N	119° 49.378' W
Restricted Water Source	38° 33.467' N	119° 49.708' W
Restricted Water Source	38° 36.380' N	119° 54.739' W
Restricted Water Source	38° 41.929' N	119° 58.444' W
Water Source	38° 37.392' N	119° 45.840' W
Water Source	38° 36.674' N	119° 52.535' W
Water Source	38° 36.264' N	119° 52.298' W
Water Source	38° 36.298' N	119° 52.039' W
Water Source	38° 34.632' N	119° 49.723' W
Water Source	38° 33.226' N	119° 48.612' W



**Air Operations**  
 Tamarack  
 NV-HTF 0030419  
 7/21/2021  
 39,045 acres  
 as of 7/19/2021, 2030 Hrs



- Dip Site
- X Division Break
- || Branch Break
- ◆ Repeater
- ⊙ Water Source
- Restricted Water Source
- Wildfire Daily Fire Perimeter
- Wilderness
- US Route
- State Route
- Stream/River
- Intermittent Stream/River
- 20210720\_Tamarack\_1\_2537

