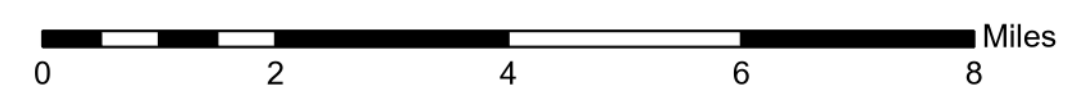
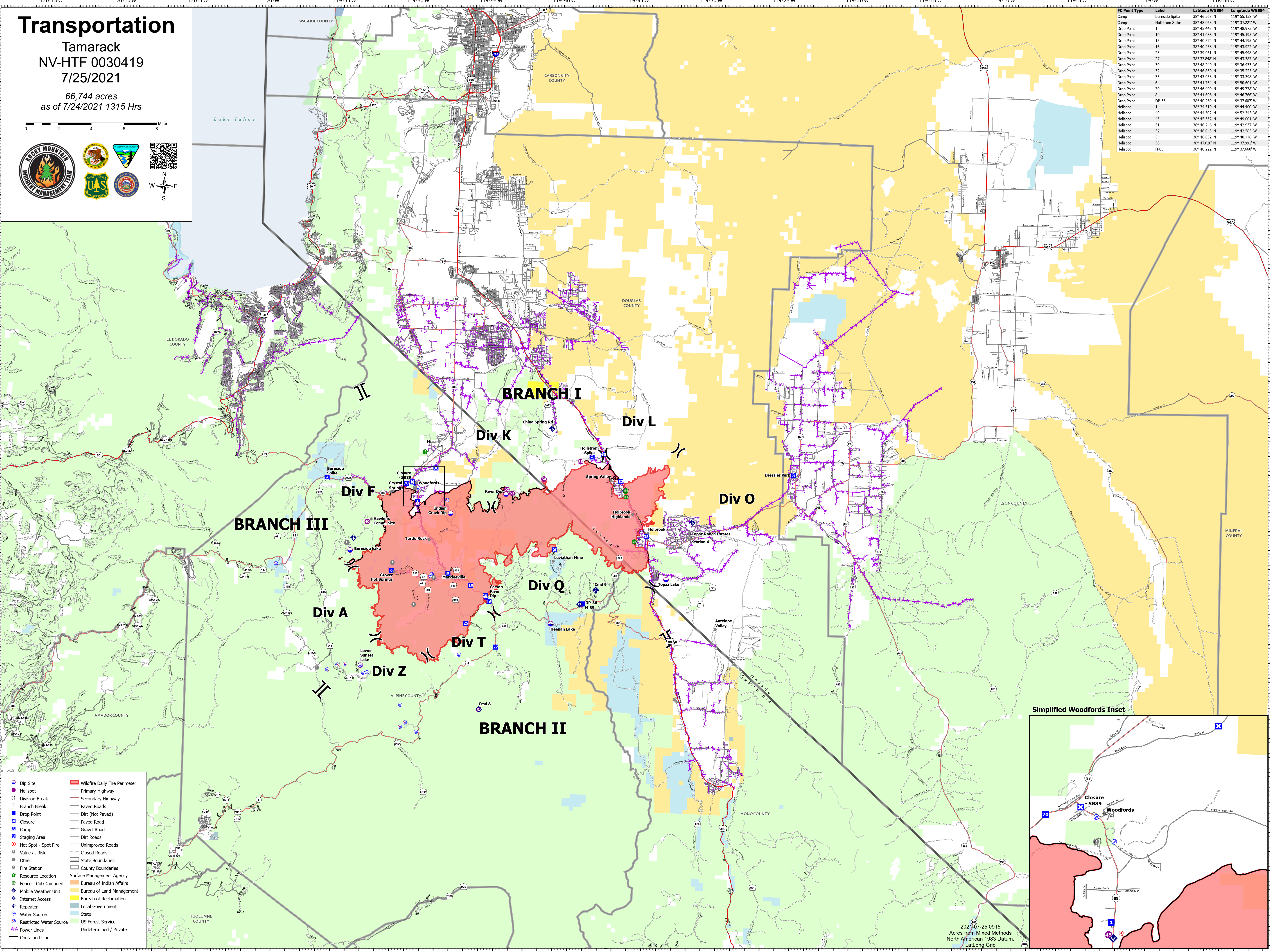


# Transportation

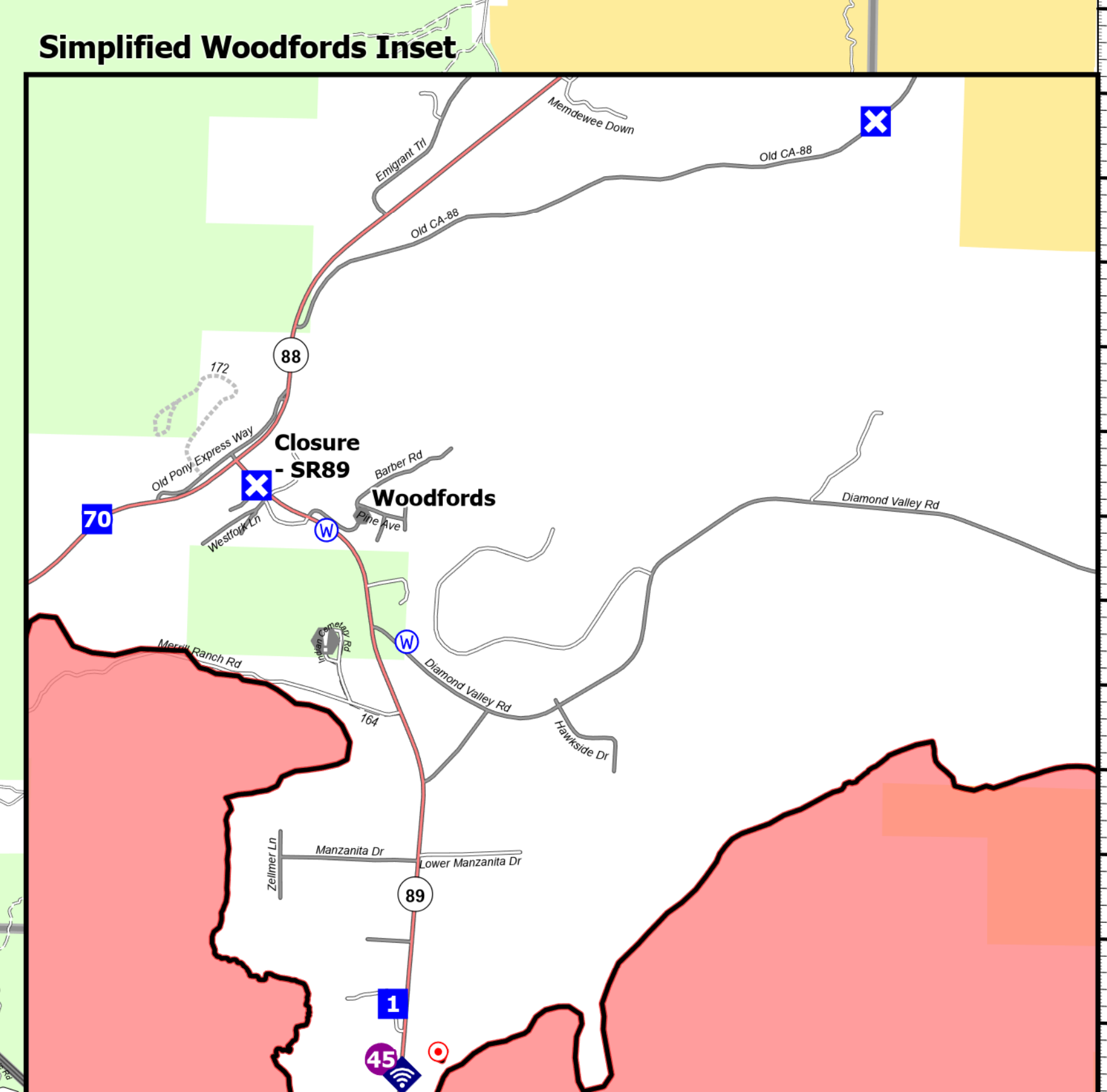
Tamarack  
 NV-HTF 0030419  
 7/25/2021  
 66,744 acres  
 as of 7/24/2021 1315 Hrs



FC Point Type	Label	Latitude WGS84	Longitude WGS84
Camp	Burnside Spike	38° 46.568' N	119° 55.158' W
Camp	Holstrom Spike	38° 48.068' N	119° 37.221' W
Drop Point	1	38° 45.445' N	119° 48.975' W
Drop Point	10	38° 41.088' N	119° 45.195' W
Drop Point	13	38° 40.572' N	119° 44.195' W
Drop Point	16	38° 40.238' N	119° 43.922' W
Drop Point	25	38° 39.061' N	119° 45.448' W
Drop Point	27	38° 37.848' N	119° 43.387' W
Drop Point	30	38° 48.240' N	119° 36.433' W
Drop Point	32	38° 46.838' N	119° 35.225' W
Drop Point	35	38° 43.938' N	119° 33.398' W
Drop Point	6	38° 41.754' N	119° 50.601' W
Drop Point	70	38° 46.409' N	119° 49.778' W
Drop Point	8	38° 41.696' N	119° 46.766' W
Drop Point	DP-36	38° 40.269' N	119° 37.607' W
Helispot	1	38° 34.513' N	119° 44.400' W
Helispot	40	38° 44.302' N	119° 52.345' W
Helispot	45	38° 45.332' N	119° 49.001' W
Helispot	51	38° 46.246' N	119° 42.937' W
Helispot	52	38° 46.043' N	119° 42.585' W
Helispot	54	38° 46.852' N	119° 40.446' W
Helispot	58	38° 47.820' N	119° 37.911' W
Helispot	H-85	38° 40.222' N	119° 37.660' W



- Dip Site
- Helispot
- X Division Break
- || Branch Break
- Drop Point
- Closure
- Camp
- Staging Area
- Hot Spot - Spot Fire
- Value at Risk
- Other
- Fire Station
- Resource Location
- Fence - Cut/Damaged
- Mobile Weather Unit
- Internet Access
- Repeater
- Water Source
- Restricted Water Source
- Contained Line
- Wildfire Daily Fire Perimeter
- Primary Highway
- Secondary Highway
- Paved Roads
- Dirt (Not Paved)
- Paved Road
- Gravel Road
- Dirt Roads
- Unimproved Roads
- Closed Roads
- State Boundaries
- County Boundaries
- Surface Management Agency
- Bureau of Indian Affairs
- Bureau of Land Management
- Bureau of Reclamation
- Local Government
- State
- US Forest Service
- Undetermined / Private



20210725 0915  
 Acres from Mixed Methods  
 North American 1983 Datum.  
 LatLong Grid