

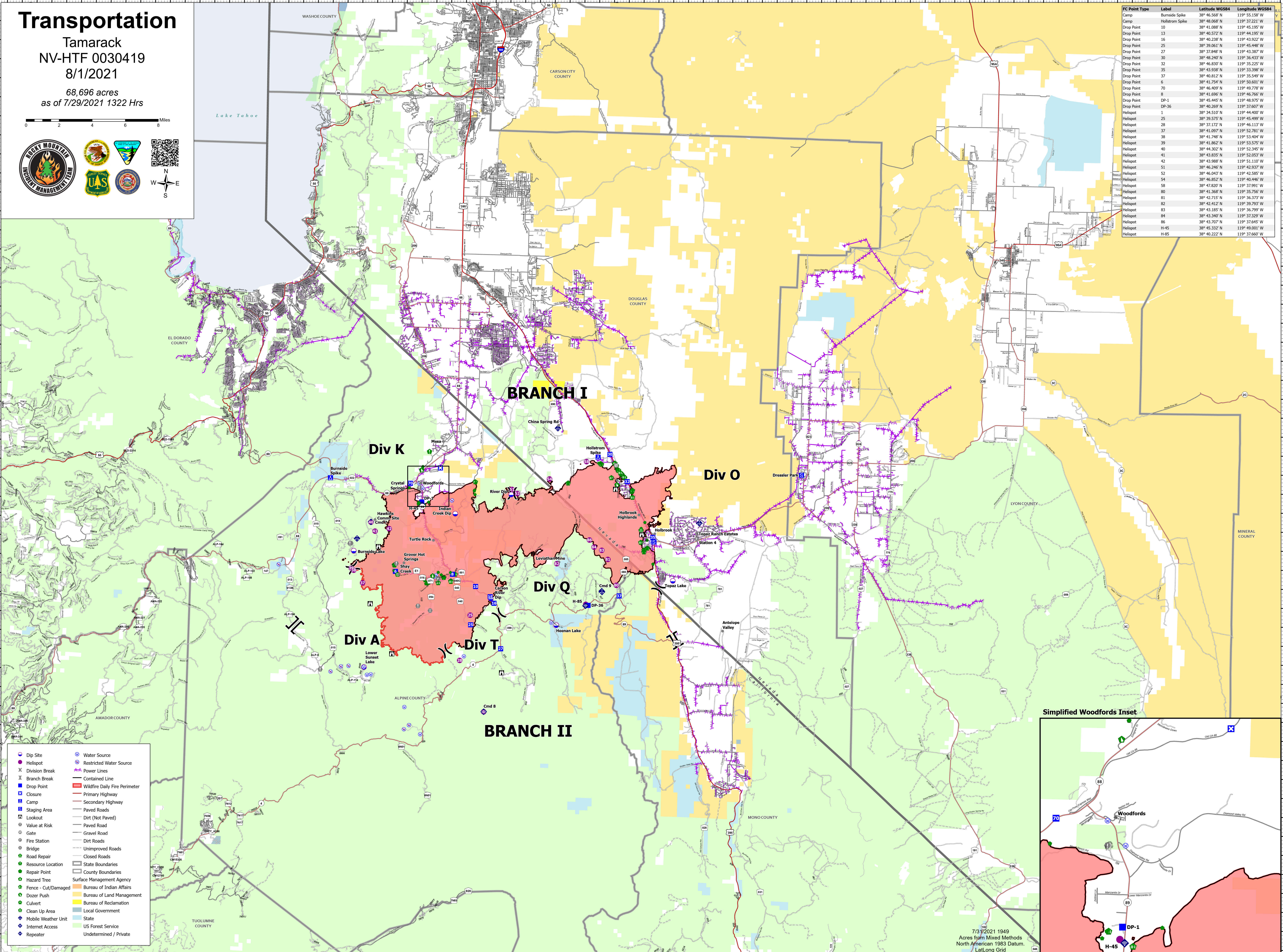
Transportation

Tamarack
NV-HTF 0030419
8/1/2021

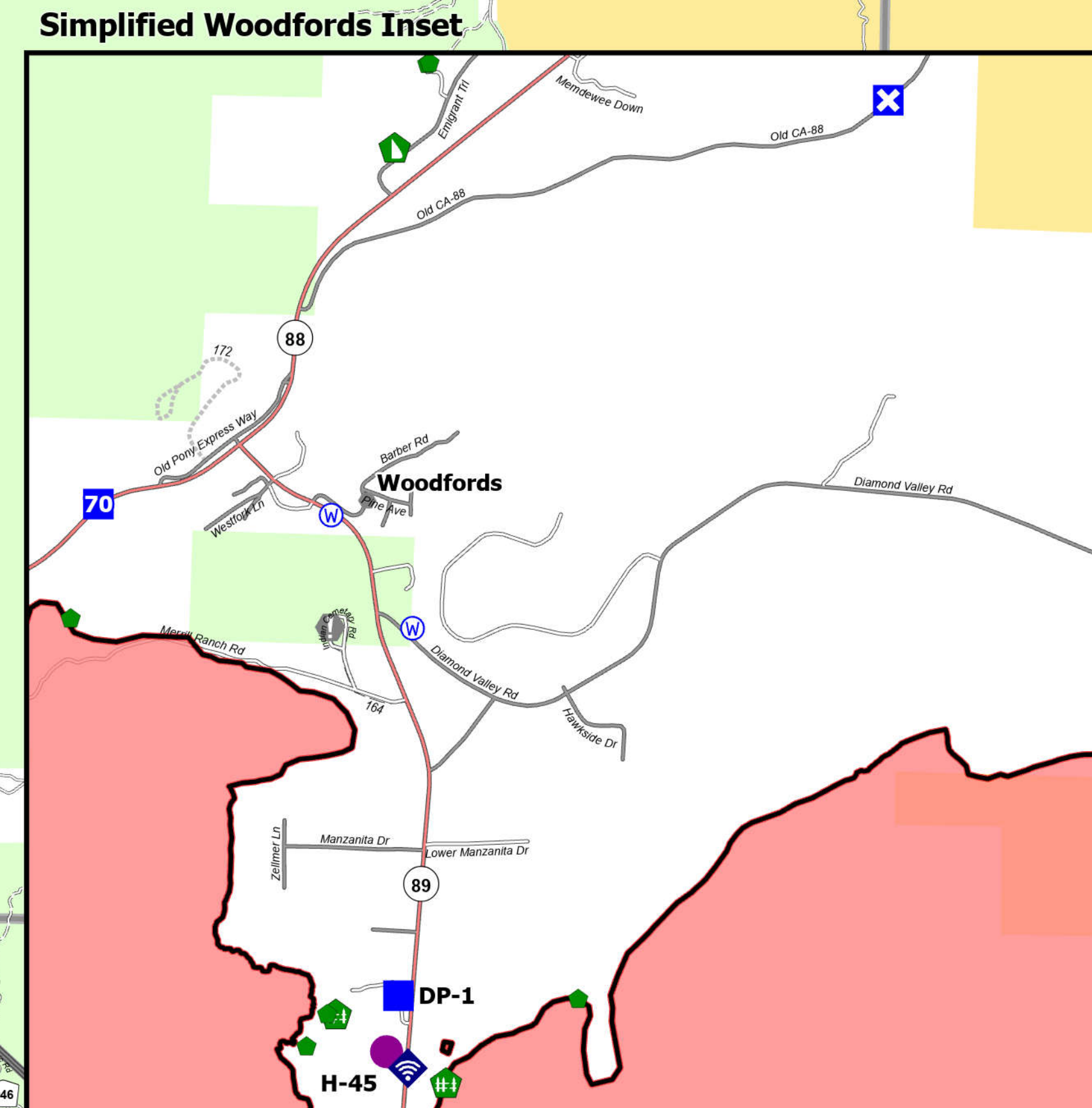
68,696 acres
as of 7/29/2021 1322 Hrs



FC Point Type	Label	Latitude WGS84	Longitude WGS84
Camp	Burnside Spike	38° 46.568' N	119° 55.150' W
Camp	Hollstrom Spike	38° 48.068' N	119° 37.221' W
Drop Point	10	38° 41.088' N	119° 45.195' W
Drop Point	13	38° 40.572' N	119° 44.195' W
Drop Point	16	38° 40.238' N	119° 43.922' W
Drop Point	25	38° 39.061' N	119° 45.448' W
Drop Point	27	38° 37.848' N	119° 43.387' W
Drop Point	30	38° 46.240' N	119° 36.433' W
Drop Point	32	38° 46.830' N	119° 35.225' W
Drop Point	35	38° 43.938' N	119° 33.398' W
Drop Point	37	38° 40.817' N	119° 35.549' W
Drop Point	6	38° 41.294' N	119° 50.601' W
Drop Point	70	38° 46.409' N	119° 49.778' W
Drop Point	8	38° 41.696' N	119° 46.766' W
Drop Point	DP-1	38° 45.445' N	119° 48.975' W
Drop Point	DP-36	38° 40.269' N	119° 37.607' W
Helispot	1	38° 34.510' N	119° 44.400' W
Helispot	25	38° 39.575' N	119° 45.499' W
Helispot	28	38° 37.172' N	119° 46.113' W
Helispot	37	38° 41.097' N	119° 52.781' W
Helispot	38	38° 41.748' N	119° 53.404' W
Helispot	39	38° 41.862' N	119° 53.575' W
Helispot	40	38° 44.302' N	119° 52.345' W
Helispot	41	38° 43.835' N	119° 52.053' W
Helispot	42	38° 43.988' N	119° 51.101' W
Helispot	51	38° 46.246' N	119° 42.037' W
Helispot	52	38° 46.043' N	119° 42.585' W
Helispot	54	38° 46.852' N	119° 40.446' W
Helispot	58	38° 47.820' N	119° 37.991' W
Helispot	80	38° 41.368' N	119° 35.796' W
Helispot	81	38° 42.715' N	119° 36.373' W
Helispot	82	38° 42.412' N	119° 39.793' W
Helispot	83	38° 43.185' N	119° 36.799' W
Helispot	84	38° 43.340' N	119° 37.329' W
Helispot	86	38° 43.707' N	119° 37.645' W
Helispot	H-45	38° 45.332' N	119° 49.001' W
Helispot	H-85	38° 40.222' N	119° 37.660' W



- Dip Site
- Helispot
- X Division Break
- Branch Break
- Drop Point
- Closure
- Camp
- Staging Area
- Lookout
- Value at Risk
- Gate
- Fire Station
- Bridge
- Road Repair
- Resource Location
- Repair Point
- Hazard Tree
- Fence - Cut/Damaged
- Dozer Push
- Culvert
- Clean Up Area
- Mobile Weather Unit
- Internet Access
- Repeater
- Water Source
- Restricted Water Source
- Power Lines
- Contained Line
- Wildfire Daily Fire Perimeter
- Primary Highway
- Secondary Highway
- Paved Roads
- Dirt (Not Paved)
- Paved Road
- Gravel Road
- Dirt Roads
- Unimproved Roads
- Closed Roads
- State Boundaries
- County Boundaries
- Surface Management Agency
- Bureau of Indian Affairs
- Bureau of Land Management
- Bureau of Reclamation
- Local Government
- State
- US Forest Service
- Undetermined / Private



7/31/2021 1949
Acres from Mixed Methods
North American 1983 Datum.
Lat/Long Grid