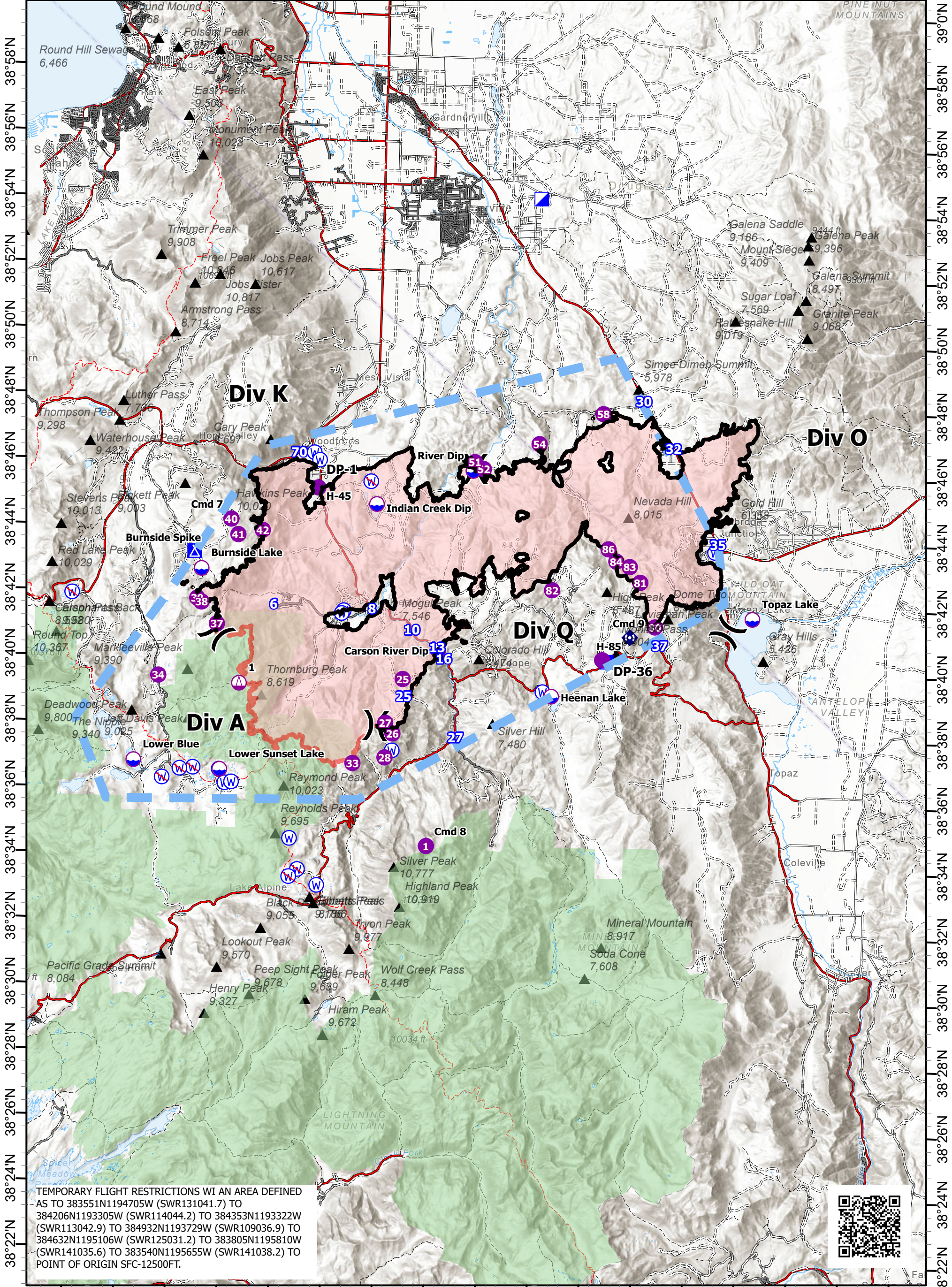


120°0'W 119°56'W 119°52'W 119°48'W 119°44'W 119°40'W 119°36'W 119°32'W 119°28'W



38°58'N 38°56'N 38°54'N 38°52'N 38°50'N 38°48'N 38°46'N 38°44'N 38°42'N 38°40'N 38°38'N 38°36'N 38°34'N 38°32'N 38°30'N 38°28'N 38°26'N 38°24'N 38°22'N

TEMPORARY FLIGHT RESTRICTIONS WITH AN AREA DEFINED AS TO 383551N1194705W (SWR131041.7) TO 384206N1193305W (SWR114044.2) TO 384353N1193322W (SWR113042.9) TO 384932N1193729W (SWR109036.9) TO 384632N1195106W (SWR125031.2) TO 383805N1195810W (SWR141035.6) TO 383540N1195655W (SWR141038.2) TO POINT OF ORIGIN SFC-12500FT.



Air Operations
 Tamarack
 NV-HTF 0030419
 8/14/2021
 68,637 acres
 as of 8/12/2021, 1400 Hrs



- Air Operations**
- Dip Site
 - Helispot
 - Sling Site
 - Assignment Breaks
 - Division Break

- Logistics**
- Incident Command Post
 - Drop Point
 - Camp
 - Communications
 - Repeater
 - Water
 - Water Source

- Restricted Water Source**
- Polygon Type
 - Other
 - Wildfire Daily Fire Perimeter
 - Wilderness
 - Air Ops
 - Temporary Flight Restriction
 - Fire Perimeter
 - Contained Line

