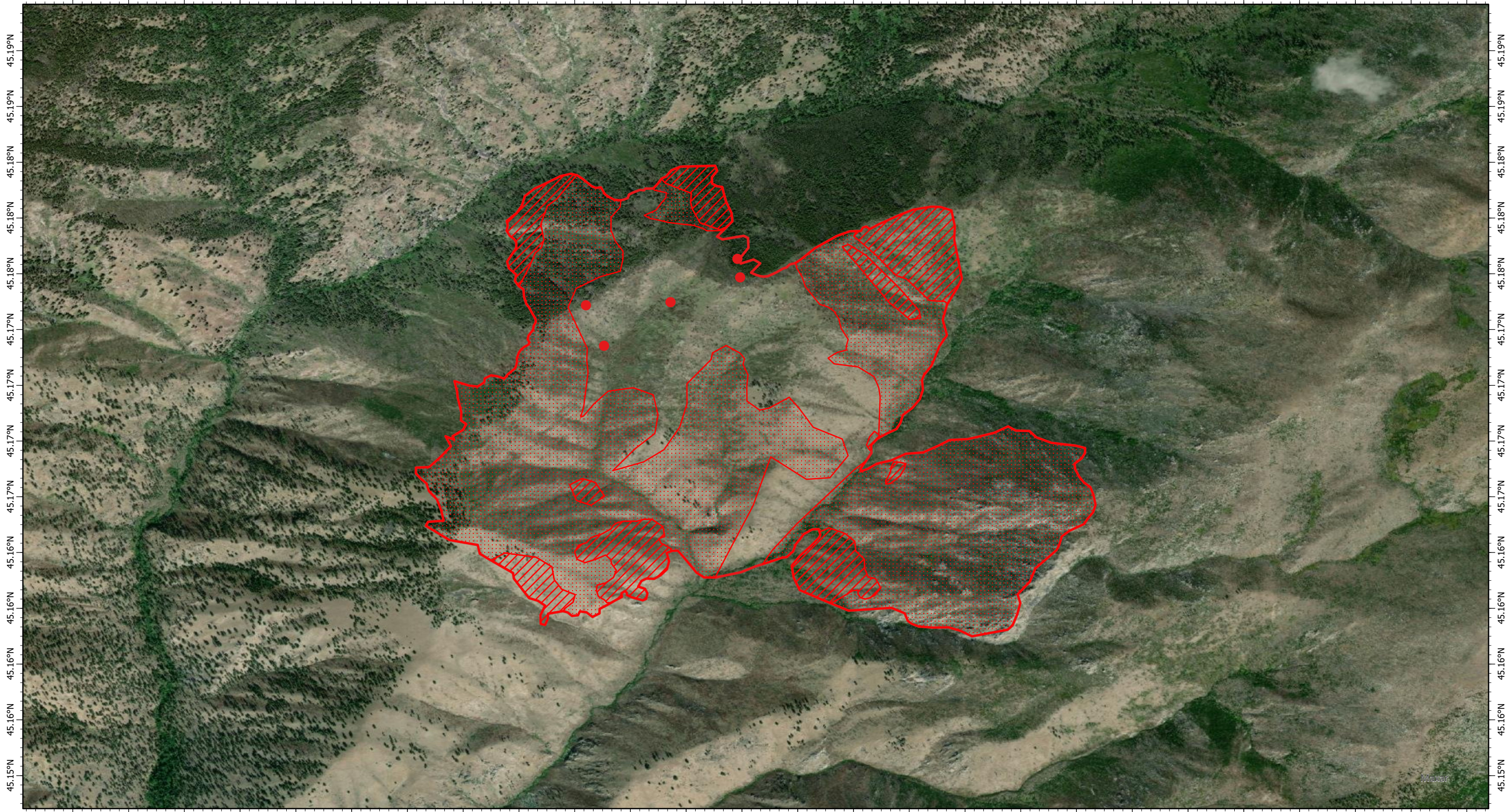


114.93°W 114.93°W 114.93°W 114.92°W 114.92°W 114.92°W 114.92°W 114.91°W 114.91°W 114.91°W 114.91°W 114.9°W 114.9°W 114.9°W 114.89°W 114.89°W 114.89°W 114.89°W 114.88°W 114.88°W 114.88°W 114.88°W 114.87°W 114.87°W 114.87°W 114.86°W



114.93°W 114.93°W 114.93°W 114.92°W 114.92°W 114.92°W 114.92°W 114.91°W 114.91°W 114.91°W 114.91°W 114.9°W 114.9°W 114.9°W 114.89°W 114.89°W 114.89°W 114.89°W 114.88°W 114.88°W 114.88°W 114.88°W 114.87°W 114.87°W 114.87°W 114.86°W

Vinegar Fire IR Map
ID-PAF-000433

26 July 2021, 2200 MDT
1,045 Interpreted Acres

Scale: 1:20,000
Projection: WGS 1984
Produced by: Owyhee Air Research, LLC
IR Interpreter: K. Hanks
Contact: fire@owyheear.com (208) 442-5405

Legend

- Isolated Heat
- Scattered Heat
- Intense Heat
- Burn Perimeter

