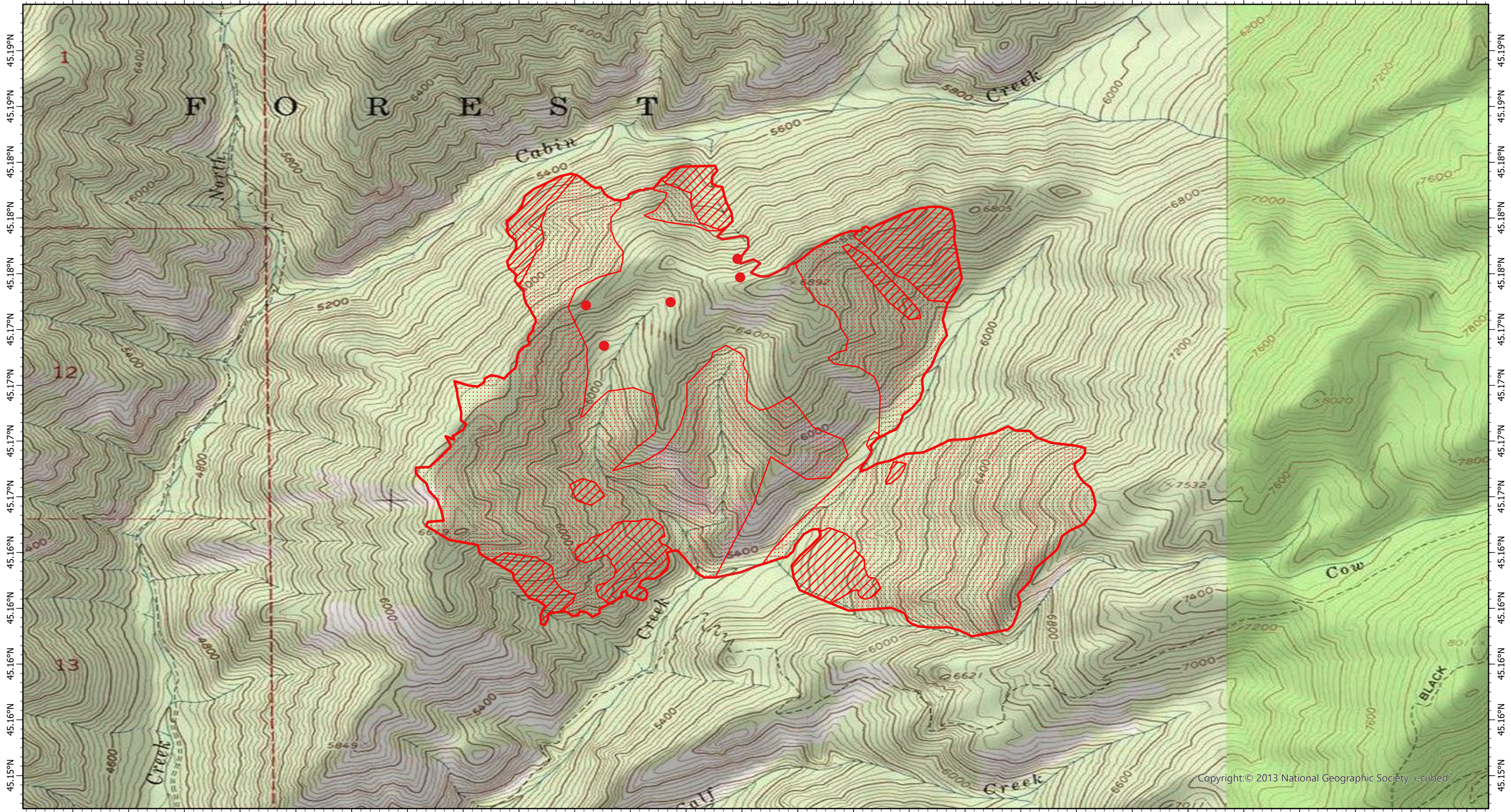


114.93°W 114.93°W 114.93°W 114.92°W 114.92°W 114.92°W 114.92°W 114.91°W 114.91°W 114.91°W 114.91°W 114.9°W 114.9°W 114.9°W 114.89°W 114.89°W 114.89°W 114.89°W 114.88°W 114.88°W 114.88°W 114.88°W 114.87°W 114.87°W 114.87°W 114.86°W



Copyright © 2013 National Geographic Society, i-cubed

114.93°W 114.93°W 114.93°W 114.92°W 114.92°W 114.92°W 114.92°W 114.91°W 114.91°W 114.91°W 114.91°W 114.9°W 114.9°W 114.9°W 114.89°W 114.89°W 114.89°W 114.89°W 114.88°W 114.88°W 114.88°W 114.88°W 114.87°W 114.87°W 114.87°W 114.86°W

# Vinegar Fire IR Map

## ID-PAF-000433

26 July 2021, 2200 MDT  
1,045 Interpreted Acres

Scale: 1:20,000  
Projection: WGS 1984  
Produced by: Owyhee Air Research, LLC  
IR Interpreter: K. Hanks  
Contact: fire@owyheeair.com (208) 442-5405

**Legend**

- Isolated Heat
- Burn Perimeter
- Scattered Heat
- Intense Heat

