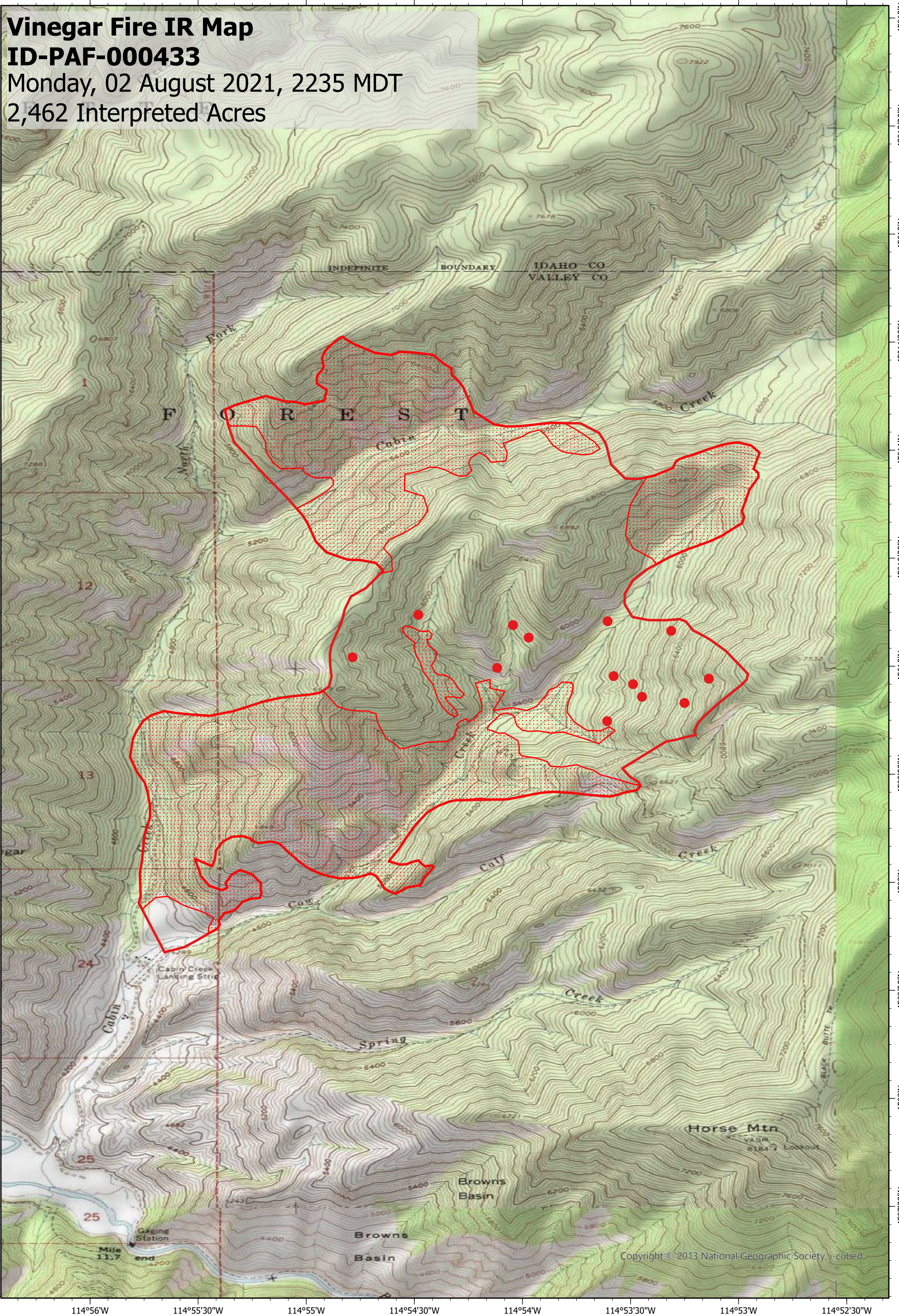


114°56'W 114°55'30"W 114°55'W 114°54'30"W 114°54'W 114°53'30"W 114°53'W 114°52'30"W

45°13'N 45°12'30"N 45°12'N 45°11'30"N 45°11'N 45°10'30"N 45°10'N 45°9'30"N 45°9'N 45°8'30"N 45°8'N 45°7'30"N

Vinegar Fire IR Map
ID-PAF-000433
Monday, 02 August 2021, 2235 MDT
2,462 Interpreted Acres



Copyright: © 2013 National Geographic Society, i-cubed

114°56'W 114°55'30"W 114°55'W 114°54'30"W 114°54'W 114°53'30"W 114°53'W 114°52'30"W

Legend

- Isolated Heat
- Scattered Heat
- Burn Perimeter

Scale: 1:30,000
Projection: WGS 1984
Produced by: Owyhee Air Research, LLC
IR Interpreter: K. Hanks
Contact: fire@owyheear.com (208) 442-5405

