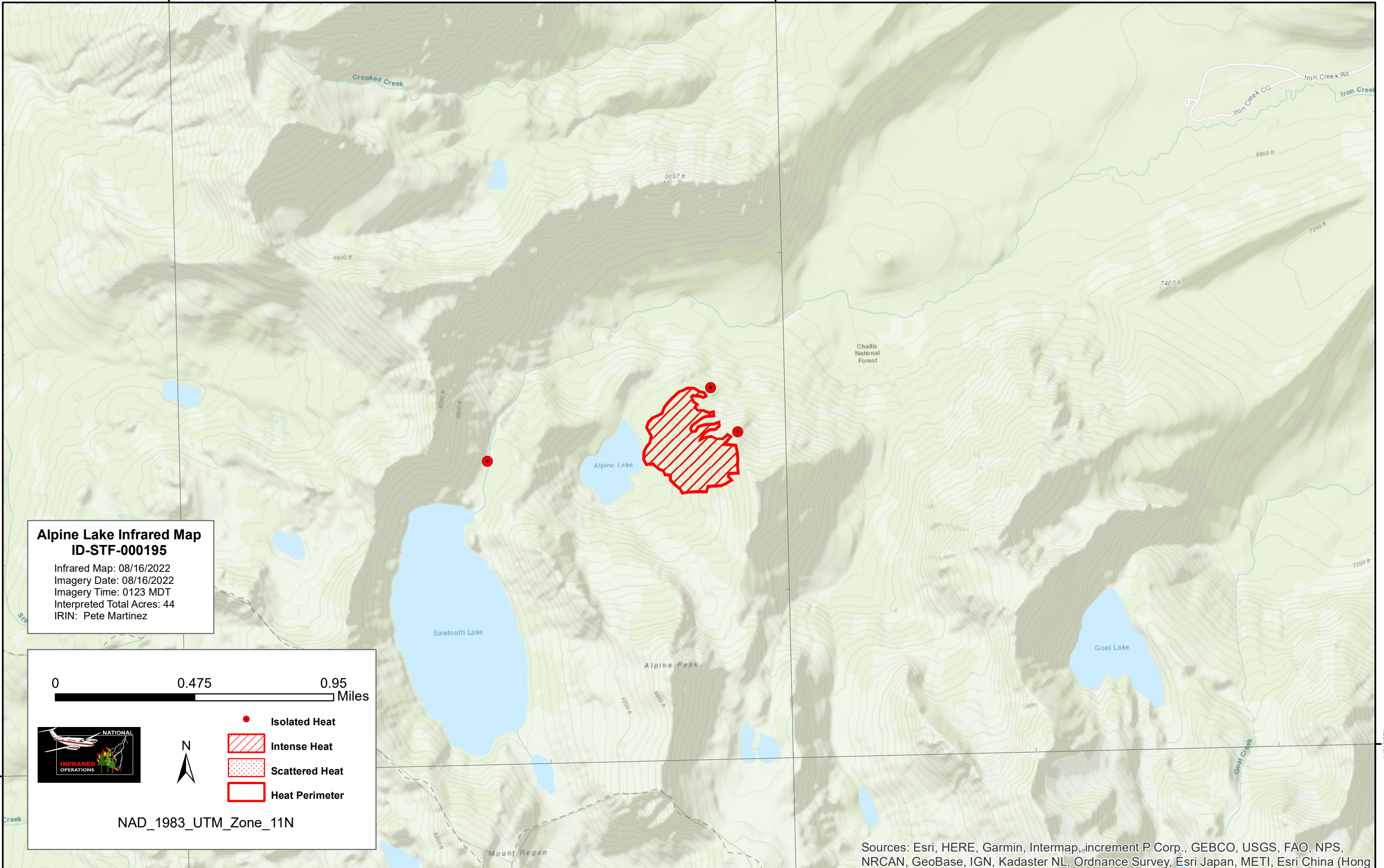


115°50'W

115°2'30"W



**Alpine Lake Infrared Map
ID-STF-000195**

Infrared Map: 08/16/2022
 Imagery Date: 08/16/2022
 Imagery Time: 0123 MDT
 Interpreted Total Acres: 44
 IRIN: Pete Martinez

0 0.475 0.95 Miles

N

- Isolated Heat
- / / / / Intense Heat
- Scattered Heat
- Heat Perimeter

NAD_1983_UTM_Zone_11N

Sources: Esri, HERE, Garmin, Intermap, increment P Corp., GEBCO, USGS, FAO, NPS, NRCAN, GeoBase, IGN, Kadaster NL, Ordnance Survey, Esri Japan, METI, Esri China (Hong

44°10'00"N

44°10'00"N

115°50'W

115°2'30"W