

115°50'W





115°2'30"W

### Alpine Lake Infrared Map ID-STF-000195

Infrared Map: 08/18/2022  
Imagery Date: 08/18/2022  
Imagery Time: 0124 MDT  
Interpreted Total Acres: 61  
IRIN: Pete Martinez

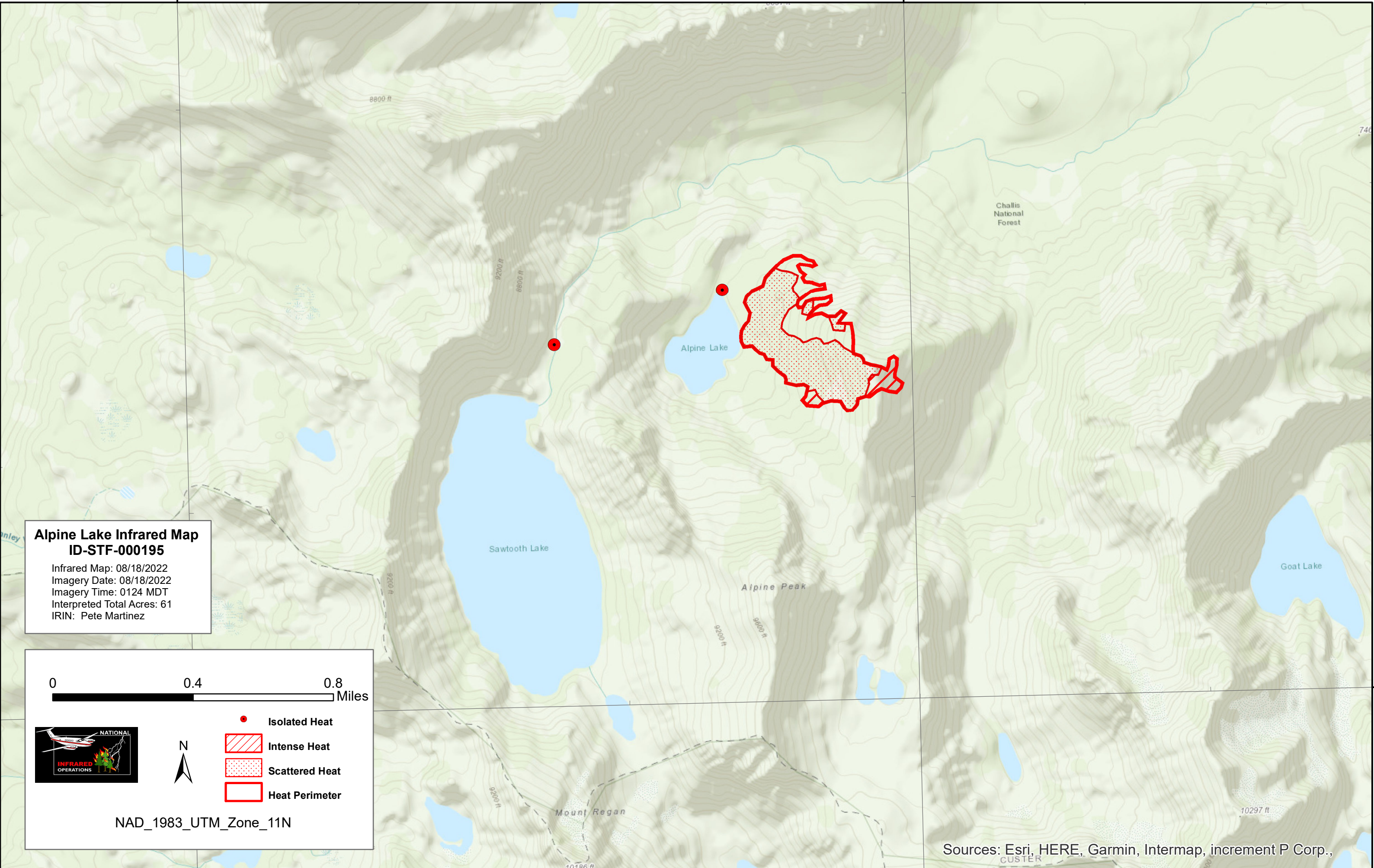
0 0.4 0.8 Miles



-  Isolated Heat
-  Intense Heat
-  Scattered Heat
-  Heat Perimeter

NAD\_1983\_UTM\_Zone\_11N

Sources: Esri, HERE, Garmin, Intermap, increment P Corp.,



44°10'0"N

44°10'0"N

115°50'W

115°2'30"W