

114°36'0"W

114°35'0"W

114°34'0"W

114°33'0"W

114°32'0"W

114°31'0"W

40°2'0"N

40°1'0"N

40°0'0"N

39°59'0"N

39°58'0"N

39°57'0"N

39°56'0"N

39°55'0"N

40°2'0"N

40°1'0"N

40°0'0"N

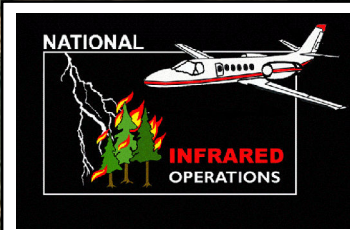
39°59'0"N

39°58'0"N

39°57'0"N

39°56'0"N

39°55'0"N

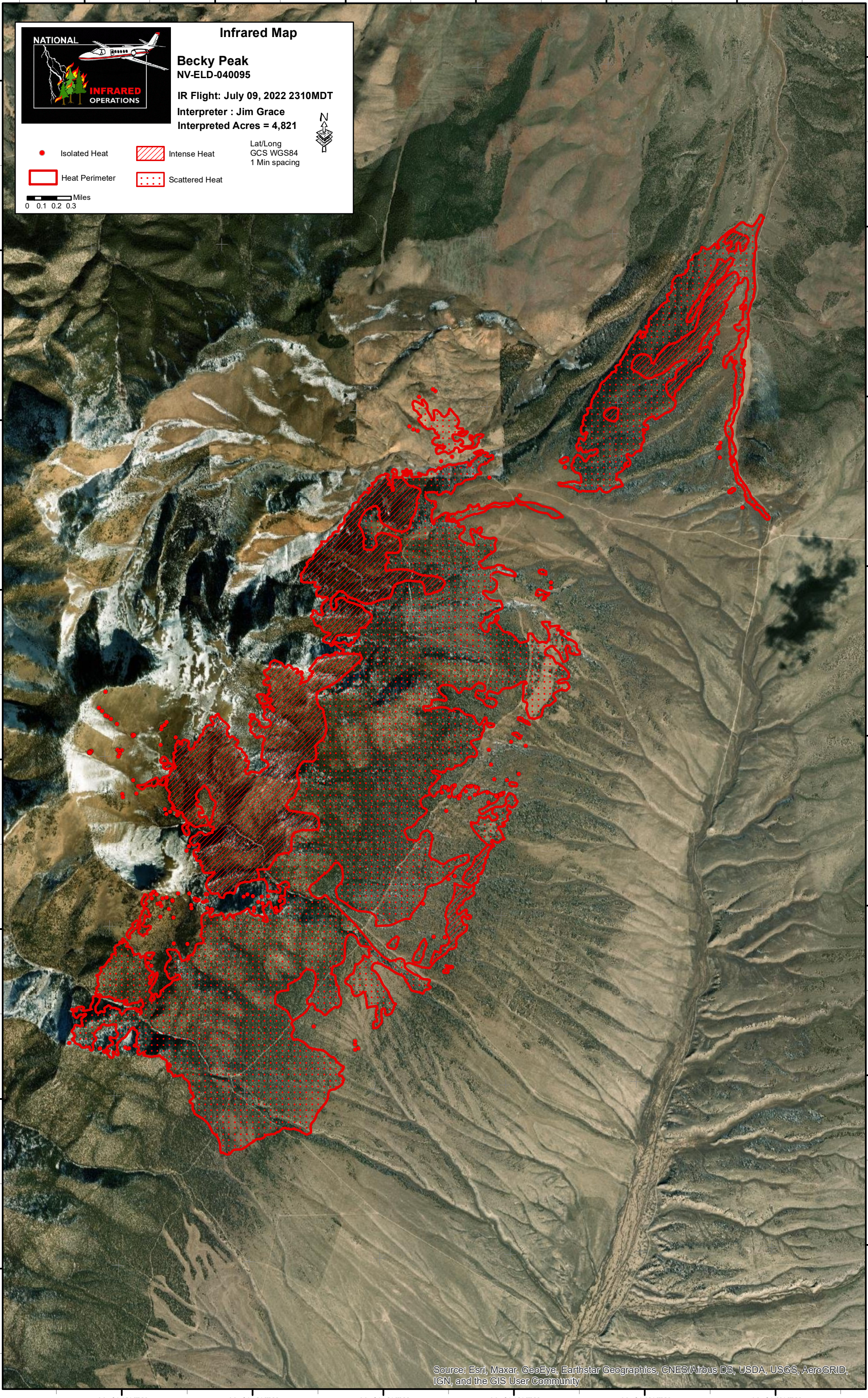
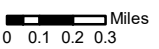


**Infrared Map**  
**Becky Peak**  
 NV-ELD-040095  
 IR Flight: July 09, 2022 2310MDT  
 Interpreter : Jim Grace  
 Interpreted Acres = 4,821



- Isolated Heat
- Heat Perimeter
- Intense Heat
- Scattered Heat

Lat/Long  
 GCS WGS84  
 1 Min spacing



Source: Esri, Maxar, GeoEye, Earthstar Geographics, CNES/Airbus DS, USDA, USGS, AeroGRID, IGN, and the GIS User Community

114°36'0"W

114°35'0"W

114°34'0"W

114°33'0"W

114°32'0"W

114°31'0"W