

114°36'0"W

114°35'0"W

114°34'0"W

114°33'0"W

114°32'0"W

114°31'0"W

40°2'0"N
40°1'0"N
40°0'0"N
39°59'0"N
39°58'0"N
39°57'0"N
39°56'0"N
39°55'0"N

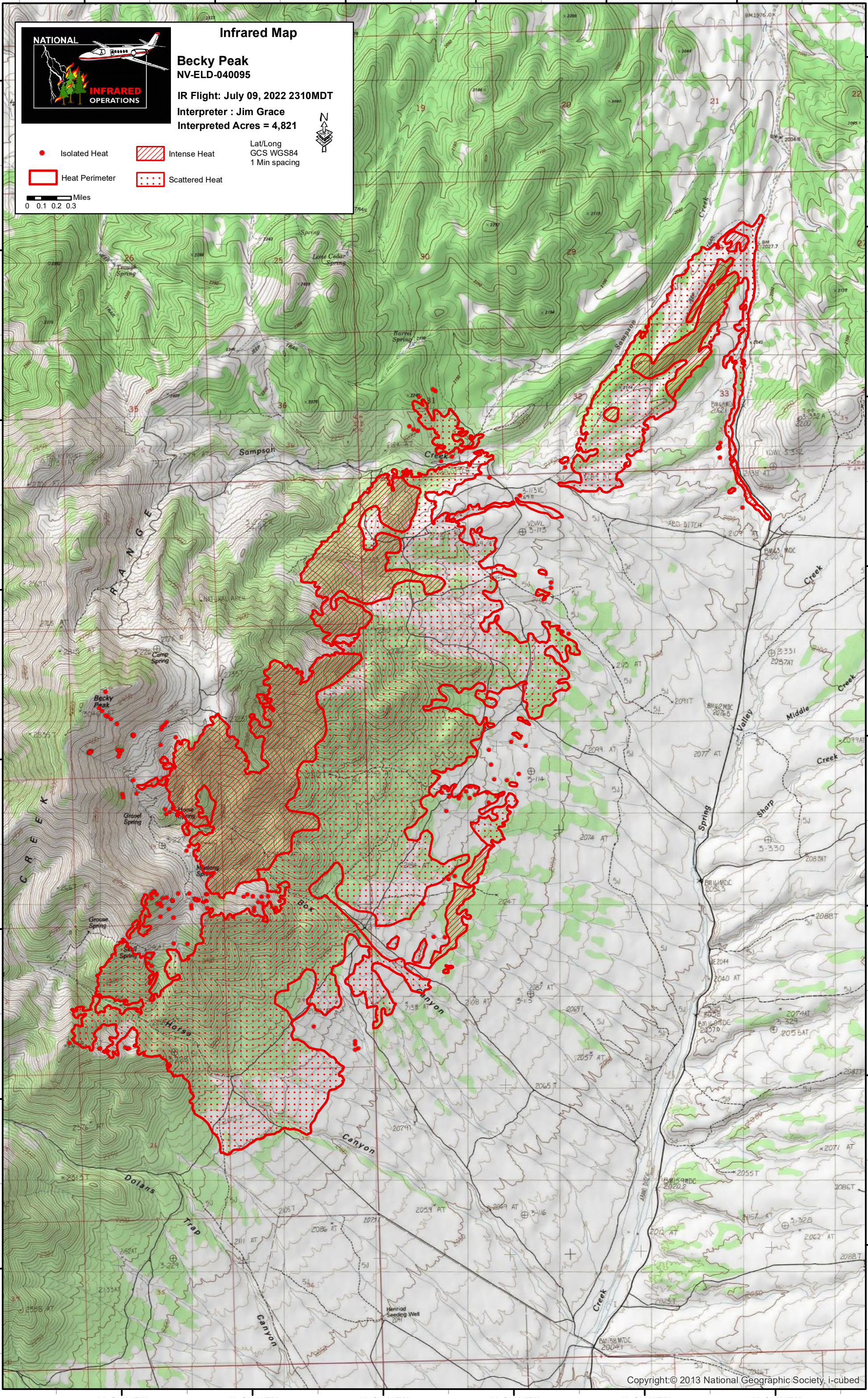
40°2'0"N
40°1'0"N
40°0'0"N
39°59'0"N
39°58'0"N
39°57'0"N
39°56'0"N
39°55'0"N



Infrared Map
Becky Peak
NV-ELD-040095
IR Flight: July 09, 2022 2310MDT
Interpreter: Jim Grace
Interpreted Acres = 4,821



- Isolated Heat
 - Heat Perimeter
 - Intense Heat
 - Scattered Heat
- Lat/Long
GCS WGS84
1 Min spacing
- Miles
0 0.1 0.2 0.3



114°36'0"W

114°35'0"W

114°34'0"W

114°33'0"W

114°32'0"W

114°31'0"W