

114°36'0"W

114°35'0"W

114°34'0"W

114°33'0"W


114°32'0"W

114°31'0"W

40°2'0"N
40°1'0"N
40°0'0"N
39°59'0"N
39°58'0"N
39°57'0"N
39°56'0"N
39°55'0"N

40°2'0"N
40°1'0"N
40°0'0"N
39°59'0"N
39°58'0"N
39°57'0"N
39°56'0"N
39°55'0"N

NATIONAL INFRARED OPERATIONS



Infrared Map

Becky Peak
NV-ELD-040095

IR Flight: July 10, 2022 2312 MDT
Interpreter: Jim Grace
Interpreted Acres = 5,436


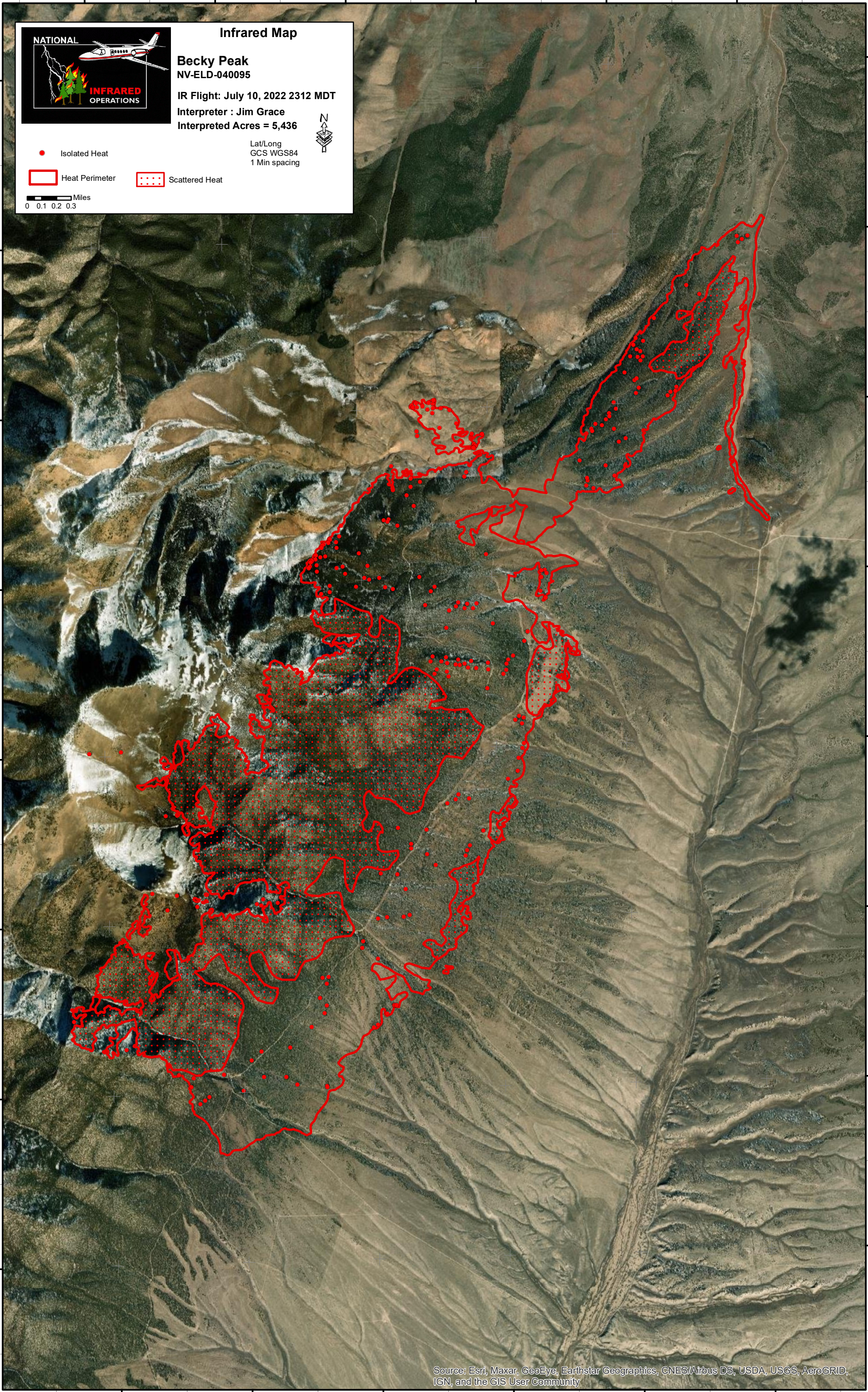
Lat/Long
GCS WGS84
1 Min spacing

● Isolated Heat

▭ Heat Perimeter

▭ Scattered Heat

0 0.1 0.2 0.3 Miles

Source: Esri, Maxar, GeoEye, Earthstar Geographics, CNES/Airbus DS, USDA, USGS, AeroGRID, IGN, and the GIS User Community

114°36'0"W

114°35'0"W

114°34'0"W

114°33'0"W

114°32'0"W

114°31'0"W