

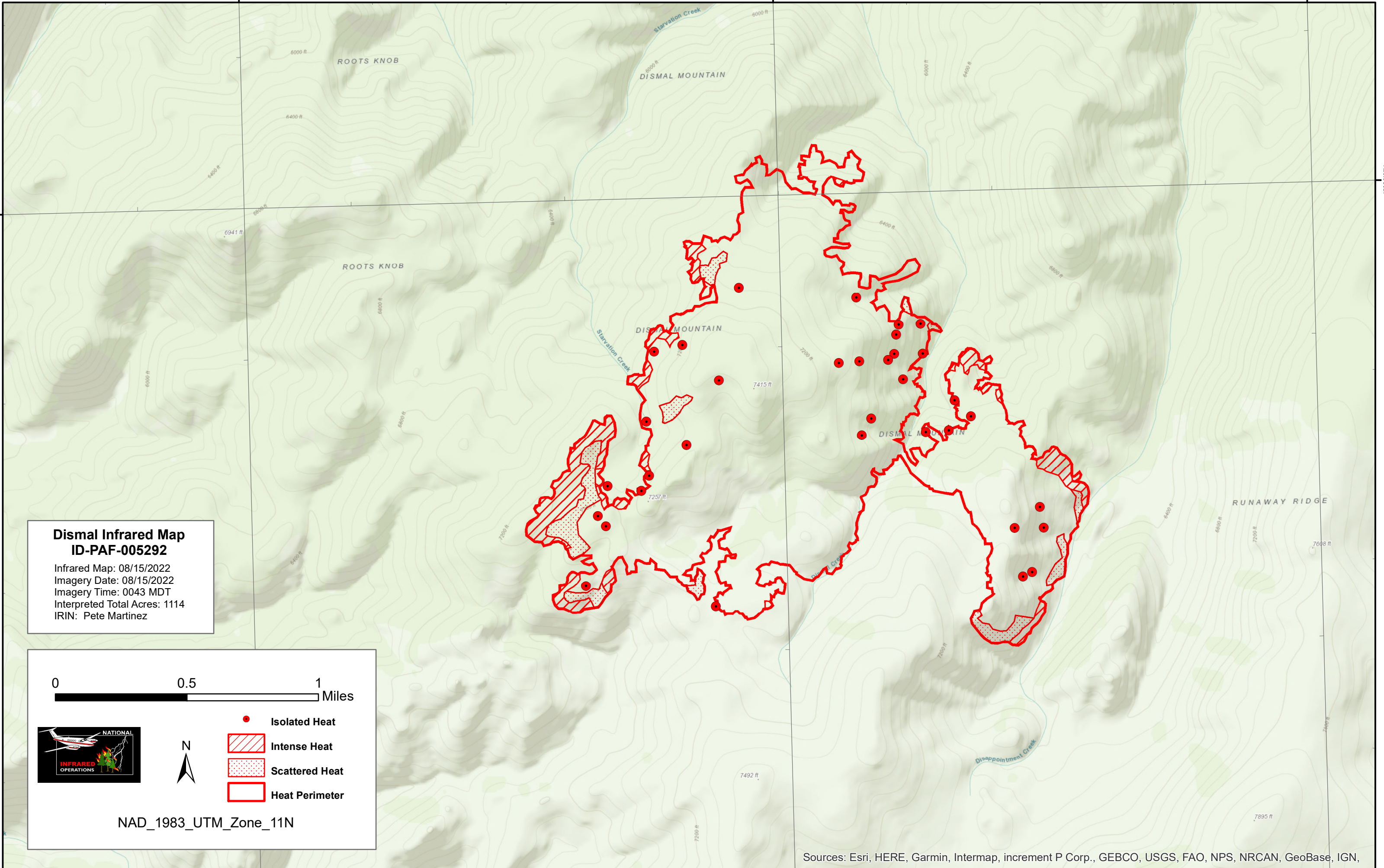
115°00'W

114°57'30"W

114°55'0"W

45°20'0"N

45°20'0"N



Dismal Infrared Map
ID-PAF-005292
 Infrared Map: 08/15/2022
 Imagery Date: 08/15/2022
 Imagery Time: 0043 MDT
 Interpreted Total Acres: 1114
 IRIN: Pete Martinez

0 0.5 1 Miles

N

- Isolated Heat
- Intense Heat
- Scattered Heat
- Heat Perimeter

NAD_1983_UTM_Zone_11N

Sources: Esri, HERE, Garmin, Intermap, increment P Corp., GEBCO, USGS, FAO, NPS, NRCAN, GeoBase, IGN,

115°00'W

114°57'30"W

114°55'0"W