

115°0'0"W

114°57'30"W

114°55'0"W

45°20'0"N

45°20'0"N

45°17'30"N

45°17'30"N


115°0'0"W

114°57'30"W

114°55'0"W

Dismal Infrared Map
ID-PAF-005292
 Infrared Map: 08/18/2022
 Imagery Date: 08/18/2022
 Imagery Time: 0050 MDT
 Interpreted Total Acres: 1664
 IRIN: Pete Martinez

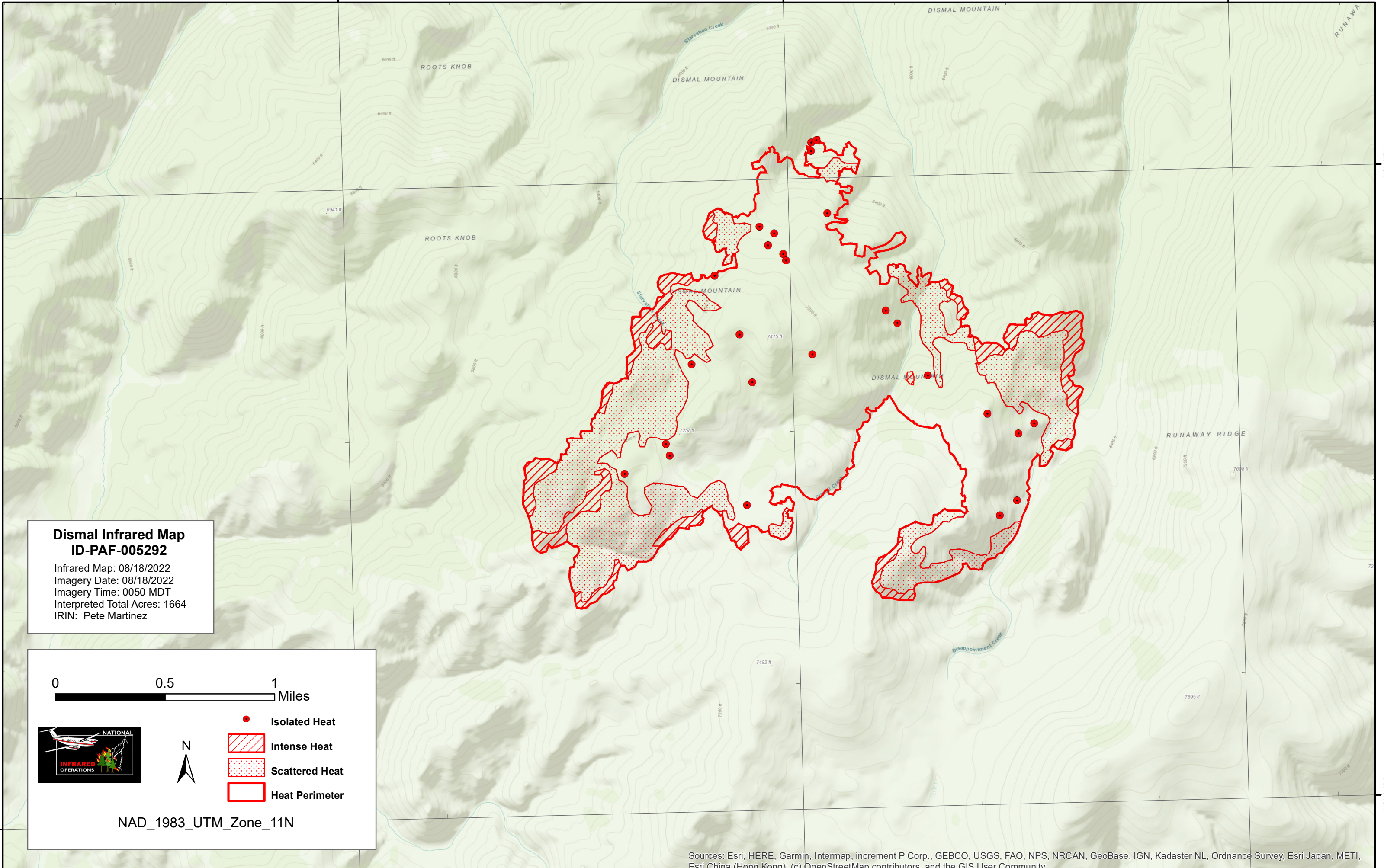
0 0.5 1 Miles



N

- Isolated Heat
- Intense Heat
- Scattered Heat
- Heat Perimeter

NAD_1983_UTM_Zone_11N



Sources: Esri, HERE, Garmin, Intermap, increment P Corp., GEBCO, USGS, FAO, NPS, NRCAN, GeoBase, IGN, Kadaster NL, Ordnance Survey, Esri Japan, METI, Esri China (Hong Kong), (c) OpenStreetMap contributors, and the GIS User Community