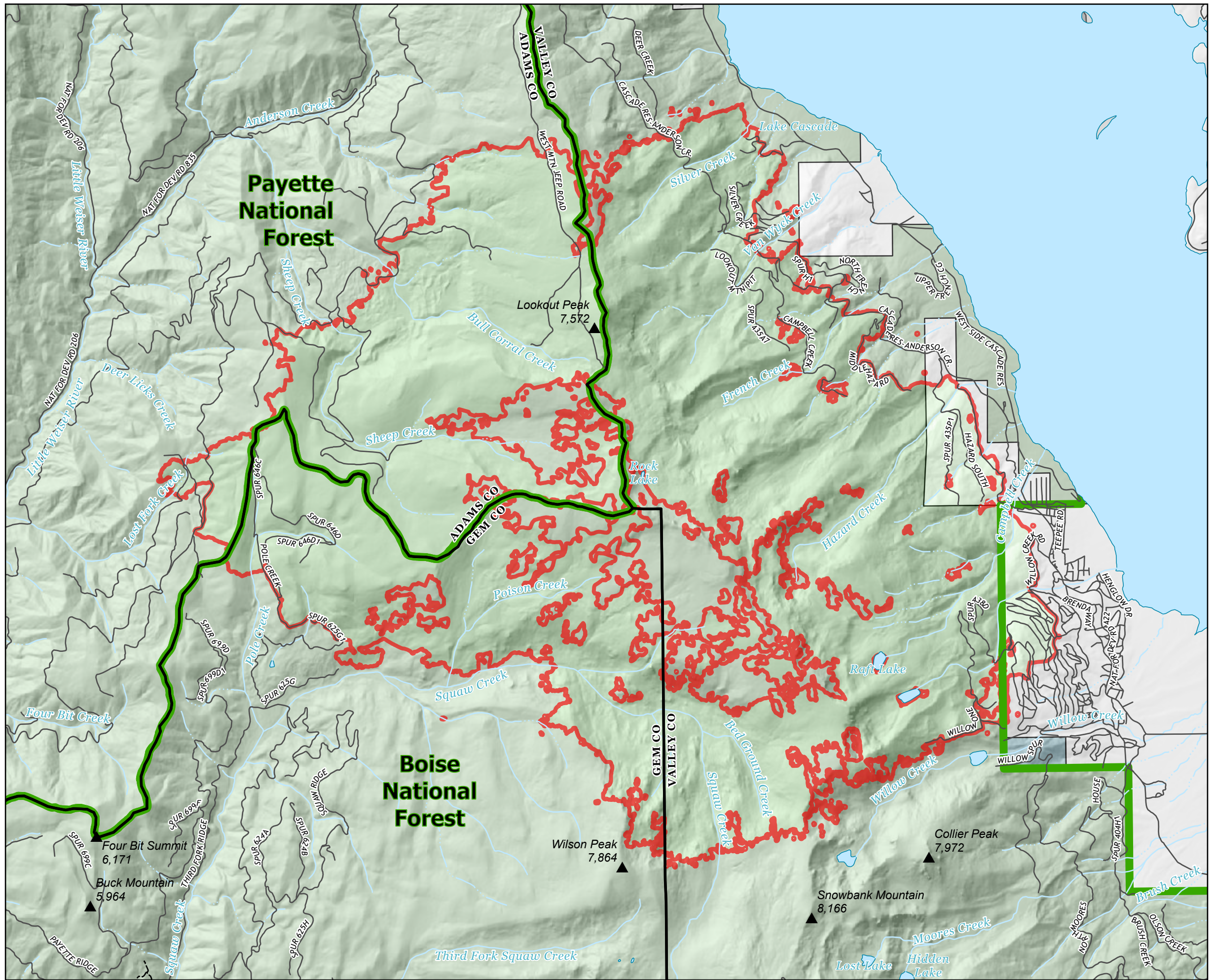


OWNERSHIP
FOUR CORNERS
 ID-PAF-005394
 9/12/2022
 13,717 ACRES
 9/11/22 @ 2242MDT

Ownership	Acres	Percent
Boise National Forest	9,555	70%
Payette National Forest	3,611	26%
Private	551	4%

County	Acres	Percent
Adams	3,616	31%
Gem	2,681	22%
Valley	7,420	47%
Total	13,717	100%

- FIRE PERIMETER
- ADMINISTRATIVE FOREST BOUNDARY
- STATE
- US FOREST SERVICE
- PRIVATE



0 0.5 1 MILES

