



# Four Corners Fire Dashboard

Updated daily @ 1800

## FOUR CORNERS

**8,361 Ac**

Percent Contained

**11%**

Estimated Cost to Date

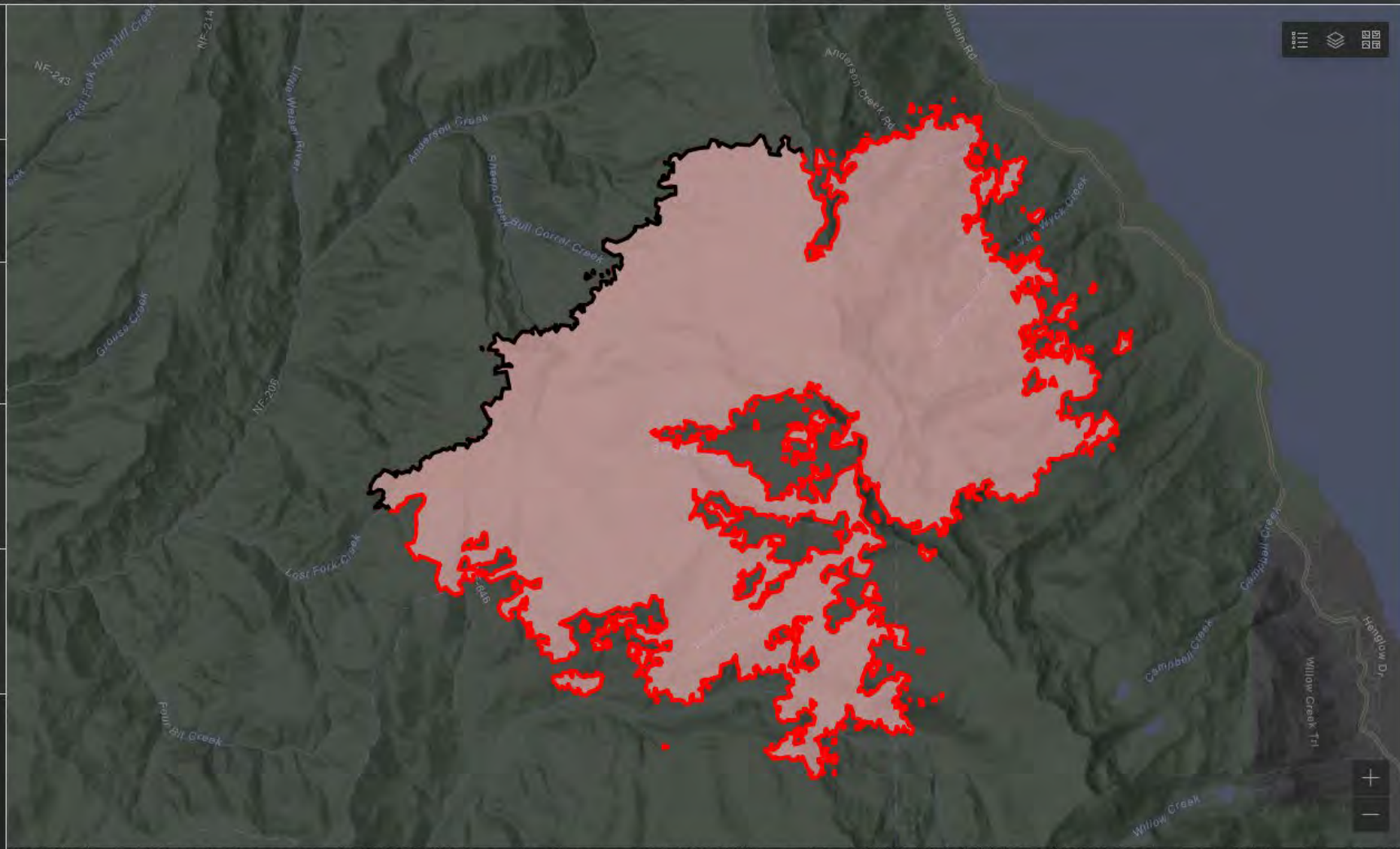
**\$10.4M**

Total Incident Personnel

**724**



● USFS 100%



# Four Corners Fire - General Weather Outlook

See the IAP for the Official Forecast



Forecast made Wednesday, August 24 - IMET Steven Van Horn (Trainee)

Afternoon Conditions	Thu	Fri	Sat	Sun	Mon	Tue
	25-Aug	26-Aug	27-Aug	28-Aug	29-Aug	30-Aug
Clouds @ 1500 (%)	20	10	40	40	50	40
6500 ft Max Temp (F)	80	78	76	71	69	72
Min Humidity (%)	25	25	26	28	29	27
Haines Index	3	3	3	2	3	3
Precip Chance (%)	0	0	0	15	25	20
CWR (>= 0.10")	0	0	0	0	10	5
LAL	1	1	1	1	1	1
Ridge Wind (mph)	8	9	10	7	6	6
Ridge Gusts (mph)	16	17	20	12	11	11
Wind Direction*	W	WSW	SW	WSW	WSW	W
RH Recovery		Poor	Poor	Fair	Fair	Good
<b>Do not use this Matrix after Thursday 8/25</b>						

**KEY:**

**Moderate Burning Conditions**

**Elevated Burning Conditions**

**Extreme Burning Conditions**

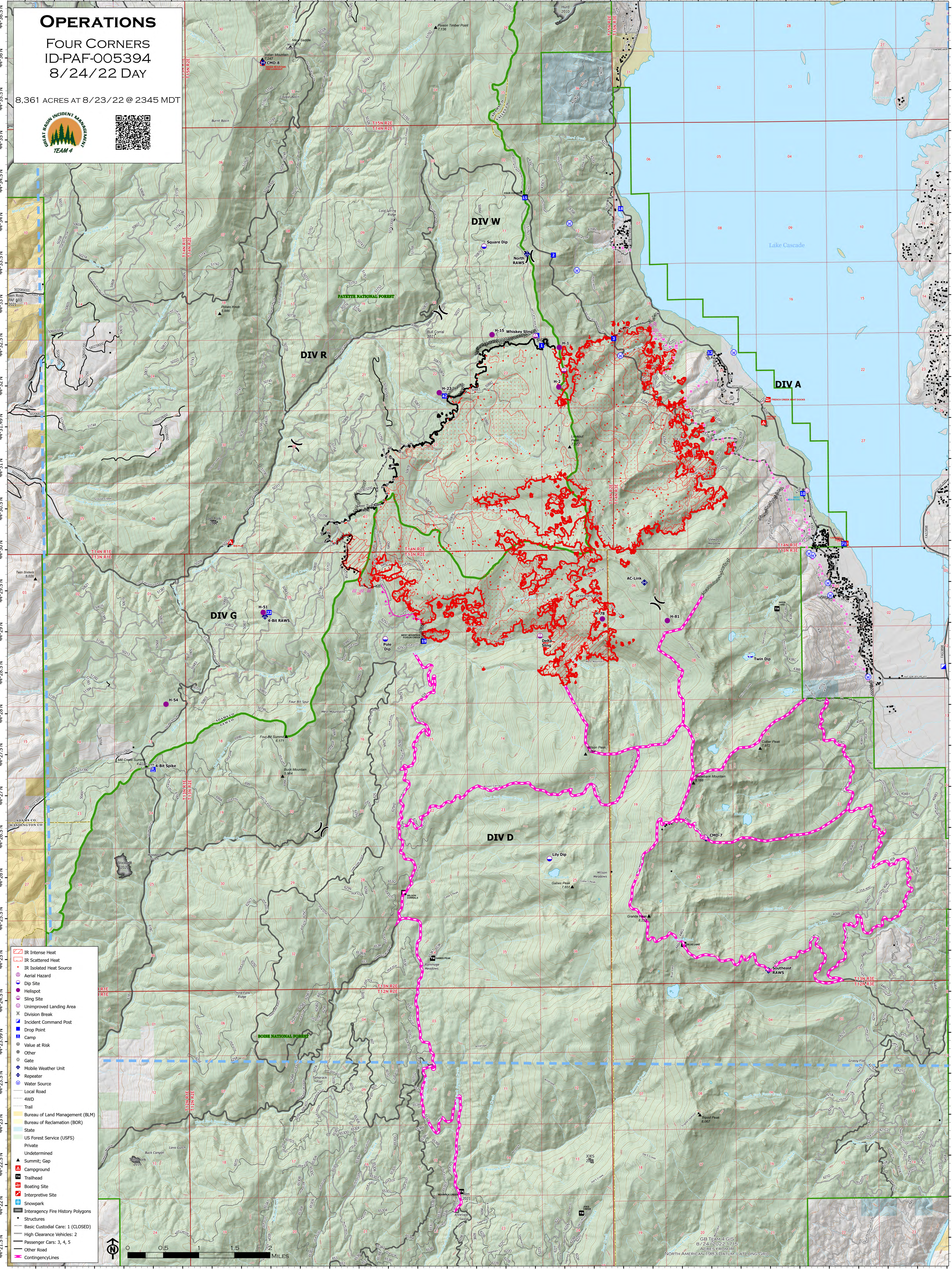
Clouds	> 31 %	0 to 30 %	
Avg Max Temp	< 76 F	75 to 79 F	80 F or warmer
Precip Chance	50 % or greater	0 to 49 %	
Recovery	56% or greater	41%-55%	40% or less
Ridge Wind	Less than 13 mph	13 to 19 mph	20 mph or more
*Wind Direction	Criticality of wind direction highly dependent on burn operations and/or structures threatened		
Min Humidity	25% or more	13 to 24 %	23% or less
Haines Index	2, 3, 4	5	6

**4 extreme blocks in a day signals potential for a Critical Weather**

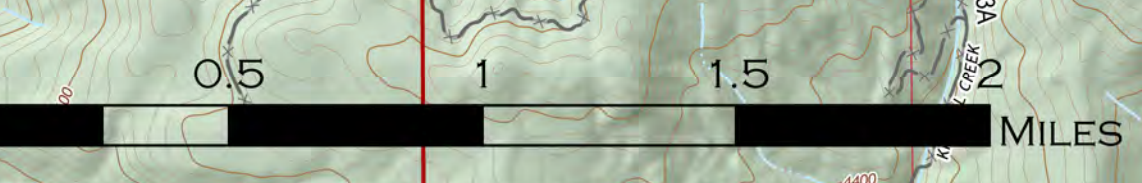
# OPERATIONS

FOUR CORNERS  
ID-PAF-005394  
8/24/22 DAY

8,361 ACRES AT 8/23/22 @ 2345 MDT



- IR Intense Heat
- IR Scattered Heat
- IR Isolated Heat Source
- Aerial Hazard
- Dip Site
- Helispot
- Sling Site
- Unimproved Landing Area
- Division Break
- Incident Command Post
- Drop Point
- Camp
- Value at Risk
- Other
- Gate
- Mobile Weather Unit
- Repeater
- Water Source
- Local Road
- 4WD
- Trail
- Bureau of Land Management (BLM)
- Bureau of Reclamation (BOR)
- State
- US Forest Service (USFS)
- Private
- Undetermined
- Summit, Gap
- Campground
- Trailhead
- Boating Site
- Interpretive Site
- Snowpark
- Interagency Fire History Polygons
- Structures
- Basic Custodial Care: 1 (CLOSED)
- High Clearance Vehicles: 2
- Passenger Cars: 3, 4, 5
- Other Road
- Contingency Lines



GB TEAM 4 GIS  
8/24/2022 1715  
ACRES FROM  
NORTH AMERICAN 1983 DATUM, LATLONG GRID