



FOUR CORNERS

8,752 Ac

Percent Contained

18%

Estimated Cost to Date

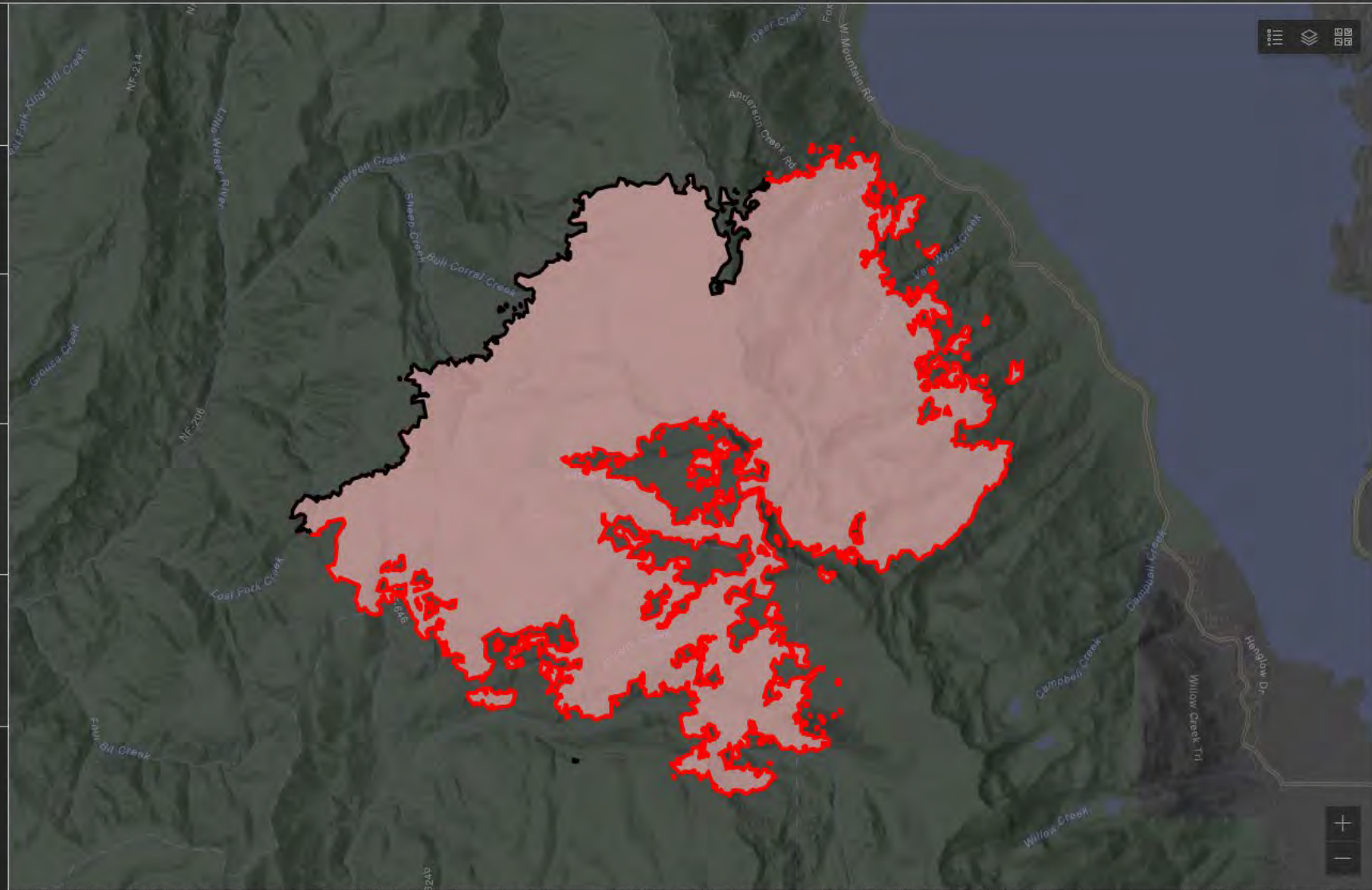
\$11.8M

Total Incident Personnel

766



● USFS 100%



Four Corners Fire - General Weather Outlook

See the IAP for the Official Forecast



Forecast made Thursday, August 25 - IMET Steven Van Horn (Trainee)

Afternoon Conditions	Fri	Sat	Sun	Mon	Tue	Wed
	26-Aug	27-Aug	28-Aug	29-Aug	30-Aug	31-Aug
Clouds @ 1500 (%)	10	60	10	0	0	0
6500 ft Max Temp (F)	76	68	70	74	78	82
Min Humidity (%)	26	31	22	25	22	19
Haines Index	3	3	4	3	4	5
Precip Chance (%)	0	30	0	0	0	0
CWR (>= 0.10")	0	10	0	0	10	5
LAL	1	2	1	1	1	1
Ridge Wind (mph)	9	15	6	6	5	6
Ridge Gusts (mph)	17	26	10	11	10	11
Wind Direction*	W	SW -> NW	WSW	W	WSW	SW
RH Recovery		Fair	Fair	Fair	Fair	Fair
Do not use this Matrix after Friday 8/26						

KEY:

Moderate Burning Conditions

Elevated Burning Conditions

Extreme Burning Conditions

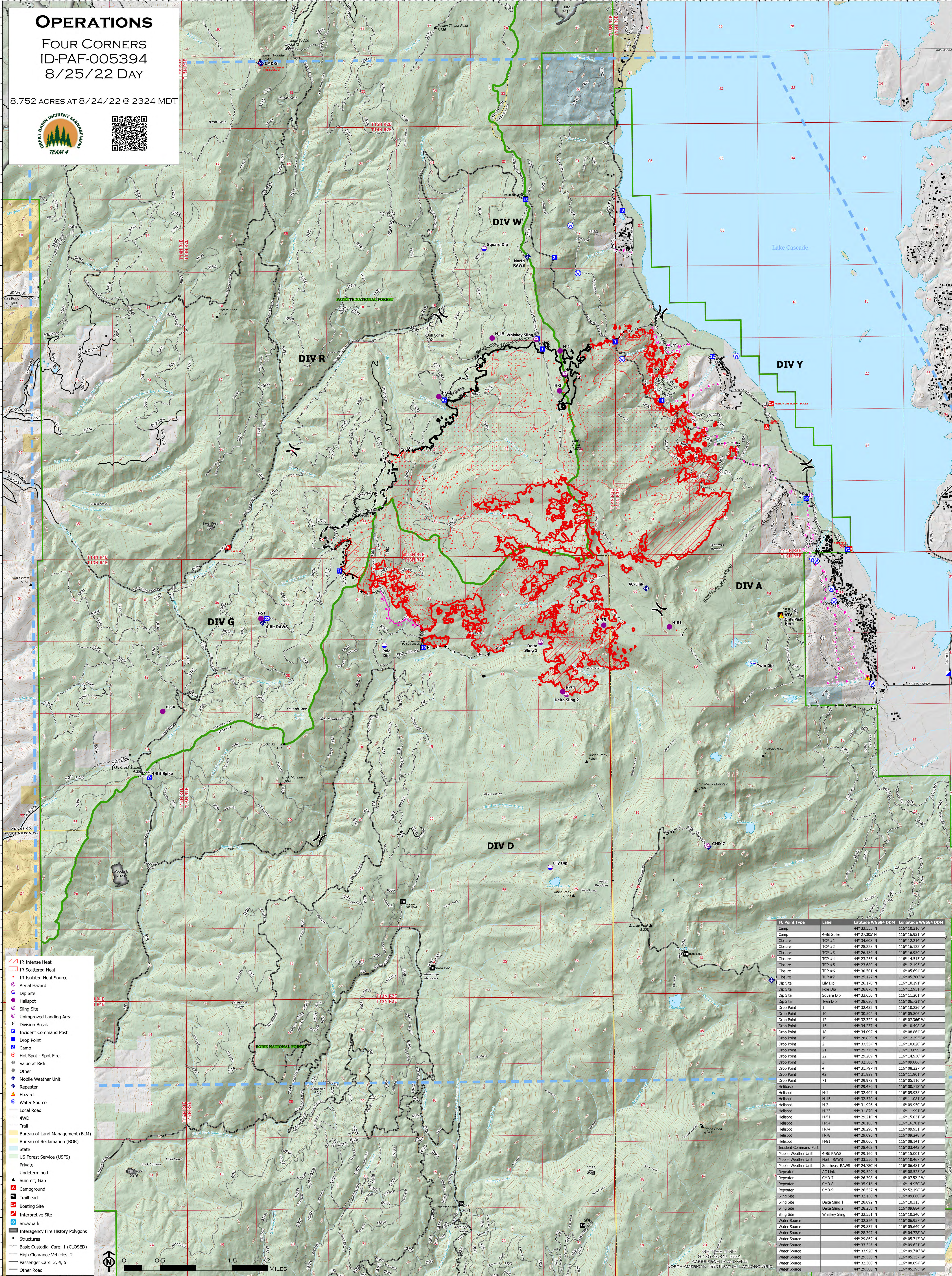
Clouds	> 31 %	0 to 30 %	
Avg Max Temp	< 76 F	75 to 79 F	80 F or warmer
Precip Chance	50 % or greater	0 to 49 %	
RH Recovery	56% or greater	41%-55%	40% or less
Ridge Wind	Less than 13 mph	13 to 19 mph	20 mph or more
*Wind Direction	Criticality of wind direction highly dependent on burn operations and/or structures threatened		
Min Humidity	30% or more	25 to 29 %	24% or less
Haines Index	2, 3, 4	5	6

4 extreme blocks in a day signals potential for a Critical Weather

OPERATIONS

FOUR CORNERS
ID-PAF-005394
8/25/22 DAY

8,752 ACRES AT 8/24/22 @ 2324 MDT



- IR Intense Heat
- IR Scattered Heat
- IR Isolated Heat Source
- Aerial Hazard
- Dip Site
- Helispot
- Sling Site
- Unimproved Landing Area
- Division Break
- Incident Command Post
- Drop Point
- Camp
- Hot Spot - Spot Fire
- Value at Risk
- Other
- Mobile Weather Unit
- Repeater
- Hazard
- Water Source
- Local Road
- 4WD
- Trail
- Bureau of Land Management (BLM)
- Bureau of Reclamation (BOR)
- State
- US Forest Service (USFS)
- Private
- Undetermined
- Summit, Gap
- Campground
- Trailhead
- Boating Site
- Interpretive Site
- Snowpark
- Interagency Fire History Polygons
- Structures
- Basic Custodial Care: 1 (CLOSED)
- High Clearance Vehicles: 2
- Passenger Cars: 3, 4, 5
- Other Road

FC Point Type	Label	Latitude WGS84 DDM	Longitude WGS84 DDM
Camp	4-Bit Spike	44° 27.305' N	116° 10.316' W
Closure	TCP #1	44° 26.988' N	116° 12.241' W
Closure	TCP #2	44° 26.232' N	116° 16.122' W
Closure	TCP #3	44° 26.189' N	116° 16.950' W
Closure	TCP #4	44° 23.252' N	116° 14.515' W
Closure	TCP #5	44° 23.680' N	116° 12.195' W
Closure	TCP #6	44° 30.501' N	116° 05.694' W
Closure	TCP #7	44° 25.127' N	116° 05.750' W
Dip Site	Lily Dip	44° 26.170' N	116° 10.191' W
Dip Site	Pole Dip	44° 28.870' N	116° 12.551' W
Dip Site	Square Dip	44° 33.650' N	116° 11.201' W
Dip Site	Twin Dip	44° 28.620' N	116° 06.731' W
Drop Point	1	44° 32.432' N	116° 10.236' W
Drop Point	10	44° 30.592' N	116° 05.806' W
Drop Point	12	44° 32.322' N	116° 07.366' W
Drop Point	15	44° 34.227' N	116° 10.498' W
Drop Point	18	44° 34.092' N	116° 08.864' W
Drop Point	19	44° 28.839' N	116° 12.293' W
Drop Point	2	44° 33.534' N	116° 10.020' W
Drop Point	21	44° 29.775' N	116° 13.699' W
Drop Point	22	44° 29.209' N	116° 14.930' W
Drop Point	3	44° 32.508' N	116° 09.000' W
Drop Point	4	44° 31.797' N	116° 08.227' W
Drop Point	42	44° 31.829' N	116° 11.901' W
Drop Point	71	44° 29.973' N	116° 05.116' W
Helispot	H-1	44° 29.470' N	116° 00.718' W
Helispot	H-15	44° 32.407' N	116° 09.333' W
Helispot	H-2	44° 32.570' N	116° 11.811' W
Helispot	H-23	44° 31.870' N	116° 11.991' W
Helispot	H-51	44° 29.210' N	116° 15.031' W
Helispot	H-54	44° 28.100' N	116° 16.701' W
Helispot	H-74	44° 28.290' N	116° 09.511' W
Helispot	H-78	44° 29.090' N	116° 09.248' W
Helispot	H-81	44° 29.060' N	116° 08.141' W
Incident Command Post	4-Bit RAWs	44° 28.463' N	116° 03.443' W
Mobile Weather Unit	North RAWs	44° 29.160' N	116° 15.001' W
Mobile Weather Unit	Southwest RAWs	44° 33.550' N	116° 10.467' W
Repeater	AC-Link	44° 29.539' N	116° 08.525' W
Repeater	CMD-7	44° 26.398' N	116° 07.521' W
Repeater	CMD-8	44° 35.918' N	116° 14.950' W
Repeater	CMD-9	44° 26.537' N	116° 05.218' W
Sling Site	Delta Sling 1	44° 32.130' N	116° 09.860' W
Sling Site	Delta Sling 2	44° 28.892' N	116° 10.313' W
Sling Site	Whiskey Sling	44° 32.551' N	116° 10.340' W
Water Source		44° 32.324' N	116° 06.957' W
Water Source		44° 29.837' N	116° 05.649' W
Water Source		44° 28.347' N	116° 04.728' W
Water Source		44° 29.862' N	116° 05.713' W
Water Source		44° 32.346' N	116° 09.211' W
Water Source		44° 33.920' N	116° 09.740' W
Water Source		44° 29.350' N	116° 05.357' W
Water Source		44° 32.300' N	116° 08.894' W
Water Source		44° 29.500' N	116° 05.395' W



GB TEAM 4 GIS
8/25/2022 1634
ACRES FROM IR AND GPS
NORTH AMERICAN 1983 DATUM, LAT/LONG GRID