



FOUR CORNERS

9,201 Ac

Percent Contained

18%

Estimated Cost to Date

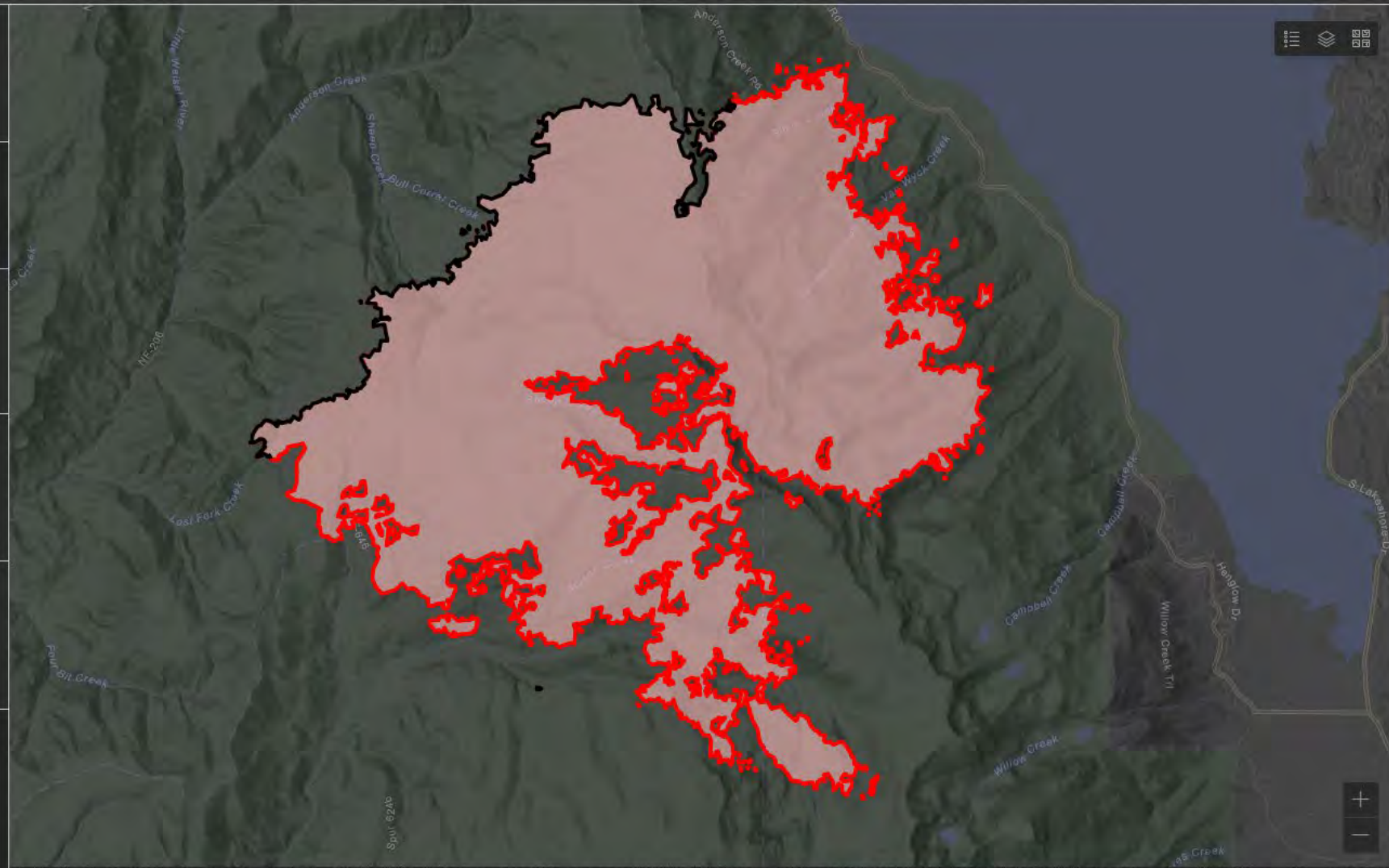
\$13.3M

Total Incident Personnel

762



● USFS 100%



Four Corners Fire - General Weather Outlook

See the IAP for the Official Forecast



Forecast made Friday, August 26 - IMET Mary Wister

Afternoon Conditions	Sat	Sun	Mon	Tue	Wed	Thu
	27-Aug	28-Aug	29-Aug	30-Aug	31-Aug	1-Sep
Clouds @ 1500 (%)	50	10	0	0	0	0
6500 ft Max Temp (F)	68	70	74	78	82	83
Min Humidity (%)	31	24	22	21	18	16
Haines Index	3	3	4	4	5	5
Precip Chance (%)	20	0	0	0	0	0
CWR (>= 0.10")	0	0	0	0	0	0
LAL	1	1	1	1	1	1
Ridge Wind (mph)	15	6	6	5	6	8
Ridge Gusts (mph)	26	10	11	10	11	14
Wind Direction*	SW -> NW	WSW	W	WSW	SW	SW
RH Recovery		Fair	Fair	Fair	Poor	Poor
Do not use this Matrix after Saturday 8/27						

KEY:

Moderate Burning Conditions

Elevated Burning Conditions

Extreme Burning Conditions

Clouds	> 31 %	0 to 30 %	
Avg Max Temp	< 76 F	75 to 79 F	80 F or warmer
Precip Chance	50 % or greater	0 to 49 %	
RH Recovery	56% or greater	41%-55%	40% or less
Ridge Wind	Less than 13 mph	13 to 19 mph	20 mph or more
*Wind Direction	Criticality of wind direction highly dependent on burn operations and/or structures threatened		
Min Humidity	30% or more	25 to 29 %	24% or less
Haines Index	2, 3, 4	5	6

4 extreme blocks in a day signals potential for a Critical Weather

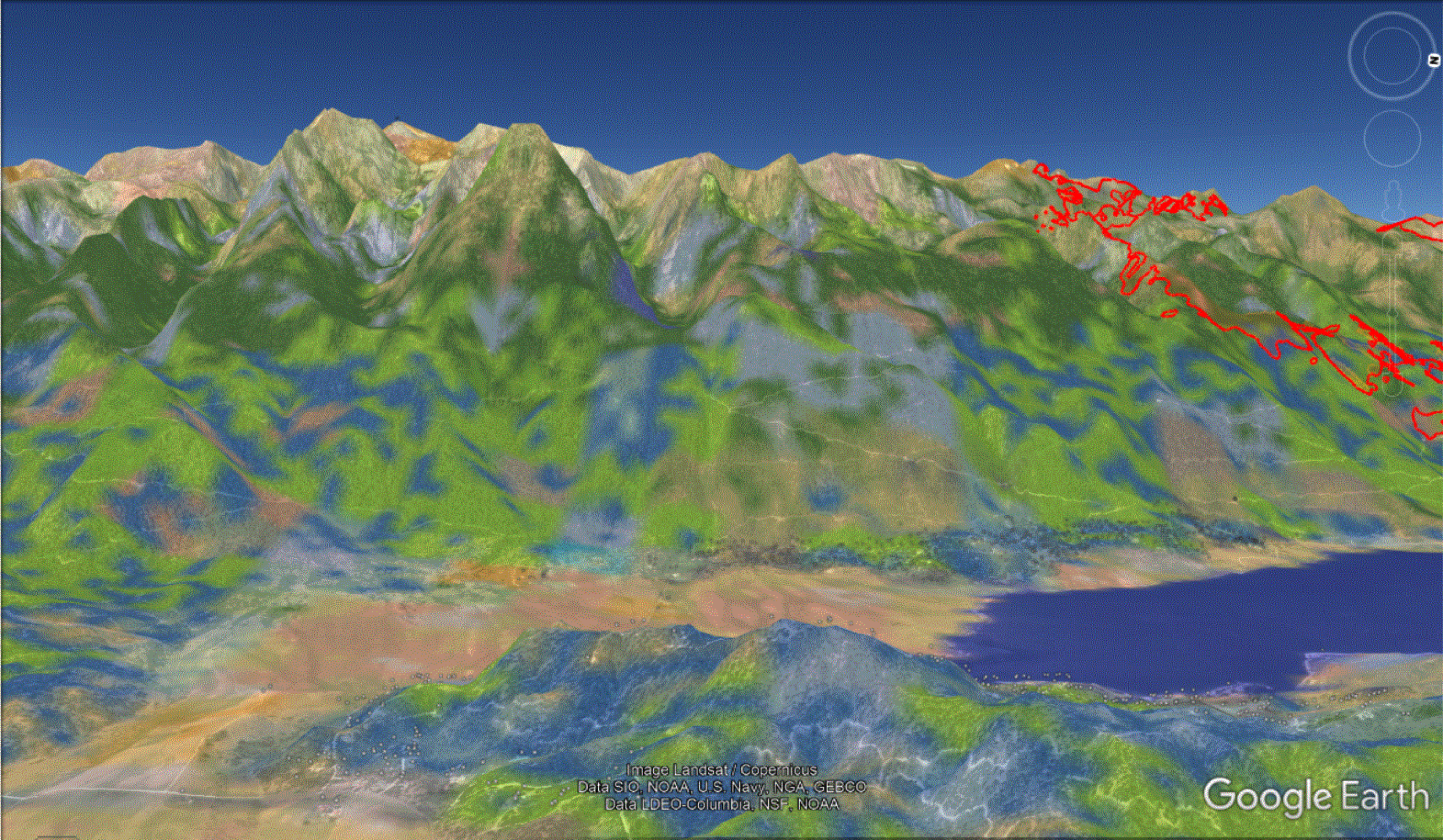


Image Landsat / Copernicus
Data SIO, NOAA, U.S. Navy, NGA, GEBCO
Data LDEO-Columbia, NSF, NOAA

Google Earth

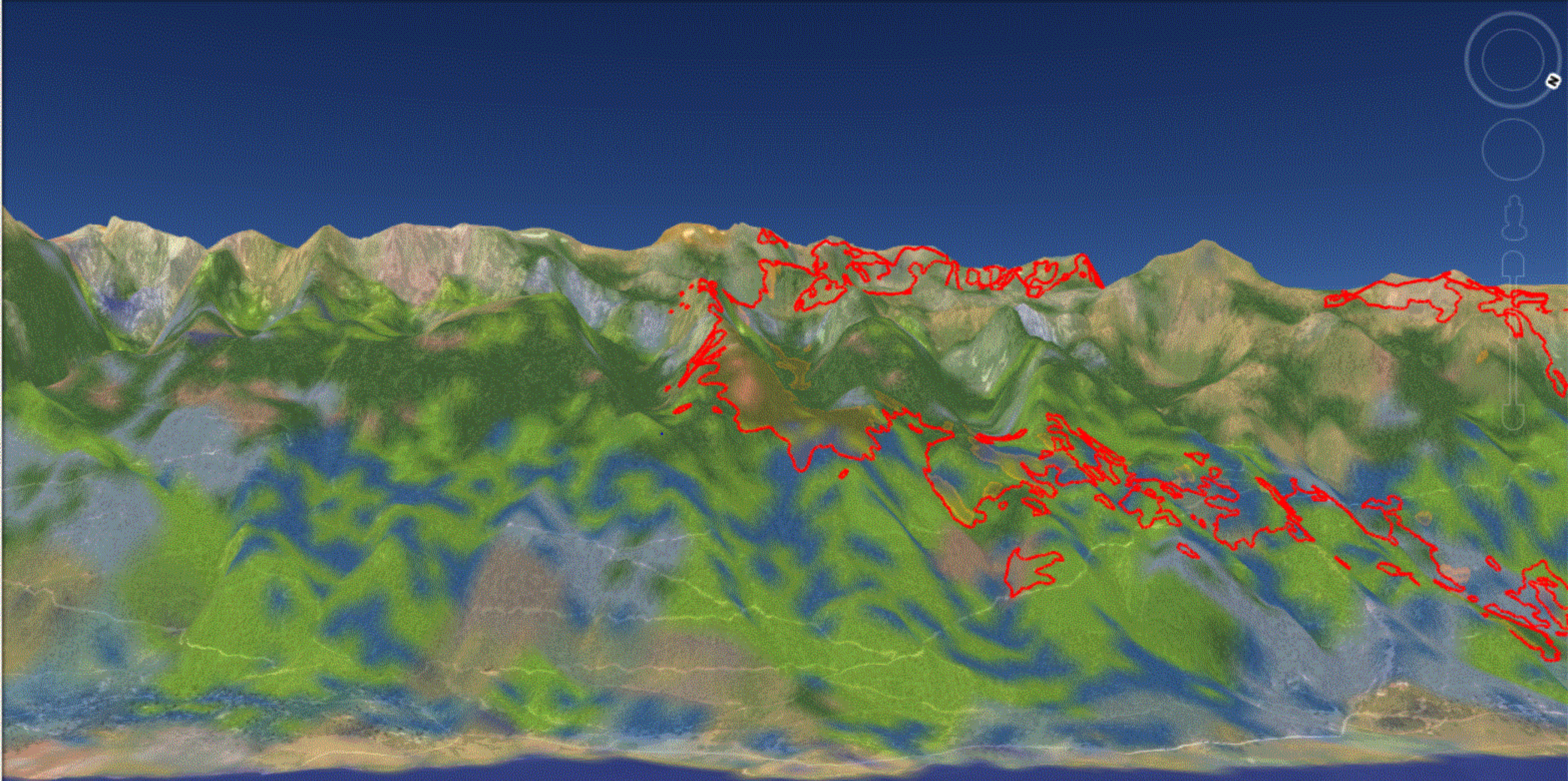


Image Landsat / Copernicus
Data SIO, NOAA, U.S. Navy, NGA, GEBCO
Data LDEO-Columbia, NSF, NOAA

Google Earth

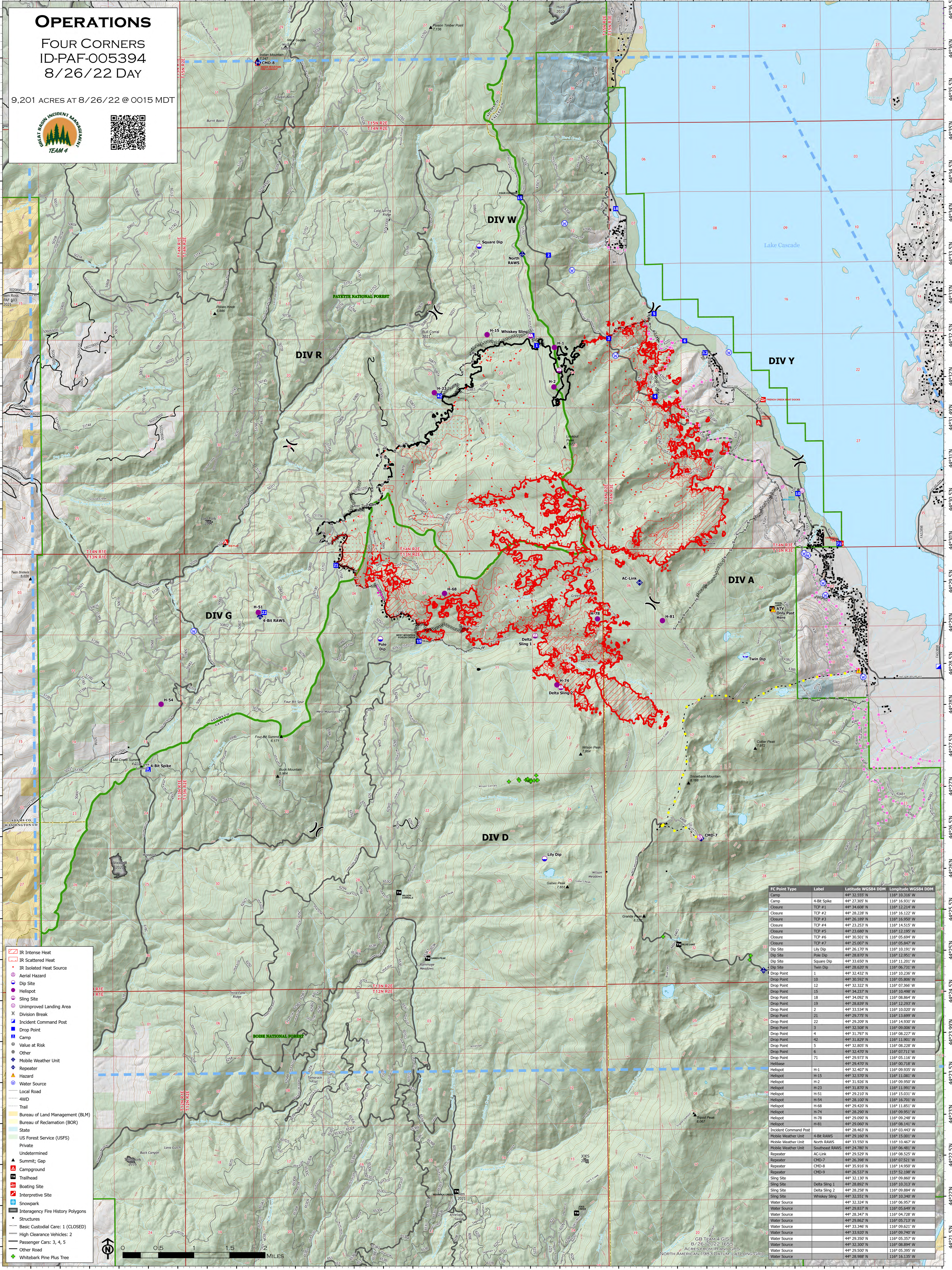
1985

Imagery Date: 8/2/2019 eye alt 18163 ft

OPERATIONS

FOUR CORNERS ID-PAF-005394 8/26/22 DAY

9,201 ACRES AT 8/26/22 @ 0015 MDT



- IR Intense Heat
- IR Scattered Heat
- IR Isolated Heat Source
- Aerial Hazard
- Dip Site
- Helispot
- Sling Site
- Unimproved Landing Area
- Division Break
- Incident Command Post
- Drop Point
- Camp
- Value at Risk
- Other
- Mobile Weather Unit
- Repeater
- Hazard
- Water Source
- Local Road
- 4WD
- Trail
- Bureau of Land Management (BLM)
- Bureau of Reclamation (BOR)
- State
- US Forest Service (USFS)
- Private
- Undetermined
- Summit, Gap
- Campground
- Trailhead
- Boating Site
- Interpretive Site
- Snowpark
- Interagency Fire History Polygons
- Structures
- Basic Custodial Care: 1 (CLOSED)
- High Clearance Vehicles: 2
- Passenger Cars: 3, 4, 5
- Other Road
- Whitebark Pine Plus Tree



FC Point Type	Label	Latitude WGS84 DDM	Longitude WGS84 DDM
Camp	4-Bit Spike	44° 27 305 N	116° 16 931 W
Closure	TCP #1	44° 28 608 N	116° 12 214 W
Closure	TCP #2	44° 28 228 N	116° 16 122 W
Closure	TCP #3	44° 26 189 N	116° 16 950 W
Closure	TCP #4	44° 23 253 N	116° 14 515 W
Closure	TCP #5	44° 28 688 N	116° 12 685 W
Closure	TCP #6	44° 20 501 N	116° 05 694 W
Closure	TCP #7	44° 25 007 N	116° 05 847 W
Dip Site	Lily Dip	44° 26 170 N	116° 10 191 W
Dip Site	Pole Dip	44° 28 870 N	116° 12 951 W
Dip Site	Square Dip	44° 33 650 N	116° 11 201 W
Drop Point	Twin Dip	44° 28 620 N	116° 06 721 W
Drop Point	1	44° 22 432 N	116° 10 236 W
Drop Point	10	44° 30 592 N	116° 05 808 W
Drop Point	12	44° 32 322 N	116° 07 366 W
Drop Point	15	44° 34 237 N	116° 10 498 W
Drop Point	18	44° 34 092 N	116° 08 864 W
Drop Point	19	44° 28 839 N	116° 12 293 W
Drop Point	2	44° 33 534 N	116° 10 620 W
Drop Point	21	44° 29 775 N	116° 13 699 W
Drop Point	22	44° 29 209 N	116° 14 930 W
Drop Point	3	44° 32 508 N	116° 09 006 W
Drop Point	4	44° 31 797 N	116° 08 227 W
Drop Point	42	44° 31 829 N	116° 11 901 W
Drop Point	5	44° 32 809 N	116° 08 208 W
Drop Point	6	44° 32 470 N	116° 07 711 W
Drop Point	71	44° 29 972 N	116° 05 116 W
Helibase		44° 29 470 N	116° 00 718 W
Helispot	H-1	44° 32 407 N	116° 09 935 W
Helispot	H-35	44° 32 570 N	116° 11 081 W
Helispot	H-2	44° 31 928 N	116° 09 950 W
Helispot	H-23	44° 31 870 N	116° 11 901 W
Helispot	H-51	44° 29 210 N	116° 15 031 W
Helispot	H-54	44° 28 100 N	116° 16 701 W
Helispot	H-68	44° 29 420 N	116° 11 851 W
Helispot	H-74	44° 28 290 N	116° 09 951 W
Helispot	H-78	44° 29 090 N	116° 09 950 W
Helispot	H-81	44° 29 060 N	116° 08 141 W
Incident Command Post		44° 28 463 N	116° 03 443 W
Mobile Weather Unit	4-Bit RAWs	44° 29 160 N	116° 15 001 W
Mobile Weather Unit	North RAWs	44° 33 550 N	116° 10 467 W
Mobile Weather Unit	Southeast RAWs	44° 24 780 N	116° 06 481 W
Repeater	AC-Link	44° 29 529 N	116° 08 523 W
Repeater	CMD-7	44° 26 398 N	116° 07 521 W
Repeater	CMD-8	44° 35 916 N	116° 14 950 W
Repeater	CMD-9	44° 26 537 N	116° 52 198 W
Sling Site		44° 32 130 N	116° 09 860 W
Sling Site	Delta Sling 1	44° 28 892 N	116° 10 313 W
Sling Site	Delta Sling 2	44° 28 296 N	116° 09 894 W
Sling Site	Whiskey Sling	44° 33 920 N	116° 13 862 W
Water Source		44° 32 324 N	116° 06 957 W
Water Source		44° 29 837 N	116° 05 649 W
Water Source		44° 28 347 N	116° 04 728 W
Water Source		44° 29 862 N	116° 05 713 W
Water Source		44° 33 346 N	116° 09 621 W
Water Source		44° 33 920 N	116° 05 740 W
Water Source		44° 29 350 N	116° 05 357 W
Water Source		44° 32 300 N	116° 08 894 W
Water Source		44° 29 500 N	116° 05 395 W
Water Source		44° 28 988 N	116° 16 135 W

GB TEAM 4 GIS
8/26/2022 1655
ACRES FROM IR AND GPS
NORTH AMERICAN 1983 DATUM, LAT/LONG GRID