



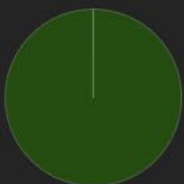
# FOUR CORNERS

10,179 Ac

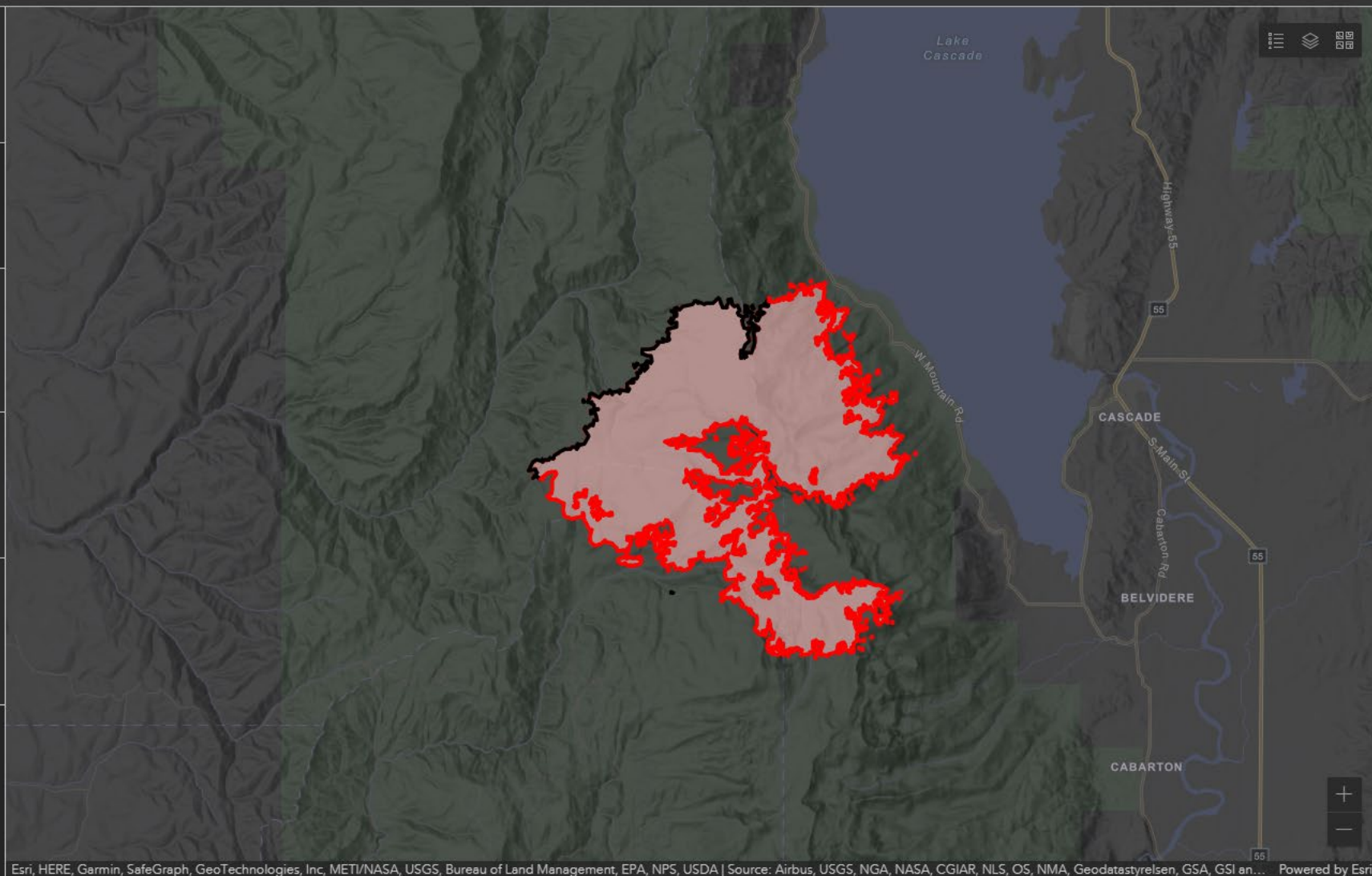
Percent Contained  
**18%**

Estimated Cost to Date  
**\$15.2M**

Total Incident Personnel  
**768**



● USFS 100%



# Four Corners Fire - General Weather Outlook

See the IAP for the Official Forecast



Forecast made Saturday, August 27 - IMET Mary Wister

Afternoon Conditions	Sun	Mon	Tue	Wed	Thu	Fri
	28-Aug	29-Aug	30-Aug	31-Aug	1-Sep	2-Sep
Clouds @ 1500 (%)	20	20	30	0	10	40
6500 ft Max Temp (F)	70	77	80	82	83	80
Min Humidity (%)	24	22	19	17	16	19
Haines Index	3	4	4	5	5	4
Precip Chance (%)	0	0	0	0	10	30
CWR (>= 0.10")	0	0	0	0	0	20
LAL	1	1	1	1	1	2
Ridge Wind (mph)	6	4	5	6	8	10
Ridge Gusts (mph)	10	9	12	12	14	20
Wind Direction*	WSW	WSW	SW	SSW	SW	SW
RH Recovery	Fair	Poor	Poor	Poor	Poor	Poor
Do not use this Matrix after Sunday 8/28						

**KEY:**

Moderate Burning Conditions	Elevated Burning Conditions	Extreme Burning Conditions
-----------------------------	-----------------------------	----------------------------

Clouds	> 31 %	0 to 30 %	80 F or warmer
Avg Max Temp	< 76 F	75 to 79 F	
Precip Chance	50 % or greater	0 to 49 %	40% or less
RH Recovery	56% or greater	41%-55%	20 mph or more
Ridge Wind	Less than 13 mph	13 to 19 mph	
*Wind Direction	Criticality of wind direction highly dependent on burn operations and/or structures threatened		
Min Humidity	30% or more	25 to 29 %	24% or less
Haines Index	2, 3, 4	5	6

4 extreme blocks in a day signals potential for a Critical Weather Day

# OPERATIONS

FOUR CORNERS  
ID-PAF-005394  
8/27/22 DAY

10,179 ACRES AT 8/26/22 @ 2318 MDT



- IR Intense Heat
- IR Scattered Heat
- IR Isolated Heat Source
- Aerial Hazard
- Dip Site
- Helispot
- Sling Site
- Unimproved Landing Area
- Division Break
- Incident Command Post
- Drop Point
- Camp
- Value at Risk
- Other
- Mobile Weather Unit
- Repeater
- Hazard
- Water Source
- Local Connector
- Local Road
- 4WD
- Trail
- Bureau of Land Management (BLM)
- Bureau of Reclamation (BOR)
- State
- US Forest Service (USFS)
- Private; Undetermined
- Summit; Gap
- Ranger District Office
- Campground
- Trailhead
- Boating Site
- Interpretive Site
- Snowpark
- Interagency Fire History Polygons
- Structures
- Basic Custodial Care: 1 (CLOSED)
- High Clearance Vehicles: 2
- Passenger Cars: 3, 4, 5
- Other Road
- Whitebark Pine

FC Point Type	Label	Latitude WGS84 DDM	Longitude WGS84 DDM
Camp	4-Bit Spike	44° 32.555' N	116° 10.316' W
Closure	TCP #1	44° 34.658' N	116° 12.218' W
Closure	TCP #2	44° 28.228' N	116° 16.122' W
Closure	TCP #3	44° 26.189' N	116° 16.950' W
Closure	TCP #4	44° 23.253' N	116° 14.515' W
Closure	TCP #5	44° 23.680' N	116° 12.195' W
Closure	TCP #6	44° 30.501' N	116° 05.694' W
Closure	TCP #7	44° 25.929' N	116° 08.987' W
Dip Site	Lily Dip	44° 26.170' N	116° 10.191' W
Dip Site	Pole Dip	44° 28.870' N	116° 12.951' W
Dip Site	Snowbank Dip	44° 27.470' N	116° 07.381' W
Dip Site	Square Dip	44° 33.650' N	116° 11.201' W
Dip Site	Twin Dip	44° 28.620' N	116° 06.731' W
Drop Point	1	44° 30.592' N	116° 08.806' W
Drop Point	10	44° 32.322' N	116° 07.366' W
Drop Point	12	44° 34.237' N	116° 10.498' W
Drop Point	15	44° 34.092' N	116° 08.864' W
Drop Point	18	44° 28.839' N	116° 12.293' W
Drop Point	19	44° 30.805' N	116° 08.288' W
Drop Point	21	44° 29.775' N	116° 13.690' W
Drop Point	22	44° 29.209' N	116° 14.930' W
Drop Point	3	44° 32.508' N	116° 09.006' W
Drop Point	4	44° 31.797' N	116° 08.227' W
Drop Point	42	44° 31.829' N	116° 11.901' W
Drop Point	5	44° 32.470' N	116° 07.711' W
Drop Point	6	44° 32.470' N	116° 07.711' W
Drop Point	71	44° 29.973' N	116° 05.116' W
Helibase	H-1	44° 29.470' N	116° 00.718' W
Helispot	H-1	44° 32.407' N	116° 09.935' W
Helispot	H-15	44° 32.570' N	116° 11.081' W
Helispot	H-2	44° 30.826' N	116° 09.884' W
Helispot	H-23	44° 31.870' N	116° 11.991' W
Helispot	H-51	44° 29.210' N	116° 15.031' W
Helispot	H-54	44° 28.100' N	116° 16.701' W
Helispot	H-68	44° 29.420' N	116° 11.851' W
Helispot	H-74	44° 28.290' N	116° 09.951' W
Helispot	H-76	44° 27.888' N	116° 09.748' W
Helispot	H-78	44° 29.240' N	116° 09.884' W
Helispot	H-81	44° 29.060' N	116° 08.141' W
Incident Command Post	4-Bit RAWs	44° 28.463' N	116° 03.443' W
Mobile Weather Unit	North RAWs	44° 29.160' N	116° 15.001' W
Mobile Weather Unit	South RAWs	44° 33.550' N	116° 10.467' W
Mobile Weather Unit	Southeast RAWs	44° 24.780' N	116° 06.481' W
Repeater	CMD-8	44° 26.398' N	116° 07.521' W
Repeater	CMD-9	44° 26.537' N	116° 05.198' W
Sling Site	Delta Sling 1	44° 28.892' N	116° 10.313' W
Sling Site	Delta Sling 2	44° 28.258' N	116° 09.884' W
Sling Site	Whiskey Sling	44° 32.551' N	116° 10.340' W
Water Source		44° 32.324' N	116° 06.957' W
Water Source		44° 29.837' N	116° 05.649' W
Water Source		44° 28.347' N	116° 04.728' W
Water Source		44° 29.862' N	116° 05.713' W
Water Source		44° 33.340' N	116° 09.621' W
Water Source		44° 33.920' N	116° 09.740' W
Water Source		44° 29.350' N	116° 05.357' W
Water Source		44° 32.300' N	116° 08.894' W
Water Source		44° 29.500' N	116° 05.399' W
Water Source		44° 28.888' N	116° 16.135' W

