



Four Corners Fire Dashboard

Updated daily @ 1800

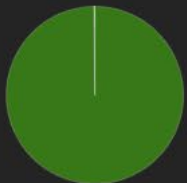
FOUR CORNERS

11,345 Ac

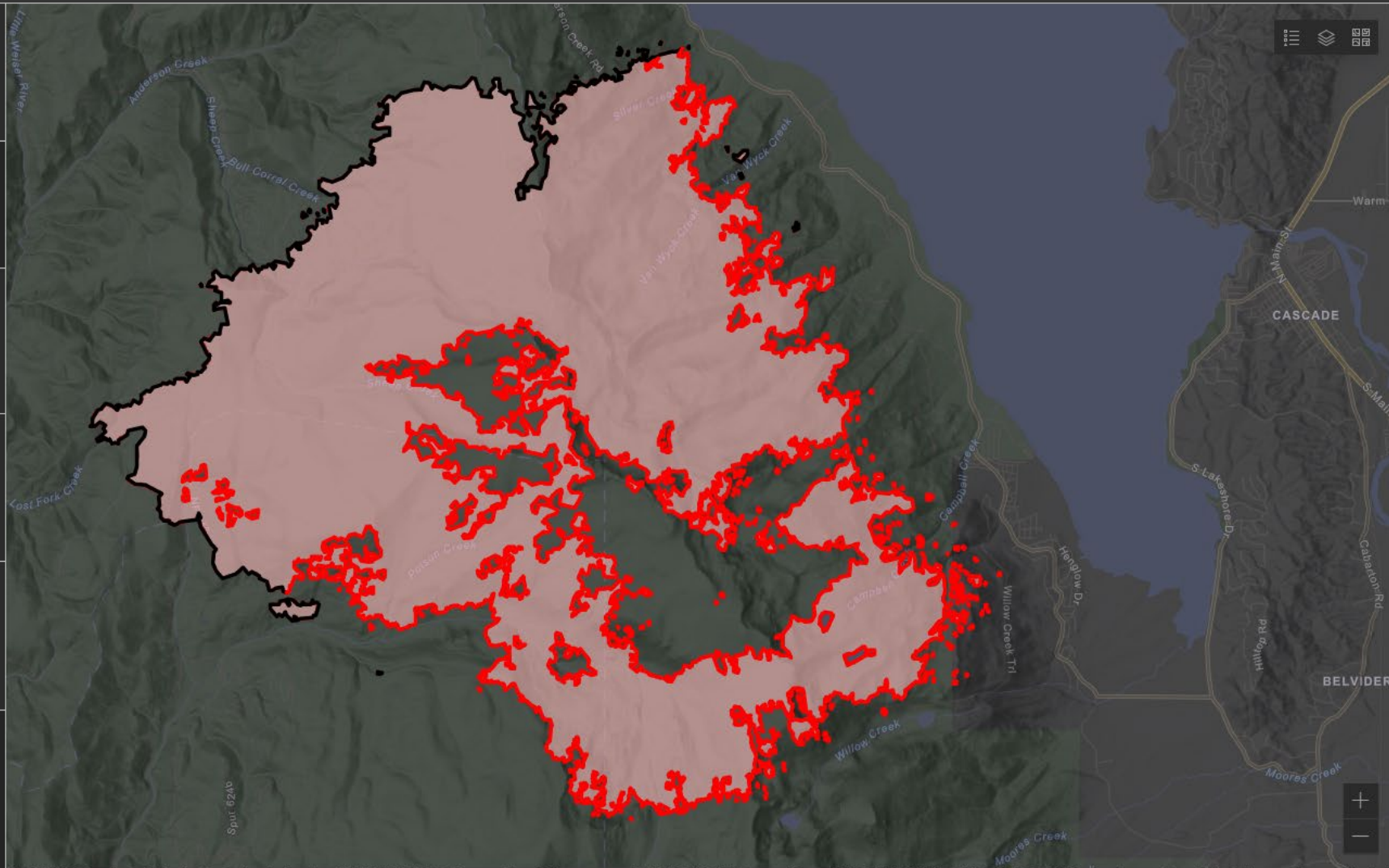
Percent Contained
24%

Estimated Cost to Date
\$17.1M

Total Incident Personnel
756



- USFS 99.9%
- PVT 0.1%



Four Corners Fire - General Weather Outlook

See the IAP for the Official Forecast



Forecast made Sunday, August 28 - IMET Trainee Steven Van Horn

Afternoon Conditions	Mon	Tue	Wed	Thu	Fri	Sat
	29-Aug	30-Aug	31-Aug	1-Sep	2-Sep	3-Sep
Clouds @ 1500 (%)	0	30	10	0	10	20
6500 ft Max Temp (F)	77	81	84	84	83	80
Min Humidity (%)	22	19	17	16	15	20
Haines Index	3	4	5	5	5	5
Precip Chance (%)	0	0	0	0	0	0
CWR (>= 0.10")	0	0	0	0	0	0
LAL	1	1	1	1	1	1
Ridge Wind (mph)	5	6	8	8	12	7
Ridge Gusts (mph)	11	12	15	15	20	14
Wind Direction*	W	W	SW	SW	SW	WSW
RH Recovery		Poor	Poor	Poor	Poor	Poor
Do not use this Matrix after Monday 8/29						

KEY:

Moderate Burning Conditions

Elevated Burning Conditions

Extreme Burning Conditions

Clouds	> 31 %	0 to 30 %	80 F or warmer
Avg Max Temp	< 76 F	75 to 79 F	
Precip Chance	50 % or greater	0 to 49 %	
RH Recovery	56% or greater	41%-55%	40% or less
Ridge Wind	Less than 13 mph	13 to 19 mph	20 mph or more
*Wind Direction	Criticality of wind direction highly dependent on burn operations and/or structures threatened		
Min Humidity	30% or more	25 to 29 %	24% or less
Haines Index	2, 3, 4	5	6

4 extreme blocks in a day signals potential for a Critical Weather

OPERATIONS

FOUR CORNERS
ID-PAF-005394
8/28/22 DAY

11,345 ACRES AT 8/27/22 @ 2158 MDT



- IR Intense Heat
- IR Scattered Heat
- IR Isolated Heat Source
- Aerial Hazard
- Dip Site
- Helispot
- Sling Site
- Unimproved Landing Area
- Division Break
- Incident Command Post
- Drop Point
- Camp
- Value at Risk
- Other
- Mobile Weather Unit
- Repeater
- Hazard
- Water Source
- Restricted Water Source
- Local Connector
- Local Road
- 4WD
- Trail
- Bureau of Land Management (BLM)
- Bureau of Reclamation (BOR)
- State
- US Forest Service (USFS)
- Private; Undetermined
- Summit; Gap
- Ranger District Office
- Campground
- Trailhead
- Boating Site
- Interpretive Site
- Snowpark
- Interagency Fire History Polygons
- Structures
- Basic Custodial Care: 1 (CLOSED)
- High Clearance Vehicles: 2
- Passenger Cars: 3, 4, 5
- Other Road
- Whitebark Pine

FC Point Type	Label	Latitude WGS84 DDM	Longitude WGS84 DDM
Camp		44° 32.555' N	116° 10.316' W
Camp	4-Bit Spike	44° 27.305' N	116° 16.931' W
Closure	TCP #1	44° 34.608' N	116° 12.214' W
Closure	TCP #2	44° 28.228' N	116° 16.127' W
Closure	TCP #3	44° 26.187' N	116° 18.957' W
Closure	TCP #4	44° 23.253' N	116° 14.513' W
Closure	TCP #5	44° 23.680' N	116° 12.195' W
Closure	TCP #6	44° 30.501' N	116° 05.694' W
Closure	TCP #7	44° 25.007' N	116° 05.847' W
Dip Site	Blue Dip		
Dip Site	Lily Dip	44° 26.170' N	116° 10.191' W
Dip Site	Pole Dip	44° 28.879' N	116° 12.951' W
Dip Site	Snowbank Dip	44° 27.470' N	116° 07.381' W
Dip Site	Square Dip	44° 33.650' N	116° 11.201' W
Dip Site	Twin Dip	44° 28.620' N	116° 06.731' W
Dip Site	Willow Dip		
Drop Point	1	44° 32.432' N	116° 10.236' W
Drop Point	10	44° 30.592' N	116° 09.892' W
Drop Point	12	44° 32.322' N	116° 07.366' W
Drop Point	15	44° 34.237' N	116° 10.498' W
Drop Point	18	44° 34.092' N	116° 08.864' W
Drop Point	19	44° 28.839' N	116° 12.293' W
Drop Point	2	44° 33.534' N	116° 10.020' W
Drop Point	21	44° 32.805' N	116° 09.228' W
Drop Point	22	44° 29.205' N	116° 14.937' W
Drop Point	23	44° 29.352' N	116° 12.886' W
Drop Point	3	44° 32.508' N	116° 09.006' W
Drop Point	4	44° 31.797' N	116° 08.227' W
Drop Point	42	44° 31.829' N	116° 11.901' W
Drop Point	5	44° 32.805' N	116° 09.228' W
Drop Point	6	44° 32.402' N	116° 07.211' W
Drop Point	71	44° 29.973' N	116° 05.116' W
Helispot	H-1	44° 29.470' N	116° 00.718' W
Helispot	H-15	44° 32.407' N	116° 09.935' W
Helispot	H-15	44° 32.570' N	116° 11.081' W
Helispot	H-2	44° 31.926' N	116° 09.950' W
Helispot	H-23	44° 31.990' N	116° 11.990' W
Helispot	H-51	44° 29.210' N	116° 15.031' W
Helispot	H-54	44° 28.100' N	116° 16.701' W
Helispot	H-68	44° 29.420' N	116° 11.851' W
Helispot	H-74	44° 28.290' N	116° 09.951' W
Helispot	H-76	44° 27.288' N	116° 09.716' W
Helispot	H-78	44° 29.092' N	116° 09.246' W
Helispot	H-81	44° 29.060' N	116° 08.141' W
Incident Command Post		44° 28.463' N	116° 03.443' W
Mobile Weather Unit	4-Bit RAWs	44° 29.160' N	116° 15.001' W
Mobile Weather Unit	North RAWs	44° 33.550' N	116° 10.467' W
Mobile Weather Unit	Southeast RAWs	44° 24.780' N	116° 06.481' W
Repeater	AC-Link	44° 29.525' N	116° 09.525' W
Repeater	CMD-7	44° 26.398' N	116° 07.521' W
Repeater	CMD-8	44° 35.916' N	116° 14.950' W
Repeater	CMD-9	44° 26.537' N	115° 52.198' W
Restricted Water Source	No Dipping		
Sling Site		44° 32.130' N	116° 09.860' W
Sling Site	Diels Sling 1	44° 28.966' N	116° 08.313' W
Sling Site	Whiskey Sling	44° 32.551' N	116° 10.340' W
Water Source		44° 32.324' N	116° 06.957' W
Water Source		44° 29.837' N	116° 05.649' W
Water Source		44° 28.347' N	116° 04.728' W
Water Source		44° 29.862' N	116° 05.713' W
Water Source		44° 33.946' N	116° 09.622' W
Water Source		44° 33.907' N	116° 09.740' W
Water Source		44° 29.350' N	116° 05.357' W
Water Source		44° 32.300' N	116° 08.894' W
Water Source		44° 29.500' N	116° 05.395' W
Water Source		44° 28.988' N	116° 16.135' W

