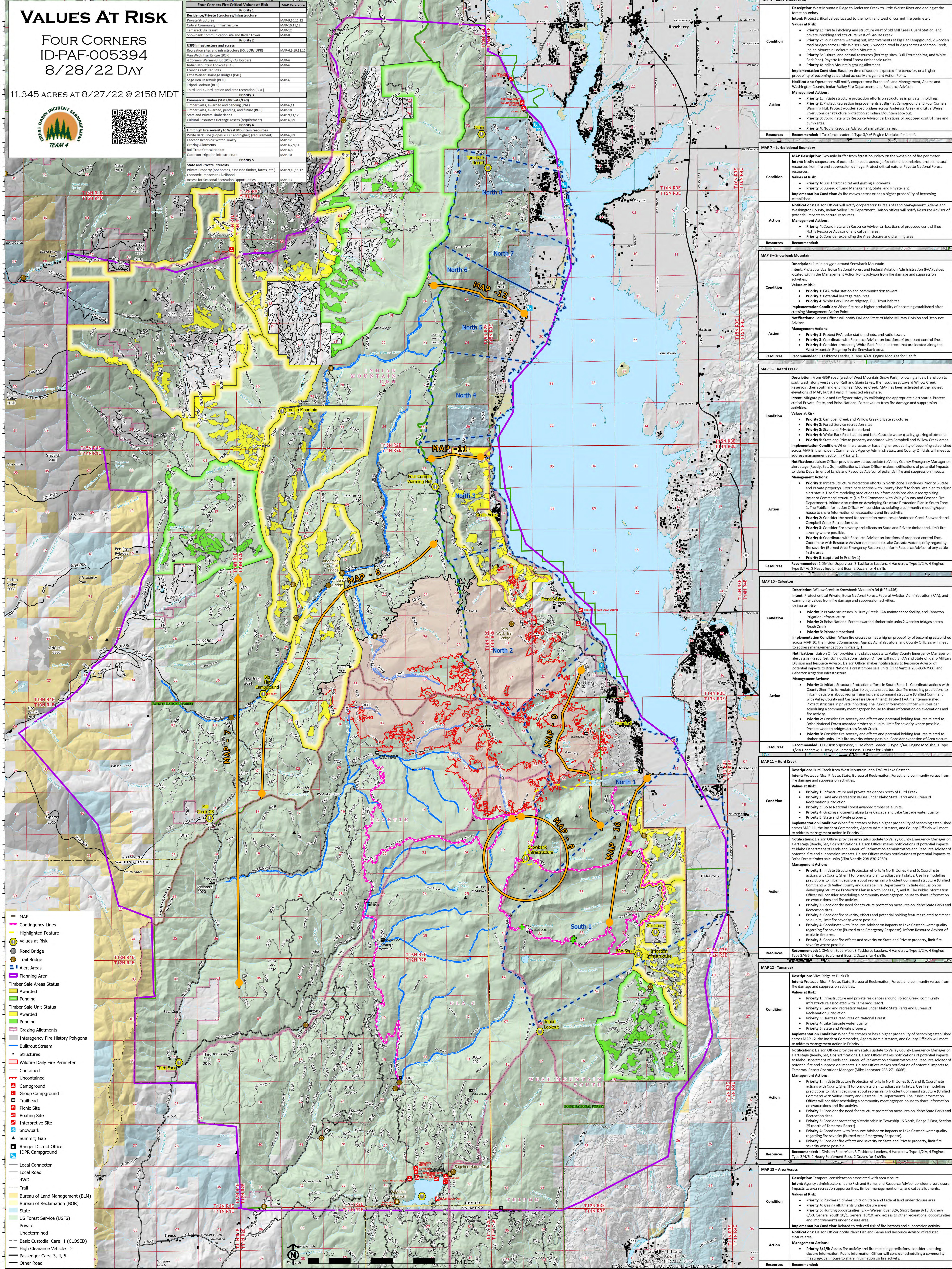


# VALUES AT RISK

## FOUR CORNERS ID-PAF-005394 8/28/22 DAY

11,345 ACRES AT 8/27/22 @ 2158 MDT

Priority	MAP Reference
<b>Priority 1</b>	
Residence/Private Structures/Infrastructure	MAP-9,10,11,12
Private Structures	MAP-9,10,11,12
Critical Community Infrastructure	MAP-10,11,12
Tamarack Ski Resort	MAP-12
Snowbank Communication site and Radar Tower	MAP-8
<b>Priority 2</b>	
USFS Infrastructure and access	MAP-6,9,10,11,12
Recreation sites and infrastructure (FS, BOR/IDPR)	MAP-6,9,10,11,12
Van Wyck Trail Bridge (BOF)	MAP-6
4 Corners Warming Hut (PAF border)	MAP-6
Indian Mountain Lookout (PAF)	MAP-6
French Creek Rec Sites	MAP-6
White Water Drainage Bridges (PAF)	MAP-6
Sage Hen Reservoir (BOF)	MAP-6
Tripod Lookout (BOF)	MAP-6
Third Fork Guard Station and area recreation (BOF)	MAP-6
<b>Priority 3</b>	
Commercial Timber (State/Private/Fed)	MAP-6,11
Timber Sales, awarded and pending (PAF)	MAP-10
Timber Sales, awarded, pending, and future (BOF)	MAP-10
State and Private Timberlands	MAP-9,11,12
Cultural Resources Heritage Areas (Equipment)	MAP-6,8,9
<b>Priority 4</b>	
Limit high fire severity to West Mountain resources	MAP-6,8,9
White Bark Pine (slopes 7000' and higher) (equipment)	MAP-12
Catchment Reservoir Water Quality	MAP-12
Grazing Allotments	MAP-6,7,9,11
Bull Trout Critical Habitat	MAP-8
Champlain Irrigation Infrastructure	MAP-10
<b>Priority 5</b>	
State and Private interests	MAP-9,10,11,12
Private Property (not homes, assessed timber, farms, etc.)	MAP-13
Economic Impacts to Livelihood	MAP-13
Access for Seasonal Recreation Opportunities	MAP-13



- MAP
- Contingency Lines
- Highlighted Feature
- Values at Risk
- Road Bridge
- Trail Bridge
- Alert Areas
- Planning Area
- Timber Sale Areas Status
- Awarded
- Pending
- Timber Sale Unit Status
- Awarded
- Pending
- Grazing Allotments
- Interagency Fire History Polygons
- Bullroft Stream
- Structures
- Wildfire Daily Fire Perimeter
- Contained
- Uncontained
- Campground
- Group Campground
- Trailhead
- Picnic Site
- Boating Site
- Interpretive Site
- Snowpark
- Summit; Gap
- Ranger District Office
- IDPR Campground
- Local Connector
- Local Road
- 4WD
- Trail
- Bureau of Land Management (BLM)
- Bureau of Reclamation (BOR)
- State
- US Forest Service (USFS)
- Private
- Undetermined
- Basic Custodial Care: 1 (CLOSED)
- High Clearance Vehicles: 2
- Passenger Cars: 3, 4, 5
- Other Road

### MAP 6 - Little Weiser River

**Description:** West Mountain Ridge to Anderson Creek to Little Weiser River and ending at the forest boundary

**Intent:** Protect critical values located to the north and west of current fire perimeter.

**Values at Risk:**

- Priority 1: Private inholding and structure west of old Mill Creek Guard Station, and private inholding and structure west of Grouse Creek
- Priority 2: Four Corners warming hut, improvements at Big Flat Campground, 2 wooden road bridges across the Little Weiser River, 2 wooden road bridges across Anderson Creek, Indian Mountain Lookout Indian Mountain
- Priority 3: Cultural and natural resources (heritage sites, Bull Trout habitat, and White Bark Pine), Fayette National Forest timber sale units
- Priority 4: Indian Mountain grazing allotment

**Implementation Condition:** Based on time of season, expected fire behavior, or a higher probability of becoming established across Management Action Point

**Notifications:** Operations will notify cooperators: Bureau of Land Management, Adams and Washington County, Indian Valley Fire Department, and Resource Advisor.

**Management Actions:**

- Priority 1: Initiate structure protection efforts on structures in private inholdings.
- Priority 2: Protect recreation improvements at Big Flat Campground and Four Corners Warming Hut. Protect wooden road bridges across Anderson Creek and Little Weiser River. Consider structure protection at Indian Mountain Lookout.
- Priority 3: Coordinate with Resource Advisor on locations of proposed control lines and pump sites.
- Priority 4: Notify Resource Advisor of any cattle in area.

**Resources Recommended:** 1 Taskforce Leader, 4 Type 3/4/6 Engine Modules for 1 shift

### MAP 7 - Jurisdictional Boundary

**Description:** Two-mile buffer from forest boundary on the west side of fire perimeter

**Intent:** Notify cooperators of potential impacts across jurisdictional boundaries, protect natural resources from fire and suppression damage. Protect critical natural Fayette National Forest resources

**Values at Risk:**

- Priority 4: Bull Trout habitat and grazing allotments
- Priority 5: Bureau of Land Management, State, and Private land

**Implementation Condition:** As fire moves across or has a higher probability of becoming established

**Notifications:** Liaison Officer will notify cooperators: Bureau of Land Management, Adams and Washington County, Indian Valley Fire Department. Liaison officer will notify Resource Advisor of potential impacts to natural resources.

**Management Actions:**

- Priority 4: Coordinate with Resource Advisor on locations of proposed control lines. Notify Resource Advisor of any cattle in area.
- Priority 5: Consider expanding the Area closure and planning area.

**Resources Recommended:**

### MAP 8 - Snowbank Mountain

**Description:** 1 mile polygon around Snowbank Mountain

**Intent:** Protect critical Boise National Forest and Federal Aviation Administration (FAA) values located within the Management Action Point polygon from fire damage and suppression activities.

**Values at Risk:**

- Priority 1: FAA radar station and communication towers
- Priority 3: Potential heritage resources
- Priority 4: White Bark Pine habitat at Haggtop, Bull Trout habitat

**Implementation Condition:** When fire crosses or has a higher probability of becoming established after crossing Management Action Point

**Notifications:** Liaison Officer will notify FAA and State of Idaho Military Division and Resource Advisor.

**Management Actions:**

- Priority 1: Protect FAA radar station, sheds, and radio tower.
- Priority 3: Coordinate with Resource Advisor on locations of proposed control lines.
- Priority 4: Coordinate protecting White Bark Pine plus trees that are located along the West Mountain Ridge to the Snowbank area.

**Resources Recommended:** 1 Taskforce Leader, 3 Type 3/4/6 Engine Modules for 1 shift

### MAP 9 - Hazard Creek

**Description:** From 435P road (west of West Mountain Snow Park) following a fuels transition to southwest, along west side of Raft and Stain Lakes, then southeast toward Willow Creek Reservoir, then south and ending at Moore Creek. MAP has been activated at the highest elevations of MAP, but still valid if impacted elsewhere.

**Intent:** Mitigate public and firefighter safety by validating the appropriate alert status. Protect critical Private, State, and Boise National Forest values from fire damage and suppression activities.

**Values at Risk:**

- Priority 1: Campbell Creek and Willow Creek private structures
- Priority 2: Forest Service recreation sites
- Priority 3: State and Private timberland
- Priority 4: White Bark Pine habitat and Lake Cascade water quality; grazing allotments
- Priority 5: State and Private property associated with Campbell and Willow Creek areas

**Implementation Condition:** When fire crosses or has a higher probability of becoming established across MAP 9, the Incident Commander, Agency Administrators, and County Officials will meet to address management action in Priority 1.

**Notifications:** Liaison Officer provides any status update to Valley County Emergency Manager on alert stage (Ready, Set, Go) notifications. Liaison Officer makes notifications of potential impacts to Idaho Department of Lands and Resource Advisor of potential fire and suppression impacts.

**Management Actions:**

- Priority 1: Initiate Structure Protection efforts in North Zone 1 (includes Priority 5 State and Private property). Coordinate actions with County Sheriff to formulate plan to adjust alert status. Use fire modeling predictions to inform decisions about reorganizing Incident Command structure (Unified Command with Valley County and Cascade Fire Department). Initiate discussion on developing Structure Protection Plan in South Zone 1. The Public Information Officer will consider scheduling a community meeting/open house to share information on evacuations and fire activity.
- Priority 2: Consider the need for protection measures at Anderson Creek Snowpark and Campbell Creek Recreation site.
- Priority 3: Consider fire severity and effects on State and Private timberland, limit fire severity where possible.
- Priority 4: Coordinate with Resource Advisor on locations of proposed control lines. Coordinate with Resource Advisor on impacts to Lake Cascade water quality regarding fire severity (Burned Area Emergency Response). Inform Resource Advisor of any cattle in the area.
- Priority 5: (captured in Priority 1)

**Resources Recommended:** 1 Division Supervisor, 3 Taskforce Leaders, 4 Handcrew Type 1/2/4, 4 Engines Type 3/4/5, 2 Heavy Equipment Boats, 2 Dozers for 4 shifts

### MAP 10 - Cabarton

**Description:** Willow Creek to Snowbank Mountain Rd (NFS #846)

**Intent:** Protect critical Private, Boise National Forest, Federal Aviation Administration (FAA), and community values from fire damage and suppression activities.

**Values at Risk:**

- Priority 1: Private structures in Hundt Creek, FAA maintenance facility, and Cabarton irrigation infrastructure
- Priority 2: Boise National Forest awarded timber sale units 2 wooden bridges across Brun Creek
- Priority 3: Private timberland

**Implementation Condition:** When fire crosses or has a higher probability of becoming established across MAP 10, the Incident Commander, Agency Administrator, and County Officials will meet to address management action in Priority 1.

**Notifications:** Liaison Officer provides any status update to Valley County Emergency Manager on alert stage (Ready, Set, Go) notifications. Liaison Officer will notify FAA and State of Idaho Military Division and Resource Advisor. Liaison Officer makes notifications of potential impacts to Boise National Forest timber sale units (Cint Vancle 208-830-7960) and Cabarton irrigation infrastructure.

**Management Actions:**

- Priority 1: Initiate Structure Protection efforts in South Zone 1. Coordinate actions with County Sheriff to formulate plan to adjust alert status. Use fire modeling predictions to inform decisions about reorganizing incident command structure (Unified Command with Valley County and Cascade Fire Department). Initiate discussion on developing Structure Protection Plan in North Zones 6, 7, and 8. The Public Information Officer will consider scheduling a community meeting/open house to share information on evacuations and fire activity.
- Priority 2: Consider fire severity and effects and potential holding features related to Boise National Forest awarded timber sale units, limit fire severity where possible. Protect wooden bridges across Brun Creek. Protect FAA maintenance shed.
- Priority 3: Consider fire severity and effects and potential holding features related to timber sale units, limit fire severity where possible. Consider expansion of Area Closure.

**Resources Recommended:** 1 Division Supervisor, 1 Taskforce Leader, 3 Type 3/4/6 Engine Modules, 1 Type 1/2/4 Handcrew, 1 Heavy Equipment Boat, 1 Dozer for 2 shifts

### MAP 11 - Hurd Creek

**Description:** Hurd Creek from West Mountain Jeep Trail to Lake Cascade

**Intent:** Protect critical Private, State, Bureau of Reclamation, Forest, and community values from fire damage and suppression activities.

**Values at Risk:**

- Priority 1: Infrastructure and private residences north of Hurd Creek
- Priority 2: Land and recreation values under Idaho State Parks and Bureau of Reclamation jurisdiction
- Priority 3: Boise National Forest awarded timber sale units
- Priority 4: Grazing allotments along Lake Cascade and Lake Cascade water quality
- Priority 5: State and Private property

**Implementation Condition:** When fire crosses or has a higher probability of becoming established across MAP 11, the Incident Commander, Agency Administrators, and County Officials will meet to address management action in Priority 1.

**Notifications:** Liaison Officer provides any status update to Valley County Emergency Manager on alert stage (Ready, Set, Go) notifications. Liaison Officer makes notifications of potential impacts to Idaho Department of Lands and Bureau of Reclamation administrators and Resource Advisor of potential fire and suppression impacts. Liaison Officer makes notifications of potential impacts to Boise Forest timber sale units (Cint Vancle 208-830-7960).

**Management Actions:**

- Priority 1: Initiate Structure Protection efforts in North Zones 4 and 5. Coordinate actions with County Sheriff to formulate plan to adjust alert status. Use fire modeling predictions to inform decisions about reorganizing Incident Command structure (Unified Command with Valley County and Cascade Fire Department). Initiate discussion on developing Structure Protection Plan in North Zones 6, 7, and 8. The Public Information Officer will consider scheduling a community meeting/open house to share information on evacuations and fire activity.
- Priority 2: Consider the need for structure protection measures on Idaho State Parks and Recreation sites.
- Priority 3: Consider fire severity, effects and potential holding features related to timber sale units, limit fire severity where possible.
- Priority 4: Coordinate with Resource Advisor on impacts to Lake Cascade water quality regarding fire severity (Burned Area Emergency Response). Inform Resource Advisor of any cattle in fire area.
- Priority 5: Consider fire effects and severity on State and Private property, limit fire severity where possible.

**Resources Recommended:** 1 Division Supervisor, 3 Taskforce Leaders, 4 Handcrew Type 1/2/4, 4 Engines Type 3/4/5, 2 Heavy Equipment Boats, 2 Dozers for 4 shifts

### MAP 12 - Tamarack

**Description:** Mica Ridge to Duck Creek

**Intent:** Protect critical Private, State, Bureau of Reclamation, Forest, and community values from fire damage and suppression activities.

**Values at Risk:**

- Priority 1: Infrastructure and private residences around Poison Creek, community infrastructure associated with Tamarack Resort
- Priority 2: Land and recreation values under Idaho State Parks and Bureau of Reclamation jurisdiction
- Priority 3: Heritage resources on National Forest
- Priority 4: Lake Cascade water quality
- Priority 5: State and Private property

**Implementation Condition:** When fire crosses or has a higher probability of becoming established across MAP 12, the Incident Commander, Agency Administrators, and County Officials will meet to address management action in Priority 1.

**Notifications:** Liaison Officer provides any status update to Valley County Emergency Manager on alert stage (Ready, Set, Go) notifications. Liaison Officer makes notifications of potential impacts to Idaho Department of Lands and Bureau of Reclamation administrators and Resource Advisor of potential fire and suppression impacts. Liaison Officer makes notification of potential impacts to Tamarack Resort Operations Manager (Mike Lancaster 208-271-6065).

**Management Actions:**

- Priority 1: Initiate Structure Protection efforts in North Zones 6, 7, and 8. Coordinate actions with County Sheriff to formulate plan to adjust alert status. Use fire modeling predictions to inform decisions about reorganizing Incident Command structure (Unified Command with Valley County and Cascade Fire Department). The Public Information Officer will consider scheduling a community meeting/open house to share information on evacuations and fire activity.
- Priority 2: Consider the need for structure protection measures on Idaho State Parks and Recreation sites.
- Priority 3: Consider protecting historic cabin in Township 16 North Range 2 East, Section 25 (north of Tamarack Resort).
- Priority 4: Coordinate with Resource Advisor on impacts to Lake Cascade water quality regarding fire severity (Burned Area Emergency Response).
- Priority 5: Consider fire effects and severity on State and Private property, limit fire severity where possible.

**Resources Recommended:** 1 Division Supervisor, 3 Taskforce Leaders, 4 Handcrew Type 1/2/4, 4 Engines Type 3/4/5, 2 Heavy Equipment Boats, 2 Dozers for 4 shifts

### MAP 13 - Area Access

**Description:** Temporal consideration associated with area closure

**Intent:** Agency administrators, Idaho Fish and Game, and Resource Advisor consider area closure impacts to area recreation opportunities, timber management units, and cattle allotments.

**Values at Risk:**

- Priority 3: Purchased timber units on State and Federal land under closure area
- Priority 4: grazing allotments under closure area
- Priority 5: Hunting opportunities (E1 - Weiser River 32A, Short Range 8/15, Archery 8/20, General Youth 10/2, General 10/10) and access to other recreational opportunities and improvements under closure area

**Implementation Condition:** Related to reduced risk of fire hazards and recreational activity.

**Notifications:** Liaison Officer notify Idaho Fish and Game and Resource Advisor of reduced closure area.

**Management Actions:**

- Priority 3/4/5: Assess fire activity and fire modeling predictions, consider updating closure information. Public information officer will consider scheduling a community meeting/open house to share information on fire activity.

**Resources Recommended:**



# OPERATIONS

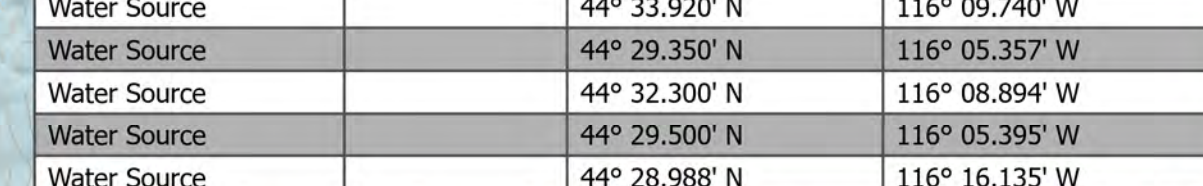
FOUR CORNERS  
ID-PAF-005394  
8/28/22 DAY

11,345 ACRES AT 8/27/22 @ 2158 MDT



- IR Intense Heat
- IR Scattered Heat
- IR Isolated Heat Source
- Aerial Hazard
- Dip Site
- Helispot
- Sling Site
- Unimproved Landing Area
- Division Break
- Incident Command Post
- Drop Point
- Camp
- Value at Risk
- Other
- Mobile Weather Unit
- Repeater
- Hazard
- Water Source
- Restricted Water Source
- Local Connector
- Local Road
- 4WD
- Trail
- Bureau of Land Management (BLM)
- Bureau of Reclamation (BOR)
- State
- US Forest Service (USFS)
- Private; Undetermined
- Summit; Gap
- Ranger District Office
- Campground
- Trailhead
- Boating Site
- Interpretive Site
- Snowpark
- Interagency Fire History Polygons
- Structures
- Basic Custodial Care: 1 (CLOSED)
- High Clearance Vehicles: 2
- Passenger Cars: 3, 4, 5
- Other Road
- Whitebark Pine
- Contingency Lines

FC Point Type	Label	Latitude WGS84 DDM	Longitude WGS84 DDM
Camp		44° 32.555' N	116° 10.316' W
Camp	4-Bit Spike	44° 27.305' N	116° 16.931' W
Closure	TCP #1	44° 34.608' N	116° 12.214' W
Closure	TCP #2	44° 28.228' N	116° 16.127' W
Closure	TCP #3	44° 26.187' N	116° 18.957' W
Closure	TCP #4	44° 23.253' N	116° 14.513' W
Closure	TCP #5	44° 23.687' N	116° 12.195' W
Closure	TCP #6	44° 30.591' N	116° 05.694' W
Closure	TCP #7	44° 25.007' N	116° 05.847' W
Dip Site	Blue Dip		
Dip Site	Lily Dip	44° 26.170' N	116° 10.191' W
Dip Site	Pole Dip	44° 28.979' N	116° 12.951' W
Dip Site	Snowbank Dip	44° 27.470' N	116° 07.381' W
Dip Site	Square Dip	44° 33.650' N	116° 11.201' W
Dip Site	Twin Dip	44° 28.620' N	116° 06.731' W
Dip Site	Willow Dip		
Drop Point	1	44° 32.432' N	116° 10.236' W
Drop Point	10	44° 30.592' N	116° 08.892' W
Drop Point	12	44° 32.322' N	116° 07.366' W
Drop Point	15	44° 34.237' N	116° 10.498' W
Drop Point	18	44° 34.092' N	116° 08.864' W
Drop Point	19	44° 28.839' N	116° 12.293' W
Drop Point	2	44° 33.534' N	116° 10.020' W
Drop Point	21	44° 32.805' N	116° 08.228' W
Drop Point	22	44° 29.205' N	116° 14.937' W
Drop Point	23	44° 29.352' N	116° 12.886' W
Drop Point	3	44° 32.508' N	116° 09.006' W
Drop Point	4	44° 31.797' N	116° 08.227' W
Drop Point	42	44° 31.829' N	116° 11.901' W
Drop Point	5	44° 32.805' N	116° 08.228' W
Drop Point	6	44° 32.402' N	116° 07.211' W
Drop Point	71	44° 29.973' N	116° 05.116' W
Helispot	H-1	44° 29.470' N	116° 00.718' W
Helispot	H-15	44° 32.407' N	116° 09.935' W
Helispot	H-15	44° 32.570' N	116° 11.081' W
Helispot	H-2	44° 31.926' N	116° 09.950' W
Helispot	H-23	44° 31.990' N	116° 11.990' W
Helispot	H-51	44° 29.210' N	116° 15.031' W
Helispot	H-54	44° 28.100' N	116° 16.701' W
Helispot	H-68	44° 29.420' N	116° 11.851' W
Helispot	H-74	44° 28.290' N	116° 09.951' W
Helispot	H-76	44° 27.288' N	116° 09.716' W
Helispot	H-78	44° 29.092' N	116° 09.263' W
Helispot	H-81	44° 29.060' N	116° 08.141' W
Incident Command Post		44° 28.463' N	116° 03.443' W
Mobile Weather Unit	4-Bit RAWs	44° 29.160' N	116° 15.001' W
Mobile Weather Unit	North RAWs	44° 33.550' N	116° 10.467' W
Mobile Weather Unit	Southeast RAWs	44° 24.780' N	116° 06.481' W
Repeater	AC-Link	44° 29.525' N	116° 09.525' W
Repeater	CMD-7	44° 26.398' N	116° 07.521' W
Repeater	CMD-8	44° 35.916' N	116° 14.950' W
Repeater	CMD-9	44° 26.537' N	115° 52.198' W
Restricted Water Source	No Dipping		
Sling Site		44° 32.130' N	116° 09.867' W
Sling Site	Diels Sling 1	44° 28.946' N	116° 08.313' W
Sling Site	Whiskey Sling	44° 32.551' N	116° 10.340' W
Water Source		44° 32.324' N	116° 06.957' W
Water Source		44° 29.837' N	116° 05.649' W
Water Source		44° 28.347' N	116° 04.728' W
Water Source		44° 29.862' N	116° 05.713' W
Water Source		44° 33.946' N	116° 09.822' W
Water Source		44° 33.907' N	116° 09.740' W
Water Source		44° 29.350' N	116° 05.357' W
Water Source		44° 32.300' N	116° 08.894' W
Water Source		44° 29.500' N	116° 05.395' W
Water Source		44° 28.988' N	116° 16.135' W



© GB TEAM 4 GIS  
8/28/2023 15:14  
A CRES FROM R AND SES  
NORTH AMERICAN 1983 DATUM (LANTION GRID)





Snowbank Mtn looking North to fire perimeter in DIV D – Western control line.



Looking down Willow Creek, w/ Willow Creek Reservoir





Snowbank Comm Site looking South to 446 rd and primary control line



Looking East down 446 rd and primary control line





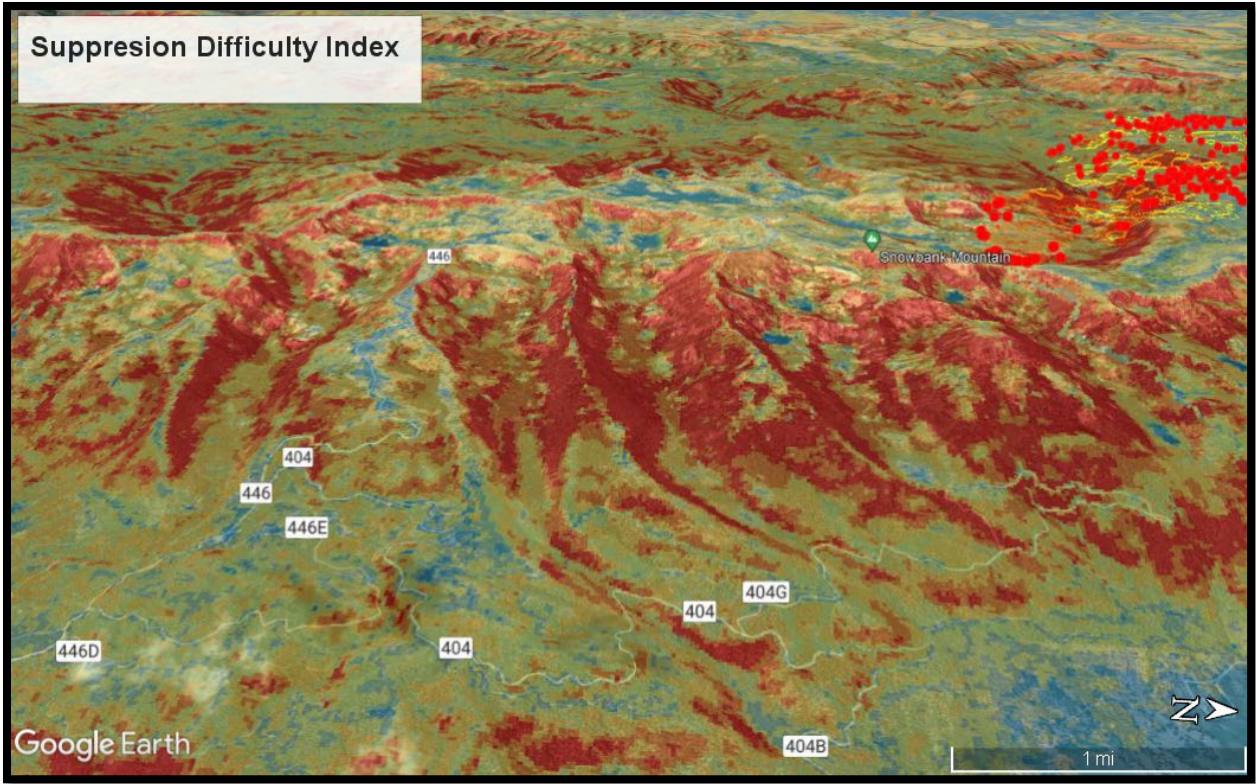
Looking West along dozer line, connecting 446 rd to 404 rds for primary control line



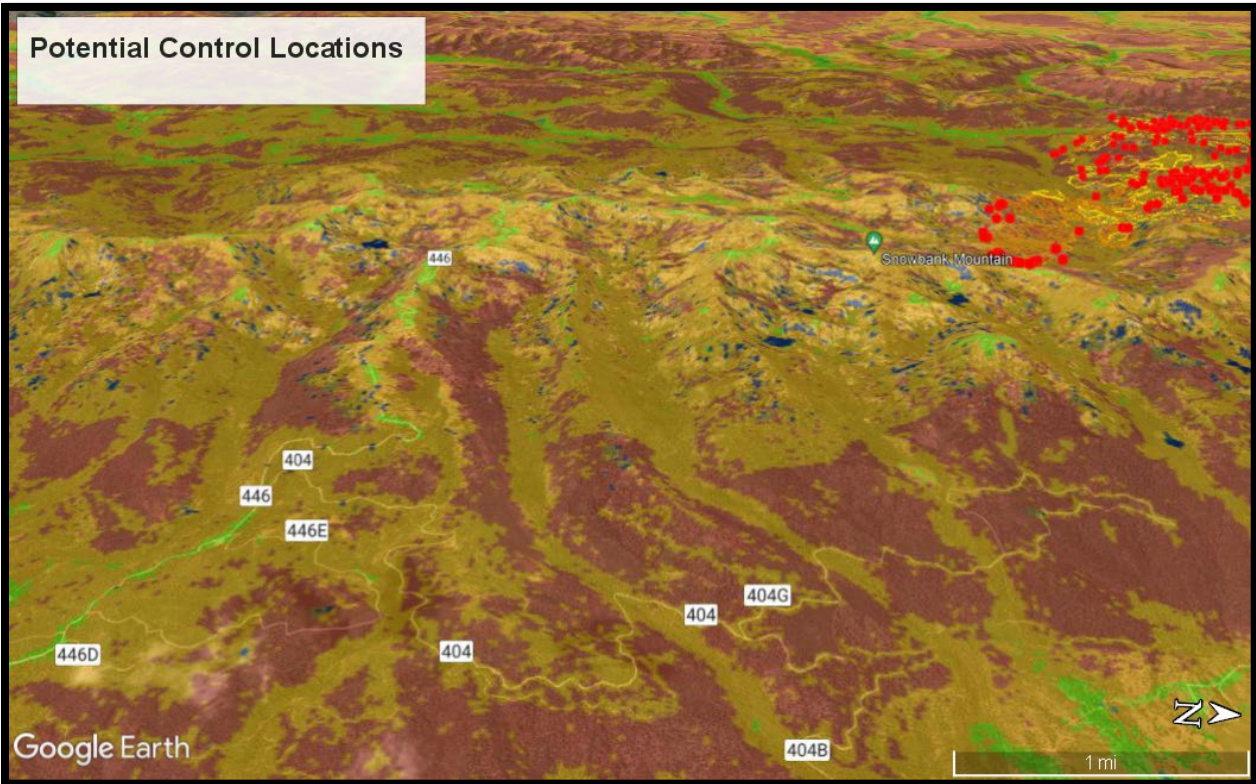
Looking East up dozer line along primary control line



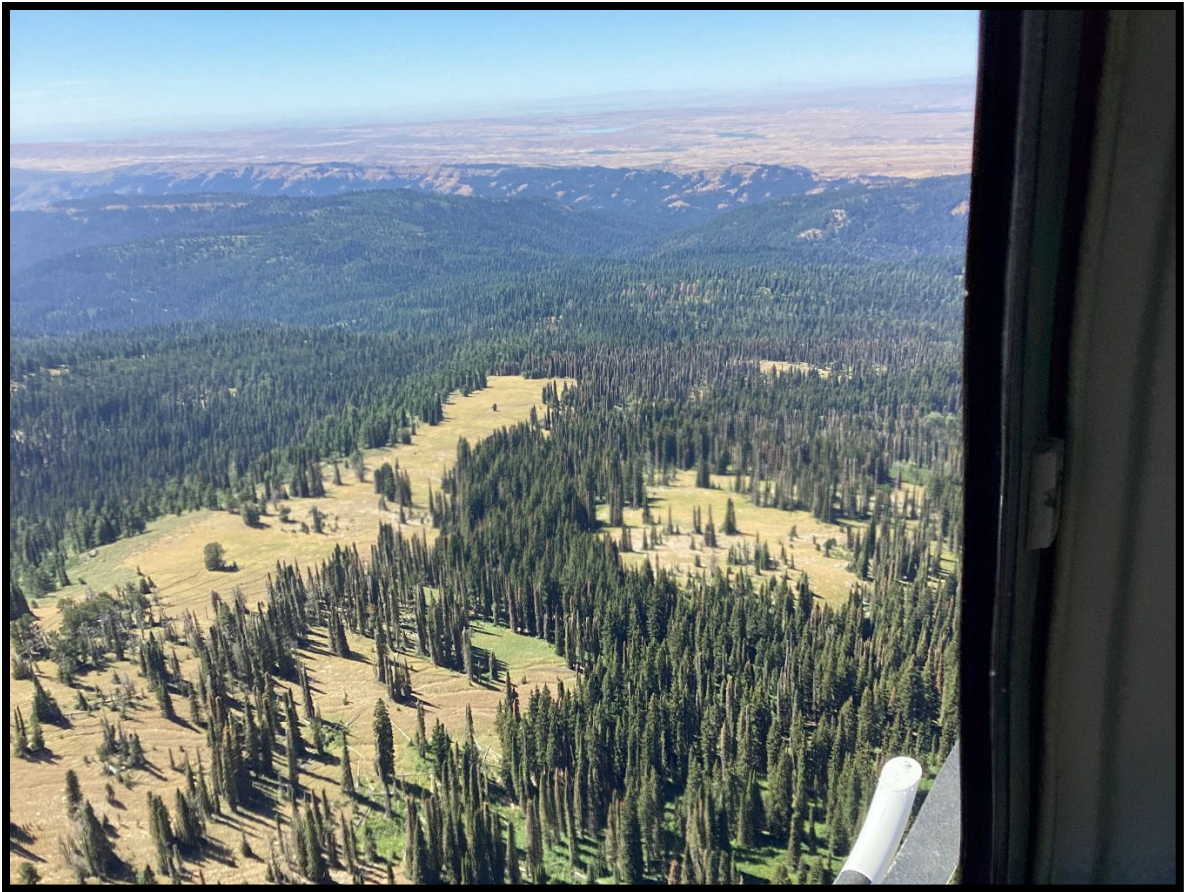
### Suppression Difficulty Index



### Potential Control Locations







Flying West (looking WSW) along Wilson Corrals Trail, proposed alternate control line



Flying West (looking SW) along Wilson Corrals Trail, proposed alternate control line





From Wilson Corrals Trail, looking North towards DIV D