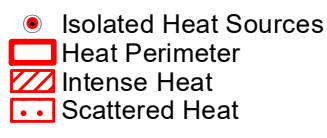


116°18'W 116°17'W 116°16'W 116°15'W 116°14'W 116°13'W 116°12'W 116°11'W 116°10'W 116°9'W 116°8'W 116°7'W 116°6'W 116°5'W 116°4'W


Four Corners IR Map
ID-PAF-005394
Map Date: 8/18/2022
Imagery Date: 08/18/2022
Imagery Time: 0109 MDT
IR Interpreted Map Acres: 4,112

IRIN: Tina Rotenbury

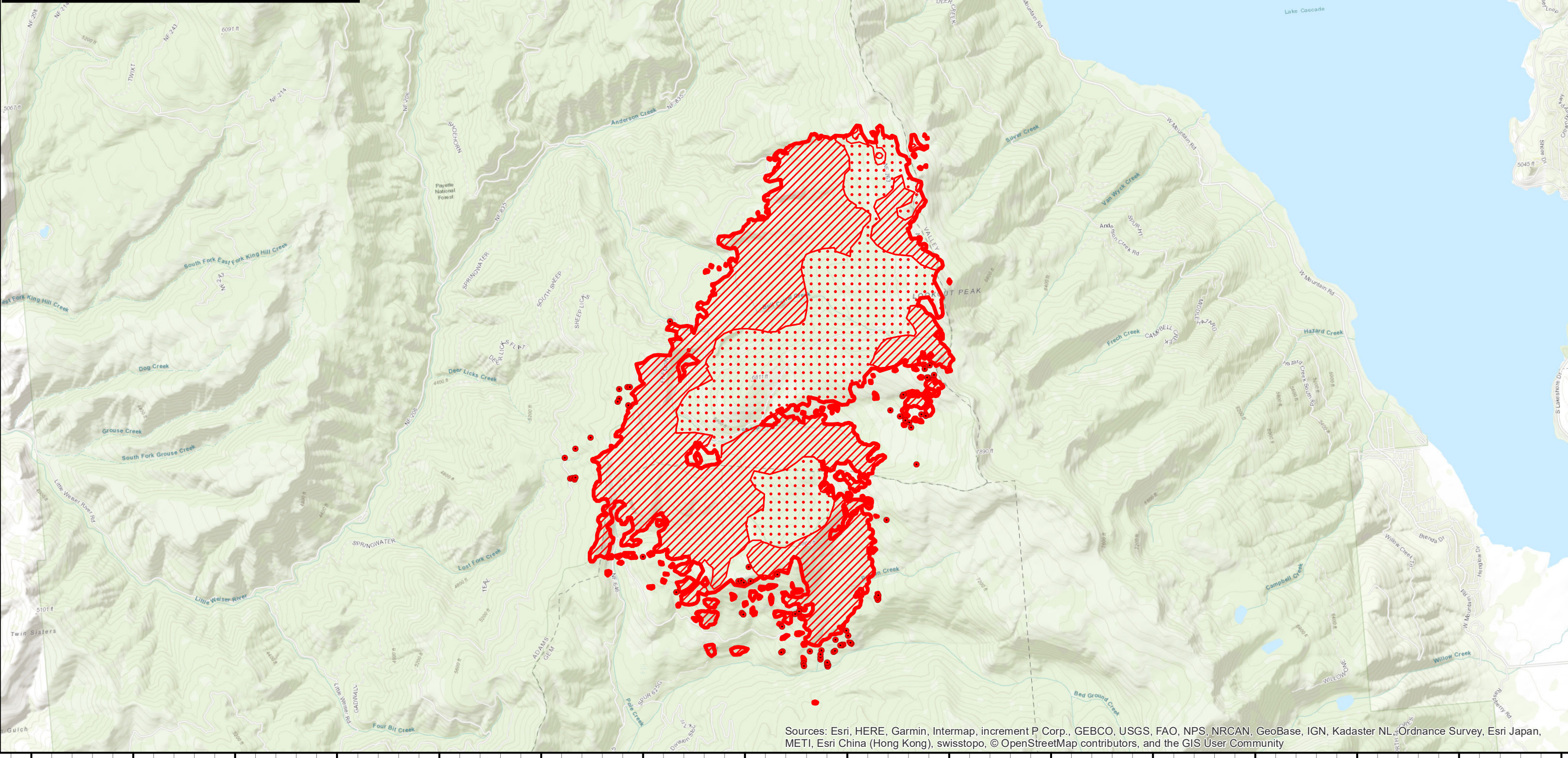


 Isolated Heat Sources
 Heat Perimeter
 Intense Heat
 Scattered Heat

WGS 1984 UTM Zone 10N
 0 0.25 0.5 1 Miles



Possible IR Heat Source
 44° 34' 25.684" N
 116° 8' 53.418" W



116°19'W 116°18'W 116°17'W 116°16'W 116°15'W 116°14'W 116°13'W 116°12'W 116°11'W 116°10'W 116°9'W 116°8'W 116°7'W 116°6'W 116°5'W 116°4'W

Sources: Esri, HERE, Garmin, Intermap, increment P Corp., GEBCO, USGS, FAO, NPS, NRCAN, GeoBase, IGN, Kadaster NL, Ordnance Survey, Esri Japan, METI, Esri China (Hong Kong), swisstopo, © OpenStreetMap contributors, and the GIS User Community

44°35'N
44°34'N
44°33'N
44°32'N
44°31'N
44°30'N
44°29'N

44°34'N
44°33'N
44°32'N
44°31'N
44°30'N
44°29'N
44°28'N