


116°19'W 116°18'W 116°17'W 116°16'W 116°15'W 116°14'W 116°13'W 116°12'W 116°11'W 116°10'W 116°9'W 116°8'W 116°7'W 116°6'W 116°5'W 116°4'W 116°3'W 116°2'W 116°1'W






Four Corners IR Map
ID-PAF-005394
Map Date: 8/19/2022
Imagery Date: 08/18/2022
Imagery Time: 2326 MDT
IR Interpreted Map Acres: 5,560

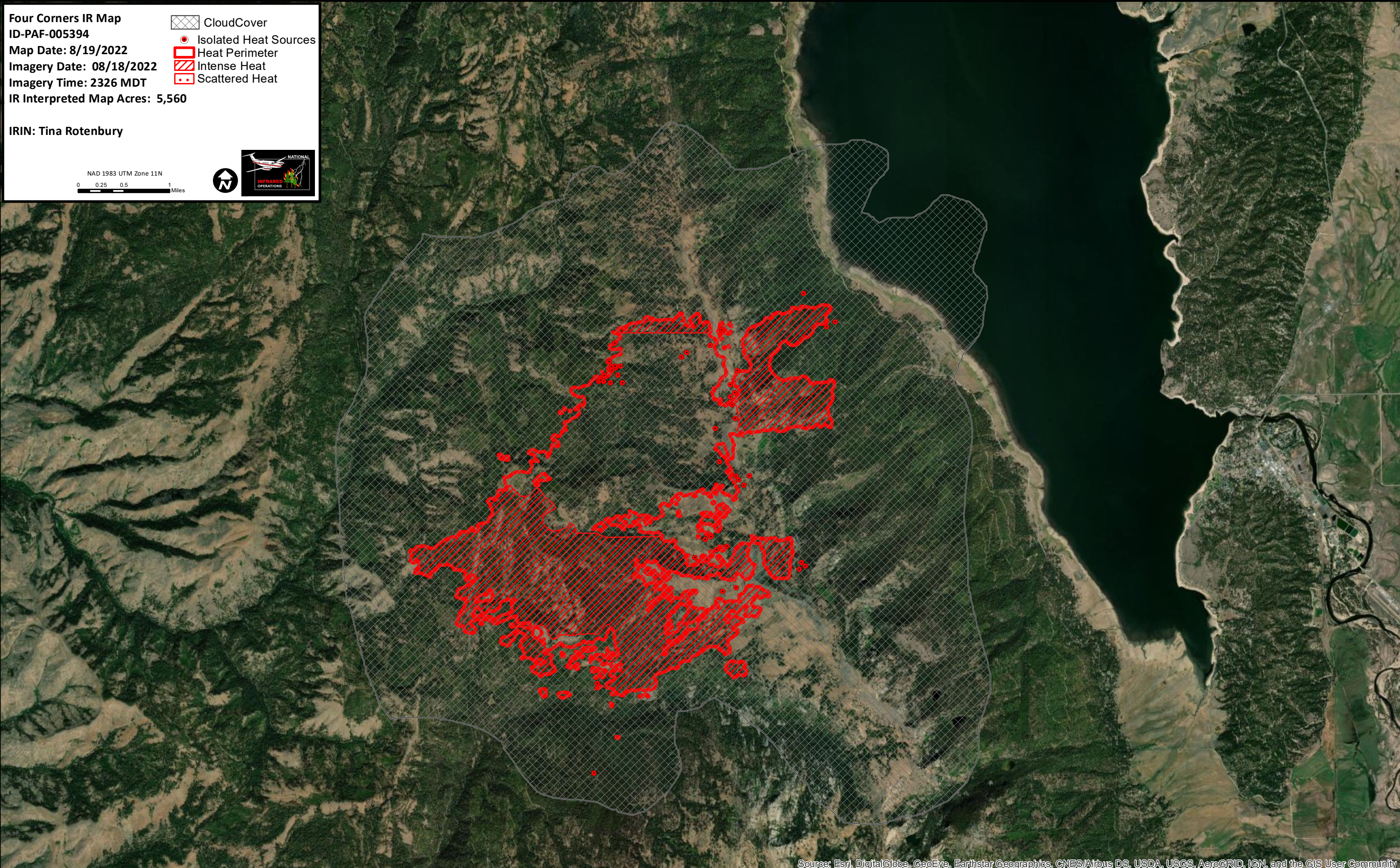
IRIN: Tina Rotenbury

NAD 1983 UTM Zone 11N

0 0.25 0.5 1 Miles



-  CloudCover
-  Isolated Heat Sources
-  Heat Perimeter
-  Intense Heat
-  Scattered Heat



116°19'W 116°18'W 116°17'W 116°16'W 116°15'W 116°14'W 116°13'W 116°12'W 116°11'W 116°10'W 116°9'W 116°8'W 116°7'W 116°6'W 116°5'W 116°4'W 116°3'W 116°2'W 116°1'W

Source: Esri, DigitalGlobe, GeoEye, Earthstar Geographics, CNES/Airbus DS, USDA, USGS, AeroGRID, IGN, and the GIS User Community

44°35'N
44°34'N
44°33'N
44°32'N
44°31'N
44°30'N
44°29'N
44°28'N

44°35'N
44°34'N
44°33'N
44°32'N
44°31'N
44°30'N
44°29'N
44°28'N