



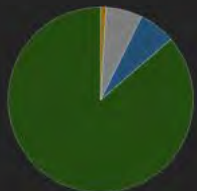
# HALFWAY HILL

11,728 Ac

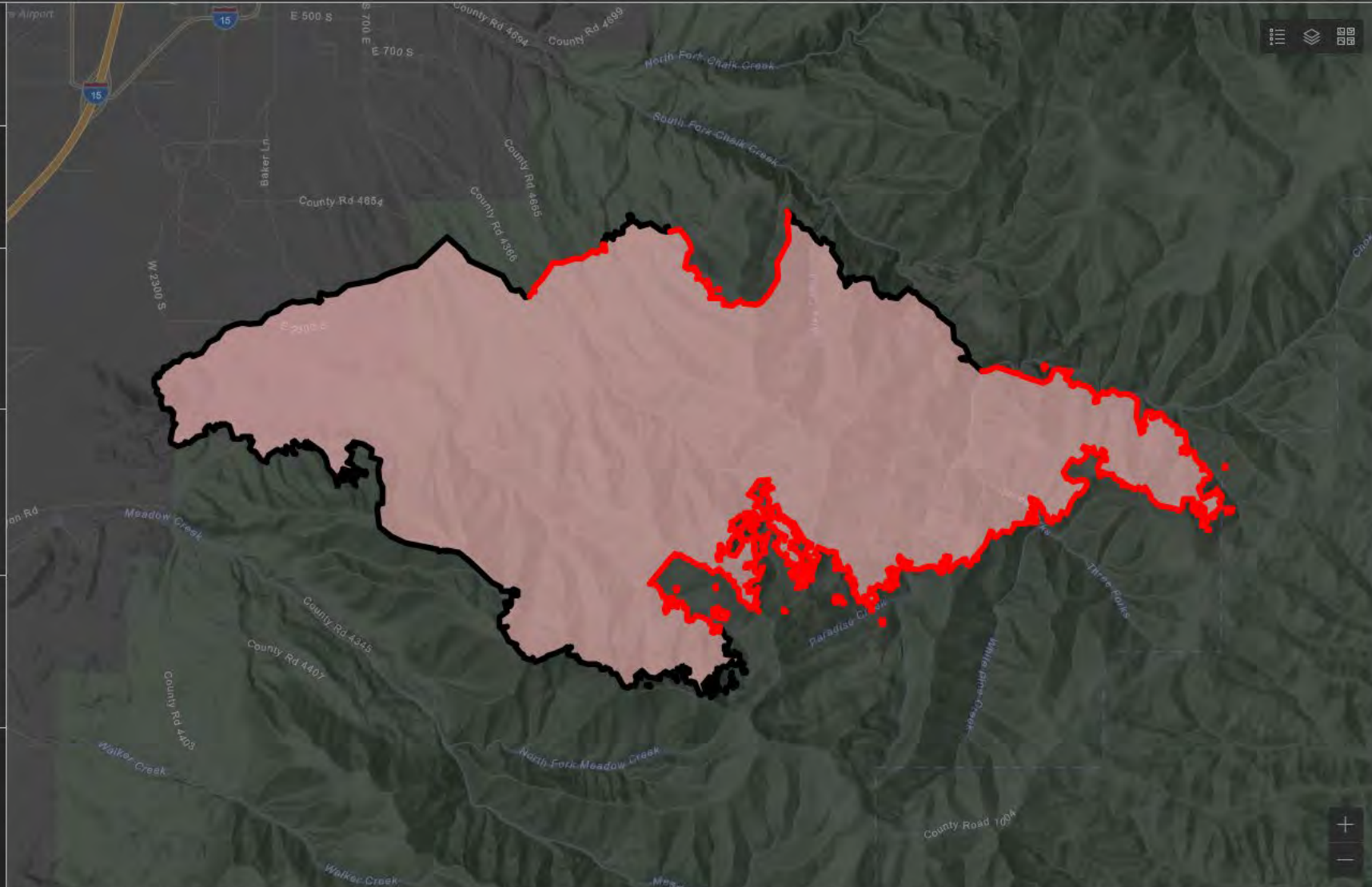
Percent Complete  
70%

Estimated Cost to Date  
\$9.7M

Total Incident Personnel  
408



- BLM 1%
- PVT 6%
- STATE 6%
- USFS 86%



# Halfway Hill Fire General Weather Outlook

For Planning Purposes Only, see the IAP for the Official Forecast

Forecast made Friday, July 22 2022 - IMET Mike Seaman

Conditions at	Sat	Sun	Mon	Tue	Wed	Thu
BKCU1 (6500 Ft)	23-Jul	24-Jul	25-Jul	26-Jul	27-Jul	28-Jul
Highlights	Elevated					
Clouds @ 1500 (%)	40	50	70	80	40	30
Average Max Temp (F)	97	94	92	88	91	92
Daytime Min RH (%)	14	18	22	29	22	18
AM RH Recovery (%)	29	38	48	60	64	51
LAL	2	2	3	4	3	2
Haines Index	6	4	4	3	5	5
Exposed Wind (mph)	11G24	9G20	6G18	6G18	6G18	6G18
Wind Direction*	WSW	WSW	SW	W	NW	NW
Precip Chance	15%	30%	40%	60%	30%	20%
Potential Rainfall	T-0.05	0.01-0.10	0.10-0.25	0.25-0.33	0.01-0.10	0.01-0.10

## KEY:

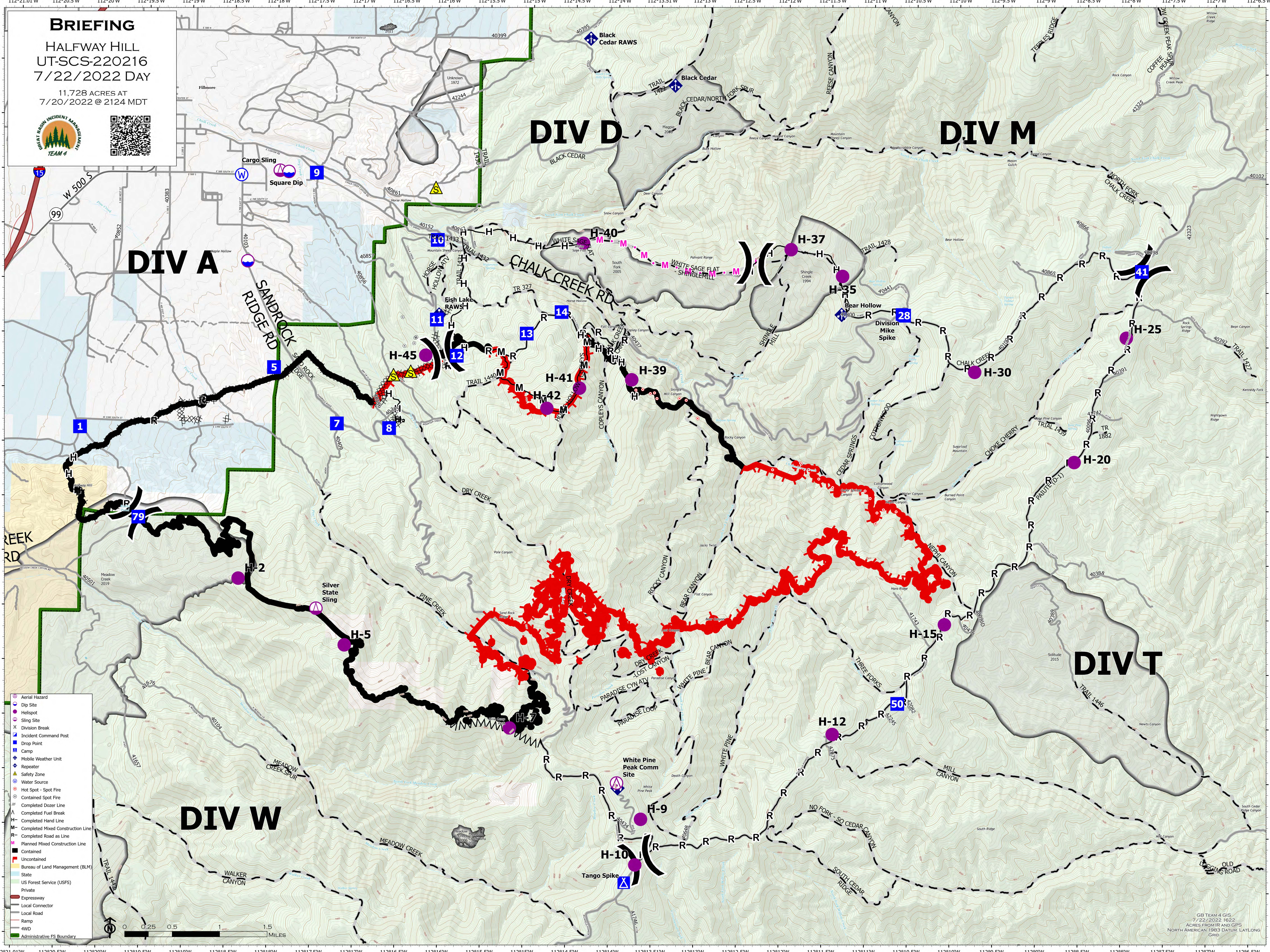
	Moderate Burning Conditions	Caution - Elevated Burning Conditions	Extreme Burning Conditions
Clouds	> 40 %	15 to 40 %	< 15 %
Avg Max Temp	< 80 F	80 to 89 F	> 89 F
Min Humidity	> 20 %	16 to 20 %	< 15 %
AM RH Recovery	> 45 %	25 to 45 %	< 25%
LAL	1	2 to 5	6
Haines Index	< 4	4 to 5	6
Ridge Wind	< 20 mph	20 to 25 mph	> 25 mph
*Wind Direction	Criticality of wind direction highly dependent on burn operations and/or structures threatened		

4 or more EXTREME blocks in a day equals the potential for a Critical Weather Day

# BRIEFING

HALFWAY HILL  
UT-SCS-220216  
7/22/2022 DAY

11,728 ACRES AT  
7/20/2022 @ 2124 MDT



- Aerial Hazard
- Dip Site
- Helispot
- Sling Site
- Division Break
- Incident Command Post
- Drop Point
- Camp
- Mobile Weather Unit
- Repeater
- Safety Zone
- Water Source
- Hot Spot - Spot Fire
- Contained Spot Fire
- Completed Dozer Line
- Completed Fuel Break
- Completed Hand Line
- M - Completed Mixed Construction Line
- R - Completed Road as Line
- M - Planned Mixed Construction Line
- Contained
- Uncontained
- Bureau of Land Management (BLM)
- State
- US Forest Service (USFS)
- Private
- Expressway
- Local Connector
- Local Road
- Ramp
- 4WD
- Administrative PS Boundary

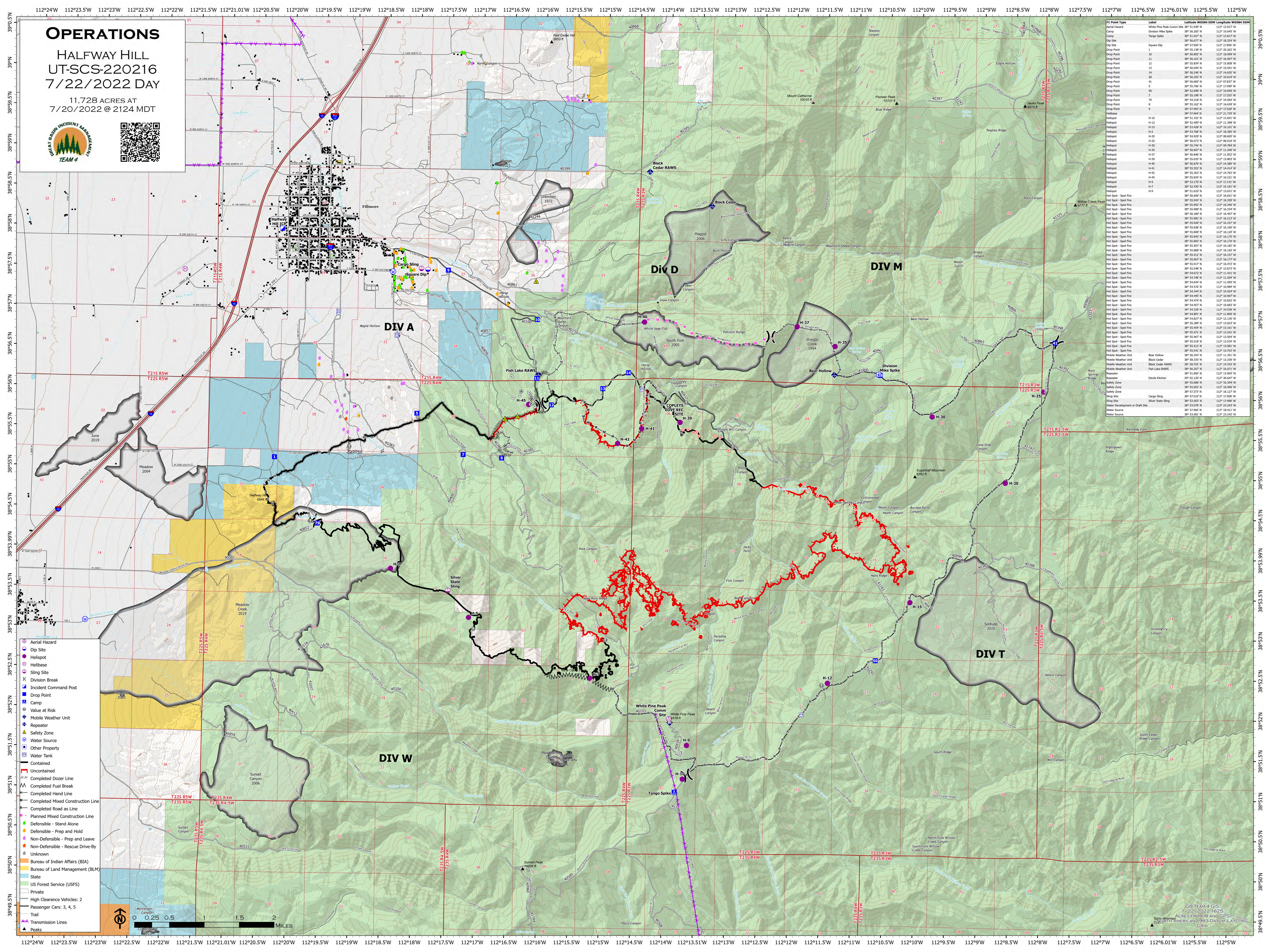


GB TEAM 4 GIS  
7/22/2022 1622  
ACRES FROM IIR AND GIS  
NORTH AMERICAN 1983 DATUM; LAT/LONG  
GRID

# OPERATIONS

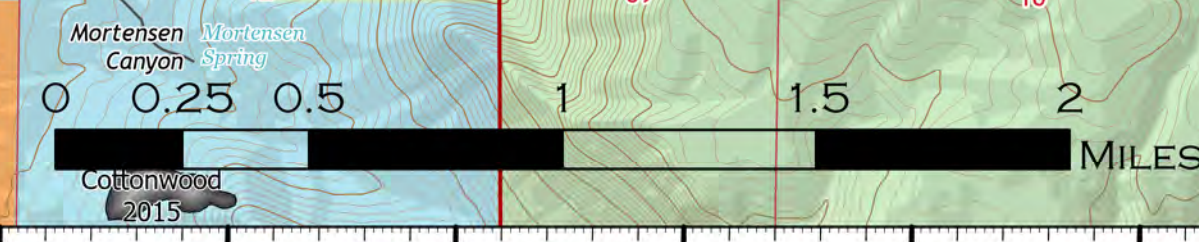
## HALFWAY HILL UT-SCS-220216 7/22/2022 DAY

11,728 ACRES AT  
7/20/2022 @ 2124 MDT



FC Point Type	Label	Latitude	Longitude
Control Tower	White Pine Peak Comm Site	38° 51.399' N	112° 13.949' W
Camp	Division Mike Spike	38° 56.265' N	112° 15.649' W
Camp	Tango Spike	38° 56.077' N	112° 18.324' W
Drop Point	Square Dip	38° 57.500' N	112° 17.856' W
Drop Point		38° 56.136' N	112° 20.862' W
Drop Point		38° 56.892' N	112° 16.999' W
Drop Point		38° 56.161' N	112° 16.997' W
Drop Point		38° 56.257' N	112° 16.997' W
Drop Point		38° 56.044' N	112° 15.941' W
Drop Point		38° 56.687' N	112° 07.837' W
Drop Point		38° 55.706' N	112° 17.999' W
Drop Point		38° 55.198' N	112° 17.253' W
Drop Point		38° 55.182' N	112° 16.639' W
Drop Point		38° 57.497' N	112° 17.528' W
Drop Point		38° 55.430' N	112° 21.729' W
Helipost	H-10	38° 51.191' N	112° 13.991' W
Helipost	H-12	38° 52.409' N	112° 11.988' W
Helipost	H-15	38° 54.826' N	112° 16.937' W
Helipost	H-2	38° 53.768' N	112° 18.385' W
Helipost	H-20	38° 54.929' N	112° 08.607' W
Helipost	H-25	38° 56.972' N	112° 08.017' W
Helipost	H-30	38° 55.244' N	112° 09.784' W
Helipost	H-35	38° 56.607' N	112° 11.949' W
Helipost	H-37	38° 55.946' N	112° 14.952' W
Helipost	H-39	38° 55.639' N	112° 13.803' W
Helipost	H-40	38° 55.679' N	112° 14.589' W
Helipost	H-41	38° 55.552' N	112° 14.414' W
Helipost	H-42	38° 55.307' N	112° 14.793' W
Helipost	H-45	38° 55.318' N	112° 16.564' W
Helipost	H-5	38° 53.170' N	112° 32.131' W
Helipost	H-7	38° 52.430' N	112° 15.181' W
Helipost	H-9	38° 51.607' N	112° 16.631' W
Hot Spot - Spot Fire		38° 55.947' N	112° 16.559' W
Hot Spot - Spot Fire		38° 55.902' N	112° 16.949' W
Hot Spot - Spot Fire		38° 55.998' N	112° 16.334' W
Hot Spot - Spot Fire		38° 55.189' N	112° 16.907' W
Hot Spot - Spot Fire		38° 55.982' N	112° 16.217' W
Hot Spot - Spot Fire		38° 55.928' N	112° 16.197' W
Hot Spot - Spot Fire		38° 55.808' N	112° 16.120' W
Hot Spot - Spot Fire		38° 55.847' N	112° 16.179' W
Hot Spot - Spot Fire		38° 55.892' N	112° 16.139' W
Hot Spot - Spot Fire		38° 55.957' N	112° 16.127' W
Hot Spot - Spot Fire		38° 55.907' N	112° 16.177' W
Hot Spot - Spot Fire		38° 55.917' N	112° 16.172' W
Hot Spot - Spot Fire		38° 55.948' N	112° 13.917' W
Hot Spot - Spot Fire		38° 54.672' N	112° 11.431' W
Hot Spot - Spot Fire		38° 54.748' N	112° 11.997' W
Hot Spot - Spot Fire		38° 54.576' N	112° 10.989' W
Hot Spot - Spot Fire		38° 54.344' N	112° 10.924' W
Hot Spot - Spot Fire		38° 54.445' N	112° 10.907' W
Hot Spot - Spot Fire		38° 54.474' N	112° 10.832' W
Hot Spot - Spot Fire		38° 54.467' N	112° 10.839' W
Hot Spot - Spot Fire		38° 54.328' N	112° 10.538' W
Hot Spot - Spot Fire		38° 54.891' N	112° 11.609' W
Hot Spot - Spot Fire		38° 54.827' N	112° 12.130' W
Hot Spot - Spot Fire		38° 55.289' N	112° 13.023' W
Hot Spot - Spot Fire		38° 55.454' N	112° 13.181' W
Hot Spot - Spot Fire		38° 55.471' N	112° 13.914' W
Hot Spot - Spot Fire		38° 55.467' N	112° 13.594' W
Hot Spot - Spot Fire		38° 55.518' N	112° 13.544' W
Hot Spot - Spot Fire		38° 55.512' N	112° 13.384' W
Hot Spot - Spot Fire		38° 55.541' N	112° 13.753' W
Mobile Weather Unit		38° 54.259' N	112° 11.551' W
Mobile Weather Unit		38° 58.335' N	112° 13.336' W
Mobile Weather Unit		38° 58.759' N	112° 14.333' W
Mobile Weather Unit		38° 56.207' N	112° 16.911' W
Repeater		38° 51.892' N	112° 13.905' W
Repeater		38° 02.129' N	112° 30.647' W
Safety Zone		38° 56.869' N	112° 16.998' W
Safety Zone		38° 55.652' N	112° 16.998' W
Sling Site		38° 52.509' N	112° 17.928' W
Sling Site		38° 53.593' N	112° 17.688' W
Water Development or Draft Site		38° 53.078' N	112° 23.847' W
Water Source		38° 57.466' N	112° 18.411' W
Water Source		38° 53.081' N	112° 23.242' W

- Aerial Hazard
- Dip Site
- Helipost
- Helibase
- Sling Site
- Division Break
- Incident Command Post
- Drop Point
- Camp
- Value at Risk
- Mobile Weather Unit
- Repeater
- Safety Zone
- Water Source
- Other Property
- Water Tank
- Contained
- Uncontained
- Completed Dozer Line
- Completed Fuel Break
- Completed Hand Line
- Completed Mixed Construction Line
- Completed Road as Line
- Planned Mixed Construction Line
- Defensible - Stand Alone
- Defensible - Prep and Hold
- Non-Defensible - Prep and Leave
- Non-Defensible - Rescue Drive-By
- Unknown
- Bureau of Indian Affairs (BIA)
- Bureau of Land Management (BLM)
- State
- US Forest Service (USFS)
- Private
- High Clearance Vehicles: 2
- Passenger Cars: 3, 4, 5
- Trail
- Transmission Lines
- Peaks



GB TEAM 4 GIS  
7/22/2022 16:25  
ACRES FROM IP AND GPS  
AMERICAN 1983 DATUM, LAT/LONG  
GRID