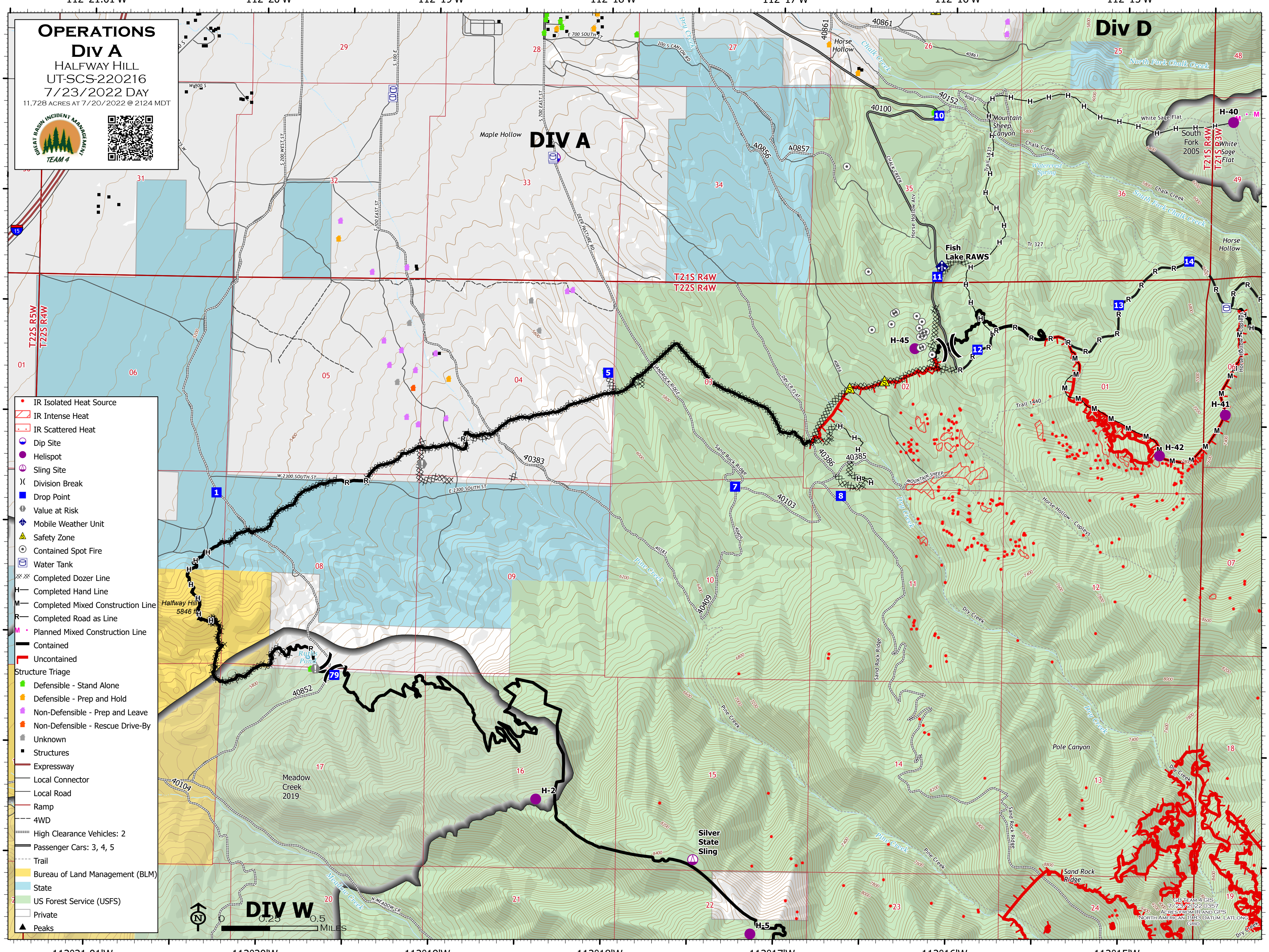


OPERATIONS
Div A
 HALFWAY HILL
 UT-SCS-220216
 7/23/2022 DAY
 11,728 ACRES AT 7/20/2022 @ 2124 MDT





- IR Isolated Heat Source
- ▭ IR Intense Heat
- ▭ IR Scattered Heat
- Dip Site
- Helispot
- Sling Site
- ⌘ Division Break
- Drop Point
- Value at Risk
- Mobile Weather Unit
- Safety Zone
- Contained Spot Fire
- Water Tank
- Completed Dozer Line
- Completed Hand Line
- Completed Mixed Construction Line
- Completed Road as Line
- Planned Mixed Construction Line
- Contained
- Uncontained
- Structure Triage
- Defensible - Stand Alone
- Defensible - Prep and Hold
- Non-Defensible - Prep and Leave
- Non-Defensible - Rescue Drive-By
- Unknown
- Structures
- Expressway
- Local Connector
- Local Road
- Ramp
- 4WD
- High Clearance Vehicles: 2
- Passenger Cars: 3, 4, 5
- Trail
- Bureau of Land Management (BLM)
- State
- US Forest Service (USFS)
- Private
- Peaks



GB TEAM 4 GIS
 7/23/2022 0357
 ACRES FROM IR AND GPS
 NORTH AMERICAN 1983 DATUM, LAT/LONG
 GRID