

112°17'W

112°16'W

112°15'W

112°14'W

112°13'W

112°12'W

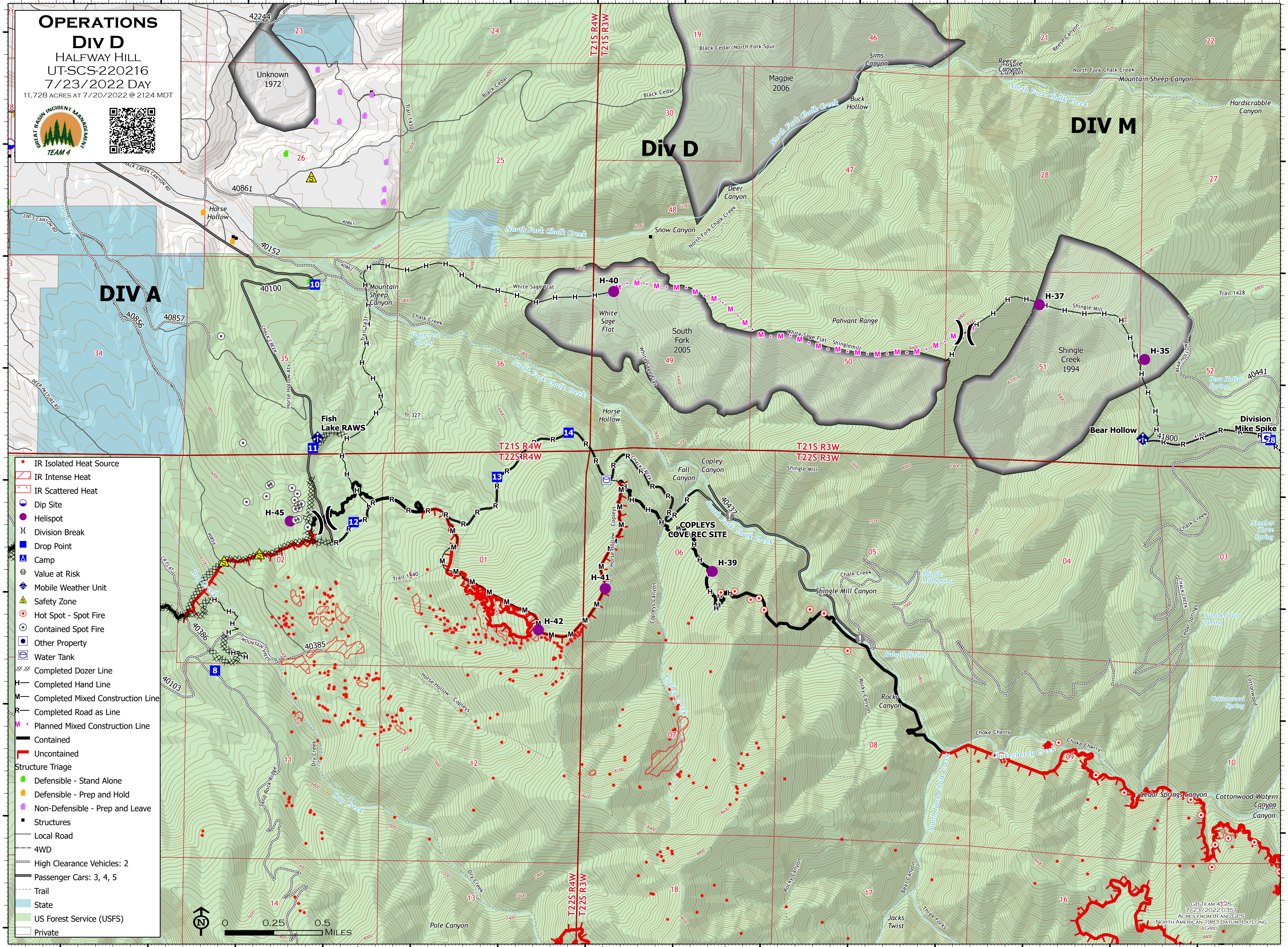
112°11'W

38°58'N
38°57'N
38°56'N
38°55'N
38°54'N
38°53.99'N

38°58'N
38°57'N
38°56'N
38°55'N
38°54'N
38°53.99'N

OPERATIONS
Div D
 HALFWAY HILL
 UT-SCS-220216
 7/23/2022 DAY
 11,728 ACRES AT 7/20/2022 @ 2124 MDT





- IR Isolated Heat Source
- ▭ IR Intense Heat
- IR Scattered Heat
- Dip Site
- Helispot
- X Division Break
- Drop Point
- ▲ Camp
- ⊕ Value at Risk
- ◆ Mobile Weather Unit
- ⚠ Safety Zone
- Hot Spot - Spot Fire
- Contained Spot Fire
- Other Property
- Water Tank
- Completed Dozer Line
- Completed Hand Line
- Completed Mixed Construction Line
- Completed Road as Line
- Planned Mixed Construction Line
- Contained
- Uncontained
- Structure Triage
- Defensible - Stand Alone
- Defensible - Prep and Hold
- Non-Defensible - Prep and Leave
- Structures
- Local Road
- 4WD
- High Clearance Vehicles: 2
- Passenger Cars: 3, 4, 5
- Trail
- State
- US Forest Service (USFS)
- Private



GB TEAM 4 GIS
 7/23/2022 0357
 ACRES FROM IR AND GPS
 NORTH AMERICAN 1983 DATUM, LAT/LONG
 8 GRID