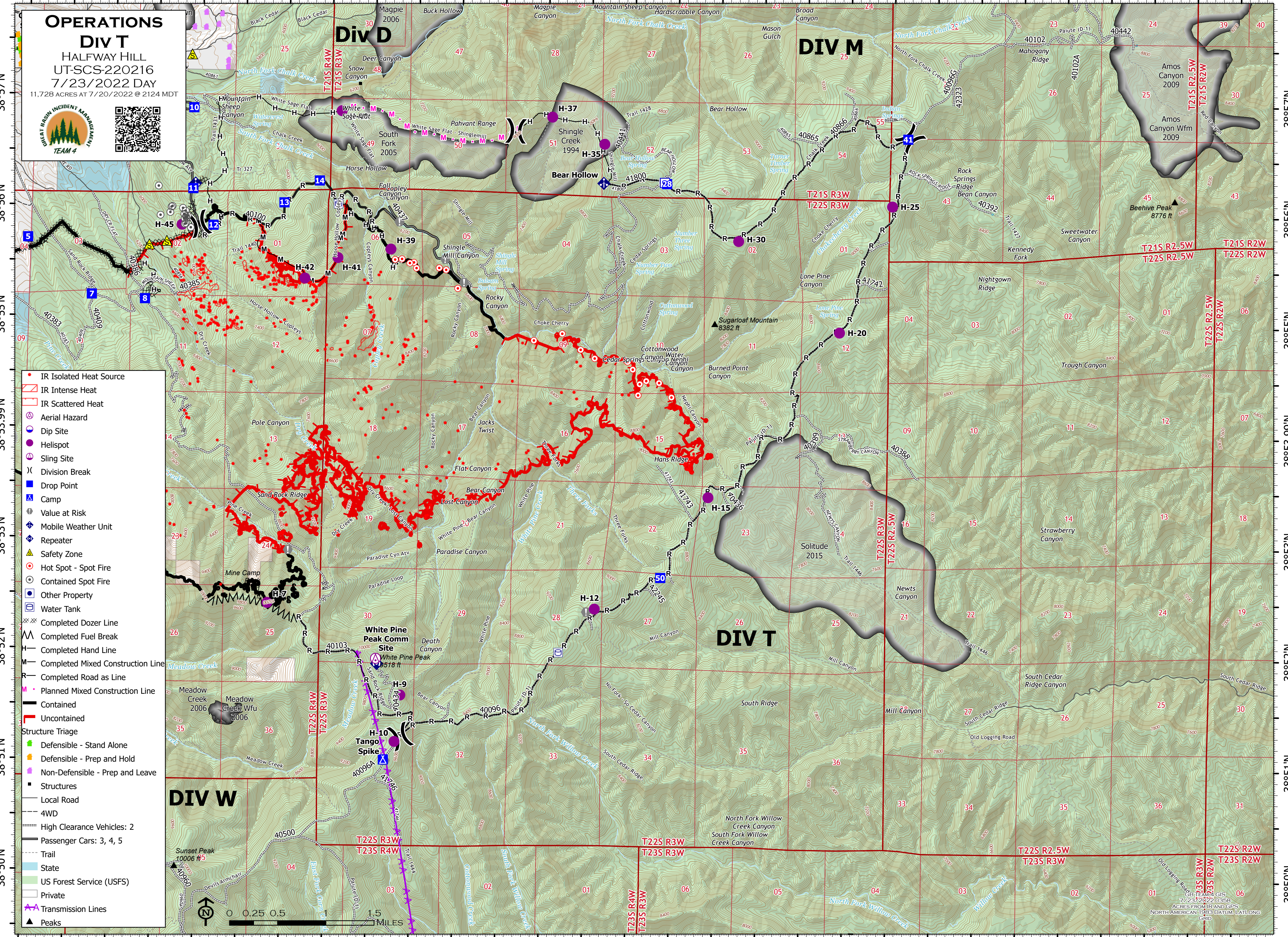


112°18'W 112°17'W 112°16'W 112°15'W 112°14'W 112°13'W 112°12'W 112°11'W 112°10'W 112°9'W 112°8'W 112°7'W 112°6.01'W 112°5'W 112°4'W



OPERATIONS
DIV T
 HALFWAY HILL
 UT-SCS-220216
 7/23/2022 DAY
 11,728 ACRES AT 7/20/2022 @ 2124 MDT




- IR Isolated Heat Source
- IR Intense Heat
- IR Scattered Heat
- Aerial Hazard
- Dip Site
- Helispot
- Sling Site
- Division Break
- Drop Point
- Camp
- Value at Risk
- Mobile Weather Unit
- Repeater
- Safety Zone
- Hot Spot - Spot Fire
- Contained Spot Fire
- Other Property
- Water Tank
- Completed Dozer Line
- Completed Fuel Break
- Completed Hand Line
- Completed Mixed Construction Line
- Completed Road as Line
- Planned Mixed Construction Line
- Contained
- Uncontained
- Structure Triage
- Defensible - Stand Alone
- Defensible - Prep and Hold
- Non-Defensible - Prep and Leave
- Structures
- Local Road
- 4WD
- High Clearance Vehicles: 2
- Passenger Cars: 3, 4, 5
- Trail
- State
- US Forest Service (USFS)
- Private
- Transmission Lines
- Peaks

DIV W

White Pine Peak Comm Site
White Pine Peak
9518 ft

DIV T

DIV M

DIV D

0 0.25 0.5 1.5 MILES

ESRI, GIS
7/23/2022 0358
ACRES FROM IR AND GPS
NORTH AMERICAN 1983 DATUM, LAT/LONG
GRID