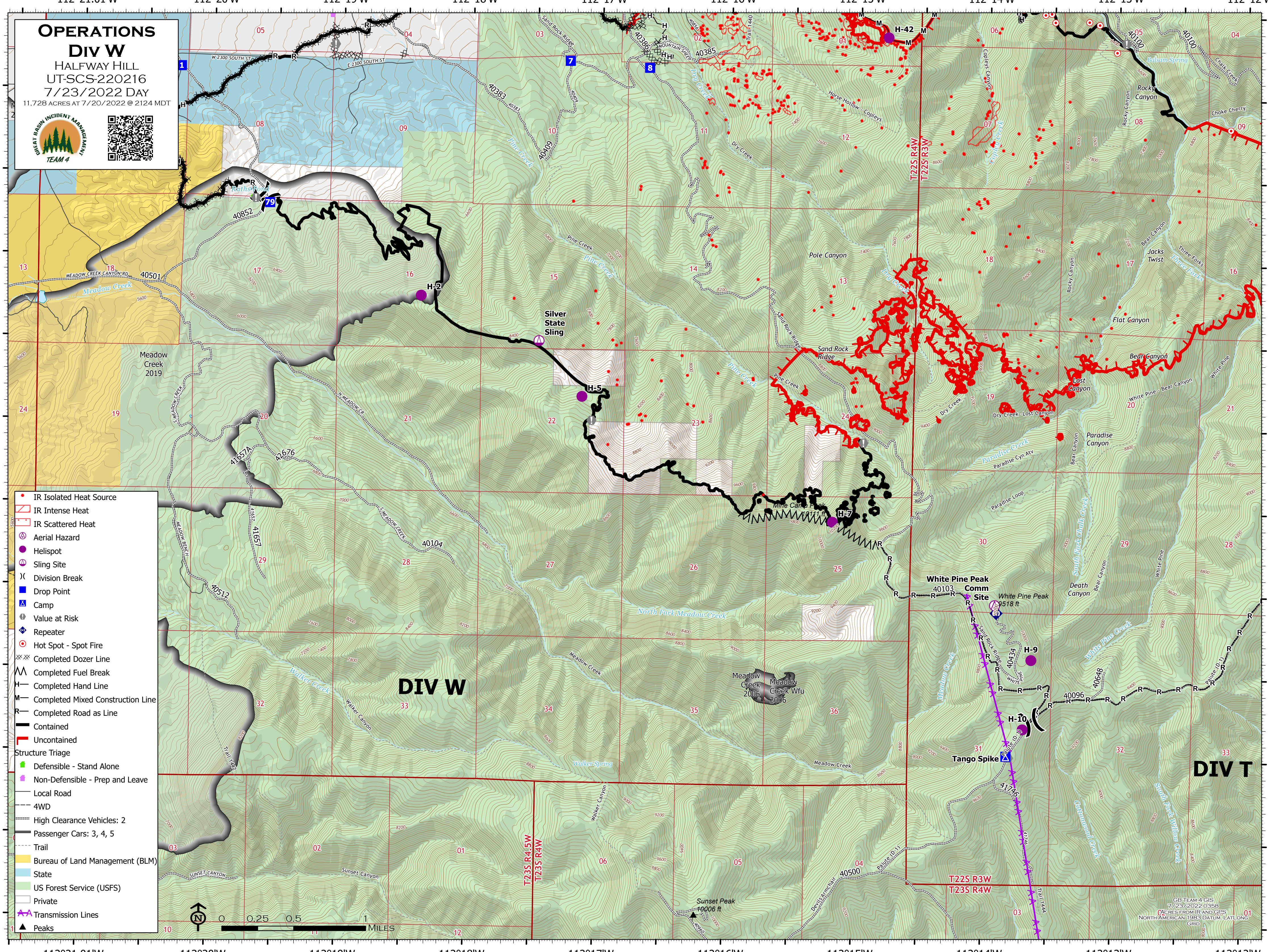
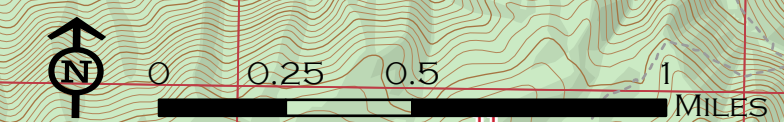


OPERATIONS
Div W
 HALFWAY HILL
 UT-SCS-220216
 7/23/2022 DAY
 11,728 ACRES AT 7/20/2022 @ 2124 MDT





- IR Isolated Heat Source
- ▭ IR Intense Heat
- ▭ IR Scattered Heat
- ⊕ Aerial Hazard
- Helispot
- ⊕ Sling Site
- ⌘ Division Break
- Drop Point
- ⊠ Camp
- ⊕ Value at Risk
- ⊕ Repeater
- ⊕ Hot Spot - Spot Fire
- ⊕ Completed Dozer Line
- ⊕ Completed Fuel Break
- ⊕ Completed Hand Line
- ⊕ Completed Mixed Construction Line
- ⊕ Completed Road as Line
- ▬ Contained
- ▬ Uncontained
- Structure Triage
- ⊕ Defensible - Stand Alone
- ⊕ Non-Defensible - Prep and Leave
- ▬ Local Road
- ▬ 4WD
- ▬ High Clearance Vehicles: 2
- ▬ Passenger Cars: 3, 4, 5
- ▬ Trail
- Bureau of Land Management (BLM)
- State
- US Forest Service (USFS)
- Private
- ⊕ Transmission Lines
- ▲ Peaks



GB TEAM 4 GIS
 7/23/2022 0358
 (ACRES FROM IR AND GPS)
 NORTH AMERICAN 1983 DATUM: LAT/LONG
 GRID