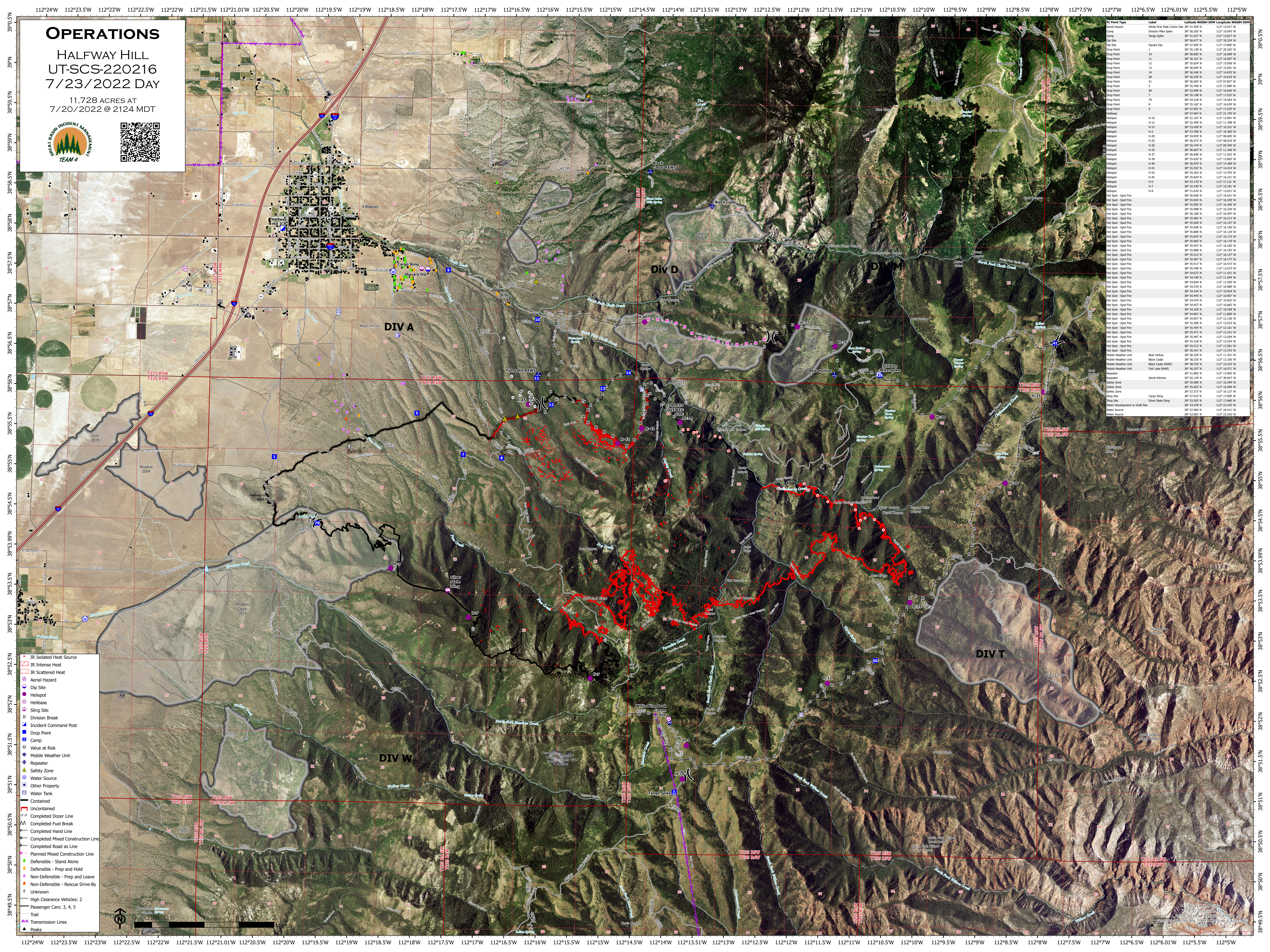


# OPERATIONS

## HALFWAY HILL UT-SCS-220216 7/23/2022 DAY

11,728 ACRES AT  
7/20/2022 @ 2124 MDT



PC Point Type	Label	Latitude WGS84 DOM	Longitude WGS84 DOM
Well Tower	White Pine Peak Corn Site	38° 53.937' N	112° 13.174' W
Camp	Division Hill Spike	38° 56.265' N	112° 15.649' W
Camp	Tango Spike	38° 55.007' N	112° 13.617' W
Drop Site		38° 56.677' N	112° 18.234' W
Drop Site	Square Dip	38° 57.500' N	112° 17.856' W
Drop Point		38° 51.136' N	112° 20.827' W
Drop Point		38° 56.892' N	112° 16.099' W
Drop Point		38° 56.161' N	112° 16.697' W
Drop Point		38° 56.235' N	112° 15.838' W
Drop Point		38° 56.044' N	112° 15.041' W
Drop Point		38° 56.683' N	112° 07.817' W
Drop Point		38° 55.706' N	112° 17.959' W
Drop Point		38° 55.988' N	112° 18.940' W
Drop Point		38° 55.198' N	112° 17.253' W
Drop Point		38° 55.318' N	112° 18.564' W
Drop Point		38° 55.162' N	112° 16.639' W
Drop Point		38° 57.487' N	112° 17.528' W
Helibase		38° 53.466' N	112° 21.709' W
Helipod		38° 51.191' N	112° 13.691' W
Helipod		38° 53.409' N	112° 11.588' W
Helipod		38° 53.155' N	112° 18.319' W
Helipod		38° 53.768' N	112° 18.385' W
Helipod		38° 54.929' N	112° 08.650' W
Helipod		38° 55.425' N	112° 08.017' W
Helipod		38° 55.244' N	112° 09.784' W
Helipod		38° 56.007' N	112° 11.940' W
Helipod		38° 55.860' N	112° 11.527' W
Helipod		38° 55.635' N	112° 13.803' W
Helipod		38° 55.879' N	112° 14.880' W
Helipod		38° 55.552' N	112° 14.414' W
Helipod		38° 55.363' N	112° 14.793' W
Helipod		38° 55.318' N	112° 17.708' W
Helipod		38° 53.170' N	112° 12.131' W
Helipod		38° 55.430' N	112° 15.181' W
Helipod		38° 55.656' N	112° 16.631' W
Helipod		38° 55.947' N	112° 16.559' W
Helipod		38° 55.902' N	112° 16.340' W
Helipod		38° 55.998' N	112° 16.134' W
Helipod		38° 55.187' N	112° 16.897' W
Helipod		38° 55.982' N	112° 16.115' W
Helipod		38° 55.928' N	112° 16.197' W
Helipod		38° 55.828' N	112° 16.107' W
Helipod		38° 55.808' N	112° 16.120' W
Helipod		38° 55.843' N	112° 16.173' W
Helipod		38° 55.888' N	112° 16.173' W
Helipod		38° 55.957' N	112° 16.182' W
Helipod		38° 55.888' N	112° 16.152' W
Helipod		38° 55.912' N	112° 16.137' W
Helipod		38° 55.917' N	112° 16.472' W
Helipod		38° 55.948' N	112° 13.877' W
Helipod		38° 54.672' N	112° 11.431' W
Helipod		38° 55.980' N	112° 11.949' W
Helipod		38° 54.644' N	112° 11.950' W
Helipod		38° 54.576' N	112° 10.889' W
Helipod		38° 54.244' N	112° 10.824' W
Helipod		38° 54.474' N	112° 10.832' W
Helipod		38° 54.457' N	112° 10.807' W
Helipod		38° 54.328' N	112° 10.538' W
Helipod		38° 54.892' N	112° 11.609' W
Helipod		38° 54.657' N	112° 12.135' W
Helipod		38° 55.289' N	112° 13.023' W
Helipod		38° 55.494' N	112° 13.161' W
Helipod		38° 55.471' N	112° 13.241' W
Helipod		38° 55.467' N	112° 13.504' W
Helipod		38° 55.518' N	112° 13.514' W
Helipod		38° 55.512' N	112° 13.581' W
Helipod		38° 55.541' N	112° 13.753' W
Mobile Weather Unit	Deer Hollow	38° 54.294' N	112° 11.851' W
Mobile Weather Unit	Black Cedar	38° 58.135' N	112° 13.136' W
Mobile Weather Unit	Black Cedar MANS	38° 56.755' N	112° 14.333' W
Mobile Weather Unit	Fish Lake MANS	38° 56.207' N	112° 14.671' W
Repeater		38° 51.892' N	112° 13.905' W
Repeater	Devils Kitchen	38° 02.129' N	112° 30.647' W
Safety Zone		38° 55.886' N	112° 16.294' W
Safety Zone		38° 55.652' N	112° 16.196' W
Safety Zone		38° 57.373' N	112° 16.127' W
Sling Site	Cargo Sling	38° 53.505' N	112° 17.968' W
Sling Site	Silver State Sling	38° 53.503' N	112° 17.968' W
Water Source	Mobile Development or Draft Site	38° 53.078' N	112° 23.943' W
Water Source		38° 57.466' N	112° 18.411' W
Water Source		38° 53.081' N	112° 23.242' W

- IR Isolated Heat Source
- IR Intense Heat
- IR Scattered Heat
- Aerial Hazard
- Dip Site
- Helipod
- Helibase
- Sling Site
- Division Break
- Incident Command Post
- Drop Point
- Camp
- Value at Risk
- Mobile Weather Unit
- Repeater
- Safety Zone
- Water Source
- Other Property
- Water Tank
- Contained
- Uncontained
- Completed Dozer Line
- Completed Fuel Break
- Completed Hand Line
- Completed Mixed Construction Line
- Completed Road as Line
- Planned Mixed Construction Line
- Defensible - Stand Alone
- Defensible - Prep and Hold
- Non-Defensible - Prep and Leave
- Non-Defensible - Rescue Drive-By
- Unknown
- High Clearance Vehicles: 2
- Passenger Cars: 3, 4, 5
- Trail
- Transmission Lines
- Peaks



UT-SCS-220216  
7/23/2022 DAY  
11,728 ACRES AT  
7/20/2022 @ 2124 MDT