

112°22'W 112°21.01'W 112°20'W 112°19'W 112°18'W 112°17'W 112°16'W 112°15'W 112°14'W 112°13'W 112°12'W 112°11'W 112°10'W 112°9'W 112°8'W 112°7'W

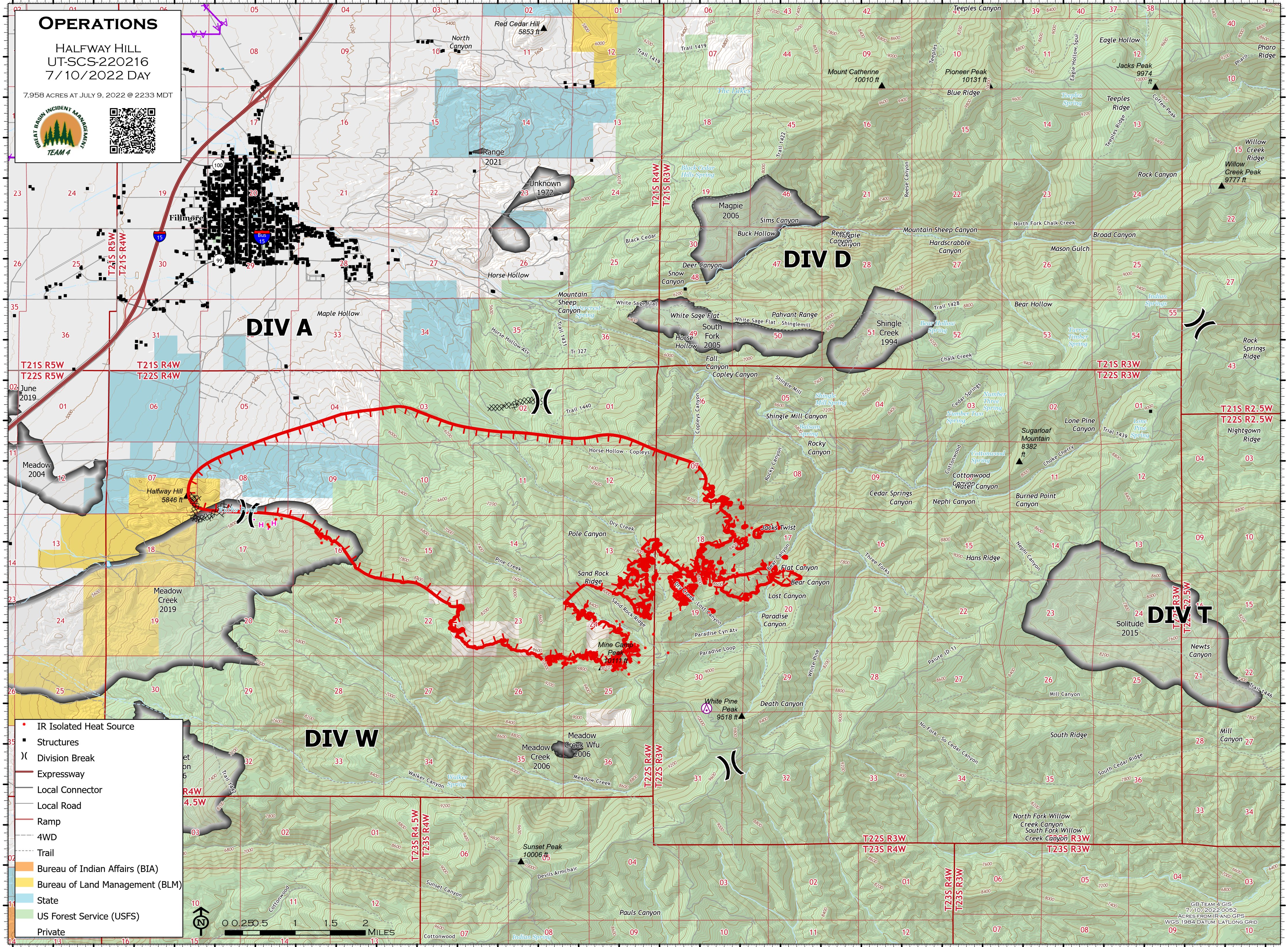
39°N 38°59'N 38°58'N 38°57'N 38°56'N 38°55'N 38°53.99'N 38°53'N 38°51'N 38°50'N

OPERATIONS

HALFWAY HILL
UT-SCS-220216
7/10/2022 DAY

7,958 ACRES AT JULY 9, 2022 @ 2233 MDT





DIV A

DIV D

DIV T

DIV W

- IR Isolated Heat Source
- Structures
-) Division Break
- Expressway
- Local Connector
- Local Road
- Ramp
- 4WD
- Trail
- Bureau of Indian Affairs (BIA)
- Bureau of Land Management (BLM)
- State
- US Forest Service (USFS)
- Private



GB TEAM 4 GIS
7/10/2022 0052
ACRES FROM IIR AND GPS
WGS 1984 DATUM / LATLONG GRID