

112°22'W 112°21.01'W 112°20'W 112°19'W 112°18'W 112°17'W 112°16'W 112°15'W 112°14'W 112°13'W 112°12'W 112°11'W 112°10'W 112°9'W 112°8'W 112°7'W

OPERATIONS

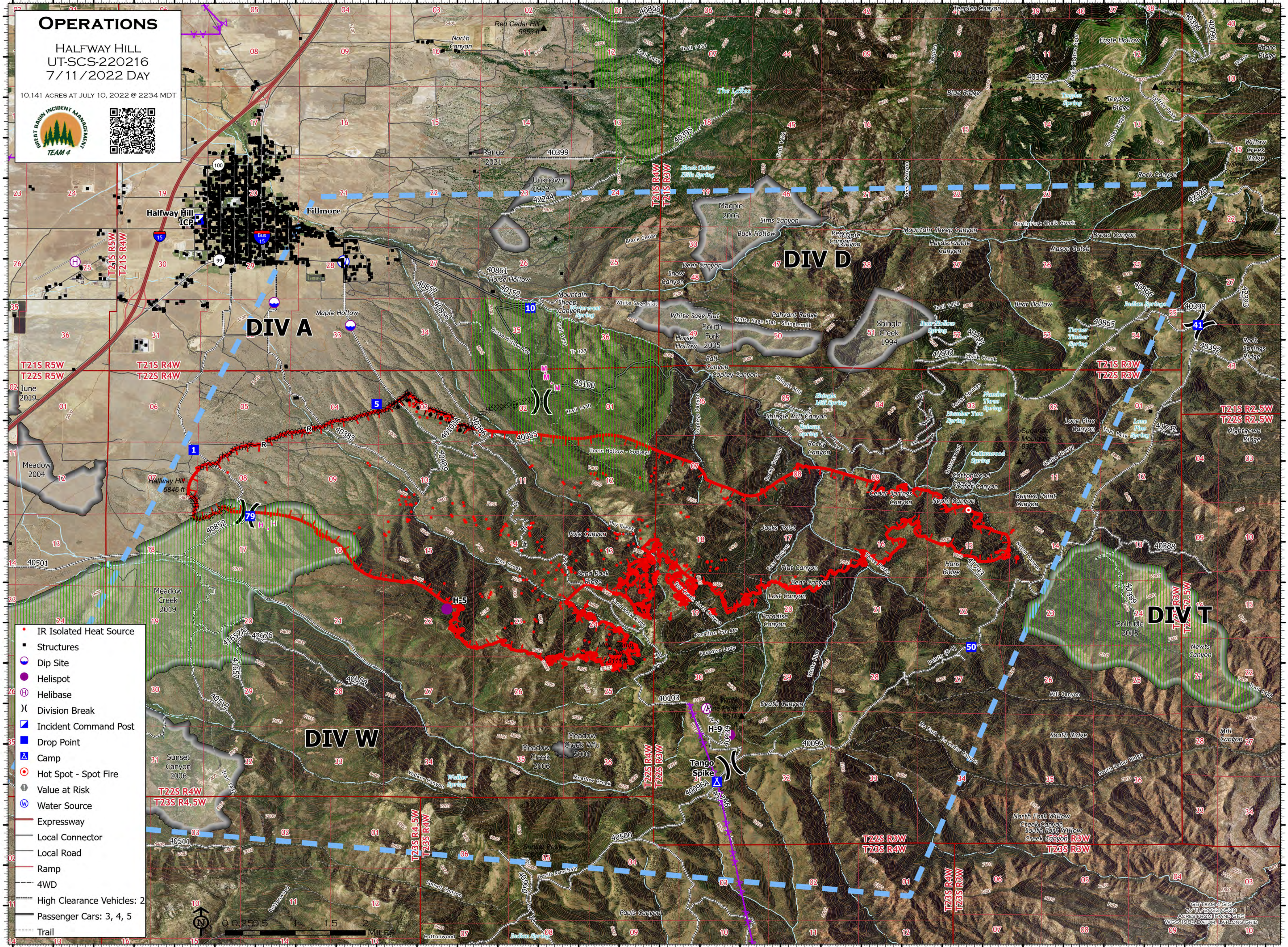
HALFWAY HILL
UT-SCS-220216
7/11/2022 DAY

10,141 ACRES AT JULY 10, 2022 @ 2234 MDT




39°N
38°59'N
38°58'N
38°57'N
38°56'N
38°55'N
38°53.99'N
38°53'N
38°51'N
38°50'N

39°N
38°59'N
38°58'N
38°57'N
38°56'N
38°55'N
38°53.99'N
38°53'N
38°51'N
38°50'N



- IR Isolated Heat Source
- Structures
- Dip Site
- Helispot
- ⊕ Helibase
- ⌋ Division Break
- ▲ Incident Command Post
- Drop Point
- ▲ Camp
- Hot Spot - Spot Fire
- Value at Risk
- Water Source
- Expressway
- Local Connector
- Local Road
- Ramp
- 4WD
- High Clearance Vehicles: 2
- Passenger Cars: 3, 4, 5
- Trail

GE TEAM 4 GIS
7/11/2022 05:29
ACRES FROM IR AND GPS
WGS 1984 DATUM, LANTANA GRID