

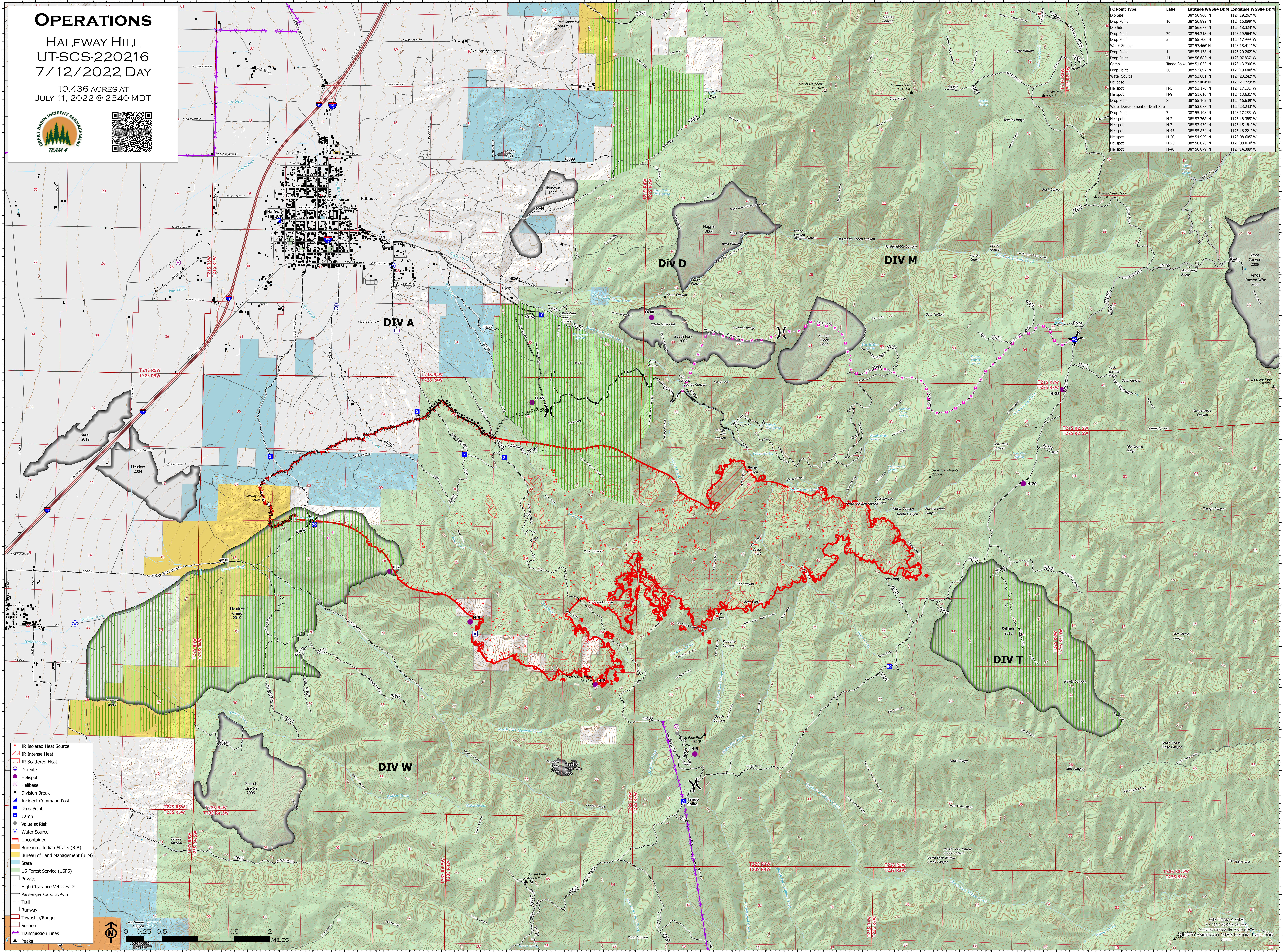
OPERATIONS

HALFWAY HILL
UT-SCS-220216
7/12/2022 DAY

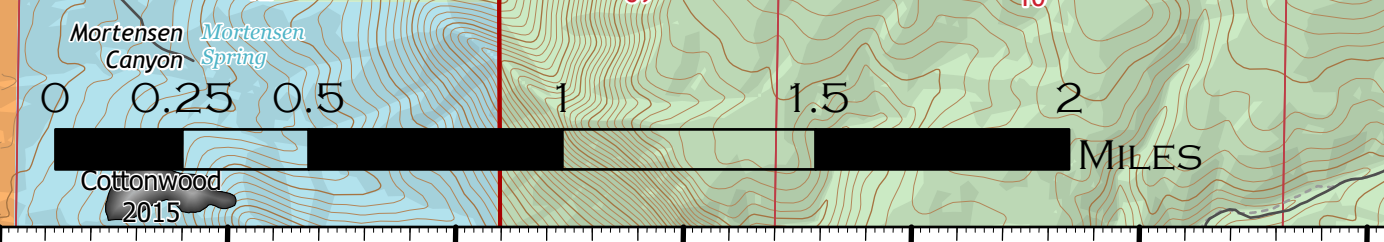
10,436 ACRES AT
JULY 11, 2022 @ 2340 MDT



FC Point Type	Label	Latitude WGS84 DDM	Longitude WGS84 DDM
Dip Site		38° 56.907' N	112° 19.267' W
Drop Point	10	38° 56.892' N	112° 16.099' W
Dip Site		38° 56.677' N	112° 18.234' W
Drop Point	79	38° 54.318' N	112° 17.999' W
Drop Point	5	38° 55.706' N	112° 17.999' W
Water Source		38° 57.466' N	112° 18.411' W
Drop Point	1	38° 55.386' N	112° 20.262' W
Drop Point	41	38° 56.683' N	112° 07.837' W
Camp	Tango Spike	38° 51.033' N	112° 13.790' W
Drop Point	50	38° 52.697' N	112° 10.640' W
Water Source		38° 53.081' N	112° 23.242' W
Helibase		38° 57.464' N	112° 17.279' W
Helispot	H-5	38° 53.130' N	112° 17.131' W
Helispot	H-9	38° 51.610' N	112° 13.631' W
Drop Point	8	38° 55.162' N	112° 16.639' W
Water Development or Draft Site		38° 53.078' N	112° 23.243' W
Drop Point	7	38° 55.198' N	112° 17.253' W
Helispot	H-2	38° 53.768' N	112° 18.385' W
Helispot	H-7	38° 52.830' N	112° 15.181' W
Helispot	H-45	38° 55.834' N	112° 16.221' W
Helispot	H-20	38° 54.929' N	112° 08.605' W
Helispot	H-25	38° 56.073' N	112° 08.010' W
Helispot	H-40	38° 56.879' N	112° 14.389' W



- IR Isolated Heat Source
- IR Intense Heat
- IR Scattered Heat
- Dip Site
- Helispot
- Helibase
- Division Break
- Incident Command Post
- Drop Point
- Camp
- Value at Risk
- Water Source
- Uncontained
- Bureau of Indian Affairs (BIA)
- Bureau of Land Management (BLM)
- State
- US Forest Service (USFS)
- Private
- High Clearance Vehicles: 2
- Passenger Cars: 3, 4, 5
- Trail
- Runway
- Township/Range
- Section
- Transmission Lines
- Peaks



UT-SCS-220216
7/12/2022 04:34
ACRES FROM ANALYSIS
GREAT BASIN INCIDENT MANAGEMENT TEAM 4 GIS