

112°21.01'W

112°20'W

112°19'W

112°18'W

112°17'W

112°16'W

112°15'W

38°57'N

38°56'N

38°55'N

38°53.99'N

38°53.99'N

38°57'N

38°56'N

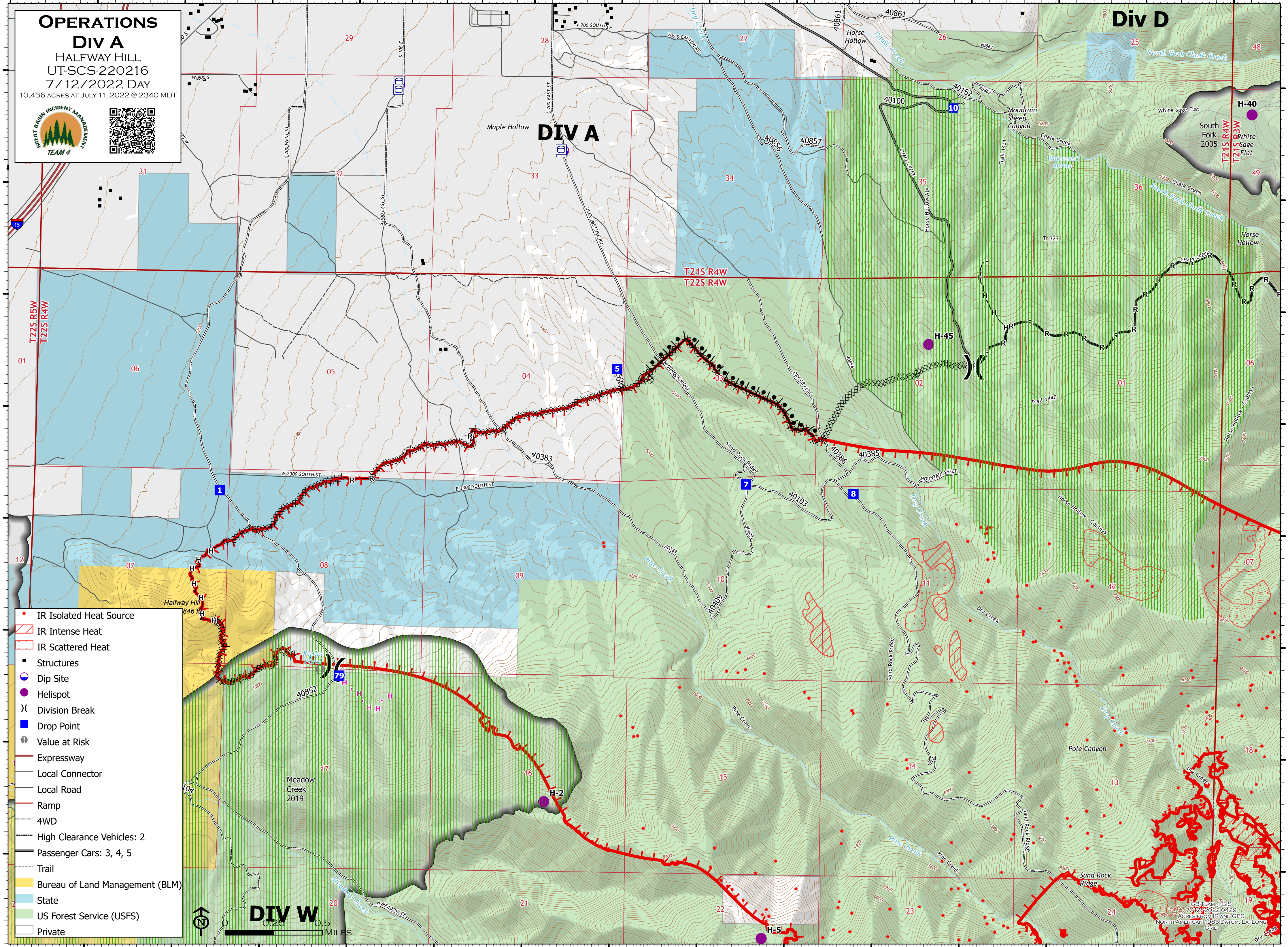
38°55'N

38°53.99'N

38°53.99'N

OPERATIONS
Div A
 HALFWAY HILL
 UT-SCS-220216
 7/12/2022 DAY
 10,436 ACRES AT JULY 11, 2022 @ 2340 MDT





- IR Isolated Heat Source
- ▨ IR Intense Heat
- ▨ IR Scattered Heat
- Structures
- Dip Site
- Helispot
- ⌋ Division Break
- Drop Point
- Value at Risk
- Expressway
- Local Connector
- Local Road
- Ramp
- 4WD
- High Clearance Vehicles: 2
- Passenger Cars: 3, 4, 5
- Trail
- Bureau of Land Management (BLM)
- State
- US Forest Service (USFS)
- Private

Div W




GB TEAM 4 GIS
 7/12/2022 0429
 ACRES FROM IR AND GPS
 NORTH AMERICAN 1983 DATUM, LAT/LONG
 GRID