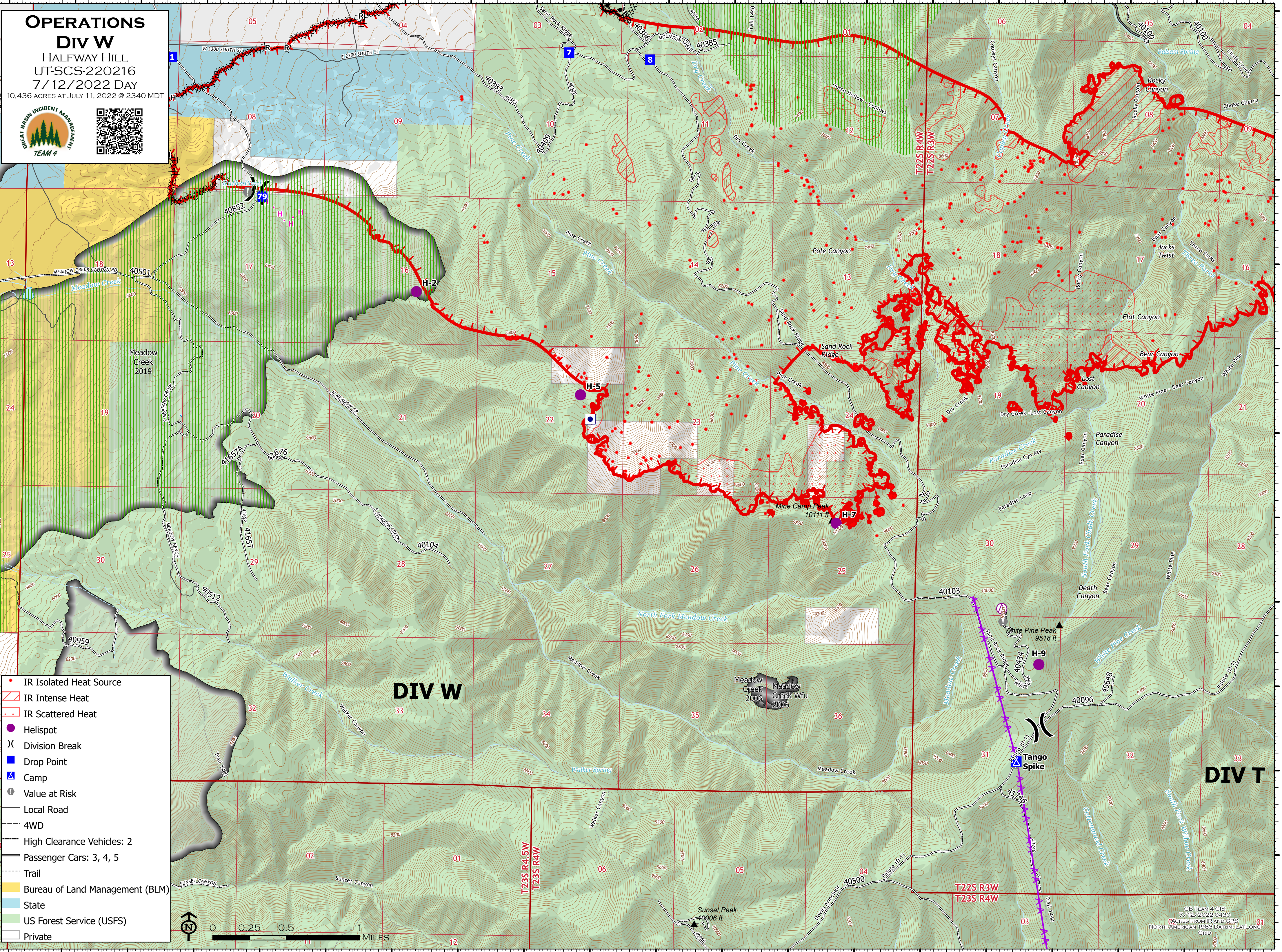
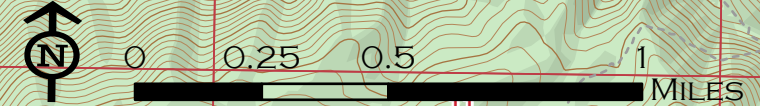


**OPERATIONS**  
**Div W**  
 HALFWAY HILL  
 UT-SCS-220216  
 7/12/2022 DAY  
 10,436 ACRES AT JULY 11, 2022 @ 2340 MDT





- IR Isolated Heat Source
- ▭ IR Intense Heat
- IR Scattered Heat
- Helispot
- ⌘ Division Break
- Drop Point
- ▲ Camp
- ⊕ Value at Risk
- Local Road
- - - 4WD
- - - High Clearance Vehicles: 2
- - - Passenger Cars: 3, 4, 5
- - - Trail
- Bureau of Land Management (BLM)
- State
- US Forest Service (USFS)
- Private



GB TEAM 4 GIS  
 7/12/2022 0430  
 (ACRES FROM IR AND GPS)  
 NORTH AMERICAN 1983 DATUM, LAT/LONG  
 GRID

**DIV W**

**DIV T**

T22S R3W  
 T23S R4W

T23S R4.5W  
 T23S R4W